

# FOR LEASE



## WAREHOUSE | OFFICE SPACE FOR LEASE

10014 E. Montgomery Avenue  
Spokane, WA 99206

### UNIT #1 - OFFICE SPACE

Size:  $\pm$ 1,031 SF

Rent: \$1.00 PSF, Modified Gross (\$1,031 per month)

### UNIT #2 - WAREHOUSE

Size:  $\pm$ 1,239 SF

Rent: \$1.00 PSF, Modified Gross (\$1,238 per month)

*\*Units 1 & 2 are currently combined, but can be leased separately*

### UNIT #3 - WAREHOUSE WITH SMALL OFFICE

Size:  $\pm$ 1,335 SF

Rent: \$1.00 PSF, Modified Gross (\$1,335 per month)

### UNIT #7 - WAREHOUSE WITH SMALL OFFICE

AVAILABLE FEBRUARY 1ST, 2025

Size:  $\pm$ 1,335 SF

Rent: \$1.00 PSF, Modified Gross (\$1,335 per month)

**VIEW  
LOCATION**



**CRAIG SOEHREN, BROKER**

509.755.7548

[craigs@kiemlehagood.com](mailto:craigs@kiemlehagood.com)

**ERIK NELSON, MANAGING BROKER**

509.755.7514

[erik.nelson@kiemlehagood.com](mailto:erik.nelson@kiemlehagood.com)

*\*Owners are Licensed Real Estate Brokers  
in the State of Washington*

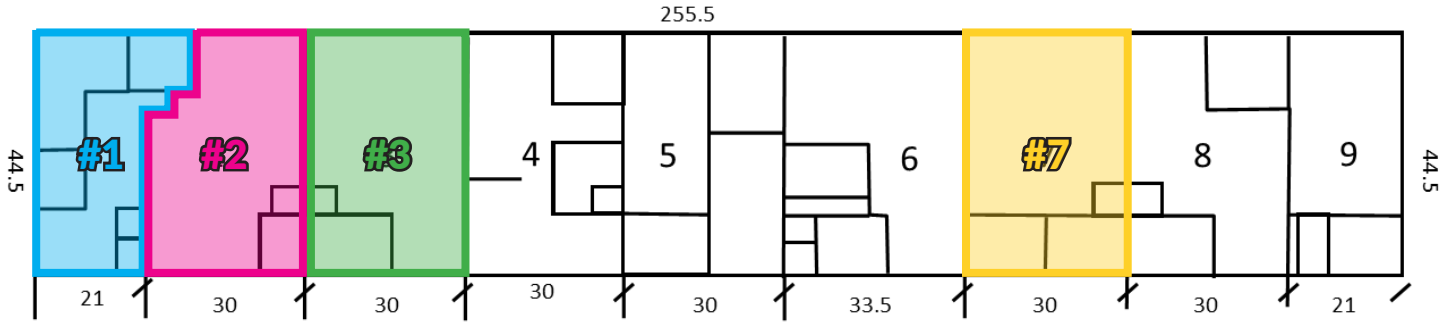
**KIEMLE  
HAGOOD**

# WAREHOUSE | OFFICE SPACE FOR LEASE

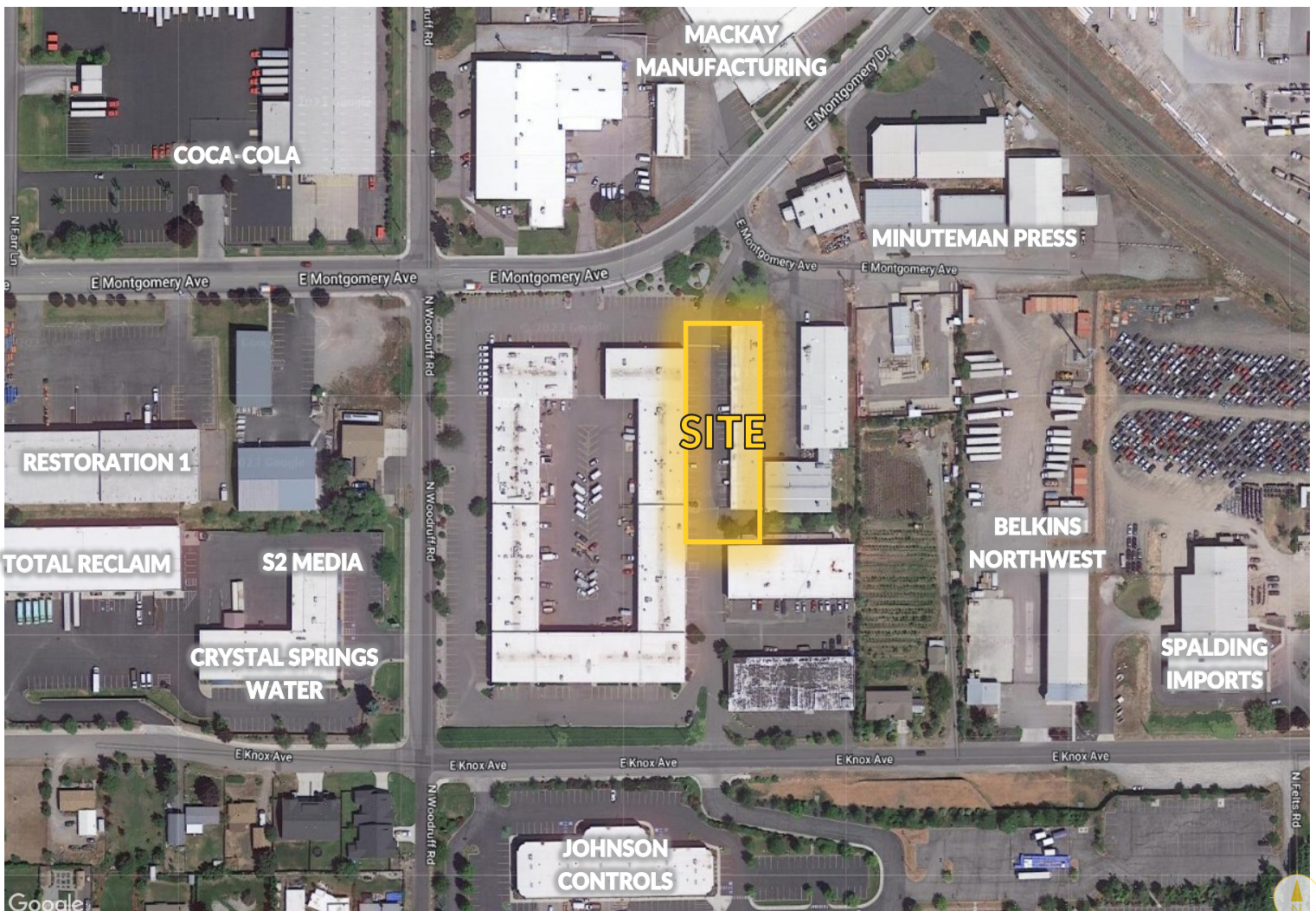
10014 E. Montgomery Avenue  
Spokane, WA 99206

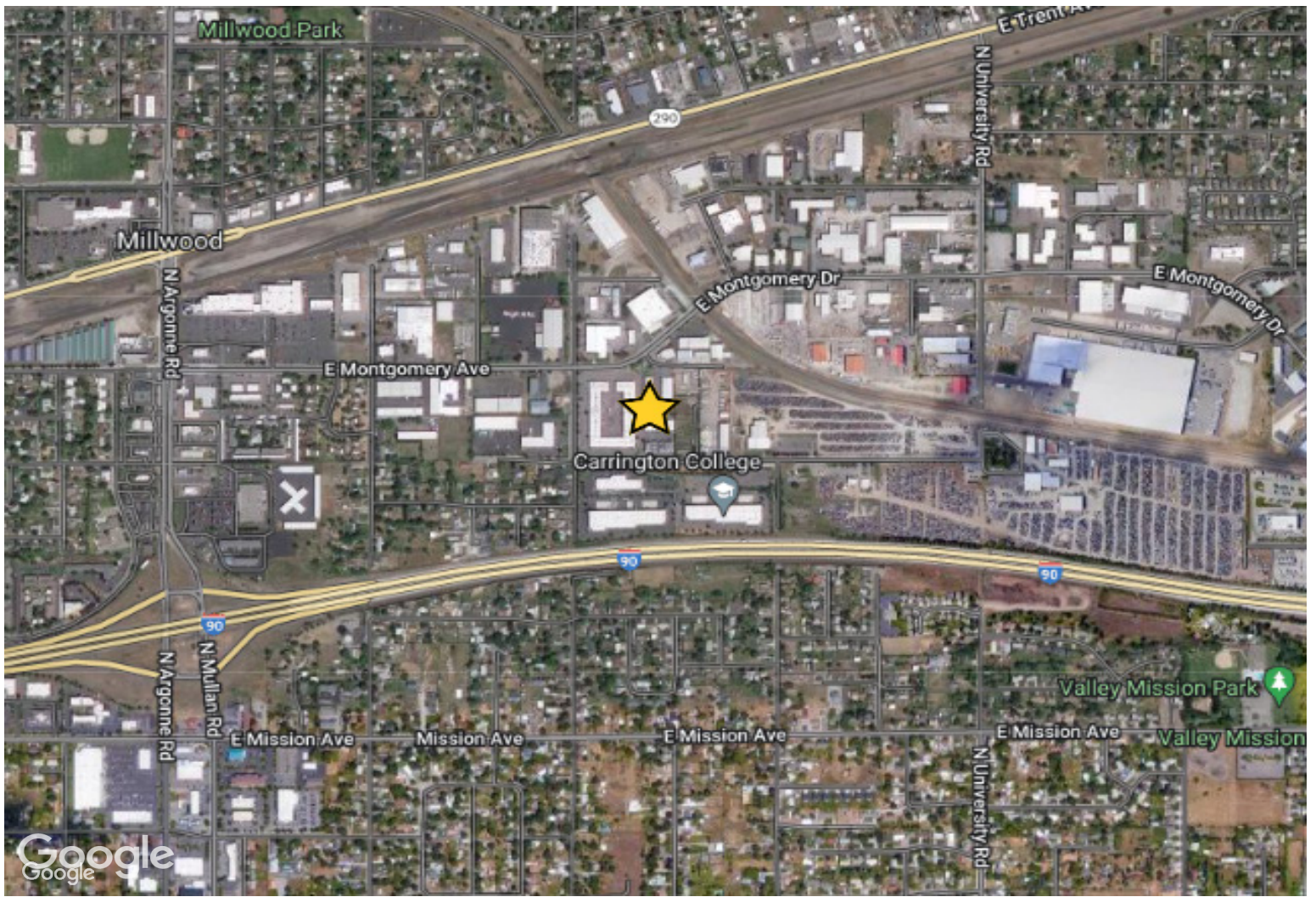
**LEASE RATE: \$1.00 PSF, MODIFIED GROSS**

- UNIT #1** - Office space ±1,031 SF
- UNIT #2** - Warehouse space ±1,239 SF
- UNIT #3** - Warehouse with small office ±1,335 SF
- UNIT #7** - Warehouse with small office ±1,335 SF



\*Units 1 & 2 are currently combined, but can be leased separately





## WAREHOUSE / OFFICE SPACE FOR LEASE

10014 E. Montgomery Avenue  
Spokane, WA 99206

**CRAIG SOEHREN, BROKER**

509.755.7548 craigs@kiemlehgahood.com

**ERIK NELSON, MANAGING BROKER**

509.755.7514 erik.nelson@kiemlehgahood.com

**KIEMLE  
HAGOOD**

**OFFICE LOCATIONS**

SPOKANE | COEUR D'ALENE | TRI-CITIES | PALOUSE | MISSOULA



601 WEST MAIN AVENUE, SUITE 400  
SPOKANE, WA 99201

No warranty or representation, expressed or implied, is made by Kiemle Hagood, its agents or its employees as to the accuracy of the information contained herein. All information furnished is from sources deemed reliable and submitted subject to errors, omissions, change of terms and conditions, prior sale, lease or financing, or withdrawal without notice. No one should rely solely on the above information, but instead should conduct their own investigation to independently satisfy themselves.

Kiemle Hagood respects the intellectual property of others:

If you believe the copyright in your work has been violated through this Website, please contact our office for notice of claims of copyright infringement. For your complaint to be valid under the Digital Millennium Copyright Act of 1998 (DMCA), you must provide the following information when providing notice of the claimed copyright infringement: Identify the material on the Website that you believe infringes your work, with enough detail so that we may locate it on the Website; provide your address, telephone number and email address; provide a statement that you have a good faith belief that the disputed use is not authorized by the copyright owner, its agent, or the law; provide a statement that the information in the notification is accurate, and under penalty of perjury, that the complaining party is authorized to act on behalf of the owner of an exclusive right that is allegedly infringed; and provide your physical or electronic signature. Upon receiving your complaint, Kiemle Hagood will, upon review, remove content that you believe infringes your copyright if the complaint is found to be valid.