

400 MEADOWMONT VILLAGE CIR.

MEDICAL & OFFICE SPACES FOR LEASE | SUITES 421 & 429 | CHAPEL HILL, NC 27517



WILL SMITH
willsmith@lee-associates.com
O 919.591.2266
M 919.986.9371



LEE &
ASSOCIATES

COMMERCIAL REAL ESTATE SERVICES
RALEIGH • DURHAM • WILMINGTON

PROPERTY OVERVIEW

SUITE 421

±3,806 RSF

Call Broker for Pricing

SUITE 429

±1,630 RSF

Call Broker for Pricing

PROPERTY DESCRIPTION

The ±39,041 SF multi-tenant building is located in the heart of Meadowmont Village, one of Chapel Hill's premier mixed-use communities. The property features surface parking, a professional brick exterior, and walkable access to amenities including Harris Teeter, Brixx Wood Fired Pizza, Five Guys, Café Carolina, Bluebird, and numerous additional retail and dining options nearby. The property offers an ideal setting for medical, wellness, and professional office users seeking a highly amenitized environment.

IMPORTANT FACTS

- » SUITES AVAILABLE
 - » Suite 429 | ±1,630 RSF | Call Broker for Pricing
 - » Suite 421 | ±3,806 RSF | Call Broker for Pricing
- » Located within Meadowmont Village, one of Chapel Hill's premier mixed-use communities
- » Walkable access to Harris Teeter, Brixx Wood Fired Pizza, Five Guys, Café Carolina, Bluebird, and other retail and dining amenities
- » Ideal for medical, wellness, and professional office users
- » Surface parking available for tenants and visitors
- » Ownership preparing medical-oriented spec fit plans and as-built floor plans
- » Professional brick exterior with an institutional-quality presence
- » Affluent surrounding demographics and strong daytime population
- » Convenient access to UNC, UNC Health, and surrounding Chapel Hill residential communities
- » Flexible suite configurations for a variety of office and medical users



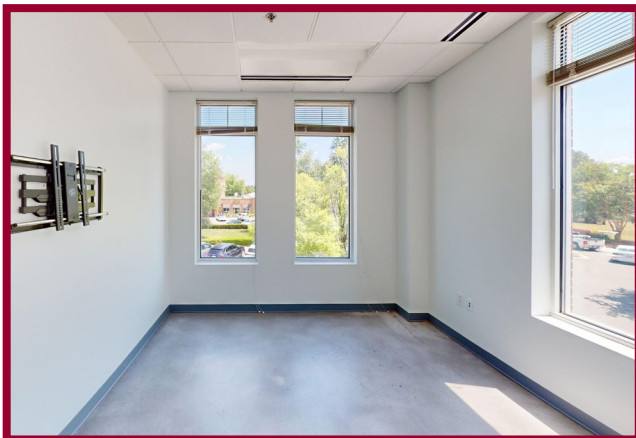
FLOORPLAN

SUITE 421
±3,806 RSF
Call Broker for Pricing

Click the Image below or Scan the QR Code for a Virtual Walk-Through



Visit 3D space on
 Matterport®

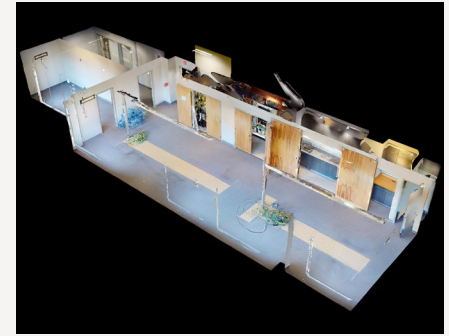


MEDICAL SPACE COMING Q1 2027

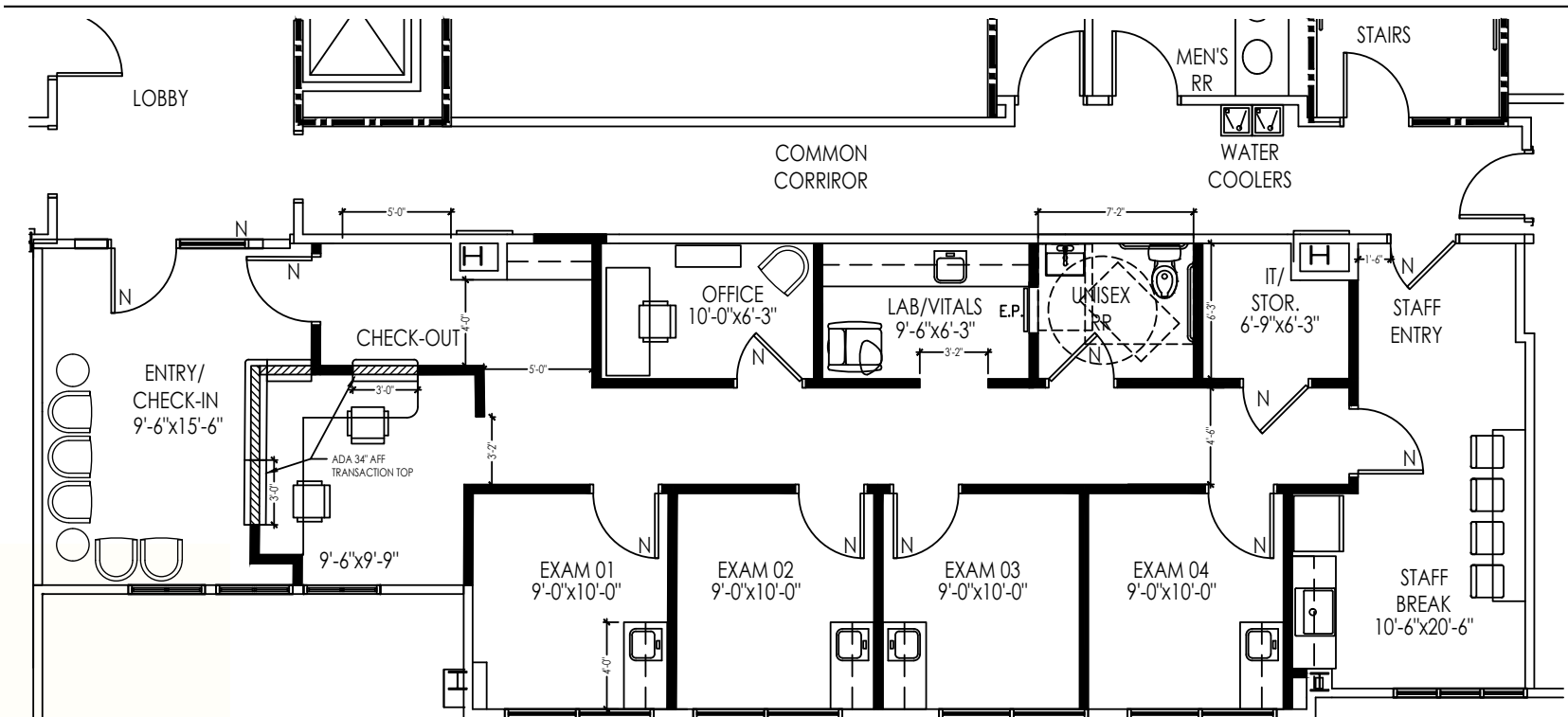
SUITE 429 | ±1,630 RSF | Call Broker for Pricing



Click the Image below or Scan the QR Code for a Virtual Walk-Through



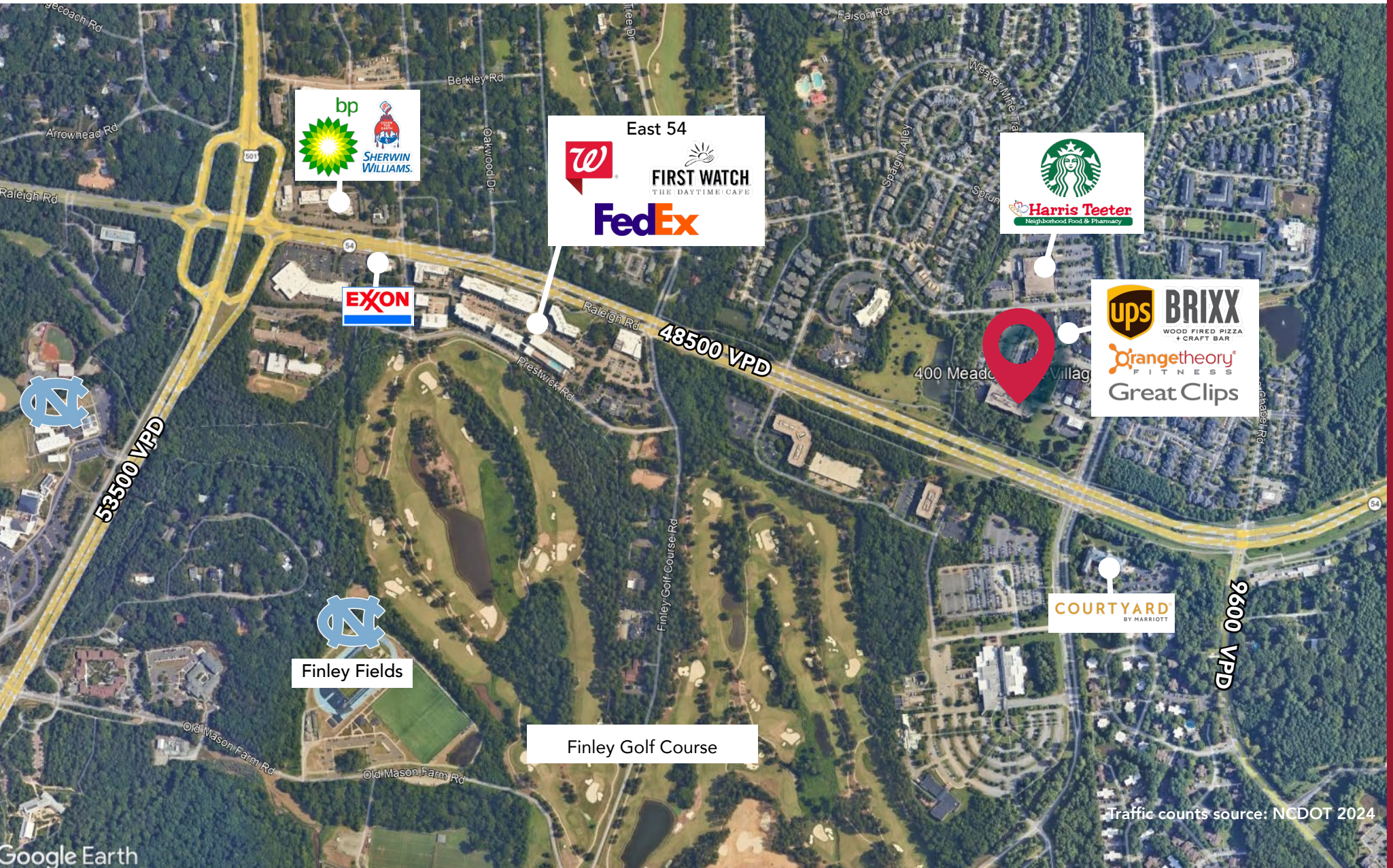
Visit 3D space on
 Matterport



LOCATION

Located within the highly desirable Meadowmont mixed-use community in Chapel Hill, 400 Meadowmont Village Circle offers a premier medical office location surrounded by upscale residential neighborhoods, walkable retail amenities, restaurants, hotels, and everyday conveniences. The property provides immediate access to NC 54, US 15-501, and I-40, allowing for efficient connectivity throughout Chapel Hill, Durham, RTP, and the greater Triangle region.

Positioned just minutes from UNC Health, the University of North Carolina at Chapel Hill, and numerous medical and professional office users, the location is ideally suited for medical, wellness, and traditional office tenants seeking a highly amenitized and centrally located environment.

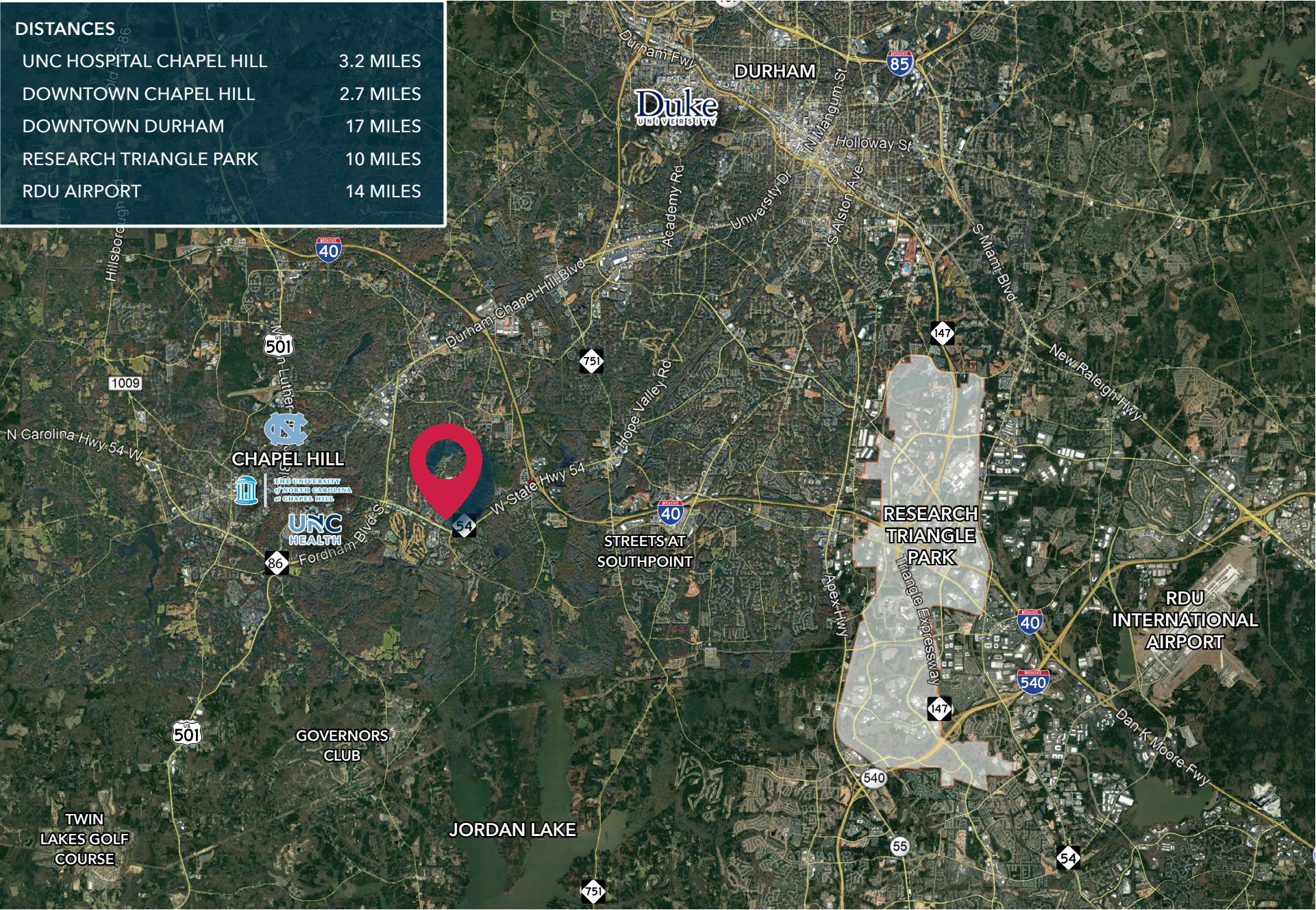


400 MEADOWMONT VILLAGE CIR, SUITES 421 & 429 | CHAPEL HILL, NC 27517

AREA OVERVIEW

DISTANCES

UNC HOSPITAL CHAPEL HILL	3.2 MILES
DOWNTOWN CHAPEL HILL	2.7 MILES
DOWNTOWN DURHAM	17 MILES
RESEARCH TRIANGLE PARK	10 MILES
RDU AIRPORT	14 MILES



DEMOGRAPHICS



	1 MILE	3 MILES	5 MILES
Population (2025)	6,859	49,898	143,028
Daytime Population	9,445	54,314	188,265
Median Age	32.7	37.0	32.7
Median Household Income	\$78,372	\$100,984	\$95,363
Median Home Value	\$500,000	\$593,383	\$530,319



WILL SMITH
willsmith@lee-associates.com
O 919.591.2266
M 919.986.9371

 LEE &
ASSOCIATES
COMMERCIAL REAL ESTATE SERVICES
RALEIGH • DURHAM • WILMINGTON

Owned and Managed by Affiliates of
 WOODSIDE
HEALTH

100 Walnut Street | Cary, NC 27511 | 919.576.2500 | lee-associates.com/raleigh

All information furnished regarding property for sale, rental or financing is from sources deemed reliable, but no warranty or representation is made to the accuracy thereof and same is submitted to errors, omissions, change of price, rental or other conditions prior to sale, lease or financing or withdrawal without notice. No liability of any kind is to be imposed on the broker herein.