

# 9390 W GOLDEN TROUT ST

FOR SALE OR LEASE

BOISE, ID 83704



**TOK** COMMERCIAL  
REAL ESTATE

**34,400 SF**

BLDG SIZE

**3.26 AC**

LOT SIZE

SALE PRICE

**\$6,536,000**

**MIKE GREENE** SIOR, CCIM

208.947.0835 / mikeg@tokcommercial.com

**NICK SCHUITEMAKER**, CCIM

208.947.0802 / nick@tokcommercial.com

**PETER OLIVER** SIOR, CCIM

208.947.0816 / peter@tokcommercial.com

## FOR LEASE

AVAILABLE	AVAILABLE SIZE	LEASE RATE
9390 W GOLDEN ST	34,400 SF	\$16.00/SF, NNN

**NNN**  
LEASE TYPE

## FOR SALE

AVAILABLE	BLDG SIZE	PRICE/SF	SALE PRICE
9390 W GOLDEN ST	34,400 SF	\$190/SF	\$6,536,000

# PROPERTY SUMMARY

Address	9390 W Golden Trout St Boise, ID 83704
Submarket	West
Zoning	I-1
Property Type	Office
Building Size	34,400 SF
Lot Size	3.26 AC
Parking Ratio	6:1,000
Power	1,500 AMP, 480V, 3 Phase



[ 2 ] **9390 W GOLDEN TROUT ST**

UPDATED: 5.6.2026

THIS PROPERTY IS EXCLUSIVELY MARKETED BY TOK BOISE LLC DBA TOK COMMERCIAL. THIS INFORMATION WAS OBTAINED FROM SOURCES BELIEVED RELIABLE BUT CANNOT BE GUARANTEED. ANY OPINIONS OR ESTIMATES ARE USED FOR EXAMPLE ONLY.

**TOK**COMMERCIAL.COM

# THE HIGHLIGHTS



Ample On-Site Parking – The property offers a generous parking ratio, ensuring convenient and accessible parking for both employees and visitors at all times.



Back-Up Power for Reliability – Equipped with a 500 kW generator and UPS system, the building ensures continuous power during outages, supporting business continuity and minimizing operational disruptions.



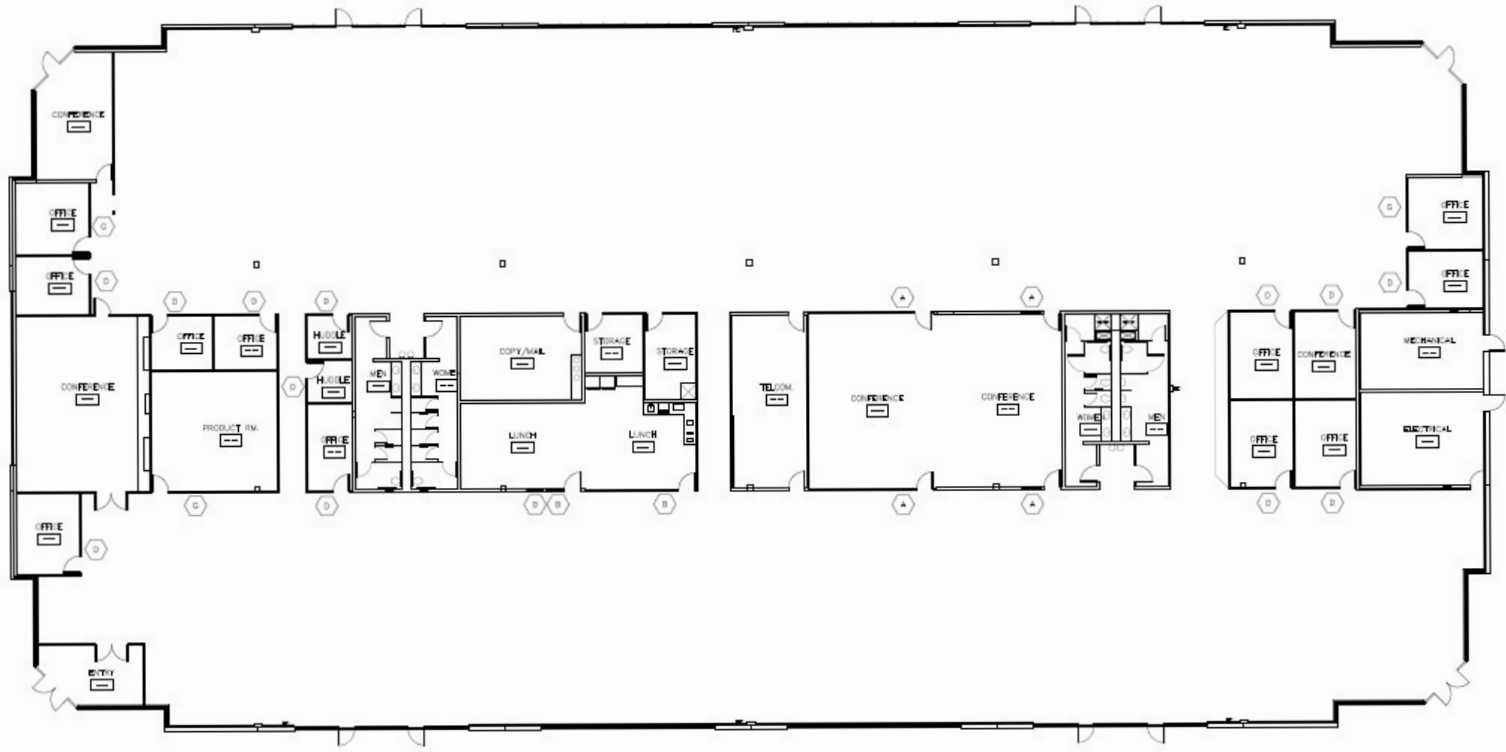
Efficient Open Office Layout – Features a functional and flexible open office design that maximizes usable space, encourages collaboration, and can be easily adapted to a variety of business needs.



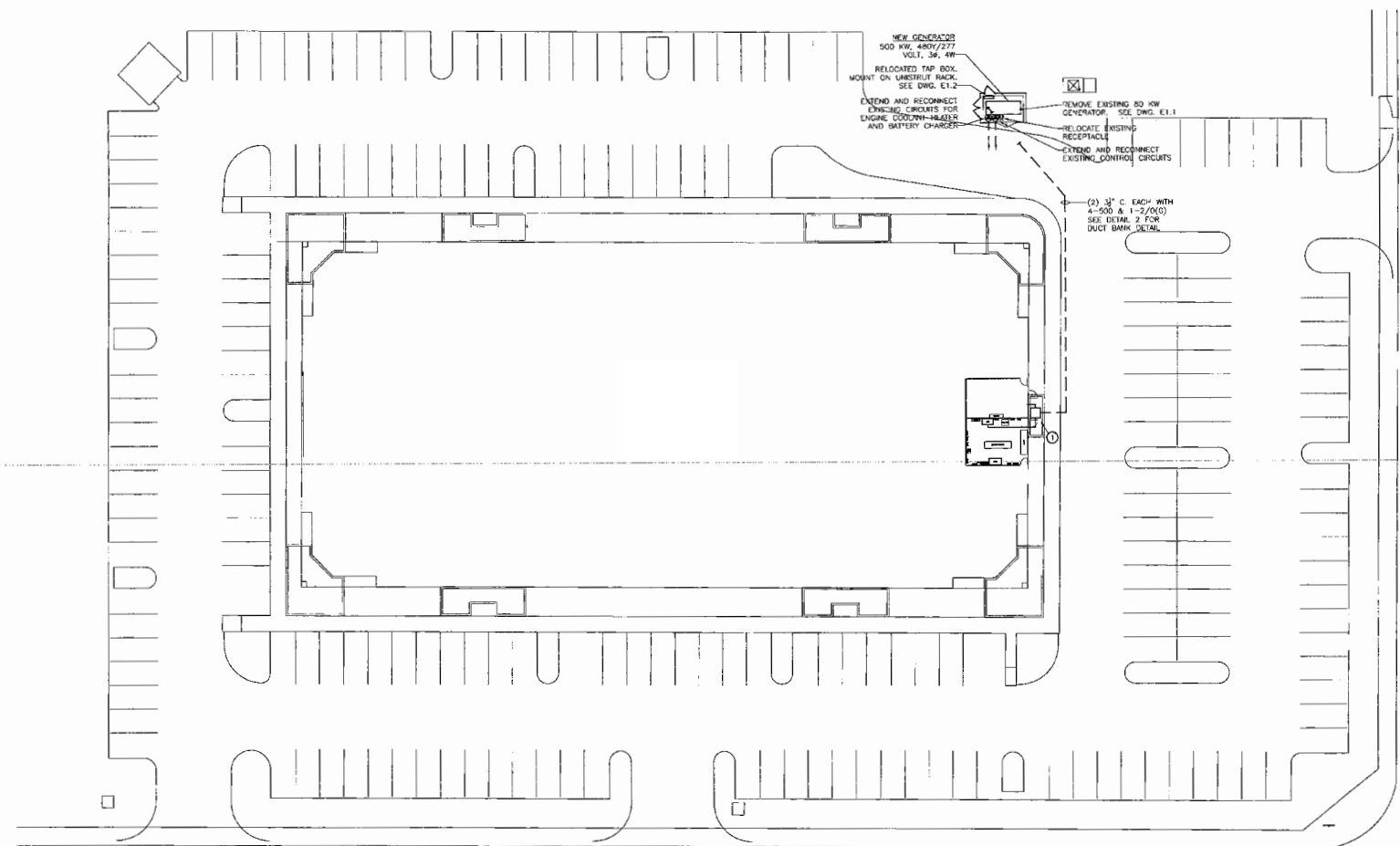
Abundant Power Capacity – The building is outfitted with substantial electrical infrastructure, making it well-suited for power-intensive operations, specialized equipment, or future scalability.



# FLOOR PLAN



# SITE PLAN



# ZONING INFORMATION

## L-1 (INDUSTRIAL: LIGHT)

I-1 (Industrial: Light) zoning in Boise, Idaho is the city's designation for lower-impact industrial uses that can coexist near commercial and residential areas with proper design standards. It is intended to accommodate light manufacturing, assembly, fabrication, and technology-related land uses that may require significant transportation services but that typically do not operate during nighttime hours, and are generally compatible with nearby commercial and residential areas when accompanied by substantial buffering, screening, and standards designed to mitigate impacts.

In terms of dimensional standards, there are no minimum lot area, lot width, or street frontage requirements. Setbacks include a 20-foot front yard minimum, a 15-foot street side minimum, and zero-foot interior side and rear yard minimums. Building height is capped at 55 feet.

For streetscape design, each frontage on a local street must include a detached sidewalk at least five feet wide, separated from the curb by eight to ten feet to accommodate a landscape buffer and street trees. Frontages on collector or arterial streets require a wider detached sidewalk of at least ten feet with the same curb separation.

On the environmental and operational side, no uses that generate, use, treat, store, or dispose of hazardous substances are permitted, and all operations creating odor, dust, smoke, fumes, noise, vibrations, or other emissions must be reasonably mitigated to protect the health, safety, and general welfare of surrounding land uses. City of Boise

Overall, I-1 is designed to strike a balance — allowing productive industrial and manufacturing activity while keeping impacts manageable enough to sit alongside commercial corridors and neighborhoods. For the most precise and current standards, it's always best to consult Boise's official zoning code

**Light  
manufacturing &  
assembly allowed**

**Daytime  
operations, low  
nuisance**

**Flexible zero  
interior setbacks**

**LEARN MORE**





[ 7 ] 9390 W GOLDEN TROUT ST

UPDATED: 5.6.2026

THIS PROPERTY IS EXCLUSIVELY MARKETED BY TOK BOISE LLC DBA TOK COMMERCIAL. THIS INFORMATION WAS OBTAINED FROM SOURCES BELIEVED RELIABLE BUT CANNOT BE GUARANTEED. ANY OPINIONS OR ESTIMATES ARE USED FOR EXAMPLE ONLY.



11,431 VPD

SITE

W EMERALD ST

W GOLDEN TROUT ST

[ 9 ] 9390 W GOLDEN TROUT ST

UPDATED: 5.6.2026

THIS PROPERTY IS EXCLUSIVELY MARKETED BY TOK BOISE LLC DBA TOK COMMERCIAL. THIS INFORMATION WAS OBTAINED FROM SOURCES BELIEVED RELIABLE BUT CANNOT BE GUARANTEED. ANY OPINIONS OR ESTIMATES ARE USED FOR EXAMPLE ONLY.



MERIDIAN  
5 MILES AWAY

11,431 VPD

SITE

W EMERALD ST

N KIMBALL PL

[ 10 ] 9390 W GOLDEN TROUT ST

UPDATED: 5.6.2026

THIS PROPERTY IS EXCLUSIVELY MARKETED BY TOK BOISE LLC DBA TOK COMMERCIAL. THIS INFORMATION WAS OBTAINED FROM SOURCES BELIEVED RELIABLE BUT CANNOT BE GUARANTEED. ANY OPINIONS OR ESTIMATES ARE USED FOR EXAMPLE ONLY.

1 MILE RADIUS



POPULATION  
**9,073**  
1 MI. RADIUS



HOUSEHOLDS  
**3,641**  
1 MI. RADIUS



AVG. HOUSEHOLD INC.  
**\$88,269**  
1 MI. RADIUS

3 MILE RADIUS



POPULATION  
**99,052**  
3 MI. RADIUS



HOUSEHOLDS  
**40,711**  
3 MI. RADIUS



AVG. HOUSEHOLD INC.  
**\$103,999**  
3 MI. RADIUS

5 MILE RADIUS



POPULATION  
**269,955**  
5 MI. RADIUS

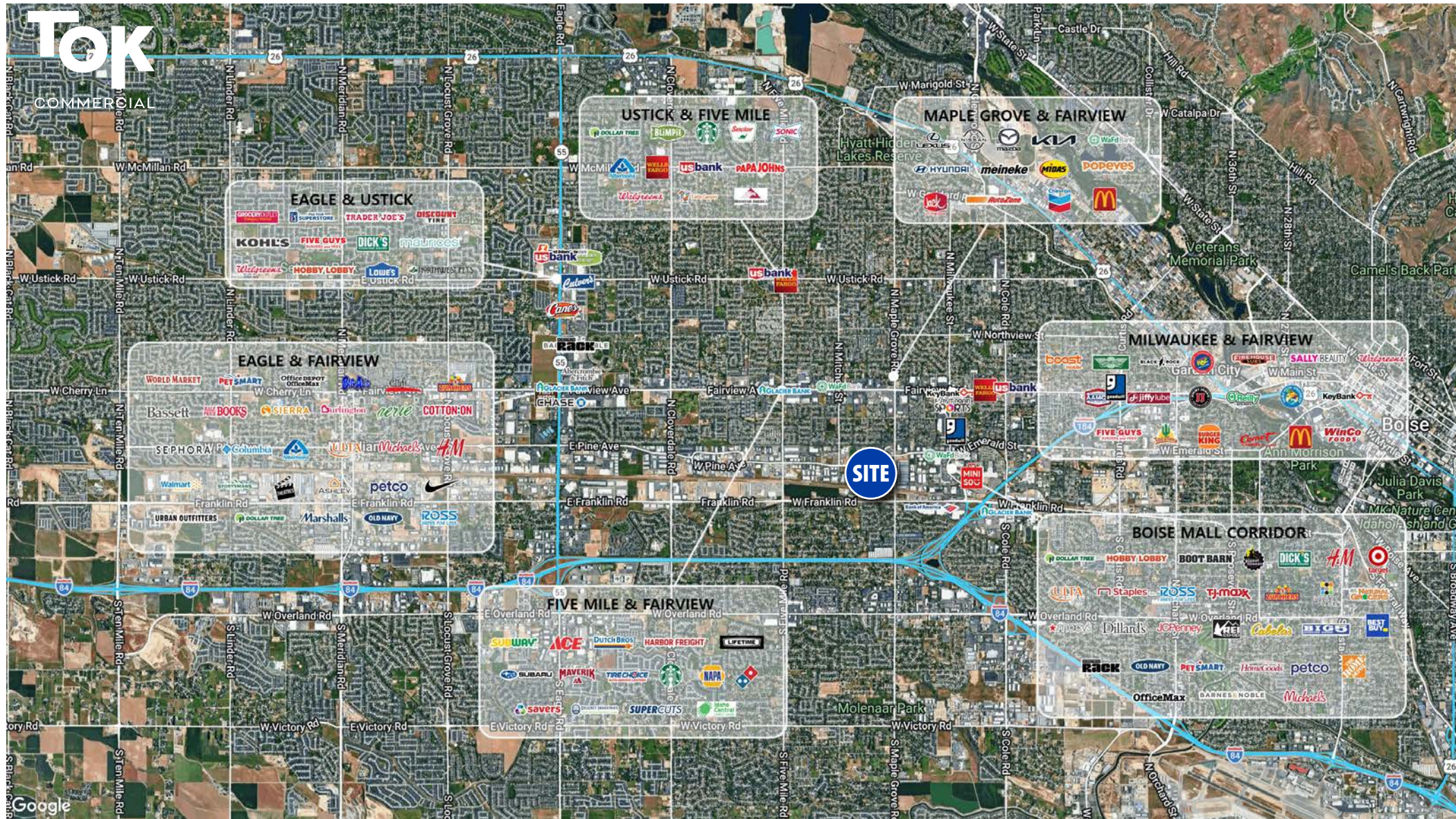


HOUSEHOLDS  
**112,875**  
5 MI. RADIUS



AVG. HOUSEHOLD INC.  
**\$115,875**  
5 MI. RADIUS

**TOK**  
COMMERCIAL



# BOISE, IDAHO

## AREA OVERVIEW

The Boise Valley is home to Idaho's capitol and serves as the center of commerce, politics, population, cultural events, and the blue field that personifies the Boise State Broncos. As a high desert community resting at the foot of the mountains, it is surrounded by thriving bedroom communities rich in their own histories and economies, bringing the metro area population to approximately 845,864. Experts estimate the MSA population will exceed 1,075,000 by 2050.

Although Idaho is world famous for its agriculture, it has an equally vibrant economic environment for high-tech, healthcare, education, transportation, service, tourism, and retail industries. Many nationally and globally recognized corporations have a home in the valley, including Micron Technology, Hewlett Packard, Amazon, Albertsons, J.R. Simplot Company, MotivePower, Materne, LambWeston, and many others.

Forbes consistently ranks the Boise Valley as one of the top places in the country to not only do business, but also for raising a family, entertainment, recreation and its high quality of life.



# #3

BEST PERFORMING CITY  
\*Milken Institute



## 845,864

POPULATION



## \$128,006

AVERAGE HOUSEHOLD  
INCOME



## 3.6%

UNEMPLOYMENT  
RATE

# 9390 W GOLDEN TROUT ST

FOR SALE OR LEASE

BOISE, ID 83704

**MIKE GREENE** SIOR, CCIM

208.947.0835 / [mikeg@tokcommercial.com](mailto:mikeg@tokcommercial.com)

**NICK SCHUITEMAKER**, CCIM

208.947.0802 / [nick@tokcommercial.com](mailto:nick@tokcommercial.com)

**PETER OLIVER** SIOR, CCIM

208.947.0816 / [peter@tokcommercial.com](mailto:peter@tokcommercial.com)

**TOK** COMMERCIAL  
REAL ESTATE

