

# PARKWAY PLAZA • 23945 Calabasas Road

Calabasas, CA 91302



**JAY RUBIN** | [jrubin@lee-re.com](mailto:jrubin@lee-re.com)  
Principal | [JayRubin-RE.com](http://JayRubin-RE.com)  
818.223.4385 | License ID# 01320005

**EUGENE KIM** | [ekim@lee-re.com](mailto:ekim@lee-re.com)  
Principal | License ID# 01521416  
818.444.4919

**LEE & ASSOCIATES**  
COMMERCIAL REAL ESTATE SERVICES  
Corporate ID #01191898



# Parkway Plaza Office Space For Lease | 23945 Calabasas Road | Calabasas



## PROPERTY DETAILS

**ADDRESS:** 23945 Calabasas Road Calabasas, CA 91302

SUITE	RSF	RATE	DESCRIPTION
112	1,653	\$2.55 MG	Tenant is responsible for utilities & janitorial to Premises
200*	2,958	\$2.75 MG	Utilities included. Tenant is responsible for janitorial to Premises.
204	1,334	\$2.90 MG	Tenant is responsible for utilities and janitorial to Premises.
208	2,508	\$2.75 MG	Tenant is responsible for utilities & janitorial to Premises



**PARKING:** 2.75/1,000 RSF - Free of Charge, Covered Parking Available

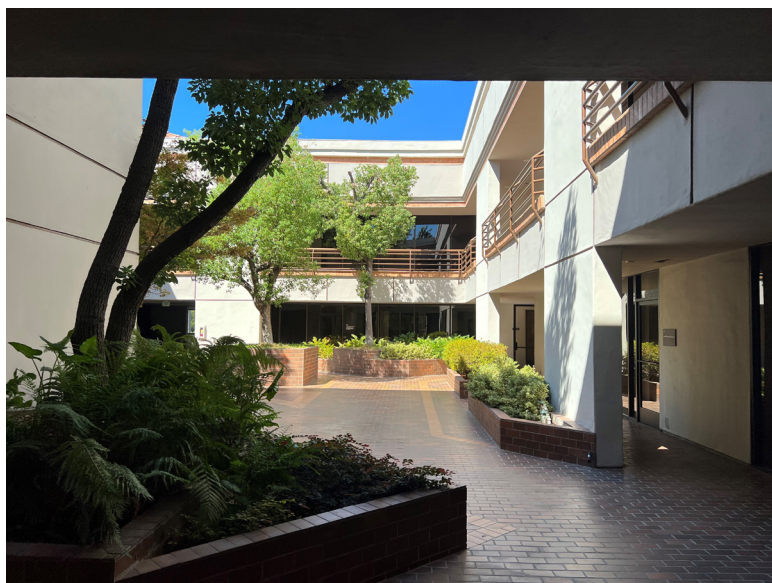
## PROPERTY HIGHLIGHTS

- PRIME CALABASAS LOCATION
- WALKING DISTANCE TO CALABASAS COMMONS
- LOW LOAD FACTOR
- COVERED PARKING
- EASY ACCESS TO US 101 FREEWAY
- ELEVATOR SERVICE
- ON-SITE PROPERTY MANAGEMENT





# Parkway Plaza Office Space For Lease | 23945 Calabasas Road | Calabasas



**JAY RUBIN** | [jrubin@lee-re.com](mailto:jrubin@lee-re.com)  
Principal | [JayRubin-RE.com](http://JayRubin-RE.com)  
818.223.4385 | License ID# 01320005

**EUGENE KIM** | [ekim@lee-re.com](mailto:ekim@lee-re.com)  
Principal | License ID# 01521416  
818.444.4919

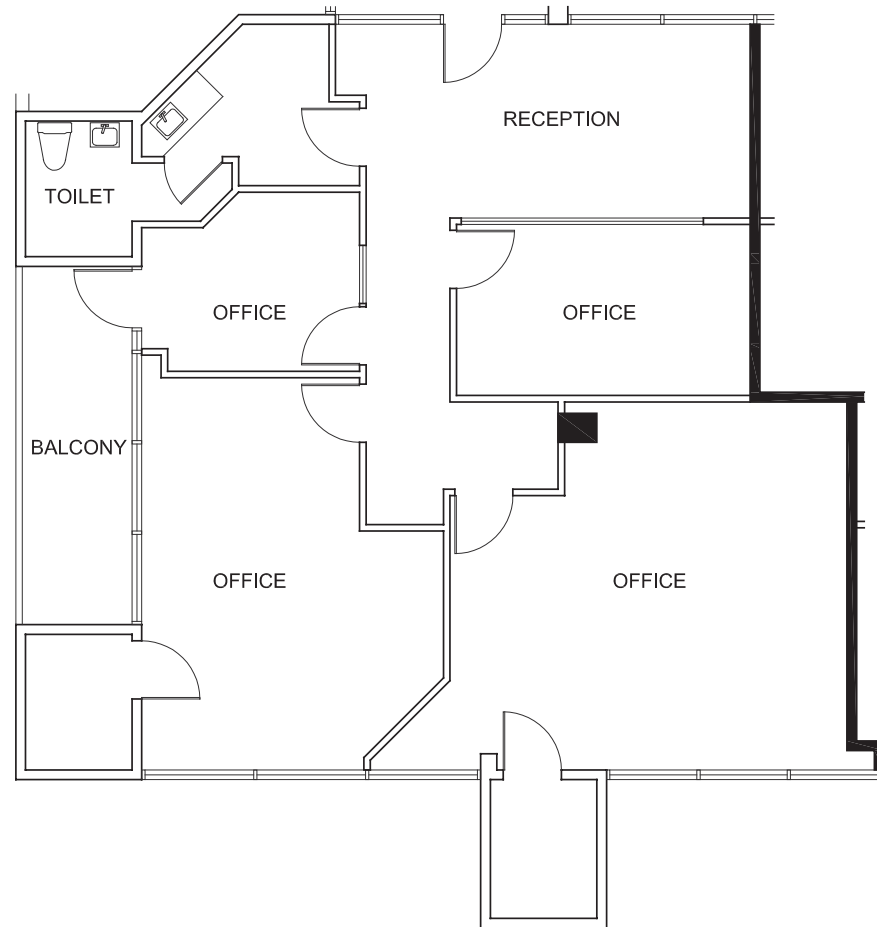


Lee & Associates® - LA North/Ventura, Inc. • Corporate ID #01191898  
A Member of the Lee & Associates® Group of Companies  
5707 Corsa Ave, Suite 200, Westlake Village, CA 91362  
P:818.223.4388 F:818.591.1450

No warranty or representation is made to the accuracy of the foregoing information. Terms of sale or lease and availability are subject to change or withdrawal without notice.

# Parkway Plaza Office Space For Lease | 23945 Calabasas Road | Calabasas

## Floorplan: Suite 112 - 1,653 RSF



\*Not to scale

**JAY RUBIN** | [jrubin@lee-re.com](mailto:jrubin@lee-re.com)  
Principal | [JayRubin-RE.com](http://JayRubin-RE.com)  
818.223.4385 | License ID# 01320005

**EUGENE KIM** | [ekim@lee-re.com](mailto:ekim@lee-re.com)  
Principal | License ID# 01521416  
818.444.4919



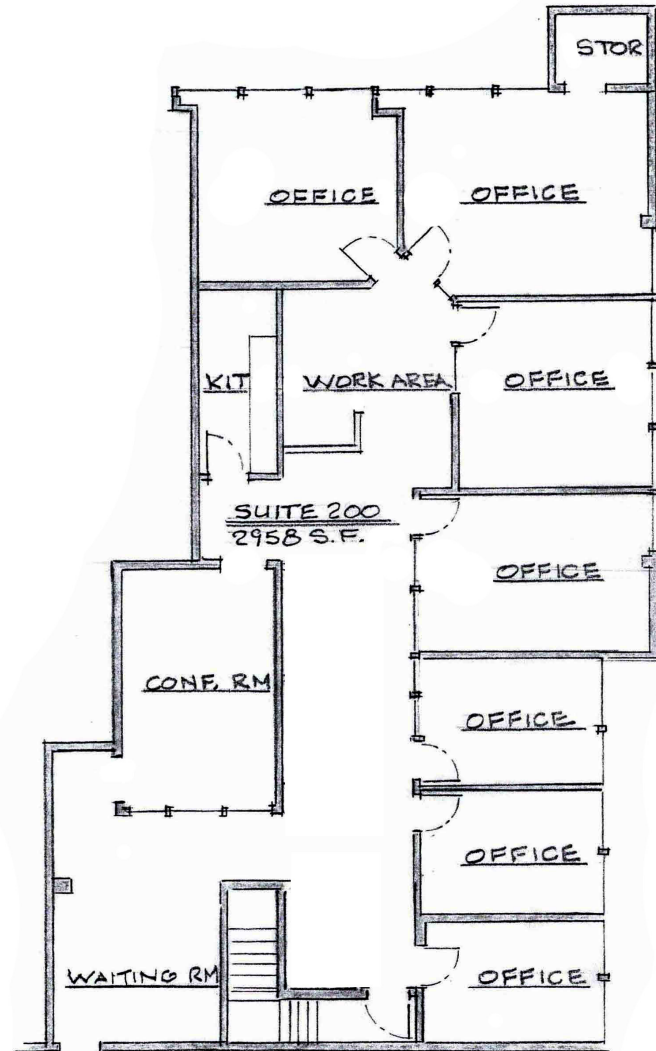
Lee & Associates® - LA North/Ventura, Inc. • Corporate ID #01191898  
A Member of the Lee & Associates® Group of Companies  
5707 Corsa Ave, Suite 200, Westlake Village, CA 91362  
P:818.223.4388 F:818.591.1450

No warranty or representation is made to the accuracy of the foregoing information. Terms of sale or lease and availability are subject to change or withdrawal without notice.



# Parkway Plaza Office Space For Lease | 23945 Calabasas Road | Calabasas

## Floorplan: Suite 200 - 2,958 RSF



\*Not to scale

**JAY RUBIN** | [jrubin@lee-re.com](mailto:jrubin@lee-re.com)  
Principal | [JayRubin-RE.com](http://JayRubin-RE.com)  
818.223.4385 | License ID# 01320005

**EUGENE KIM** | [ekim@lee-re.com](mailto:ekim@lee-re.com)  
Principal | License ID# 01521416  
818.444.4919

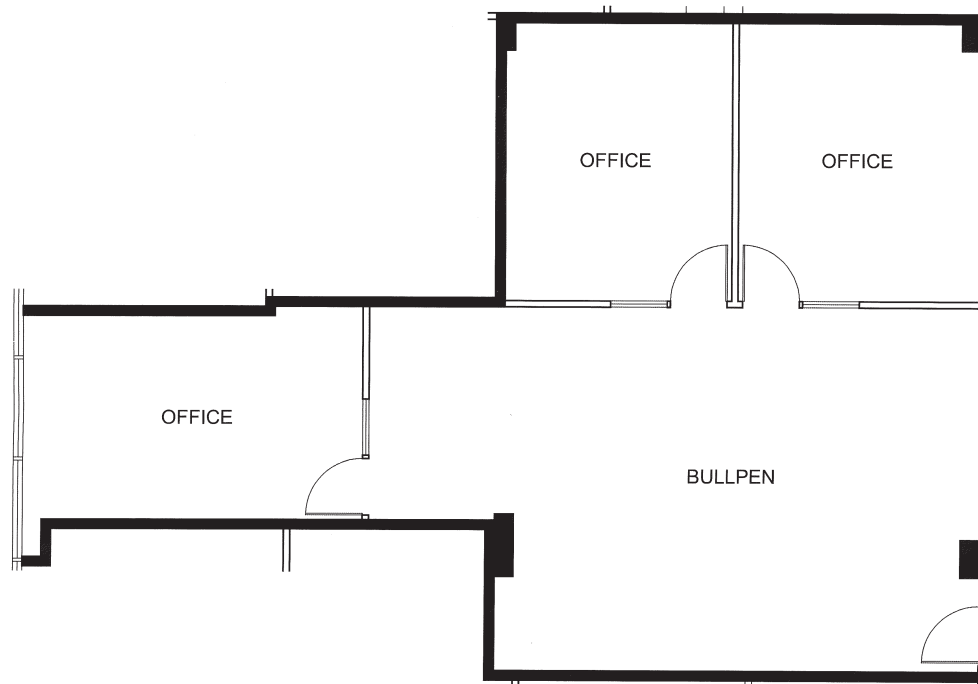


Lee & Associates® - LA North/Ventura, Inc. • Corporate ID #01191898  
A Member of the Lee & Associates® Group of Companies  
5707 Corsa Ave, Suite 200, Westlake Village, CA 91362  
P:818.223.4388 F:818.591.1450

No warranty or representation is made to the accuracy of the foregoing information. Terms of sale or lease and availability are subject to change or withdrawal without notice.

# Parkway Plaza Office Space For Lease | 23945 Calabasas Road | Calabasas

Floorplan: Suite 204 - 1,360 RSF



\*Not to scale

**JAY RUBIN** | [jrubin@lee-re.com](mailto:jrubin@lee-re.com)  
Principal | [JayRubin-RE.com](http://JayRubin-RE.com)  
818.223.4385 | License ID# 01320005

**EUGENE KIM** | [ekim@lee-re.com](mailto:ekim@lee-re.com)  
Principal | License ID# 01521416  
818.444.4919

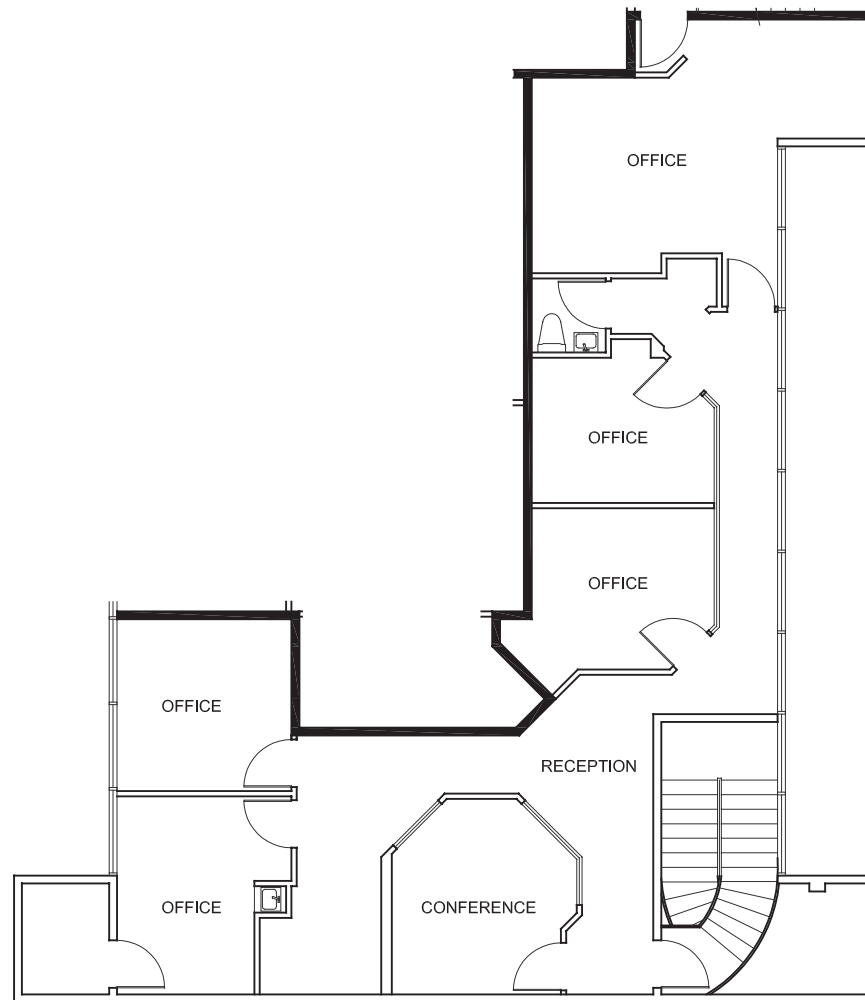


Lee & Associates® - LA North/Ventura, Inc. • Corporate ID #01191898  
A Member of the Lee & Associates® Group of Companies  
5707 Corsa Ave, Suite 200, Westlake Village, CA 91362  
P:818.223.4388 F:818.591.1450

No warranty or representation is made to the accuracy of the foregoing information. Terms of sale or lease and availability are subject to change or withdrawal without notice.

# Parkway Plaza Office Space For Lease | 23945 Calabasas Road | Calabasas

Floorplan: Suite 208 - 2,508 RSF



\*Not to scale

**JAY RUBIN** | [jrubin@lee-re.com](mailto:jrubin@lee-re.com)  
Principal | [JayRubin-RE.com](http://JayRubin-RE.com)  
818.223.4385 | License ID# 01320005

**EUGENE KIM** | [ekim@lee-re.com](mailto:ekim@lee-re.com)  
Principal | License ID# 01521416  
818.444.4919



Lee & Associates® - LA North/Ventura, Inc. • Corporate ID #01191898  
A Member of the Lee & Associates® Group of Companies  
5707 Corsa Ave, Suite 200, Westlake Village, CA 91362  
P:818.223.4388 F:818.591.1450

No warranty or representation is made to the accuracy of the foregoing information. Terms of sale or lease and availability are subject to change or withdrawal without notice.