

19100 LAHSER ROAD
DETROIT, MICHIGAN

RETAIL FOR SALE OR LEASE
1,535 Square Feet Available



**SIGNATURE
ASSOCIATES**
KNOW SIGNATURE | KNOW RESULTS

PRICE REDUCED



PROPERTY FEATURES

- 1,535 available square feet
- Zoned B-4
- 8 parking spaces
- Lease Rate: \$2,500/month NNN
- Sale Price: \$349,000 (\$227.36/sq. ft.)

Comments: Excellent opportunity available for lease or sale. Former Burger King restaurant located at the hard-signaled corner lot of 7 Mile and Lahser Roads. Great site for many uses!



For more information, please contact:

MARVIN PETROUS
(248) 359 0647
mpetrous@signatureassociates.com

SIGNATURE ASSOCIATES
One Towne Square, Suite 1200
Southfield, MI 48076
www.signatureassociates.com

19100 Lahser Road – Detroit, Michigan

Retail For Sale or Lease

1,535
Square Feet
AVAILABLE

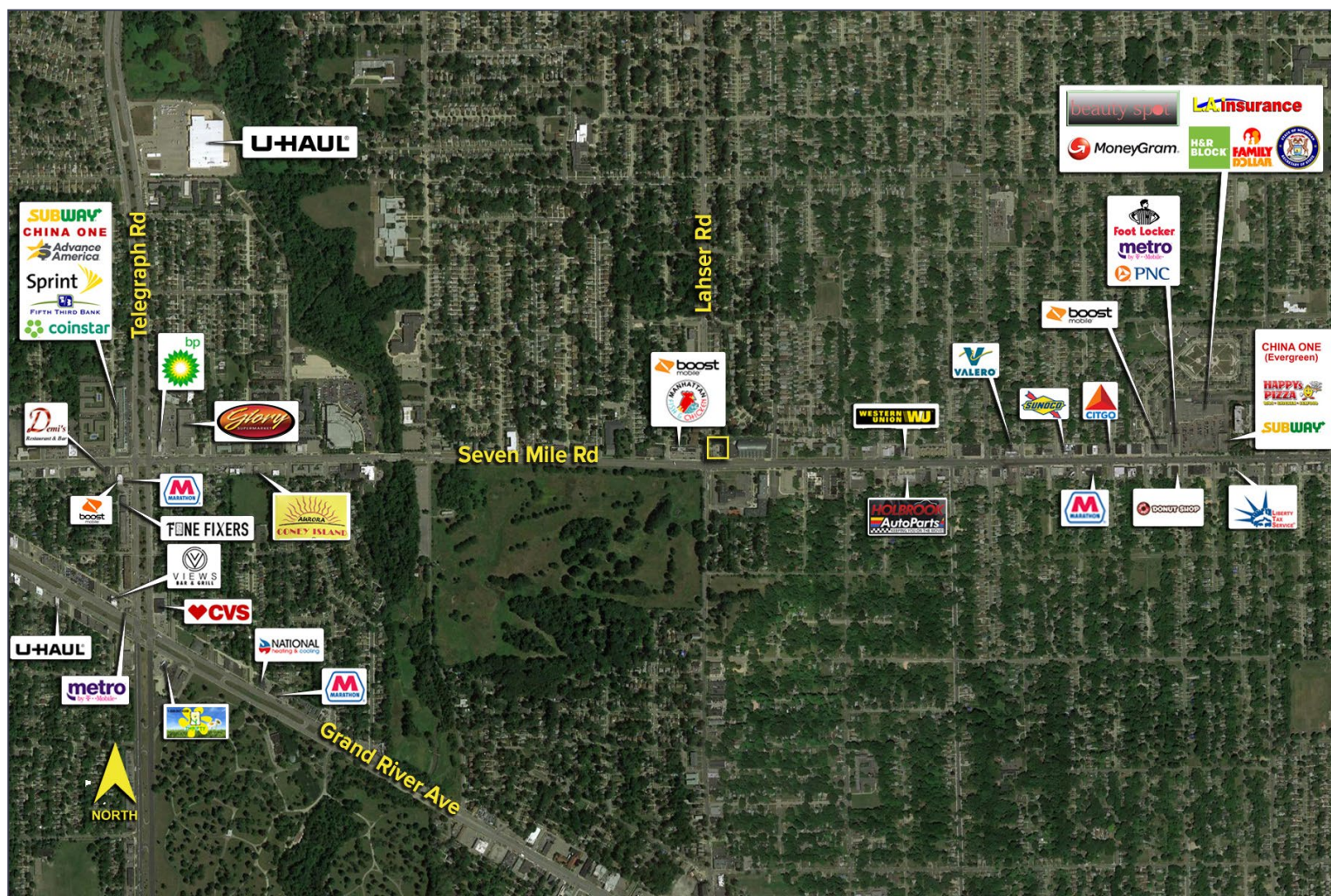


DEMOGRAPHICS

	POPULATION	MED. HH INCOME
1 MILE	17,917	\$41,741
3 MILE	119,043	\$53,511
5 MILE	323,783	\$58,695

TRAFFIC COUNTS (TWO-WAY)

12,582	Lahser Rd. N. of 7 Mile 2-Way
10,392	Lahser Rd. S. of 7 Mile 2-Way
16,345	7 Mile W. of Lahser Rd. 2-Way
16,269	7 Mile E. of Lahser Rd. 2-Way



For more information, please contact:

MARVIN PETROUS

(248) 359 0647

mpetrous@signatureassociates.com

SIGNATURE ASSOCIATES

One Towne Square, Suite 1200

Southfield, MI 48076

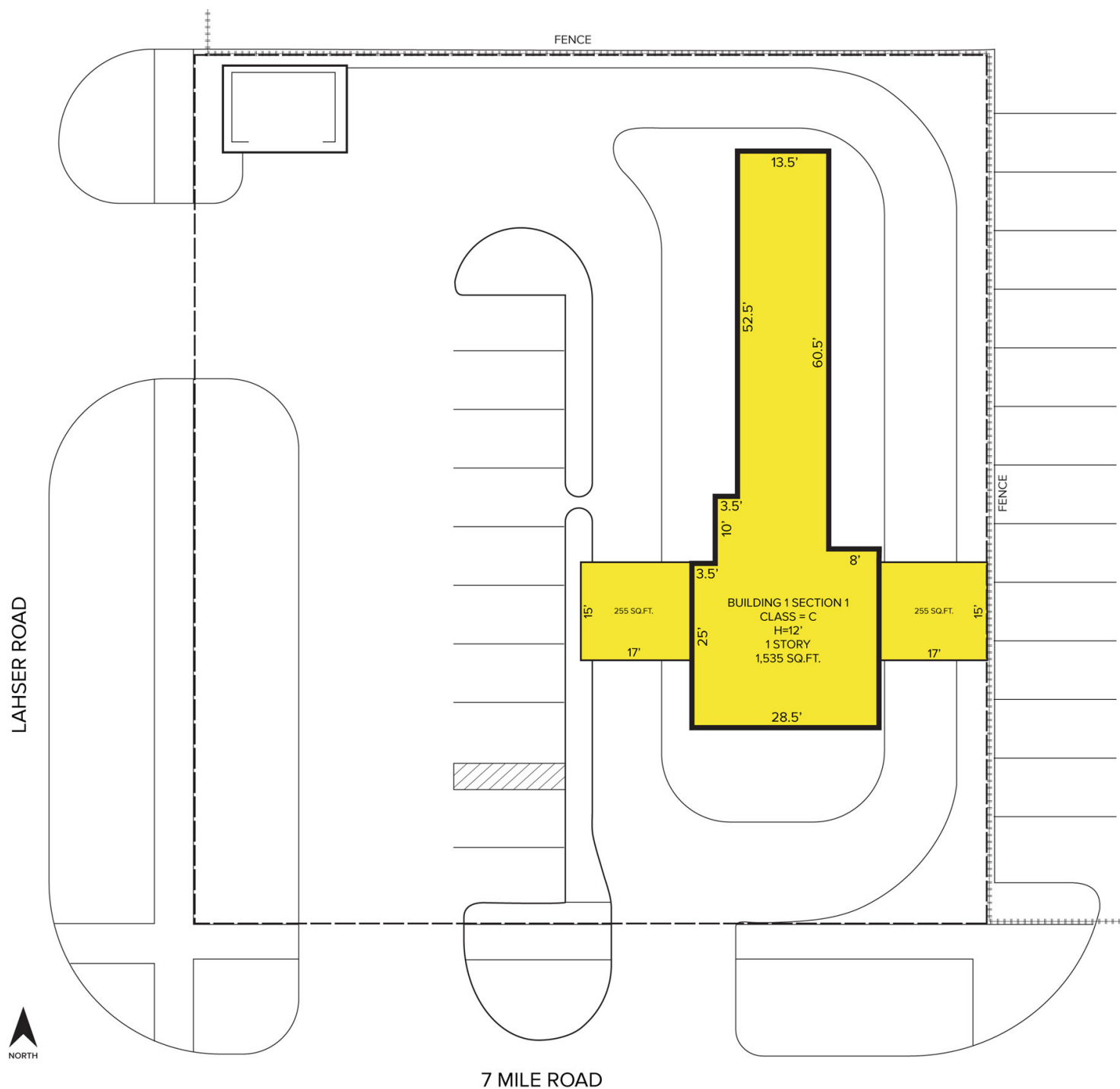
www.signatureassociates.com

19100 Lahser Road – Detroit, Michigan

Retail For Sale or Lease

1,535
Square Feet
AVAILABLE

Site Plan



For more information, please contact:

MARVIN PETROUS
(248) 359 0647
mpetrous@signatureassociates.com

SIGNATURE ASSOCIATES
One Towne Square, Suite 1200
Southfield, MI 48076
www.signatureassociates.com