



**For Lease**

# 2178 S. Centurion Pl. Boise, ID

## Property Details

Property Type	Industrial
Zoning	M-1D - Light Industrial
Loading Doors	Two 12' x 14' grade level One 8' x 14' grade level

## Space Available

Space Type	Size	Lease Rate
Office	1,000 SF	
Warehouse	3,200 SF	
Building Total	4,200 SF	\$1.19 PSF NNN
Fenced Yard	16,000 SF	\$0.13 PSF

\*Additional 2,000 SF of mezzanine storage at no cost.

Estimated NNN Expenses \$0.20 PSF

**Contact:**

**Michelle Torres Ogden**  
208 514 7121  
michelle.ogden@colliers.com

**Devin Ogden, MBA, CCIM, SIOR**  
208 472 1668  
devin.ogden@colliers.com

---

755 West Front Street, Suite 300  
Boise, Idaho 83702  
208 345 9000  
colliers.com/idaho

## Highlights

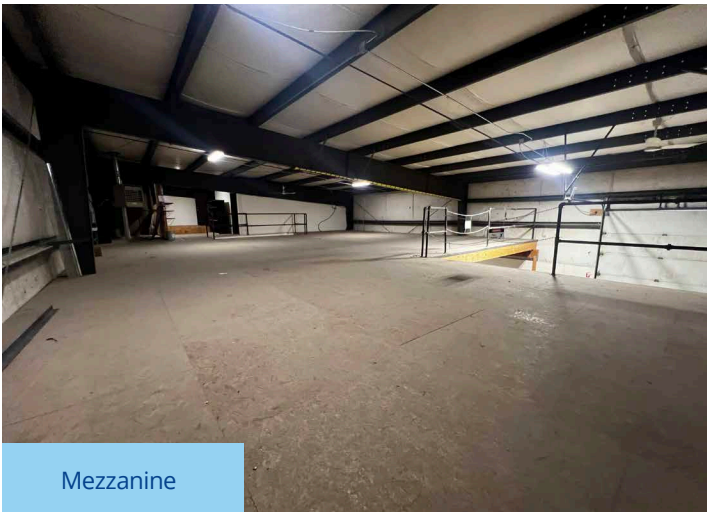
- 16,000 SF fenced yard
- 3-phase power
- Great access to I-84
- Shop: 18' - 21' clear height
- Warehouse: 9' 2" clear height under mezzanine
- 7' 6" - 10' 9" above mezzanine
- **Available immediately**

2178 S Centurion Pl | For Lease

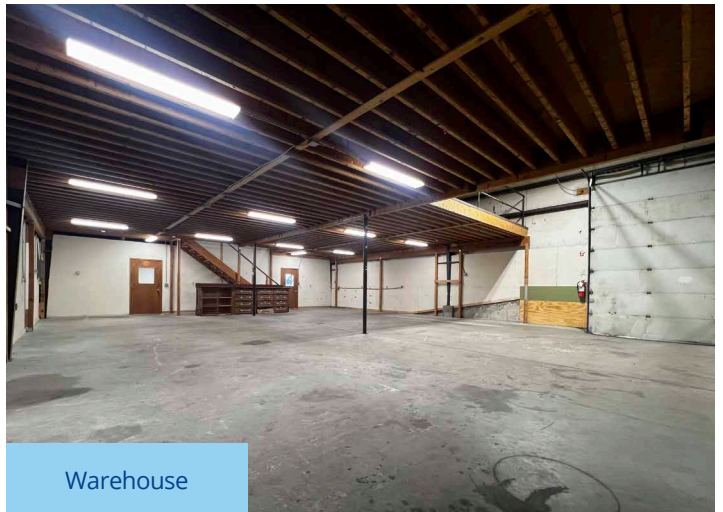
# Photo Gallery



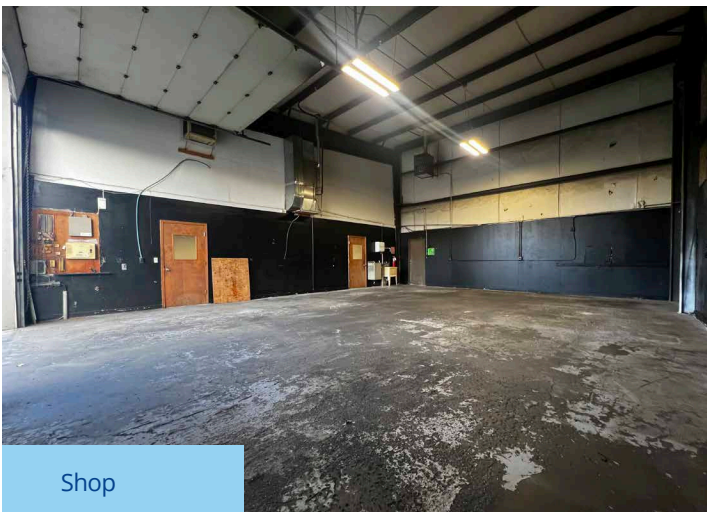
Office



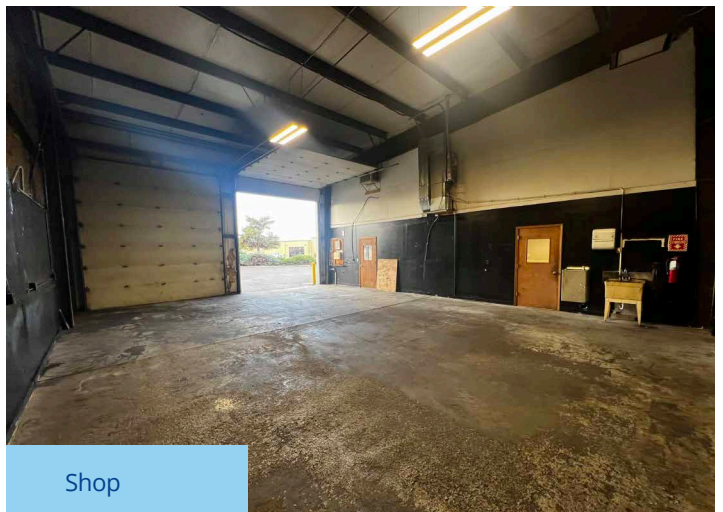
Mezzanine



Warehouse



Shop

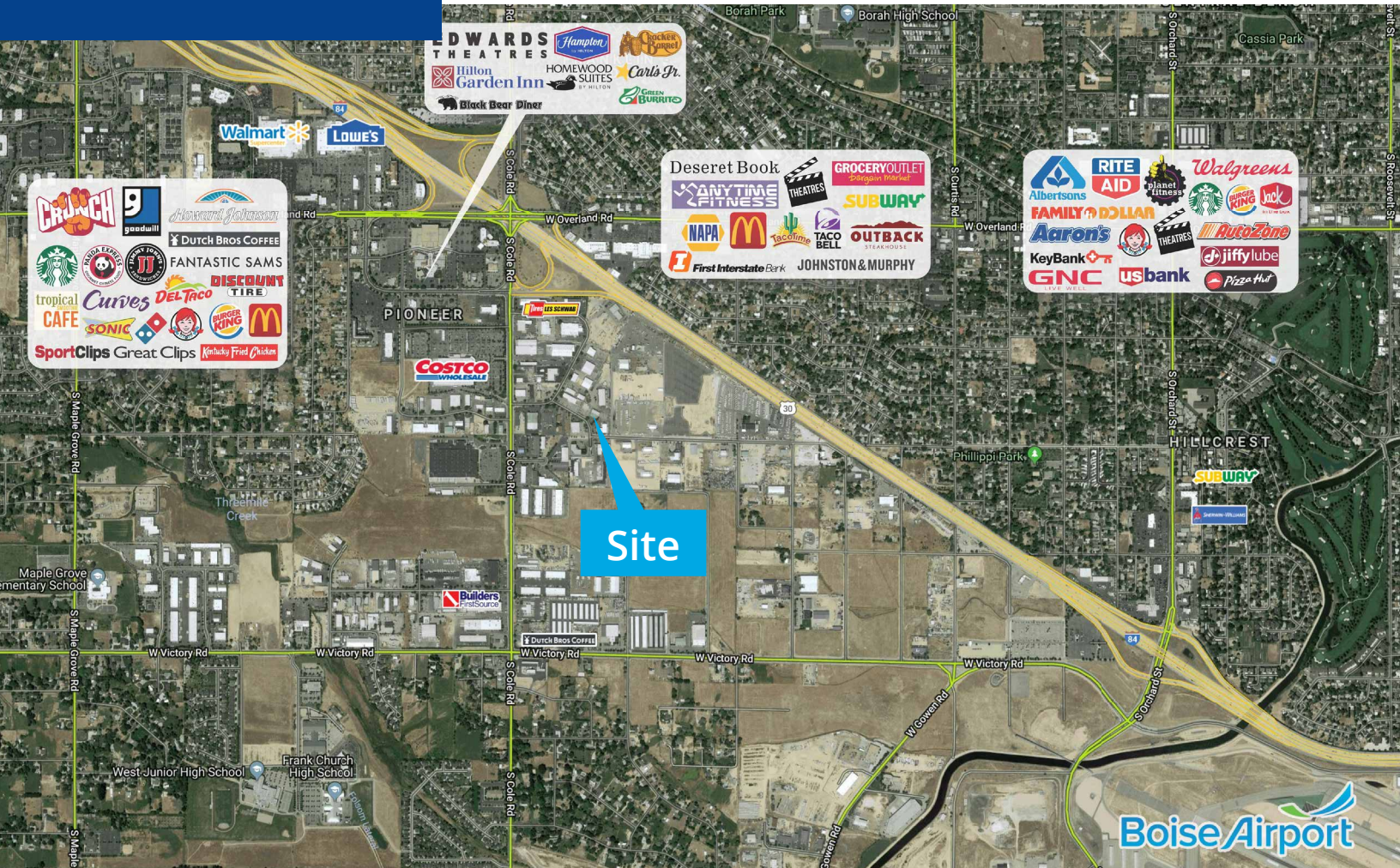


Shop

# Location

Google Map

Street View



755 West Front Street, Suite 300  
Boise, Idaho 83702  
208 345 9000  
colliers.com/idaho

This document has been prepared by Colliers for advertising and general information only. Colliers makes no guarantees, representations or warranties of any kind, expressed or implied, regarding the information including, but not limited to, warranties of content, accuracy and reliability. Any interested party should undertake their own inquiries as to the accuracy of the information. Colliers excludes unequivocally all inferred or implied terms, conditions and warranties arising out of this document and excludes all liability for loss and damages arising there from. This publication is the copyrighted property of Colliers and /or its licensor(s). © 2024. All rights reserved. This communication is not intended to cause or induce breach of an existing listing agreement. Colliers Paragon, LLC.