

# OFFICE SPACES FOR LEASE

בסייד

ON WEST THIRD STREET

8727 W. 3RD STREET, LOS ANGELES, CA 90048

**Jeffrey E. Resnick**

310.922.1717

[jresnick@cagre.com](mailto:jresnick@cagre.com)

Lic. 00405333

**Adam Funk**

310.666.0124

[afunk@cagre.com](mailto:afunk@cagre.com)

Lic. 02129715



ENTRANCE

# SPACE INFORMATION

# METROPOLITAN THEATRES CORPORATION

8727

These materials are based on information and content provided by others, which we believe are accurate. No guarantee, warranty or representation is made by Commercial Asset Group, Inc. or its personnel. All interested parties must independently verify accuracy and completeness. As well, any projections, assumptions, opinion, or estimates are used for example only and do not represent the current or future performance of the identified property. Your tax, financial, legal and toxic substance advisors should conduct a careful investigation of the property and its suitability for your needs, including land use limitations. The property is subject to prior lease, sale, change of price, or withdrawal from the market without notice.

## AVAILABLE SUITES

SUITE 203: ±3,600 RSF  
(DIVISIBLE)

## RENTAL RATE

\$2.75 PSF, FSG

## TERM

NEGOTIABLE

## AVAILABILITY

1/1/2024

## PARKING

SPACES AVAILABLE AT  
\$150/SPACE/MO

# NEIGHBORING TENANTS



a.o.c.

BEVERLY  
CENTER



••••  
GEORGETOWN CUPCAKE

JOAN'S  
ON THIRD



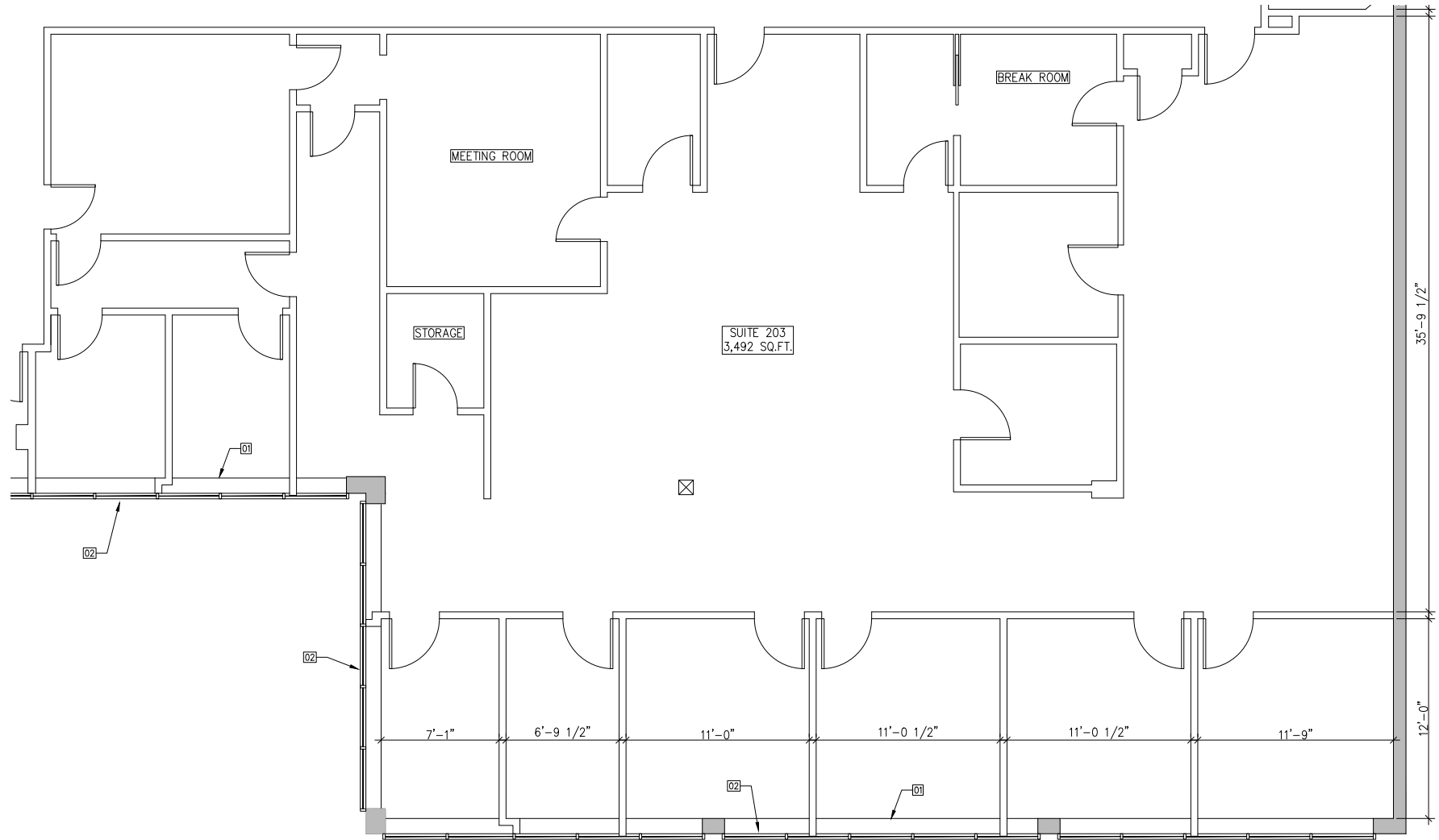
tocaya  
MODERN MEXICAN

THE HENRY

# SUITE 203



±3,600 SF



IMAGES





**Jeffrey E. Resnick**

310.922.1717

[jresnick@cagre.com](mailto:jresnick@cagre.com)

Lic. 00405333

**Adam Funk**

310.666.0124

[afunk@cagre.com](mailto:afunk@cagre.com)

Lic. 02129715

---

**Commercial Asset Group**

1801 Century Park East, Ste 1550

Los Angeles, CA 90067

P 310.275.8222 F 310.275.8223

[www.cagre.com](http://www.cagre.com) Lic. 01876070



**COMMERCIAL  
ASSET GROUP**