

4,770 SF
OFFICE
NOW AVAILABLE
FOR LEASE

Town and Country Business Plaza

1111 Town and Country Rd.
Suite 24, 25, 26 Orange, CA



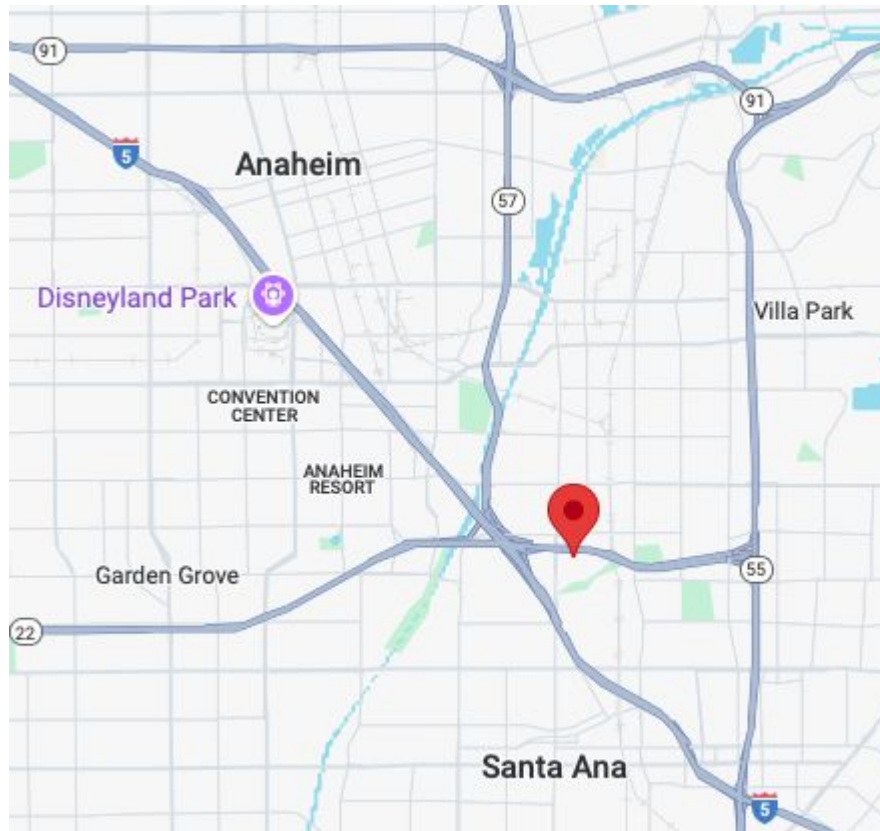
PROPERTY HIGHLIGHTS:

- Fully built-out two-story office
- Competitive lease rate
- Convenient Central OC location
- Professional office setting
- Office and retail uses permitted
- Efficient floor plan
- Divisible to +/- 2K SF
- Easy access to 5, 57, 22, and 55 FWY's
- Ample parking
- Outdoor seating areas
- Several amenities nearby

Leasing Contacts:

Justin Hugron, CCIM
Senior Vice President
714.642.7690
justin@ashwillassociates.com
DRE# 02069980
Corp.DRE# 01291393

Chantel Aguilar
Senior Vice President
562.447-0665
chantel@ashwillassociates.com
DRE# 01972085
Corp.DRE# 01291393

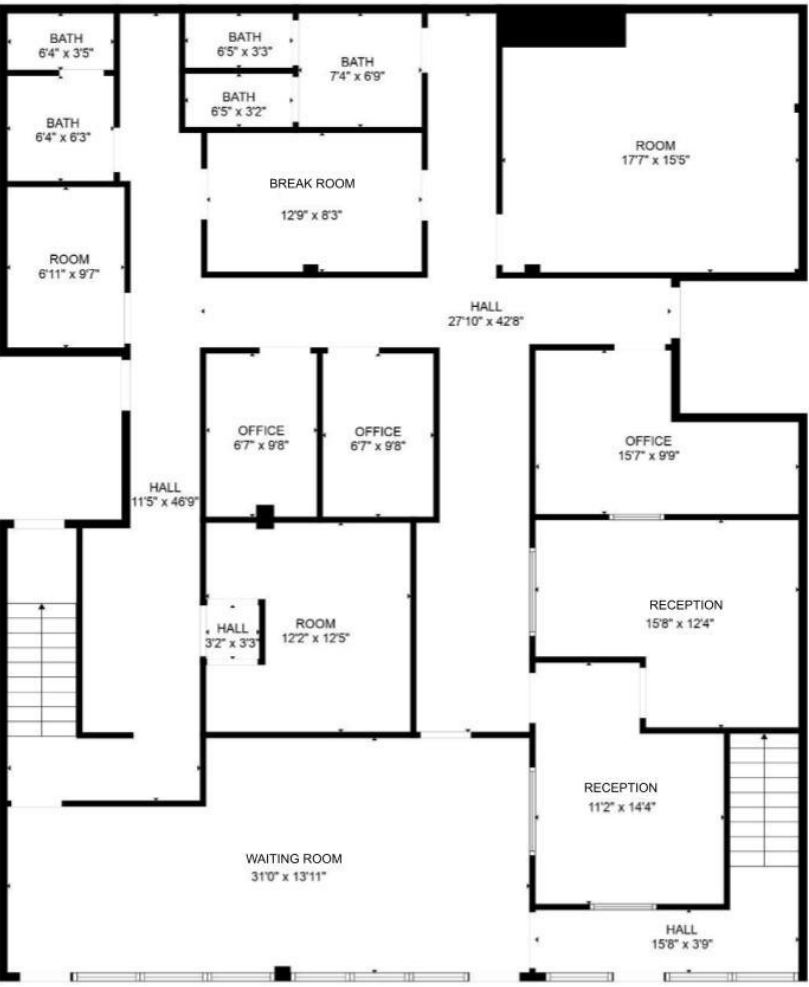


Ashwill
Associates
COMMERCIAL REAL ESTATE

INTERIOR PHOTOS

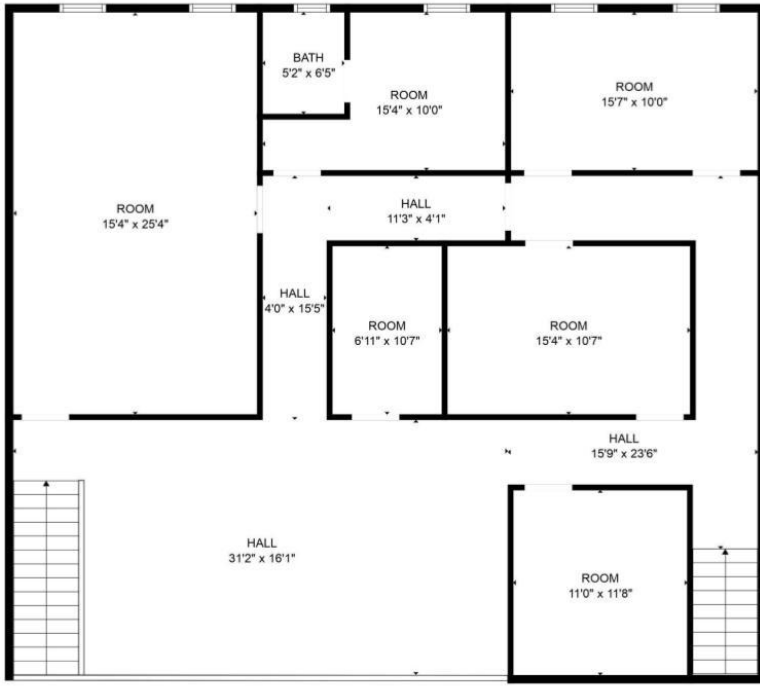


FLOOR PLAN & SUITE NOTES



First Floor

Second Floor



SUITE HIGHLIGHTS

1111 Town and Country.
Suite 24, 25, 26

- Two story office/retail space
- 3 Entrances/Exits
- Divisible to 2,000 SF

EXTERIOR PHOTOS



FOR MORE INFO
OR TO TOUR:

Justin Hugron, CCIM
Senior Vice President
949.216.0469
justin@ashwillassociates.com
DRE# 02069980
Corp.DRE# 01291393

Chantel Aguilar
Senior Vice President
562.447-0665
chantel@ashwillassociates.com
DRE# 01972085
Corp.DRE# 01291393

Ashwill
Associates
COMMERCIAL REAL ESTATE