

GROUND FLOOR
MEDICAL CONDO
FOR SALE

PRICE \$1,395,000
APPROX SIZE 959 SQ FT
COMMON CHARGES \$1,627 PER MONTH
ASSESSMENTS \$1,627 PER MONTH
FINANCING 90% MAXIMUM
TAXES \$27,533 PER YEAR



25 CENTRAL PARK WEST, 1R
LINCOLN SQUARE, BETWEEN WEST 62ND STREET AND WEST 63RD STREET

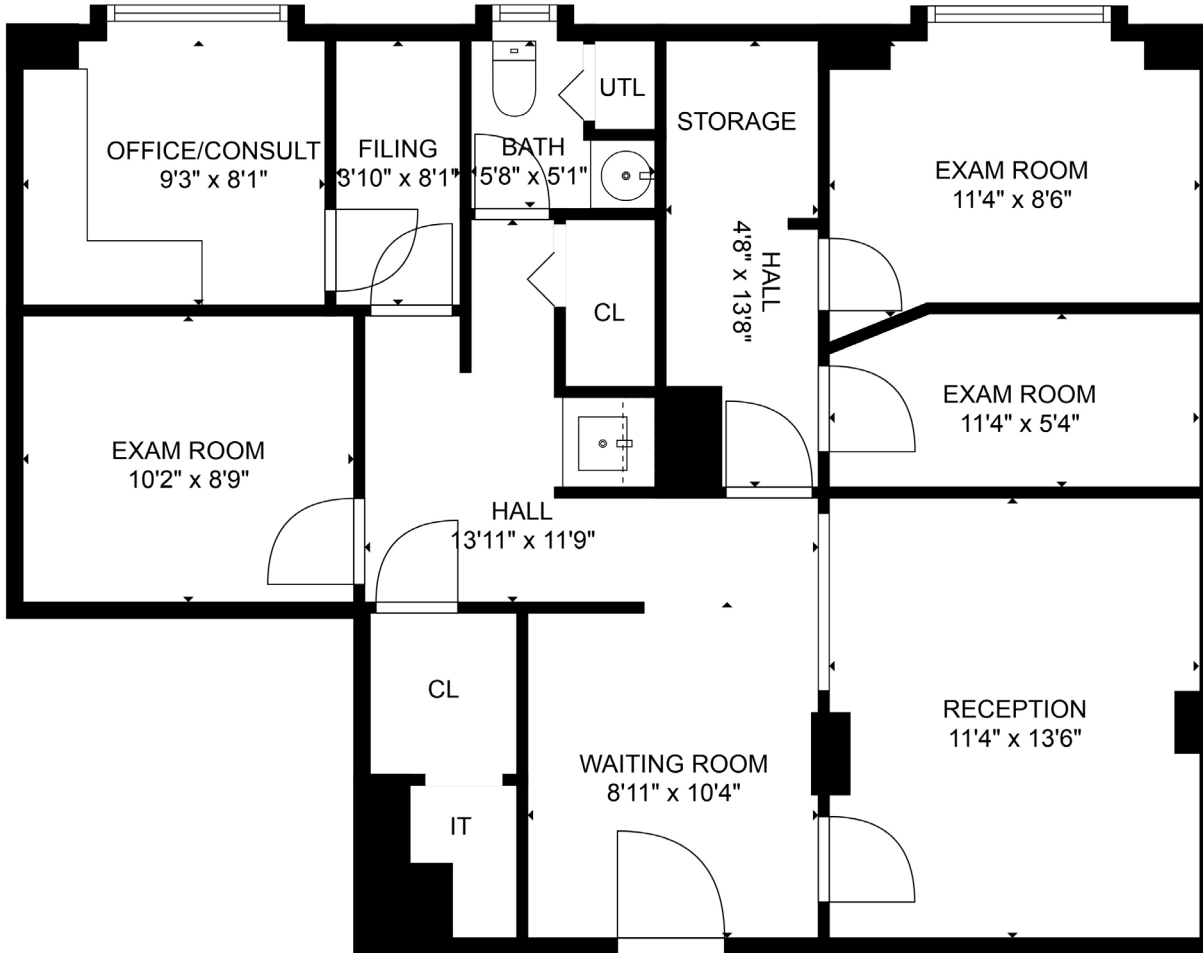
LAYOUT

- WAITING ROOM
- RECEPTION
- THREE EXAM ROOMS
- OFFICE/CONSULT
- IT ROOM
- RESTROOM

ADDITIONAL FEATURES

- 3 WINDOWS FACING WEST 63RD STREET
- CENTRAL AIR CONDITIONING
- ADAPTABLE TO ANY MEDICAL SPECIALTY





FLOOR PLAN FOR ILLUSTRATIVE PURPOSES ONLY



Paul L Wexler

LICENSED ASSOCIATE
REAL ESTATE BROKER

P: 212.836.1075
E: PLW@corcoran.com

Josef Yadgarov

LICENSED ASSOCIATE
REAL ESTATE BROKER

P: 212.836.1097
E: josef.yadgarov@corcoran.com

Alisia Ramlochan

LICENSED ASSOCIATE
REAL ESTATE BROKER

P: 212.893.1450
E: alisia.ramlochan@corcoran.com

Elliot Dennis

LICENSED REAL ESTATE
SALESPERSON

P: 212.893.1746
E: elliot.dennis@corcoran.com

Cosmin Bita

LICENSED REAL ESTATE
SALESPERSON

P: 917.602.5754
E: cosmin.bit@corcoran.com

Kurt Herold

LICENSED ASSOCIATE
REAL ESTATE BROKER

P: 212.323.3817
E: kherold@corcoran.com