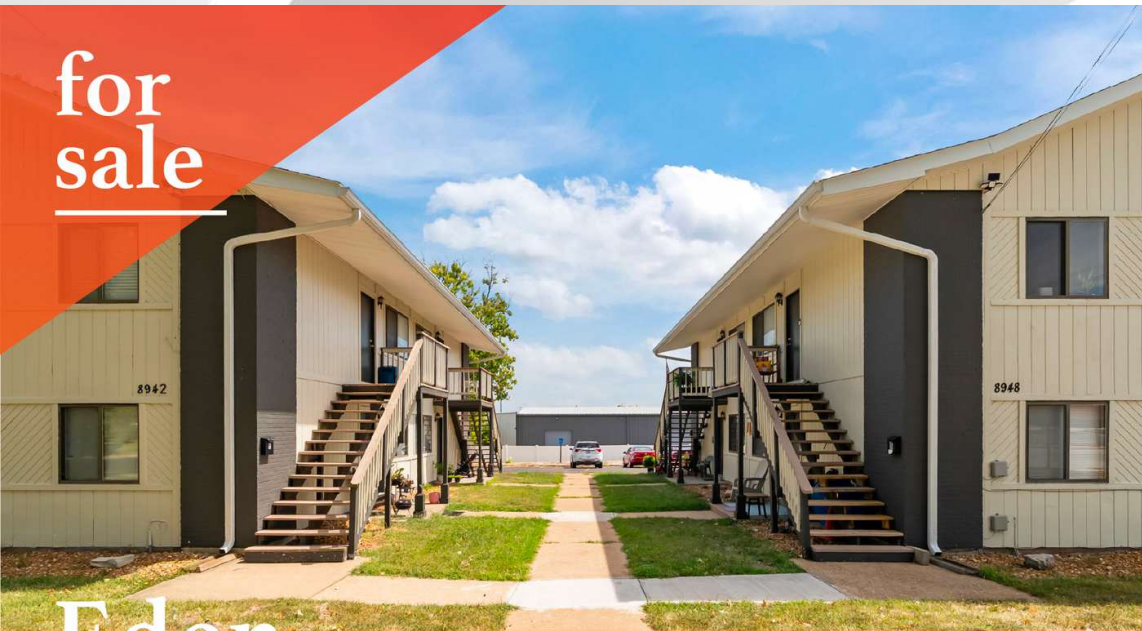


for
sale



Edén
apartments
8942-48 eden ave
st. louis, mo 63123

8
apartments

2 bed, large
updated
units

great
south county
location

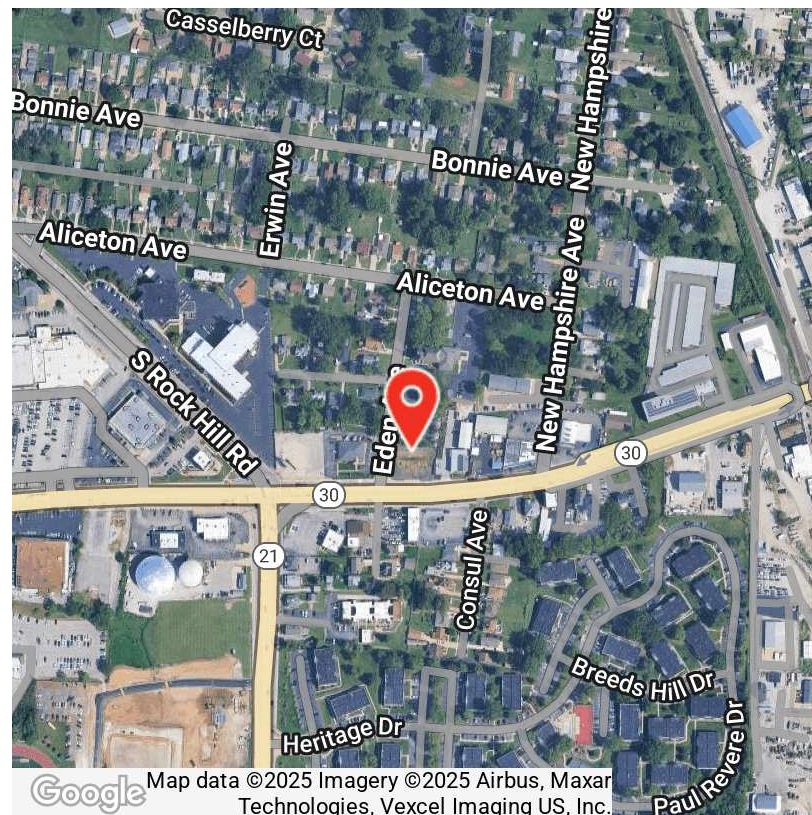


PROPERTY HIGHLIGHTS

- Beautiful Renovated - 8 Units
- All Two Bed, One Bath Units
- In-Unit Laundry and Central HVAC in all Units
- Stabilized with strong upside - Below Market Rents
- Located in Affton, MO - high demand submarket
- Ample Off-Street Parking

OFFERING SUMMARY

Sale Price:	\$1,150,000
Number of Units:	8
Lot Size:	0.49 Acres
Building Size:	6,864 SF
Unit Mix:	All 2 Bed / 1 Bath Units



Map data ©2025 Imagery ©2025 Airbus, Maxar Technologies, Vexcel Imaging US, Inc.



1000 S NEWSTEAD AVENUE | ST. LOUIS, MO 63110
SALIENTREALTYGROUP.COM

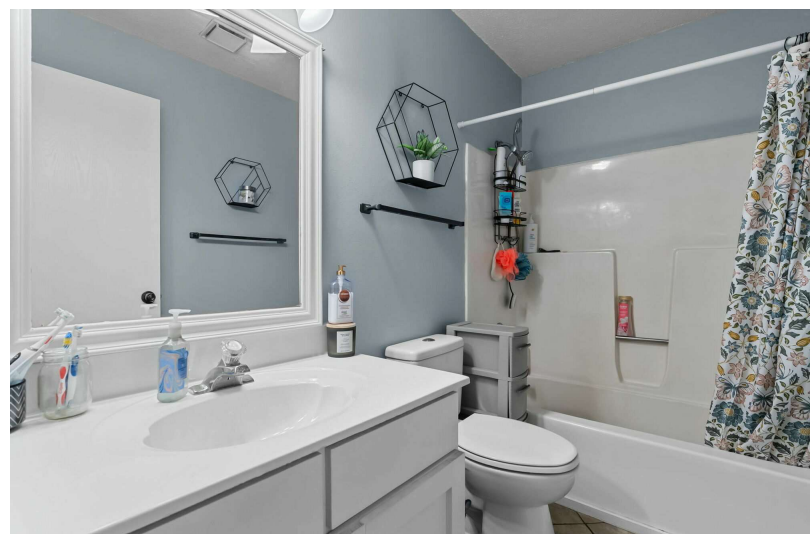
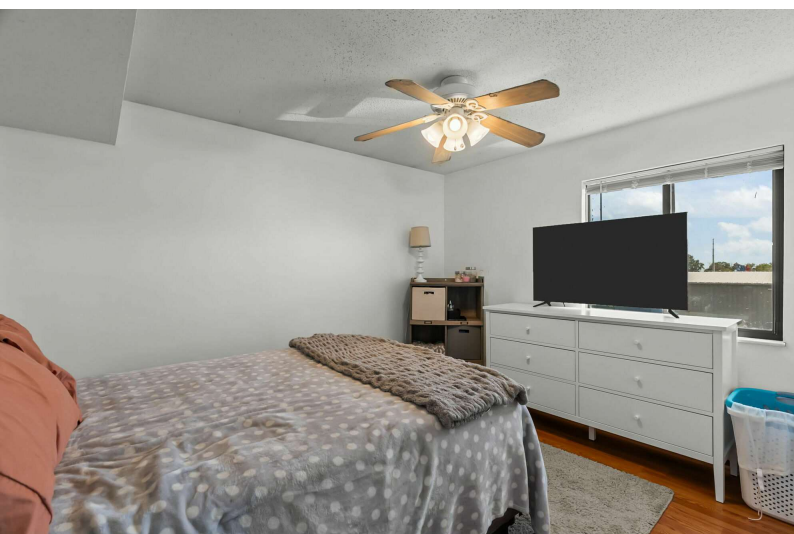
TIMOTHY MCCARTHY
314.451.7145

TMCCARTHY@SALIENTREALTYGROUP.COM
SENIOR ASSOCIATE

MATTHEW MILLSLAGE
314.208.2395

MMILLSLAGE@SALIENTREALTYGROUP.COM
ASSOCIATE

No expressed or implied warranty or representation is made as to the accuracy of the information contained herein. This property is submitted subject to errors, omissions, change of price, withdrawal without notice, prior lease or sale and any other listing conditions imposed by the principals.



1000 S NEWSTEAD AVENUE | ST. LOUIS, MO 63110
SALIENTREALTYGROUP.COM

TIMOTHY MCCARTHY
314.451.7145

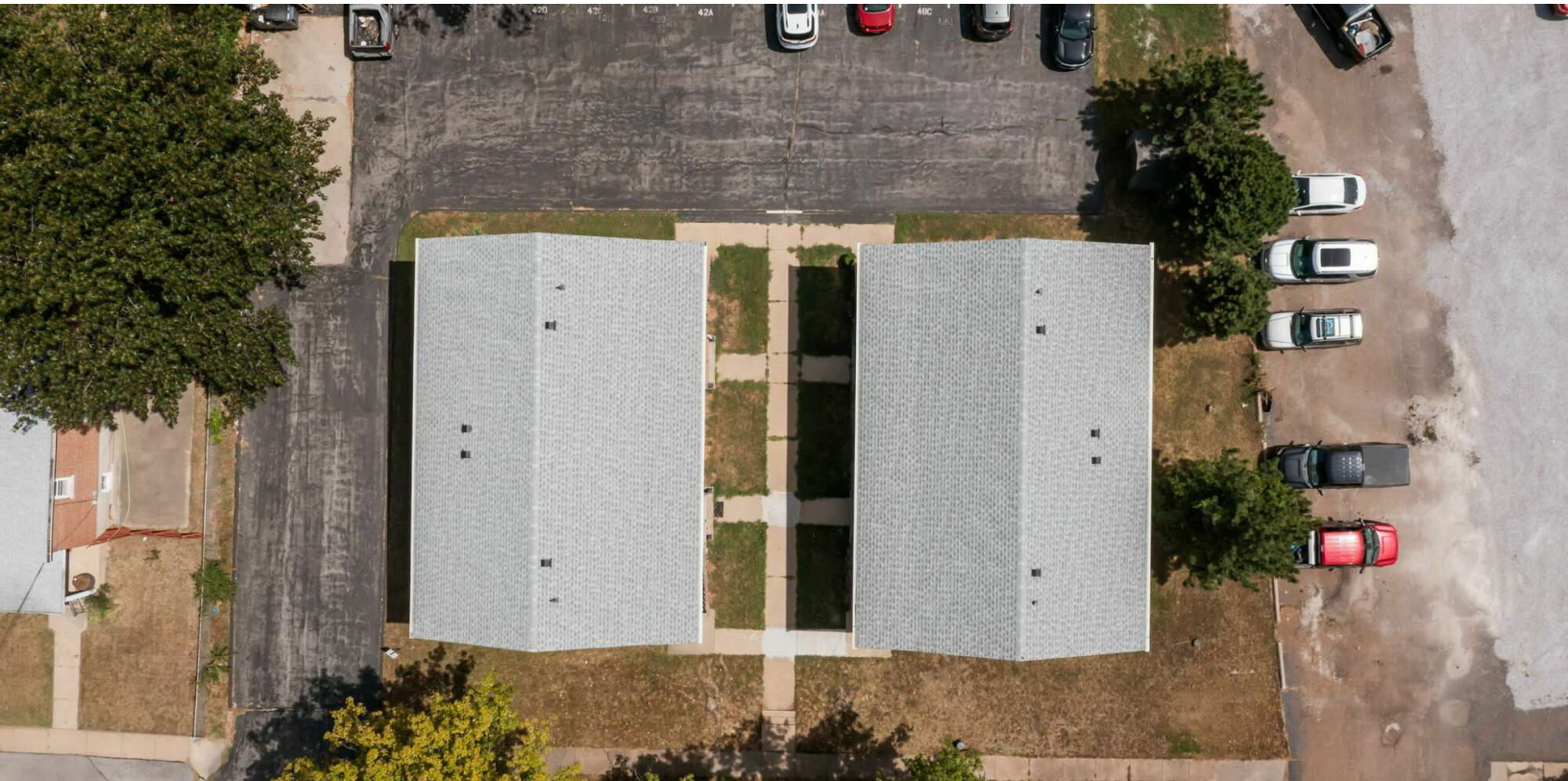
TMCCARTHY@SALIENTREALTYGROUP.COM
SENIOR ASSOCIATE

MATTHEW MILLSLAGLE
314.208.2395

MMILLSLAGLE@SALIENTREALTYGROUP.COM
ASSOCIATE

No expressed or implied warranty or representation is made as to the accuracy of the information contained herein. This property is submitted subject to errors, omissions, change of price, withdrawal without notice, prior lease or sale and any other listing conditions imposed by the principals.

UNIT	BEDROOMS	BATHROOMS	SIZE SF	RENT	RENT / SF	MARKET RENT	MARKET RENT / SF	LEASE END
8948A	2	1	900 SF	\$1,100	\$1.22	\$1,295	\$1.44	11/30/2025
8948B	2	1	900 SF	\$1,150	\$1.28	\$1,295	\$1.44	8.30/2025
8948C	2	1	900 SF	\$925	\$1.03	\$1,295	\$1.44	12/31/2024
8948D	2	1	900 SF	\$1,125	\$1.25	\$1,295	\$1.44	5/30/2026
8942A	2	1	900 SF	\$1,150	\$1.28	\$1,295	\$1.44	7/31/2027
8942B	2	1	900 SF	\$1,085	\$1.21	\$1,295	\$1.44	8/31/2026
8942C	2	1	900 SF	\$950	\$1.06	\$1,295	\$1.44	9/30/2025
8942D	2	1	900 SF	\$950	\$1.06	\$1,295	\$1.44	10/30/2025
TOTALS			7,200 SF	\$8,435	\$9.39	\$10,360	\$11.52	
AVERAGES			900 SF	\$1,054	\$1.17	\$1,295	\$1.44	



1000 S NEWSTEAD AVENUE | ST. LOUIS, MO 63110
SALIENTREALTYGROUP.COM

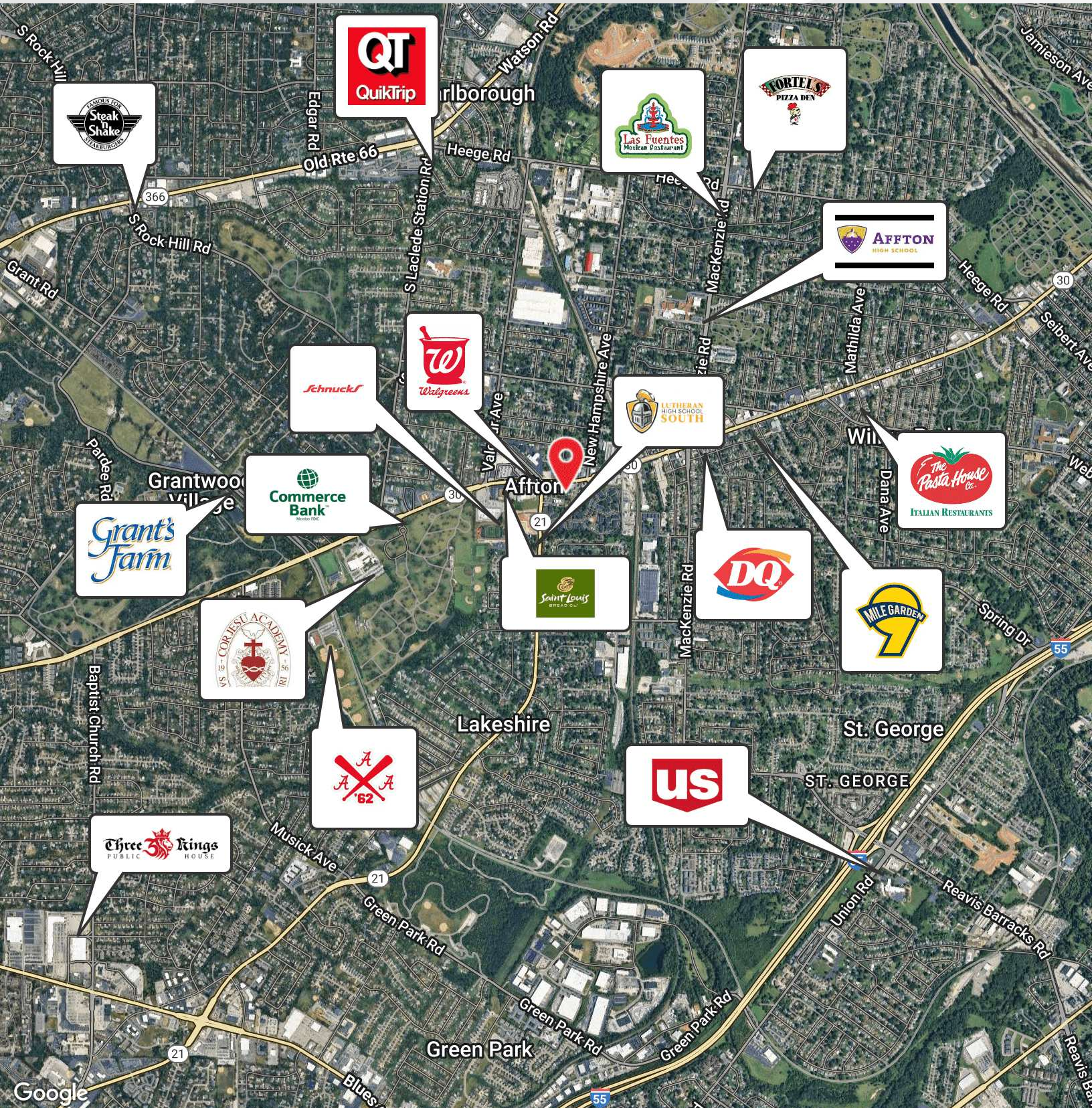
TIMOTHY MCCARTHY
314.451.7145

TMCCARTHY@SALIENTREALTYGROUP.COM
SENIOR ASSOCIATE

MATTHEW MILLSLAGLE
314.208.2395

MMILLSLAGLE@SALIENTREALTYGROUP.COM
ASSOCIATE

No expressed or implied warranty or representation is made as to the accuracy of the information contained herein. This property is submitted subject to errors, omissions, change of price, withdrawal without notice, prior lease or sale and any other listing conditions imposed by the principals.



1000 S NEWSTEAD AVENUE | ST. LOUIS, MO 63110
SALIENTREALTYGROUP.COM

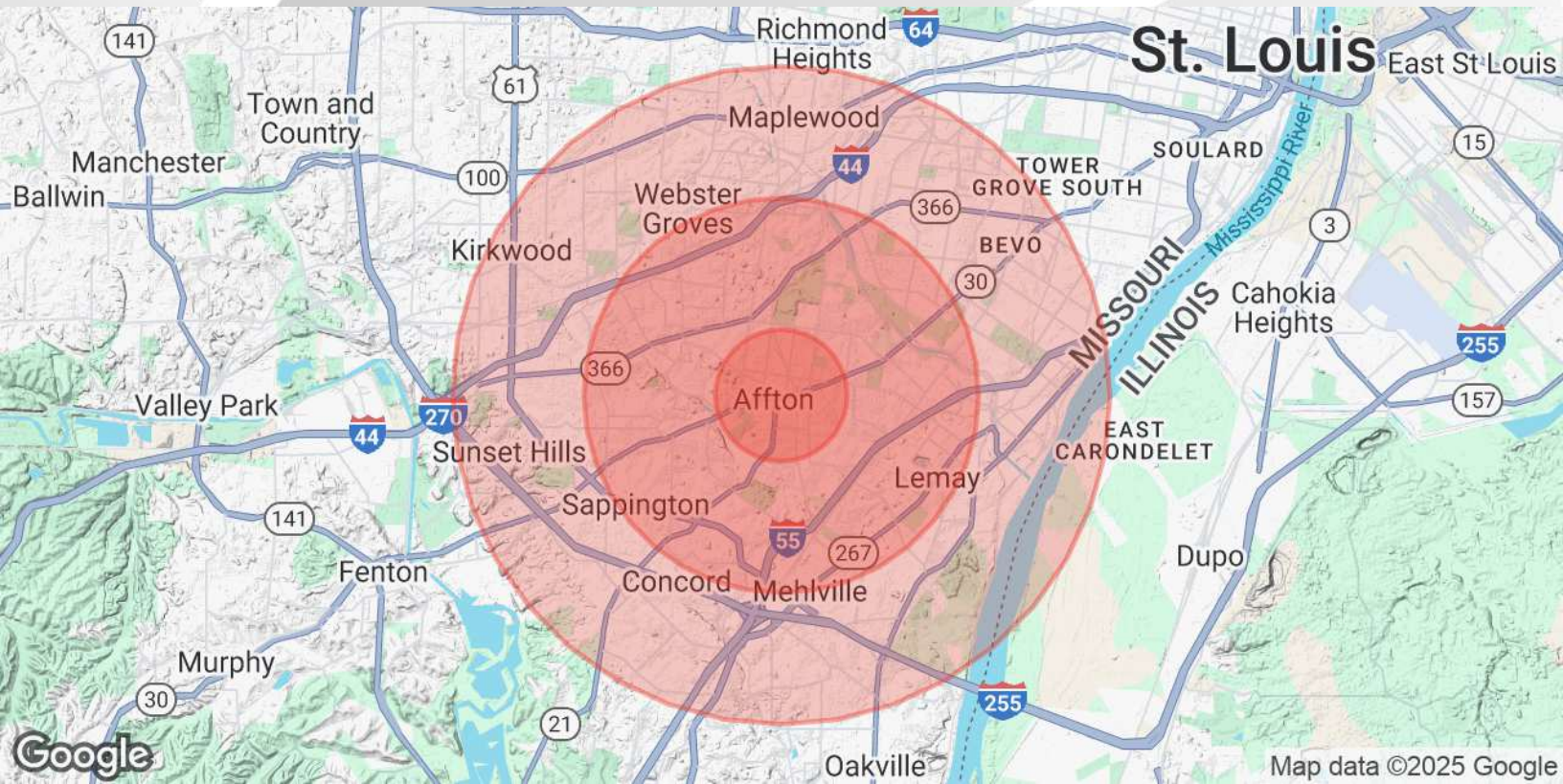
TIMOTHY MCCARTHY
314.451.7145

TMCCARTHY@SALIENTREALTYGROUP.COM
SENIOR ASSOCIATE

MATTHEW MILLSLACLE
314.208.2395

MMILLSLAGLE@SALIENTREALTYGROUP.COM
ASSOCIATE

No expressed or implied warranty or representation is made as to the accuracy of the information contained herein. This property is submitted subject to errors, omissions, change of price, withdrawal without notice, prior lease or sale and any other listing conditions imposed by the principals.

**POPULATION****1 MILE****3 MILES****5 MILES**

Total Population	12,532	114,293	293,849
Average Age	42	43	43
Average Age (Male)	40	41	41
Average Age (Female)	44	45	44

HOUSEHOLDS & INCOME**1 MILE****3 MILES****5 MILES**

Total Households	5,835	51,202	132,086
# of Persons per HH	2.1	2.2	2.2
Average HH Income	\$83,361	\$99,963	\$104,041
Average House Value	\$241,502	\$283,139	\$319,408

Demographics data derived from AlphaMap



1000 S NEWSTEAD AVENUE | ST. LOUIS, MO 63110
SALIENTREALTYGROUP.COM

TIMOTHY MCCARTHY
314.451.7145

TMCCARTHY@SALIENTREALTYGROUP.COM
SENIOR ASSOCIATE

MATTHEW MILLSLAGE
314.208.2395

MMILLSLAGE@SALIENTREALTYGROUP.COM
ASSOCIATE