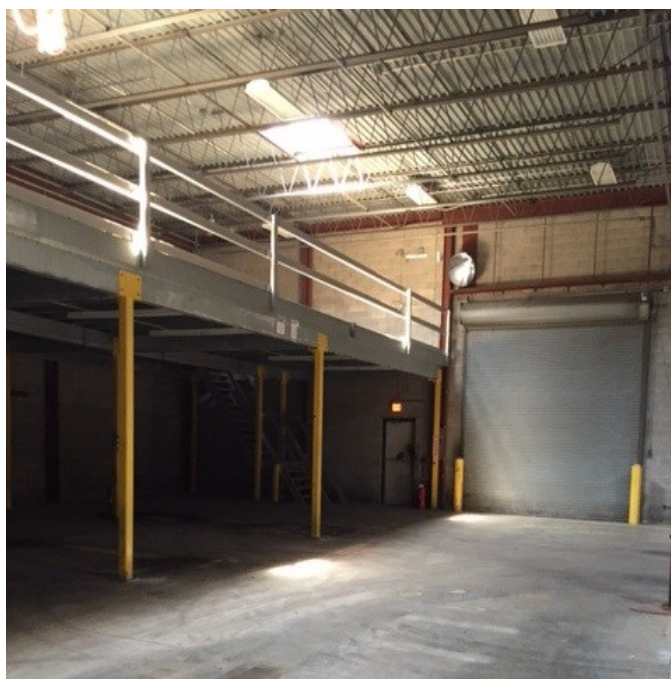
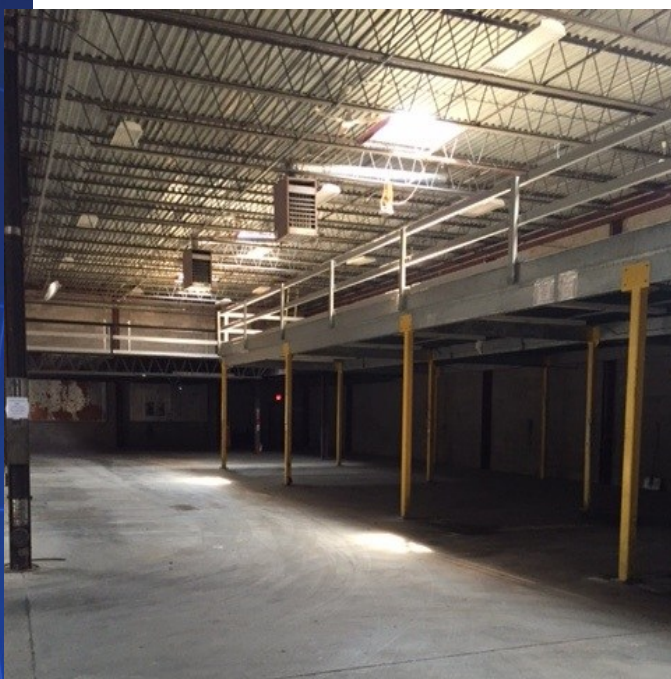




**Warehouse space
For Lease**
Exclusive

151 Dixon Ave. Amityville, NY 11701
6,500 sq. ft. Hi ceiling Warehouse with mezzanine



**6,500 sq. ft does not include
additional mezzanine storage**

Available Size: 6,500 sq. (130' x 50')
Offices: No offices,
No bathrooms
Ceiling Ht.: 22 ft.
Loading: 1 Drive-in door
Sprinklers: No
Comments: Clean warehouse space ideal
for dead storage. Price includes RE taxes
and electric, meter for gas heat

Lease Price: \$14.50 psf

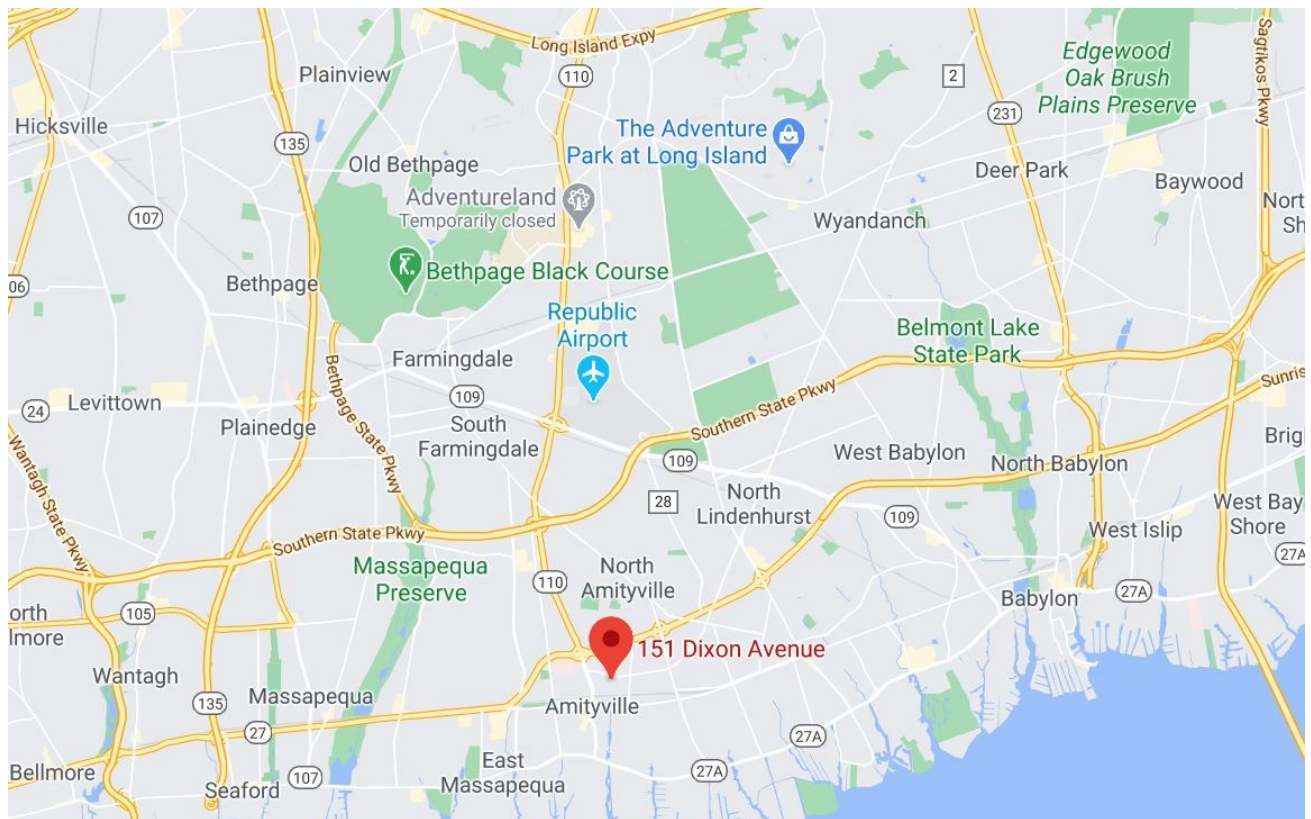
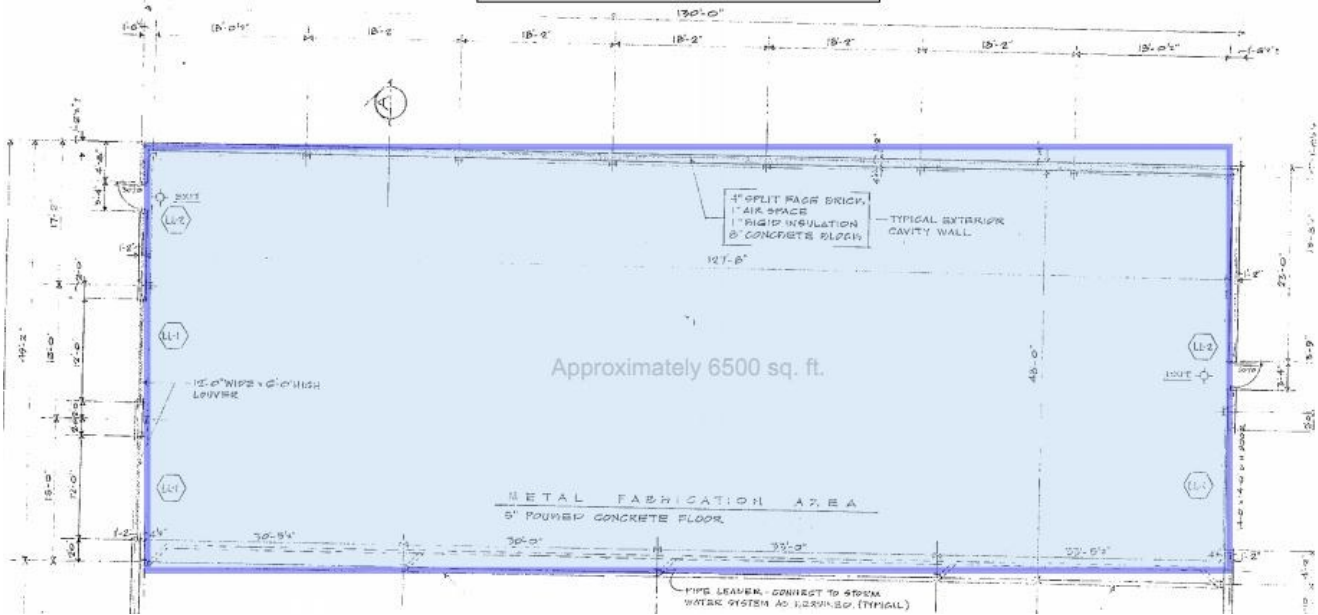


George Hubner, Managing Director
Office: 631-360-2290 • Cell: 516-901-2248
ghubner@CorporateCommercialRE.com
www.CorporateCommercialRealty.com

SALES ❖ TENANT REPRESENTATION ❖ LEASING

Information herein is believed correct but is not warranted. Purchaser is strongly encouraged to verify the accuracy of all material information contained in this listing sheet. This verification should include all information for Purchaser's intended use of the property for any particular purpose. All information contained herein are representations from many sources including the seller/owner. The broker has undertaken no independent investigation to verify the accuracy of the information provided. Images, content and design Copyrighted CCR 2008-2023

151 Dixon Ave. Amityville
6500 sq. ft Warehouse floor plan



George Hubner, Managing Director
Office: 631-360-2290 • Cell: 516-901-2248
ghubner@CorporateCommercialRE.com
www.CorporateCommercialRealty.com

SALES ❖ TENANT REPRESENTATION ❖ LEASING

Information herein is believed correct but is not warranted. Purchaser is strongly encouraged to verify the accuracy of all material information contained in this listing sheet. This verification should include all information for Purchaser's intended use of the property for any particular purpose. All information contained herein are representations from many sources including the seller/owner. The broker has undertaken no independent investigation to verify the accuracy of the information provided. Images, content and design Copyrighted CCR 2008-2023