

10225

WILLOW CREEK



For Sale or Lease

75,119 Square Feet Multi-Use Building in Scripps Ranch



BUILDING S P E C S

Ownership recently completed \$4.75m in building and site improvements including rooftop deck, hardscape/landscape, signage, and entrance facade improvements



LEASE/ SALE PRICE

Sale Price
\$14,750,000 (\$196 PSF)
Lease Rate
\$1.80 PSF/Month NNN



ELECTRICAL

New 4000 amp electrical service installed with all new transformers (480/277V) and switchgear installed.



GENERATOR

Permitted and ready for up to a 2 MW generator, pending Tenant requirements



HVAC

Project will be ready to support mechanical units for lab and manufacturing use



CLEAR HEIGHT

2nd Floor: ±14' to the beam & ±15' to the roof deck
1st Floor - Lower Clear: ±12' to beam & ±14' to the deck
1st Floor-Higher Clear ±14' to lowest beam & ±16' to the deck

Ability to accommodate some full building height (28') uses



LOADING

There are 6 dock positions served by 2 doors.



PARKING

±4.65AC site with 133 surface spaces & 22 carport stalls (2.2/1,000 sf with ability to expand and street parking adjacent.)



UTILITIES

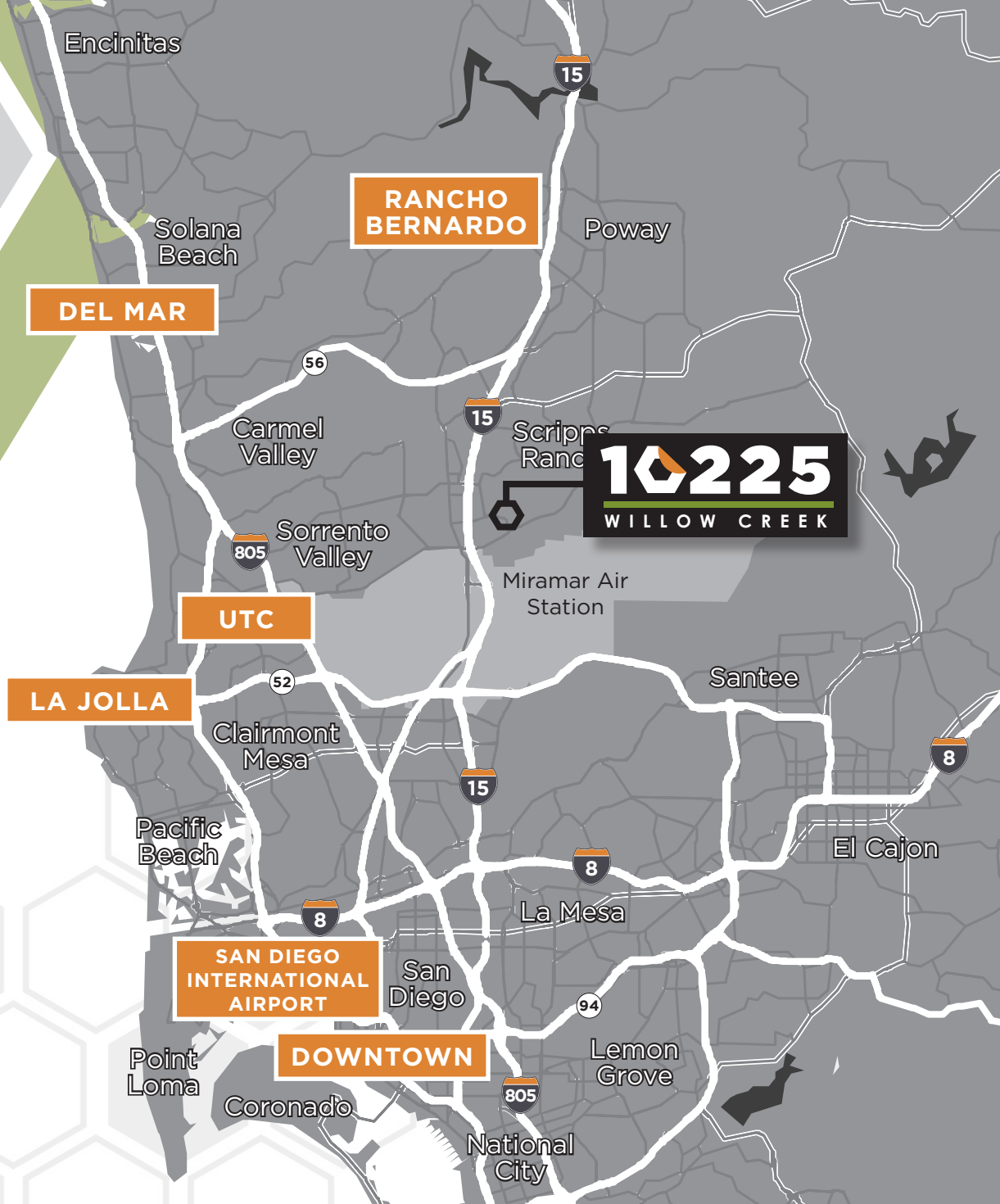
2" water meter services the building, new 6" sewer line from building to the street. Gas line is 1" and is SDGE approved to upgrade the meter to medium or high pressure, new meter pending tenant needs



ELEVATOR

One hydraulic elevator (installed 2014)

LOCATION



DRIVE TIMES TO

**RANCHO
BERNARDO**

14 MINUTES

UTC

16 MINUTES

DOWNTOWN

20 MINUTES

AIRPORT

20 MINUTES

DEL MAR

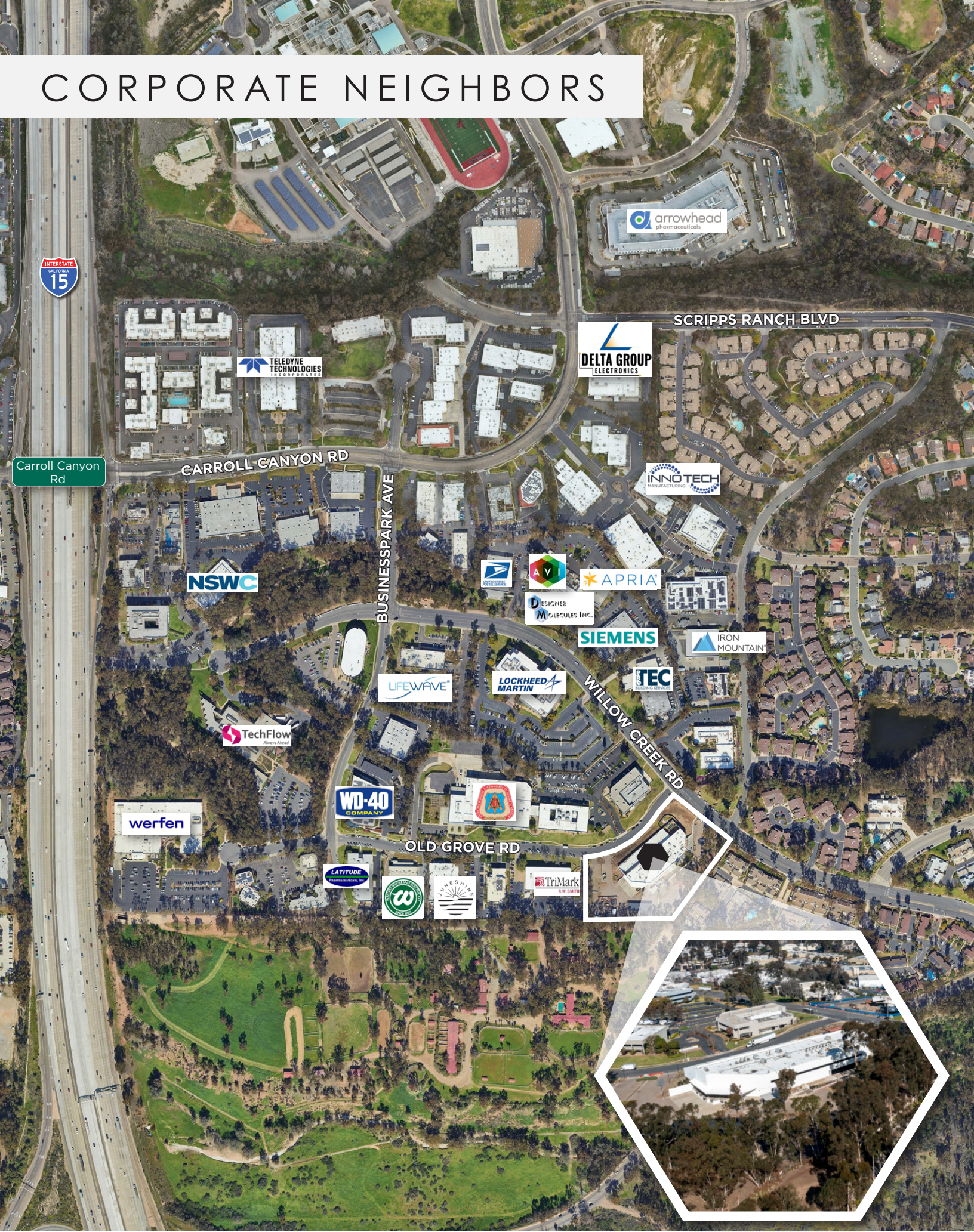
24 MINUTES

LA JOLLA

25 MINUTES



CORPORATE NEIGHBORS



Carroll Canyon Rd

CARROLL CANYON RD

BUSINESSPARK AVE

SCRIPPS RANCH BLVD

WILLOW CREEK RD

OLD GROVE RD

TELEDYNE TECHNOLOGIES

DELTA GROUP ELECTRONICS

arrowhead pharmaceuticals

NSWC

INNO TECH

US MAIL

AVI

APRIA

DESIGNER MOLECULES INC.

SIEMENS

IRON MOUNTAIN

TEC

LOCKHEED MARTIN

LIFEWAVE

TechFlow

werfen

WD-40 COMPANY

LATITUDE

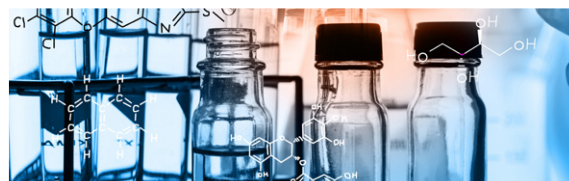
W

WILSON

TriMark



AMENITIES



1. EUCALYPTUS SQUARE

- » Chez Nouz
- » Todo Sushi
- » Subway
- » Carl's Jr
- » Green Burrito

2. SCRIPPS RANCH VILLAGE SHOPPING CENTER

- » Starbucks
- » Vons
- » Postel Annex
- » Wells Fargo
- » Chase
- » Consuelos Mexican
- » Z Pizza
- » Little Italy Bar & Grill
- » US Bank

3. SCRIPPS RETAIL PLAZA

- » Trader Joe's
- » Board & Brew
- » Bruski Burgers & Beer
- » Family Dentistry
- » Super Cuts
- » Himalayan Restaurant
- » Kappa Sushi
- » Gyu-Kaku Japanese BBQ

4. MIRA MESA MARKET CENTER

- » On the Border
- » Buca di Beppo
- » Panera Bread
- » Islands
- » Rubio's
- » Pick up Stix
- » Jamba Juice

- » Coldstone
- » Starbucks
- » Daphne's Greek Cafe
- » O's American Cafe
- » Barnes & Noble
- » Old Navy
- » ULTA
- » Edwards IMAX
- » FedEx Office
- » CVS
- » Mimi's Cafe
- » BBVA Compass
- » Jersey Mike's
- » Home Depot

5. MIRA MESA SHOPPING CENTER

- » Subway
- » Shell
- » In N Out
- » Kabab Shop
- » US Bank

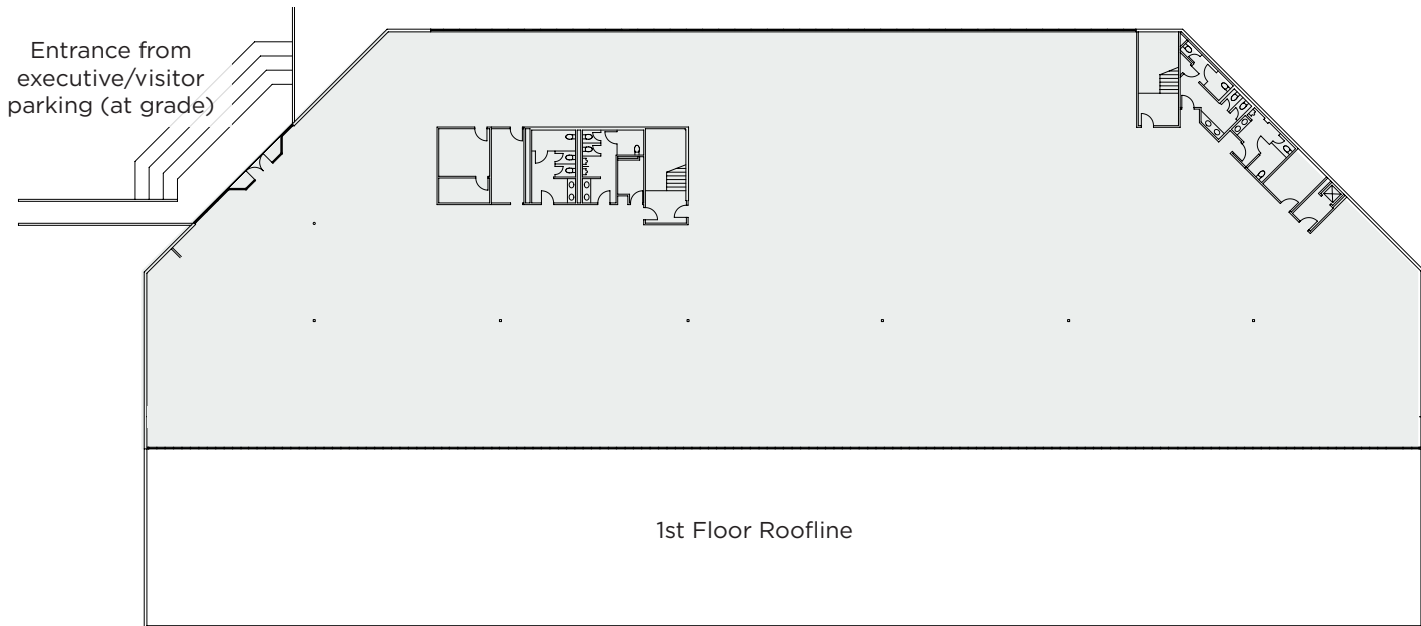
6. THE HUB AT SCRIPPS RANCH

- » Pacific Dental Services
- » Starbucks
- » Big Cheech's Chicken N' Waffles

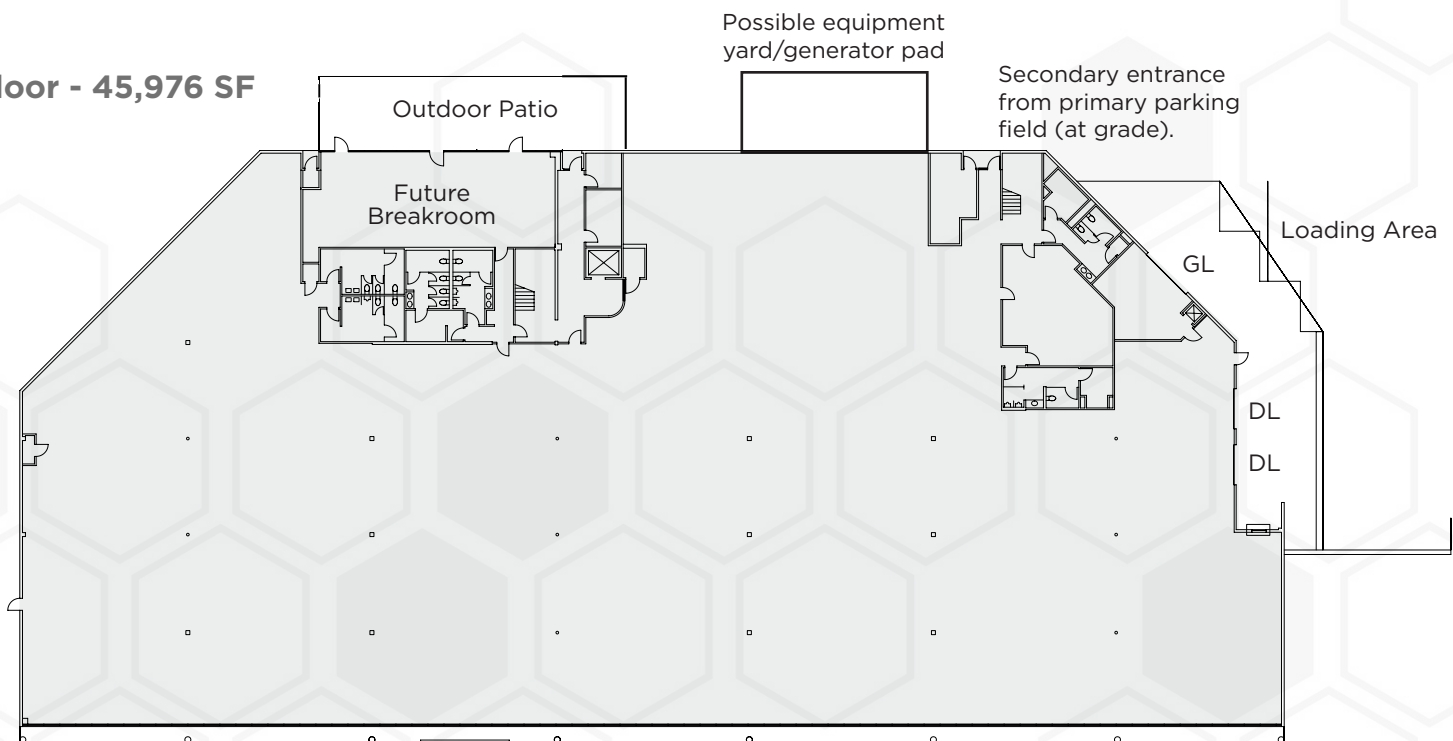
AS BUILT FLOOR PLANS



2nd Floor - 29,143 SF



1st Floor - 45,976 SF



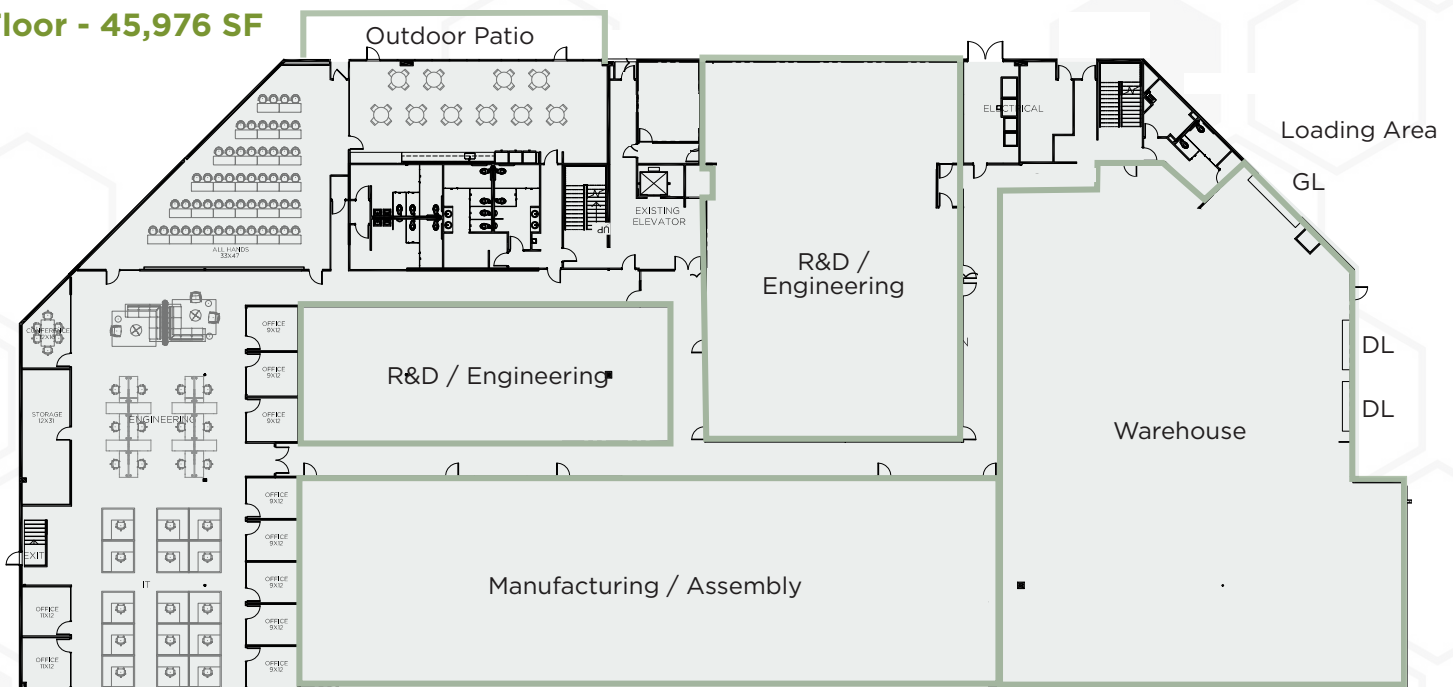
MANUFACTURING FLOOR PLANS



2nd Floor - 29,143 SF



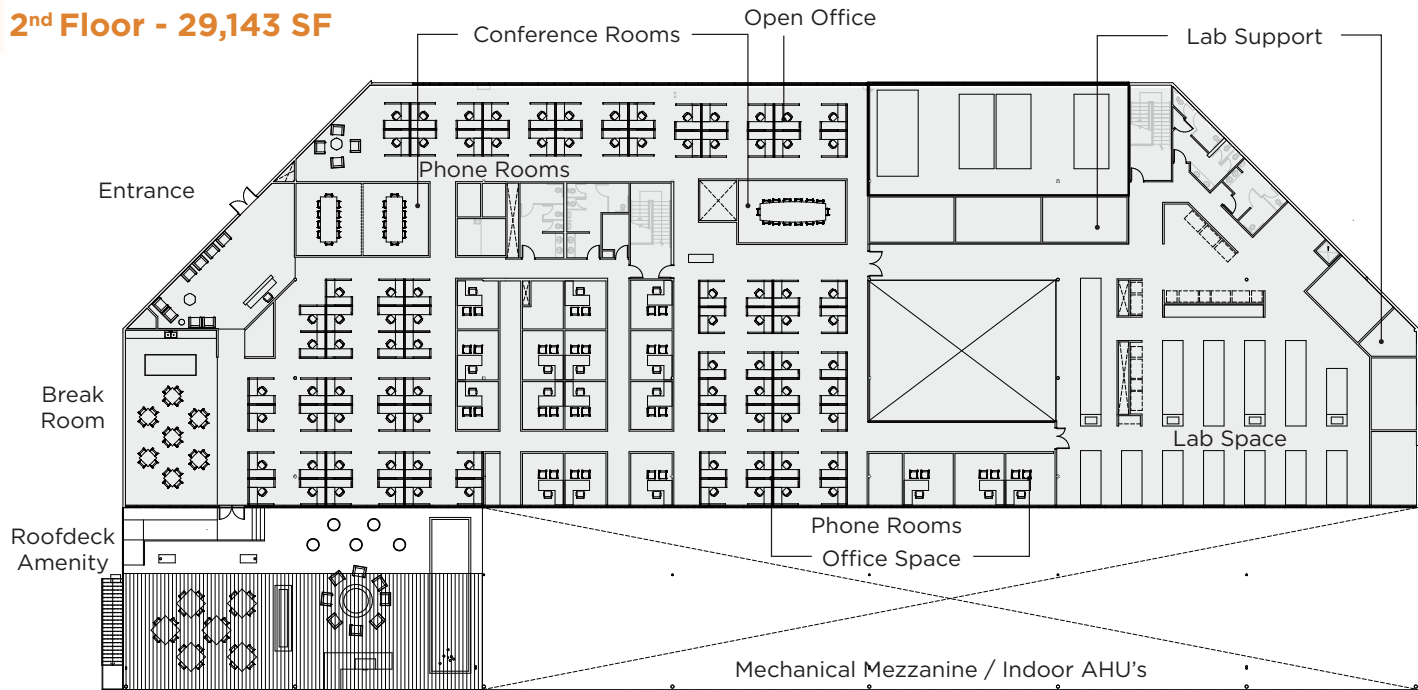
1st Floor - 45,976 SF



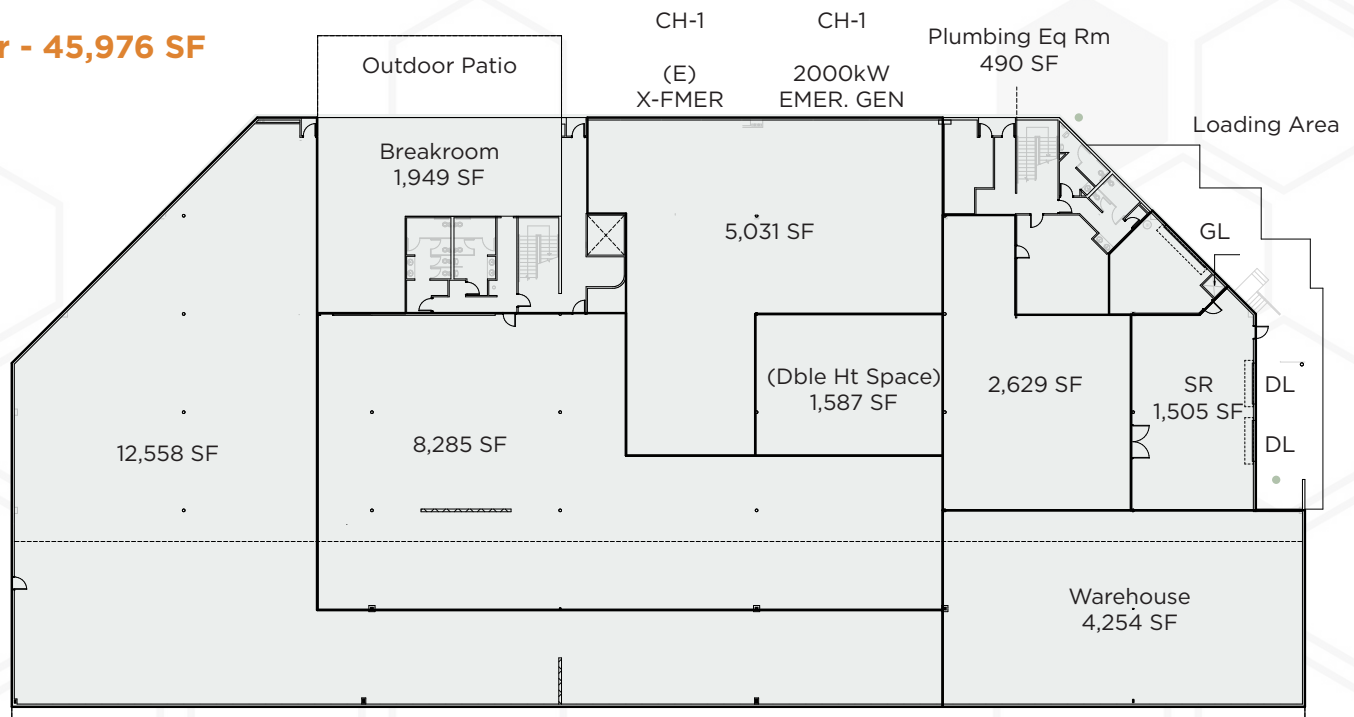
CONCEPTUAL cGMP FLOOR PLANS



2nd Floor - 29,143 SF



1st Floor - 45,976 SF



Conceptual plans for potential cGMP use developed by FPBA. Note that the building's current state is demolished shell condition.

PROPERTY PHOTOS



10225

WILLOW CREEK

BRANT ABERG, SIOR

Vice Chairman

858.546.5464

brant.aberg@cushwake.com

CA Lic #01773573

BRYCE ABERG

Vice Chairman

858.546.5462

bryce.aberg@cushwake.com

CA Lic #01313484



©2025 Cushman & Wakefield. All rights reserved. The information contained in this communication is strictly confidential. This information has been obtained from sources believed to be reliable but has not been verified. NO WARRANTY OR REPRESENTATION, EXPRESS OR IMPLIED, IS MADE AS TO THE CONDITION OF THE PROPERTY (OR PROPERTIES) REFERENCED HEREIN OR AS TO THE ACCURACY OR COMPLETENESS OF THE INFORMATION CONTAINED HEREIN, AND SAME IS SUBMITTED SUBJECT TO ERRORS, OMISSIONS, CHANGE OF PRICE, RENTAL OR OTHER CONDITIONS, WITHDRAWAL WITHOUT NOTICE, AND TO ANY SPECIAL LISTING CONDITIONS IMPOSED BY THE PROPERTY OWNER(S). ANY PROJECTIONS, OPINIONS OR ESTIMATES ARE SUBJECT TO UNCERTAINTY AND DO NOT SIGNIFY CURRENT OR FUTURE PROPERTY PERFORMANCE.