

**36,846 SF AVAILABLE FOR LEASE**

**CLASS A DOCK HIGH WAREHOUSE DISTRIBUTION FACILITY**

20910 S Normandie Ave, Unit C/D | Unincorporated LA County (Torrance P.O.), CA

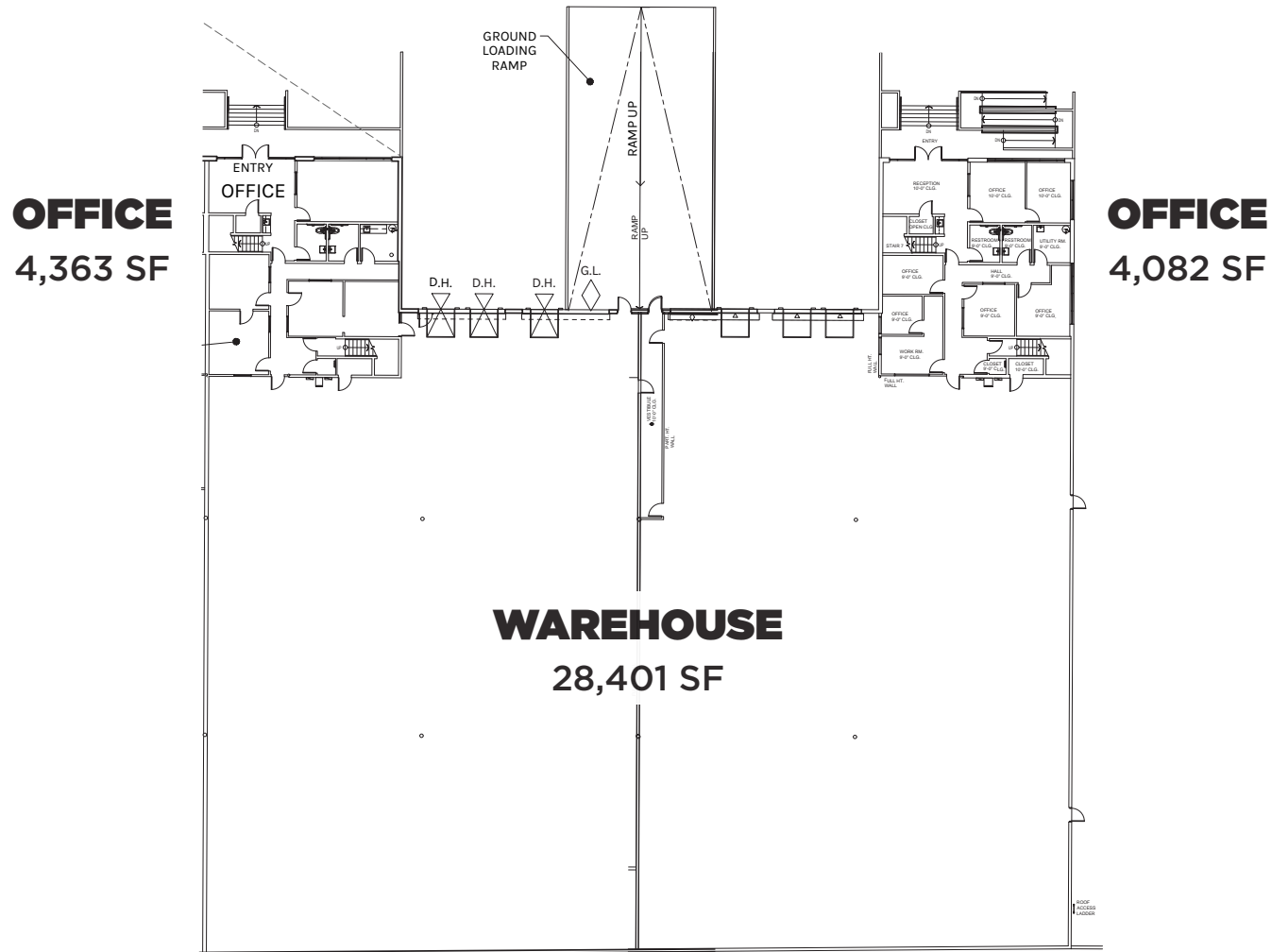


**NEWMARK**



### **WAREHOUSE DISTRIBUTION FACILITY**

- 36,846 SF Dock High Industrial Unit
- Multiple Two-Story Office Pods  
4,363 SF & 4,082 SF (8,445 SF Total)
- 6 Dock High Positions  
2 Ground Level Via Ramps
- 28' Clearance
- .60/3000 Sprinklers
- 400 Amps Power
- Excellent Access to (405) & (110) Freeways
- Strategically Located Between LAX and Ports of LA/Long Beach



**WAREHOUSE**  
28,401 SF

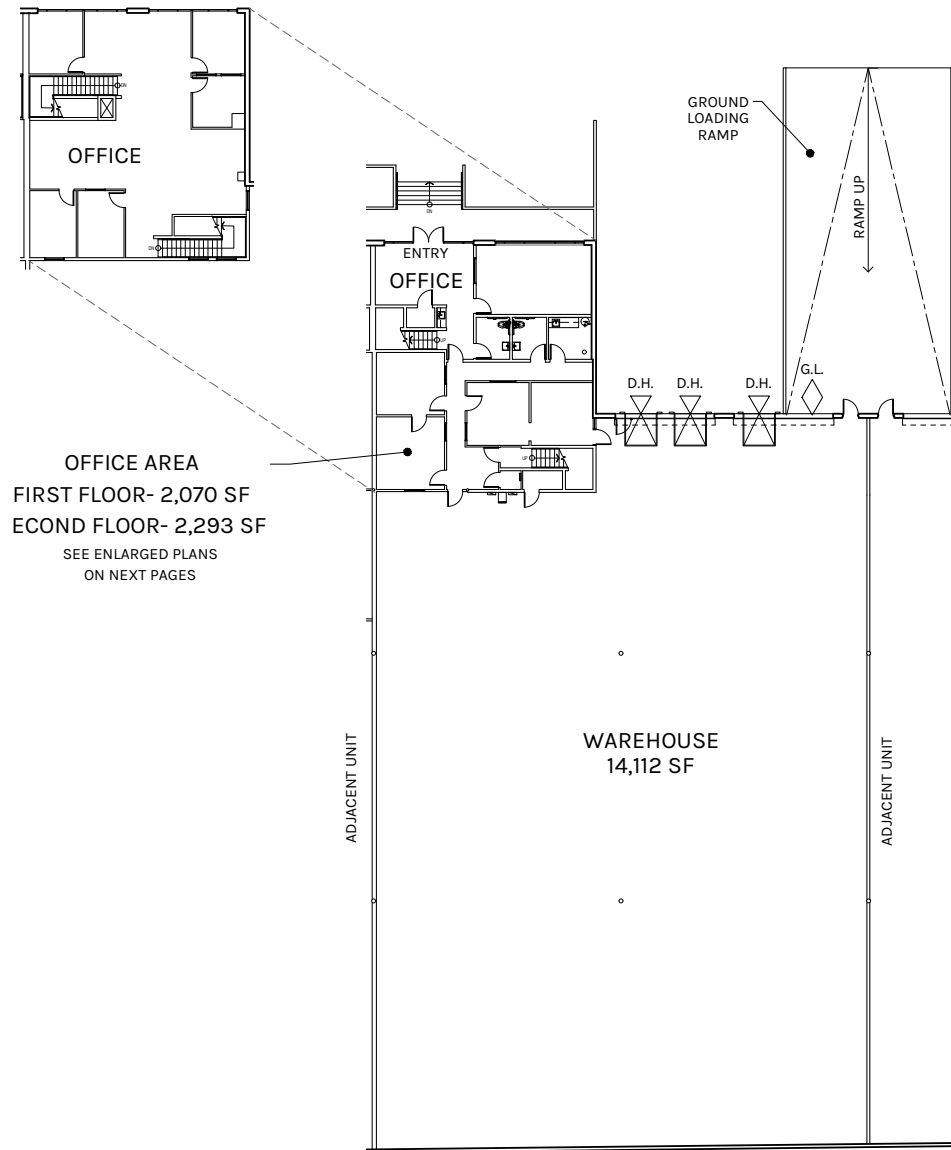
**OFFICE**  
8,445 SF

**TOTAL**  
36,846 SF

PLAN LAYOUT SUBJECT TO FIELD CONDITIONS AND MAY DIFFER FROM PLAN AS SHOWN. ALL INFORMATION PRESENTED ON THIS DRAWING IS PRESUMED TO BE ACCURATE, HOWEVER TENANT SHOULD VERIFY PERTINENT INFORMATION PRIOR TO COMMITTING TO A LEASE. ANY FURNITURE OR APPLIANCES SHOWN ON PLAN ARE FOR CONCEPT ONLY AND WILL BE TENANT PROVIDED.



# UNIT C



**WAREHOUSE**  
14,112 SF

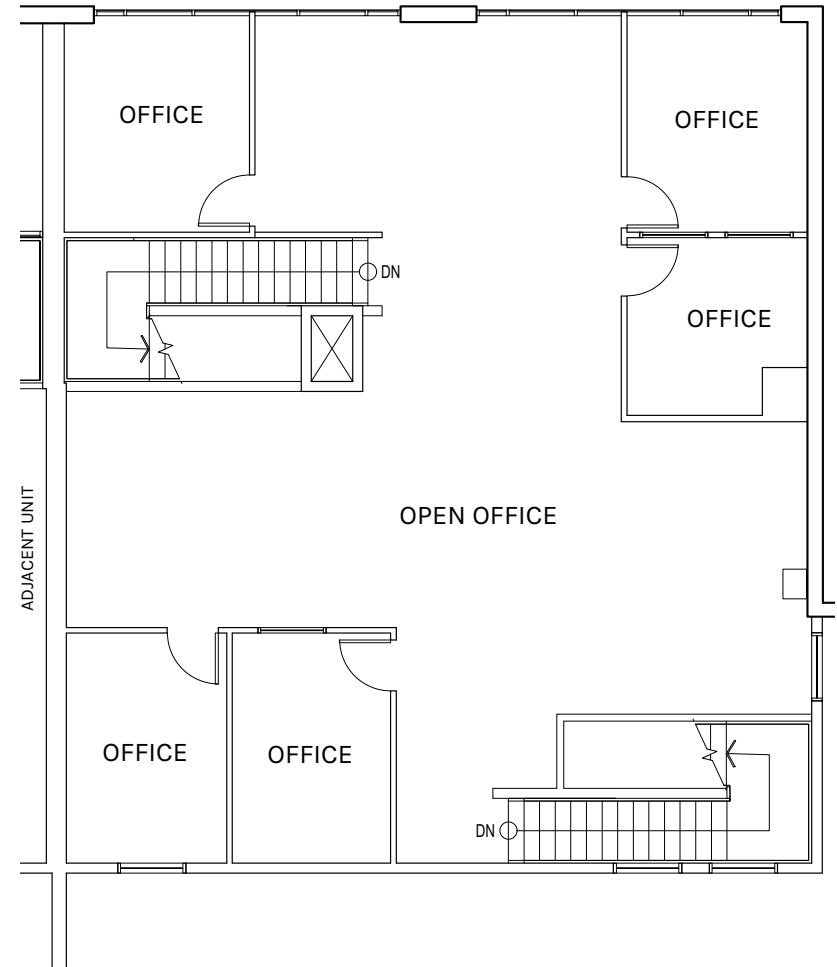
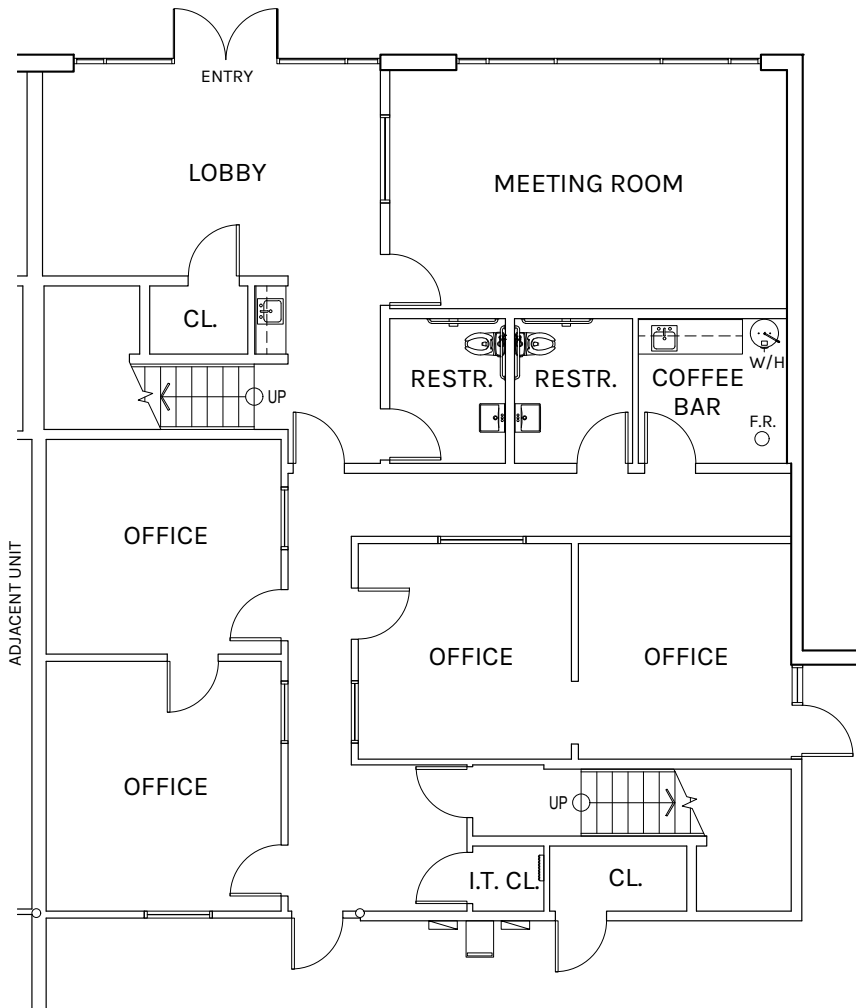
**OFFICE**  
4,363 SF

**TOTAL**  
18,475 SF

PLAN LAYOUT SUBJECT TO FIELD CONDITIONS AND MAY DIFFER FROM PLAN AS SHOWN. ALL INFORMATION PRESENTED ON THIS DRAWING IS PRESUMED TO BE ACCURATE, HOWEVER TENANT SHOULD VERIFY PERTINENT INFORMATION PRIOR TO COMMITTING TO A LEASE. ANY FURNITURE OR APPLIANCES SHOWN ON PLAN ARE FOR CONCEPT ONLY AND WILL BE TENANT PROVIDED.



# UNIT C



**GROUND FLOOR**  
2,070 SF

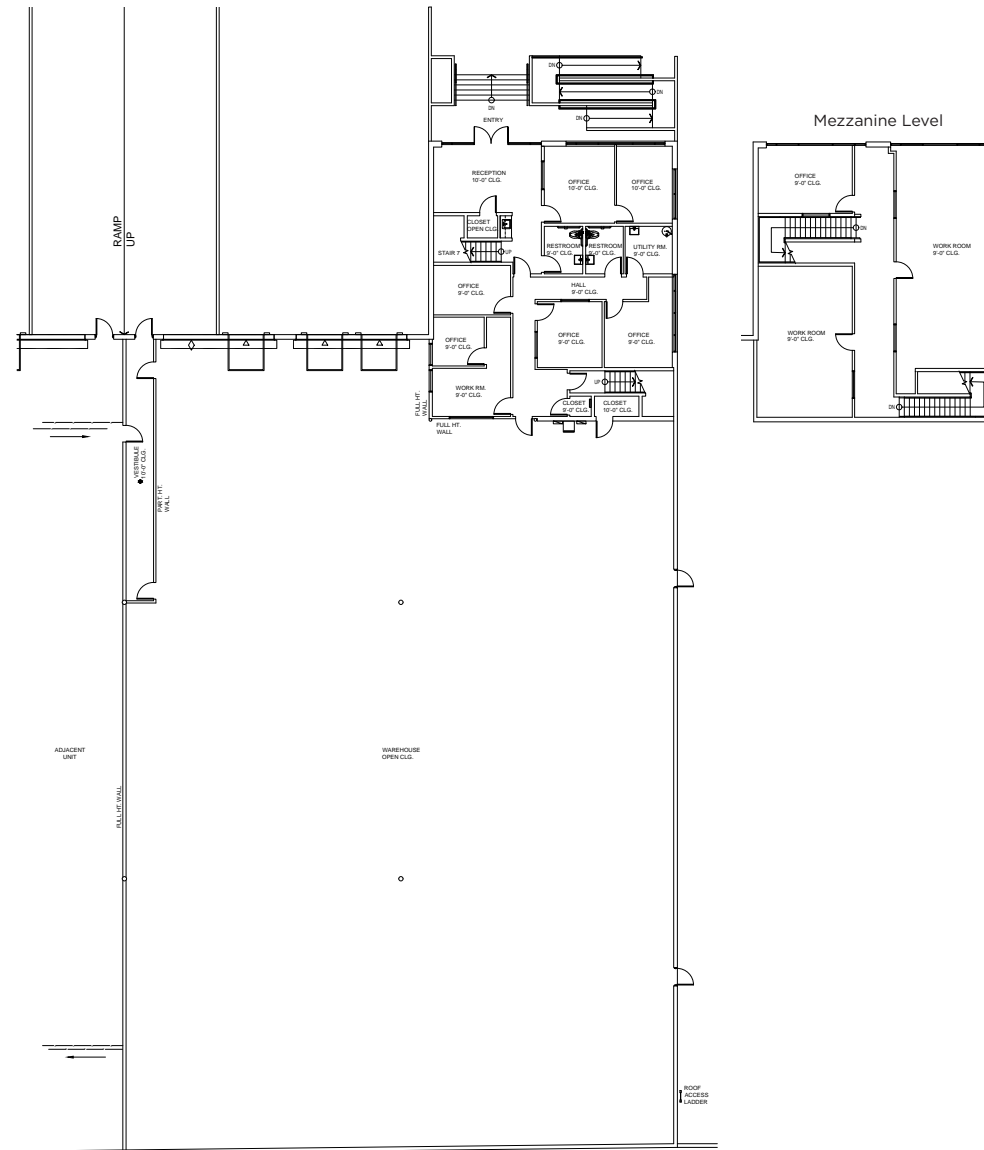
**MEZZANINE**  
2,293 SF

**TOTAL**  
4,363 SF

PLAN LAYOUT SUBJECT TO FIELD CONDITIONS AND MAY DIFFER FROM PLAN AS SHOWN. ALL INFORMATION PRESENTED ON THIS DRAWING IS PRESUMED TO BE ACCURATE, HOWEVER TENANT SHOULD VERIFY PERTINENT INFORMATION PRIOR TO COMMITTING TO A LEASE. ANY FURNITURE OR APPLIANCES SHOWN ON PLAN ARE FOR CONCEPT ONLY AND WILL BE TENANT PROVIDED.



# UNIT D



**WAREHOUSE**  
14,289 SF

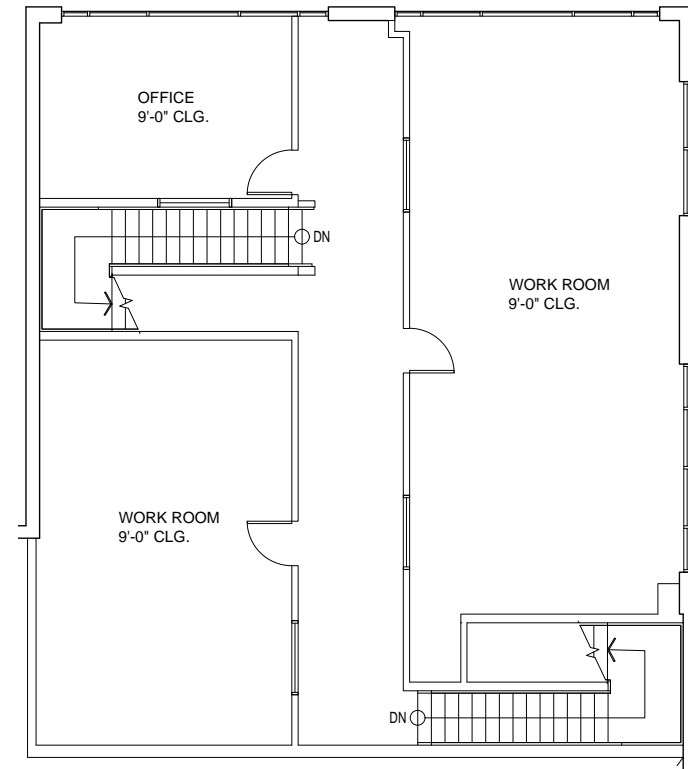
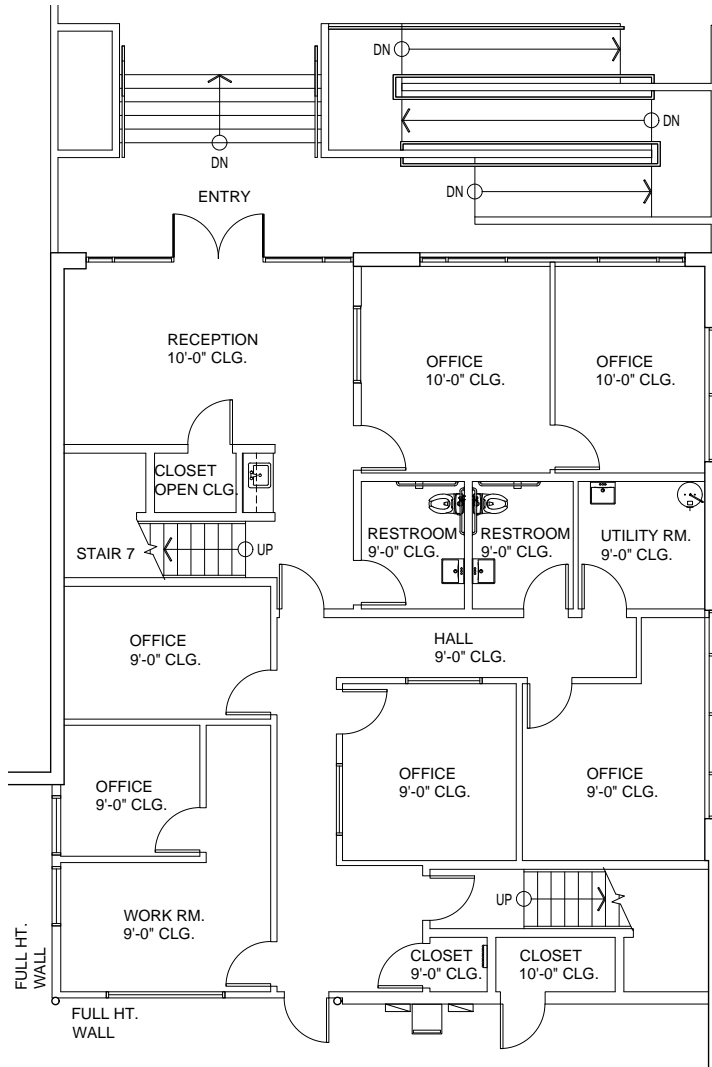
**OFFICE**  
4,082

**TOTAL**  
18,371 SF

PLAN LAYOUT SUBJECT TO FIELD CONDITIONS AND MAY DIFFER FROM PLAN AS SHOWN. ALL INFORMATION PRESENTED ON THIS DRAWING IS PRESUMED TO BE ACCURATE, HOWEVER TENANT SHOULD VERIFY PERTINENT INFORMATION PRIOR TO COMMITTING TO A LEASE. ANY FURNITURE OR APPLIANCES SHOWN ON PLAN ARE FOR CONCEPT ONLY AND WILL BE TENANT PROVIDED.



# UNIT D

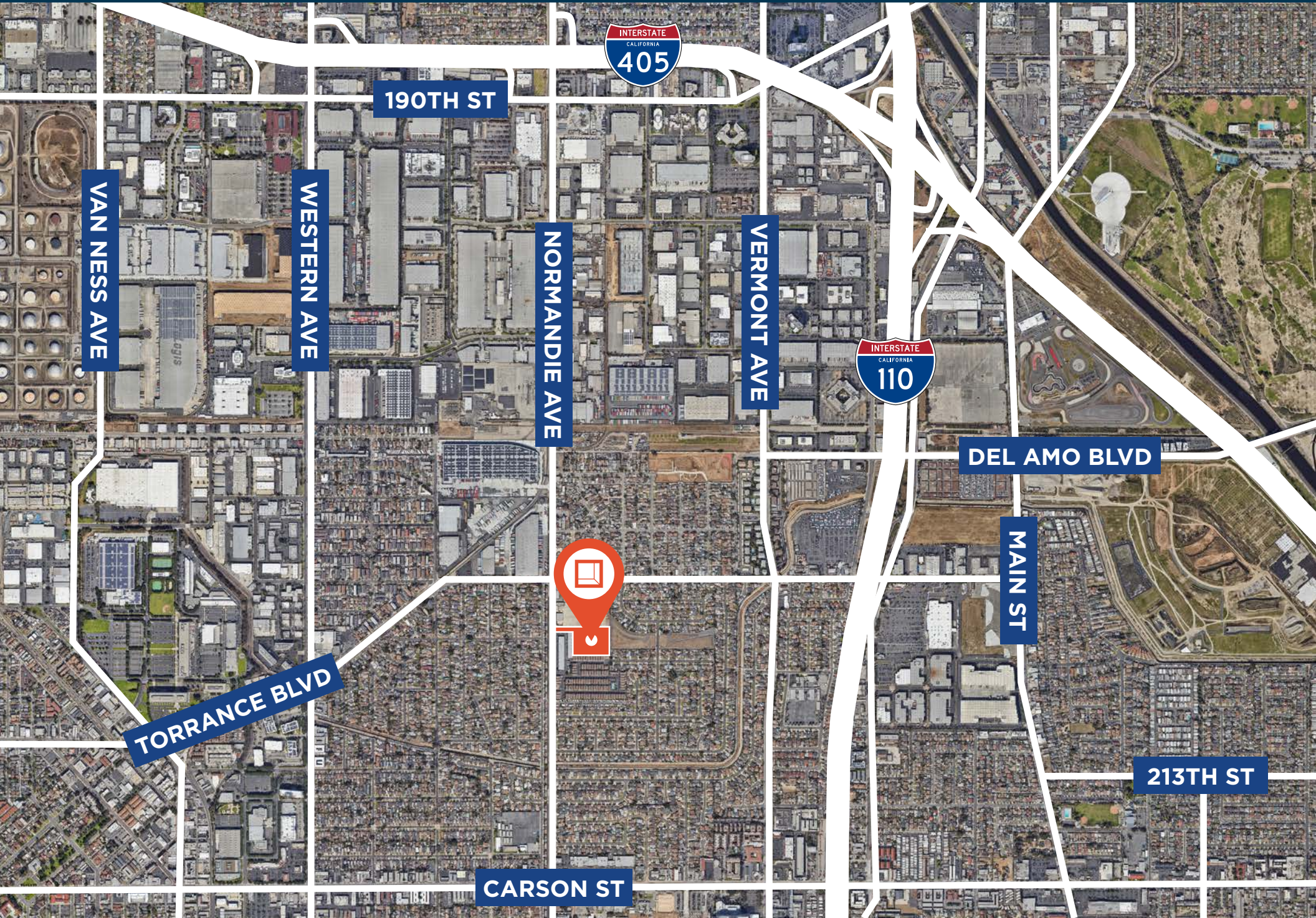


**GROUND FLOOR**  
2,102 SF

**MEZZANINE**  
1,980 SF

**TOTAL**  
4,082

PLAN LAYOUT SUBJECT TO FIELD CONDITIONS AND MAY DIFFER FROM PLAN AS SHOWN. ALL INFORMATION PRESENTED ON THIS DRAWING IS PRESUMED TO BE ACCURATE, HOWEVER TENANT SHOULD VERIFY PERTINENT INFORMATION PRIOR TO COMMITTING TO A LEASE. ANY FURNITURE OR APPLIANCES SHOWN ON PLAN ARE FOR CONCEPT ONLY AND WILL BE TENANT PROVIDED.



190TH ST

VAN NESS AVE

WESTERN AVE

NORMANDIE AVE

VERMONT AVE

DEL AMO BLVD

MAIN ST

TORRANCE BLVD

213TH ST

CARSON ST









**Rexford  
Industrial**

## Leasing Contacts

DANNY WILLIAMS  
Executive Managing Director  
t 310-491-2061  
danny.williams@nmrk.com  
CA RE Lic. #01776416

JOHN MCMILLAN  
Vice Chairman  
t 310-491-2048  
john.mcmillan@nmrk.com  
CA RE Lic. #01103292

BARRY HILL  
Executive Managing Director  
t 310-491-2026  
barry.hill@nmrk.com  
CA RE Lic. #01250531

DREW MURPHY  
Associate  
t 310-491-2027  
drew.murphy@nmrk.com  
CA RE Lic. #02087431

# NEWMARK

### Newmark

2301 Rosecrans Ave  
Suite 4100  
El Segundo, CA 90245

t 310-491-2000  
nmrk.com

Corporate License #01355491

The distributor of this communication is performing acts for which a real estate license is required. The information contained herein has been obtained from sources deemed reliable but has not been verified and no guarantee, warranty or representation, either express or implied, is made with respect to such information. Terms of sale or lease and availability are subject to change or withdrawal without notice.