

# 1055 NW Maple St Issaquah, WA

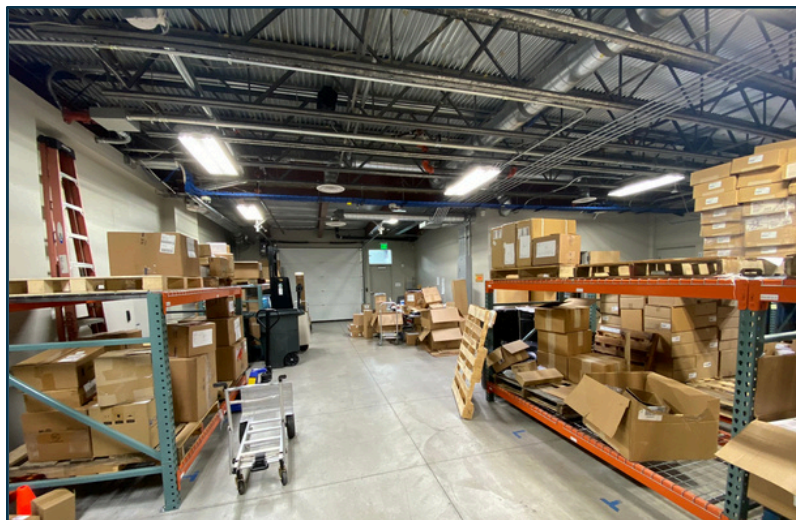
Office Space For Lease





# Highlights

- 17,679 SF Available across two floors, able to demise
- Standalone building on 1.5 acres
- 55 onsite parking stalls
- Class A office buildout/renovation completed in 2016 & 2022.
- Local ownership group
- Call for rates



**David Rothrock**

206-679-7316  
david@mwaseattle.com

**Matt Brennan**

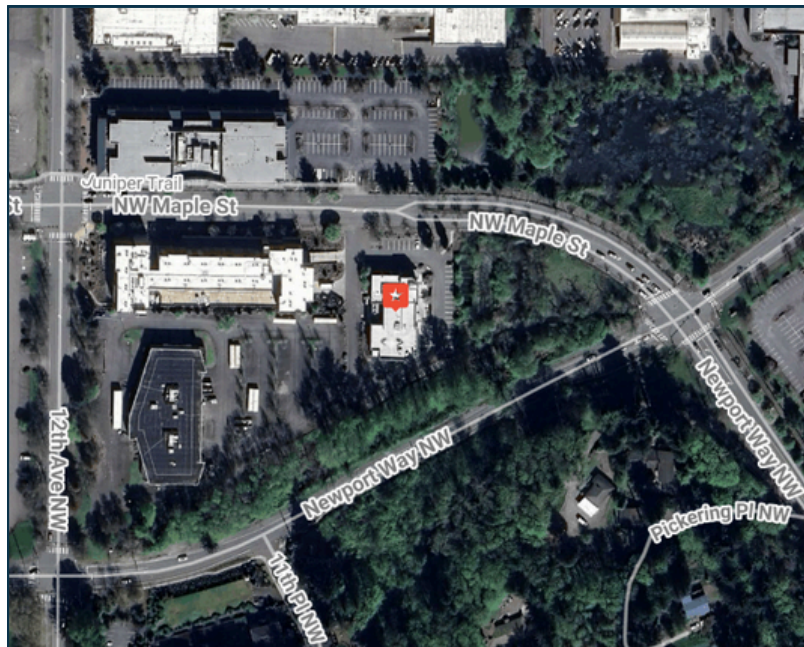
206-459-0782  
matt@mwaseattle.com





## Location

- Direct access to I-90 and close proximity to Downtown Issaquah
- Easy access to Seattle and Bellevue
- Numerous walkable retail, grocer, and restaurant amenities
- Near Costco's growing Issaquah HQ footprint, and several other large, Eastside corporate tenants



**David Rothrock**

206-679-7316  
david@mwaseattle.com

**Matt Brennan**

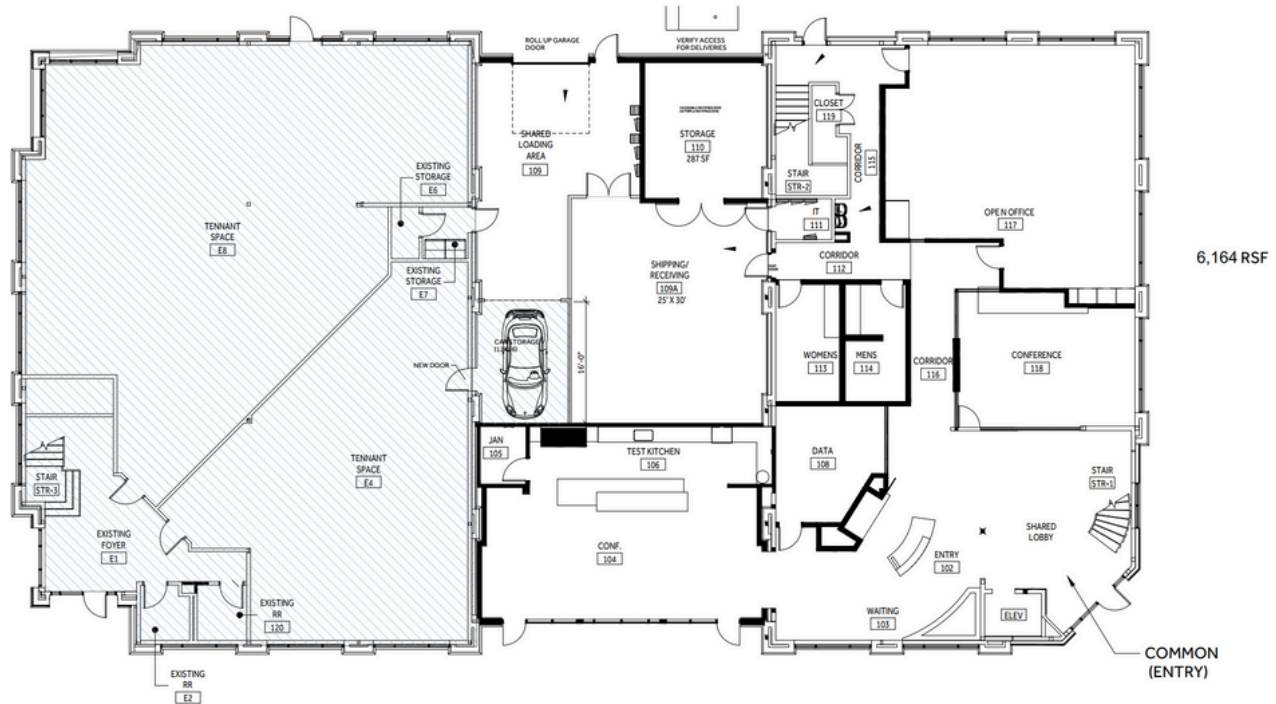
206-459-0782  
matt@mwaseattle.com



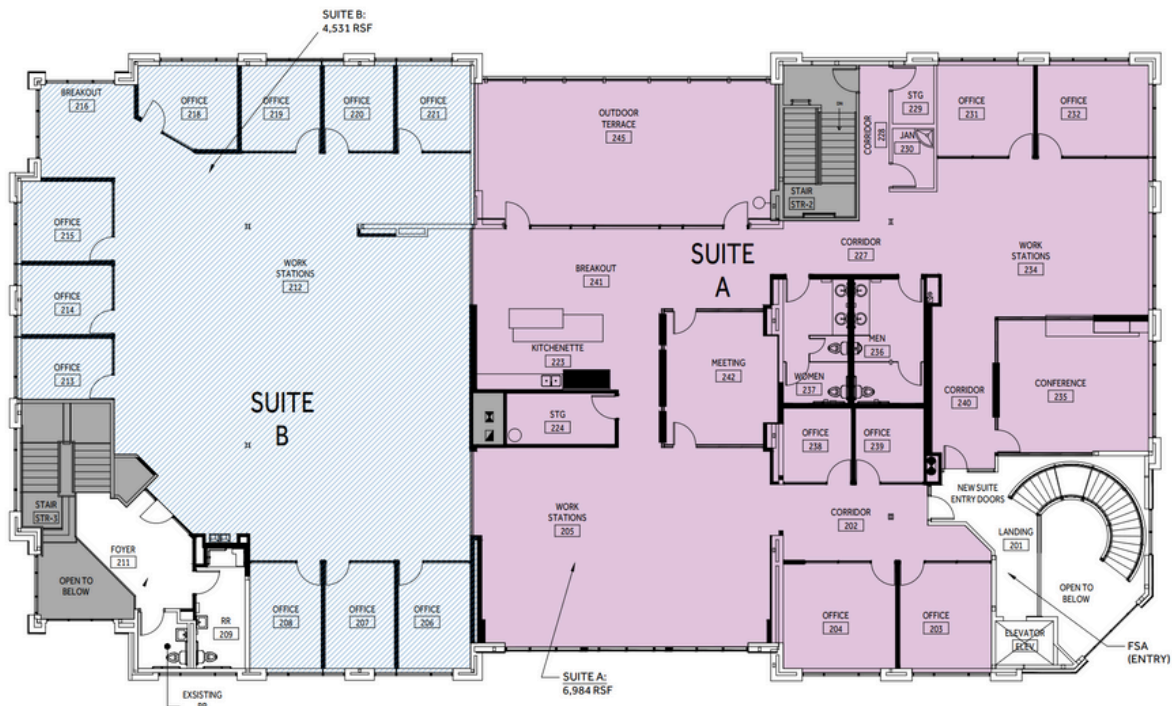


# Floorplans

## Floor 1 | 6,164 RSF Available



## Floor 2 | 11,515 RSF Available



Contact the undersigned for additional information and tour appointments

## David Rothrock

206-679-7316  
david@mwaseattle.com

## Matt Brennan

206-459-0782  
matt@mwaseattle.com

