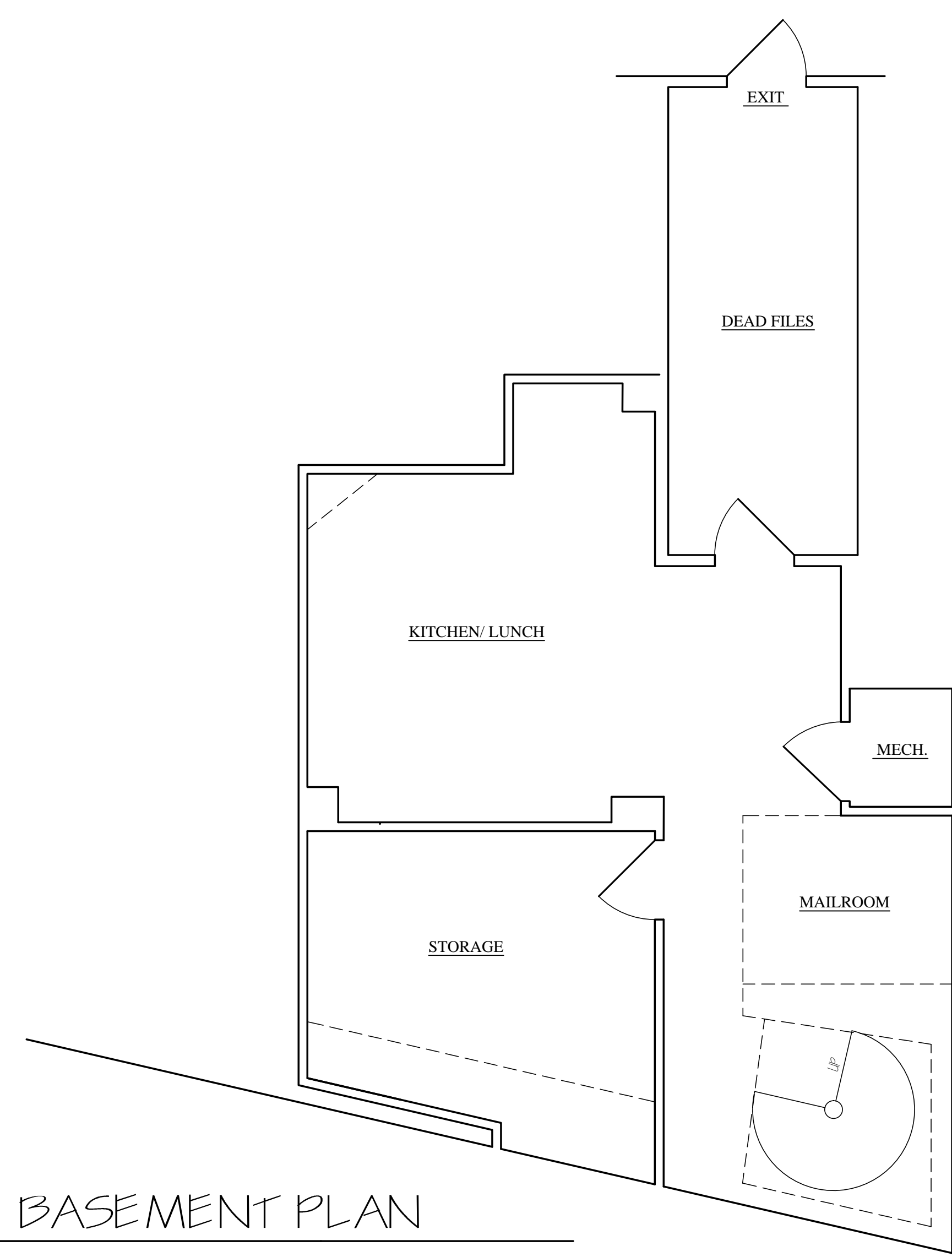


- DEMOLITION NOTES:
1. REMOVE ALL LAY-IN ACOUSTIC CEILING PANELS. PROTECT AND STORE ON SITE.
 2. NEW PARTITION LOCATIONS ARE FOR LAYOUT PURPOSES ONLY. DO NOT CONSTRUCT. FINAL PARTITION AND GLASS WALL DESIGNS TO BE DETERMINED.
 3. REMOVE AS MUCH BULK FROM OBSTRUCTIONS AS POSSIBLE. CONTACT ARCHITECT AFTER WALLS ARE OPENED-UP TO DETERMINE FINAL LAYOUT.

1 FIRST FLOOR PLAN

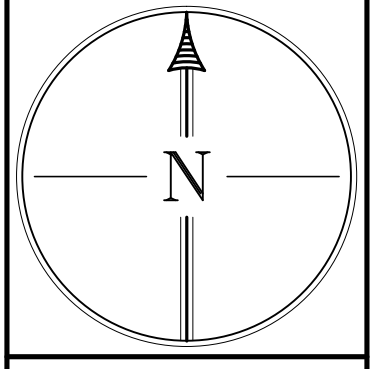
- REMOVE PARTITIONS
- ===== NEW PARTITIONS
- - - - - LINE OF CEILING SOFFITS



2 BASEMENT PLAN

- REMOVE PARTITIONS
- ===== NEW PARTITIONS
- - - - - LINE OF CEILING SOFFITS

Sheet Title



Job #
98039

Project
PHELAN INSURANCE
OFFICE RENOVATION
1812 MASSACHUSETTS AVE.,
CAMBRIDGE, MA

Scale
1/4" = 1'-0" U.N.O.

Date
16 MAY 2001

Revisions
24 MAY 2001
11 OCT 2001

Sheet

A1