

Guadalupe County

101 E Court St. Seguin, Texas 78155



Final Report - Approved

Application No. FA25-00320

Description :

Address :

Record Type :

Document Filename : American Legacy Farm FA-AsBuilt-Signed.pdf

Comment Author Contact Information:

Author Name	Author Email	Author Phone No.:
Wayne Lehman	wayne.lehman@co.guadalupe.tx.us	-

General Comments

Corrections in the following table need to be applied before a permit can be issued

AMERICAN LEGACY FARM

3405 FM 465
SEGUIN, TX. 78155

MURRAY FIRE ALARM & SECURITY, LLC

4627 N. STAHL PARK, STE. 101
SAN ANTONIO, TX. 78217
210-323-7073
ACR-2451226

SYSTEM DESIGNER:



21118 PACIFIC GROVE
SAN ANTONIO, TX 78259
ACR-2416677
210-960-2722 P
210-960-2722 F

INSTALLING CONTRACTOR:

MURRAY FIRE ALARM
& SECURITY, LLC

4627 N. STAHL PARK, STE. 101
SAN ANTONIO, TX. 78217
ACR-2451226
210-323-7073 PH

PROJECT TITLE:

AMERICAN
LEGACY FARM

3405 FM 465
SEGUIN, TX. 78155

APPROVED

Permit No. FA25-00320
Name:
Date: 08.12.2025
Approved By: Wayne Lehman

STAMP:

- FOR SUBMITTAL RECORD DRAWINGS
- I have reviewed these plans and
 certify that they comply with the applicable codes and standards;
Or
 certify they are copied sealed engineering plans and any violations of the applicable codes or standards are specifically noted on these plans.

Global Fire Protection Solutions, LLC
21115 Pacific Grove
San Antonio, Tx. 78259
ACR-2416677
Aaron M. Fitzgerald APS-1741359
Date: 08-01-2025

SUBMITTALS / REVISIONS:

NO.	DATE	DESCRIPTION
2025.08.01		AS-BUILTS

DATE: 05-29-2025
DRAWN BY: GFPS

SHEET TITLE:

GENERAL NOTES
SYMBOL LEGEND
SYSTEM MATRIX
EQUIPMENT LIST

FIRE ALARM PLANS

SHEET NUMBER:

FA1.0

PROJECT INFORMATION

SCOPE OF WORK:
INSTALL A FIRE ALARM SYSTEM FOR THE SHELL WAREHOUSE SPACE
OCCUPANCY CLASSIFICATION: 'B' BUSINESS, 'S' STORAGE
CONSTRUCTION TYPE: IIB
SQUARE FOOTAGE: 25,692

AUDIBILITY LEVEL LISTING PER 2016 NFPA 72

OCCUPANCY TYPE	AVERAGE (dBA)	MINIMUM REQUIRED (dBA)
① BUSINESS OCCUPANCIES	55	70
② STORAGE OCCUPANCIES	30	45

NOTES:
1. THE AVERAGE AMBIENT SOUND LEVEL (dBA) IS PER 2016 NFPA 72, TABLE A.18.4.3.
2. THE AUDIBLE ALARM NOTIFICATION APPLIANCES SHALL PROVIDE A SOUND PRESSURE LEVEL OF 15 DECIBELS (dBA) ABOVE THE AVERAGE AMBIENT SOUND LEVEL OR 5 dBA ABOVE THE MAXIMUM SOUND LEVEL HAVING A DURATION OF NOT LESS THAN 60 SECONDS, WHICHEVER IS GREATER, IN EVERY OCCUPIABLE SPACE WITHIN THE BUILDING. 2016 IFC, 907.5.2.1.1
3. ALL DEVICES INSTALLED AT MEDIUM SETTING WITH 86dBA MEASURED AT 10' UNLESS OTHERWISE NOTED.

DRAWING INDEX

SHEET #	DRAWING DESCRIPTION
FA1.0	COVER SHEET, LEGEND, GENERAL NOTES, EQUIPMENT LIST
FA1.1	FIRE ALARM PLAN - FIRST FLOOR & RISER DIAGRAM
FA2.0	INITIATING & NOTIFICATION WIRING DETAILS

APPLICABLE CODES

ALL WORK WILL BE INSTALLED IN ACCORDANCE WITH ALL APPLICABLE CODES AND REFERENCED DESIGN STANDARDS

INTERNATIONAL BUILDING CODE (IBC)	2018
INTERNATIONAL FIRE CODE (IFC)	2018
INTERNATIONAL MECHANICAL CODE (IMC)	2018
NFPA 72, NATIONAL FIRE ALARM AND SIGNALING CODE	2016

FIRE ALARM EQUIPMENT SCHEDULE

MFG.	MODEL #	DESCRIPTION	QTY.
POTTER	AFC-50	ADDRESSABLE FIRE ALARM CONTROL PANEL	1
POTTER	UD-2000	DIGITAL ALARM COMMUNICATOR	1
POWER SONIC	PS-1270	12V 7AH BATTERY	2
SPACE AGE	SSU00672	FIRE ALARM DOCUMENT CABINET	1
POTTER	PAD100-PSDA	ADDRESSABLE DUAL-ACTION MANUAL PULL STATION	1
POTTER	PAD300-PD	ADDRESSABLE PHOTOELECTRIC SMOKE DETECTOR	28
POTTER	PAD100-SIM	ADDRESSABLE SINGLE INPUT MODULE	2
DITEK	DTK-120HW	120V AC SURGE SUPPRESSOR	1
SYSTEM SENSOR	PC2WL	CEILING MOUNTED MULTICANDELA HORN/STROBE, WHITE	13
SYSTEM SENSOR	SCWL	CEILING MOUNTED MULTICANDELA STROBE, WHITE	2
SYSTEM SENSOR	SSM24-8A	WALL MOUNTED 8" BELL	1

GENERAL NOTES

- ALL SMOKE DETECTORS & HEAT DETECTORS SHALL BE LOCATED ON THE CEILING NOT LESS THAN 4" FROM A SIDE WALL TO THE NEAREST EDGE OF THE SMOKE DETECTOR OR IF MOUNTED ON THE SIDEWALL BETWEEN 4" AND 12" DOWN FROM THE CEILING TO THE TOP OF THE SMOKE DETECTOR. (2016 NFPA72 17.6.3.1.3.1)
- SMOKE DETECTORS SHALL NOT BE INSTALLED ANY CLOSER THAN 3'-0" FROM AIR SUPPLY REGISTERS, LIGHT FIXTURES, OR CEILING FAN BLADE TIPS.
- DUCT SMOKE DETECTORS SHALL BE INSTALLED ON THE RETURN SIDE OF AHU'S AND/OR RTU'S THAT EXCEED 2,000CFM OR 5TONS. DUCT SMOKE DETECTORS SHALL BE INSTALLED ON THE SUPPLY AND RETURN SIDES OF ANY UNIT THAT EXCEEDS 15,000CFM OR 38TONS. DUCT SMOKE DETECTORS SHALL SHUT DOWN ITS RESPECTIVE FAN UNLESS SPECIFIED OTHERWISE.
- A MANUAL PULL STATION SHALL BE INSTALLED ON ALL FIRE ALARM SYSTEMS. MANUAL PULL STATIONS SHALL BE MOUNTED SO THAT THE OPERABLE PART OF A MANUALLY ACTUATED ALARM-INITIATING DEVICE SHALL BE NOT LESS THAN 42 IN. AND NOT MORE THAN 48 IN. FROM THE FINISHED FLOOR. MANUAL PULL STATIONS SHALL BE UNOBSTRUCTED AND READILY ACCESSIBLE. THEY SHALL BE LOCATED IN THE NORMAL PATH OF EXIT FROM THE AREA WITH A MANUAL PULL STATION ON EACH FLOOR. THE TRAVEL DISTANCE BETWEEN MANUAL PULL STATIONS SHALL NOT EXCEED 200'.
- AUDIO/VISUAL AND VISUAL APPLIANCES SHALL BE WALL MOUNTED AT SUCH THAT THE ENTIRE LENS IS NOT LESS THAN 80" AND NOT MORE THAN 96" ABOVE THE FINISHED FLOOR. (2016 NFPA72 18.5.5.1)
- CONNECTION TO THE LIGHT AND POWER SERVICE SHALL BE ON A DEDICATED BRANCH CIRCUIT. THE CIRCUITS AND CONNECTIONS SHALL BE MECHANICALLY PROTECTED. CIRCUIT DISCONNECTING MEANS SHALL HAVE A RED MARKING, BE ACCESSIBLE ONLY TO AUTHORIZED PERSONNEL, AND BE IDENTIFIED AS "FIRE ALARM CIRCUIT CONTROL". THE LOCATION OF THE CIRCUIT DISCONNECTING MEANS SHALL BE PERMANENTLY IDENTIFIED AT THE FIRE ALARM CONTROL UNIT. (2016 NFPA72 10.6.5)
- ALL WIRING SHALL BE IN ACCORDANCE WITH NFPA 70, ARTICLE 760.
- ALL CEILING HEIGHTS ARE 10'-0" UNLESS OTHERWISE NOTED AND THE CEILING IS CONSTRUCTED OF SUSPENDED LAY-IN CEILING.
- WITH EVERY NEW SYSTEM, A DOCUMENTATION CABINET SHALL BE INSTALLED AT THE SYSTEM CONTROL UNIT OR AT ANOTHER APPROVED LOCATION AT THE PROTECTED PREMISES. (2016 NFPA72 7.7.2.1)

FIRE SYMBOL LEGEND

FACP FIRE ALARM CONTROL PANEL	SD DUCT SMOKE DETECTOR
NACF FIRE CONTROL POWER SUPPLY	SD SMOKE DETECTOR
VEP VOICE EVACUATION PANEL	WS WATERFLOW SWITCH
FFCP FIRE FIGHTER CONTROL PANEL	TS TAMPER SWITCH
DOC DOCUMENT CABINET	PWB PRE-WIRE BOX
FAA ANNUNCIATOR	STW STROBE (WALL MTD.)
SS SURGE SUPPRESSOR	AS HORN/STROBE (WALL MTD.)
FSD FIRE SMOKE DAMPER	STC STROBE (CLG. MTD.)
RM10 10 INPUT MONITOR MODULE	AS HORN/STROBE (CLG. MTD.)
F MANUAL PULL STATION	SS SPEAKER/STROBE (WALL MTD.)
M MONITOR MODULE	SS SPEAKER/STROBE (CLG. MTD.)
MM MINI MONITOR MODULE	H HORN (WALL MTD.)
DM DUAL MONITOR MODULE	H HORN (CLG. MTD.)
RM RELAY MODULE	S SPEAKER
CM CONTROL MODULE	15cd DESIGNATED CADELA RATING OF DEVICE
MR MR-101 RELAY MODULE	S1-1 DESIGNATED CIRCUIT NUMBER & DEVICE NUMBER
DH DOOR HOLDER	~ END OF LINE RESISTOR, ONE PER CIRCUIT
KH KITCHEN HOOD	W WEATHERPROOF
CD CARBON MONOXIDE DETECTOR	L LOW FREQUENCY
HD HEAT DETECTOR	

FIRE CABLE LEGEND

	14 GA. 2 CON, NON-SHEILDED, FPLP, NAC
	14 GA. 2 CON, NON-SHEILDED, FPLP, NAC PRE-WIRE
	16 GA. 2 CON, NON-SHEILDED, FPLP, SLC
	18 GA. 4 CON, NON-SHEILDED, FPLP, ANN
	16 GA. 2 CON, SHEILDED, FPLP, SPKR
	EMT CONDUIT FOR NOTIFICATION CIRCUITS, 3/4" MIN.
	EMT CONDUIT FOR INITIATING CIRCUITS, 3/4" MIN.

NOT ALL SYMBOLS AND CABLES MAY BE USED

SYSTEM OUTPUTS

SYSTEM INPUTS	PANEL ANNUNCIATION	NOTIFICATION	REQUIRED FIRE SAFETY CONTROLS
MANUAL PULL STATIONS	ACTIVATE COMMON ALARM SIGNAL INDICATOR	ACTIVATE COMMON SUPERVISORY SIGNAL	ACTIVATE COMMON SUPERVISORY SIGNAL
1ST FLOOR SMOKE DETECTORS	ACTIVATE COMMON SUPERVISORY SIGNAL	ACTIVATE COMMON SUPERVISORY SIGNAL	ACTIVATE COMMON SUPERVISORY SIGNAL
2ND FLOOR SMOKE DETECTORS	ACTIVATE COMMON SUPERVISORY SIGNAL	ACTIVATE COMMON SUPERVISORY SIGNAL	ACTIVATE COMMON SUPERVISORY SIGNAL
3RD FLOOR SMOKE DETECTORS	ACTIVATE COMMON SUPERVISORY SIGNAL	ACTIVATE COMMON SUPERVISORY SIGNAL	ACTIVATE COMMON SUPERVISORY SIGNAL
CARBON MONOXIDE(CO) DETECTORS	ACTIVATE COMMON SUPERVISORY SIGNAL	ACTIVATE COMMON SUPERVISORY SIGNAL	ACTIVATE COMMON SUPERVISORY SIGNAL
HEAT DETECTORS	ACTIVATE COMMON SUPERVISORY SIGNAL	ACTIVATE COMMON SUPERVISORY SIGNAL	ACTIVATE COMMON SUPERVISORY SIGNAL
DUCT SMOKE DETECTORS	ACTIVATE COMMON SUPERVISORY SIGNAL	ACTIVATE COMMON SUPERVISORY SIGNAL	ACTIVATE COMMON SUPERVISORY SIGNAL
1ST FLOOR ELEVATOR LOBBY SMOKE DETECTOR	ACTIVATE COMMON SUPERVISORY SIGNAL	ACTIVATE COMMON SUPERVISORY SIGNAL	ACTIVATE COMMON SUPERVISORY SIGNAL
2ND FLOOR ELEVATOR LOBBY SMOKE DETECTOR	ACTIVATE COMMON SUPERVISORY SIGNAL	ACTIVATE COMMON SUPERVISORY SIGNAL	ACTIVATE COMMON SUPERVISORY SIGNAL
3RD FLOOR ELEVATOR LOBBY SMOKE DETECTOR	ACTIVATE COMMON SUPERVISORY SIGNAL	ACTIVATE COMMON SUPERVISORY SIGNAL	ACTIVATE COMMON SUPERVISORY SIGNAL
ELEVATOR EQUIPMENT ROOM SMOKE DETECTOR	ACTIVATE COMMON SUPERVISORY SIGNAL	ACTIVATE COMMON SUPERVISORY SIGNAL	ACTIVATE COMMON SUPERVISORY SIGNAL
ELEVATOR EQUIPMENT ROOM HEAT DETECTOR	ACTIVATE COMMON SUPERVISORY SIGNAL	ACTIVATE COMMON SUPERVISORY SIGNAL	ACTIVATE COMMON SUPERVISORY SIGNAL
ELEVATOR SHAFT SMOKE DETECTOR	ACTIVATE COMMON SUPERVISORY SIGNAL	ACTIVATE COMMON SUPERVISORY SIGNAL	ACTIVATE COMMON SUPERVISORY SIGNAL
ELEVATOR SHAFT HEAT DETECTOR	ACTIVATE COMMON SUPERVISORY SIGNAL	ACTIVATE COMMON SUPERVISORY SIGNAL	ACTIVATE COMMON SUPERVISORY SIGNAL
SPRINKLER WATERFLOW SWITCH	ACTIVATE COMMON SUPERVISORY SIGNAL	ACTIVATE COMMON SUPERVISORY SIGNAL	ACTIVATE COMMON SUPERVISORY SIGNAL
SPRINKLER TAMPER SWITCH	ACTIVATE COMMON SUPERVISORY SIGNAL	ACTIVATE COMMON SUPERVISORY SIGNAL	ACTIVATE COMMON SUPERVISORY SIGNAL
SPRINKLER PRESSURE SWITCH	ACTIVATE COMMON SUPERVISORY SIGNAL	ACTIVATE COMMON SUPERVISORY SIGNAL	ACTIVATE COMMON SUPERVISORY SIGNAL
AC POWER FAIL	ACTIVATE COMMON SUPERVISORY SIGNAL	ACTIVATE COMMON SUPERVISORY SIGNAL	ACTIVATE COMMON SUPERVISORY SIGNAL
LOW BATTERY	ACTIVATE COMMON SUPERVISORY SIGNAL	ACTIVATE COMMON SUPERVISORY SIGNAL	ACTIVATE COMMON SUPERVISORY SIGNAL
OPEN CIRCUIT	ACTIVATE COMMON SUPERVISORY SIGNAL	ACTIVATE COMMON SUPERVISORY SIGNAL	ACTIVATE COMMON SUPERVISORY SIGNAL
SHORT CIRCUIT	ACTIVATE COMMON SUPERVISORY SIGNAL	ACTIVATE COMMON SUPERVISORY SIGNAL	ACTIVATE COMMON SUPERVISORY SIGNAL

SYSTEM OPERATING MATRIX

SYSTEM DESIGNER:



21115 PACIFIC GROVE
SAN ANTONIO, TX 78259
ACR-2416677
210-960-2722 P
210-940-2722 F

INSTALLING CONTRACTOR:

MURRAY FIRE ALARM
& SECURITY, LLC

4627 N. STAHL PARL, STE. 101
SAN ANTONIO, TX. 78217
ACR-2451226
210-323-7073 PH

PROJECT TITLE:

AMERICAN
LEGACY FARM

3405 FM 465
SEGUIN, TX. 78155

APPROVED

Permit No. FA25-00320
Name:
Date: 08.12.2025
Approved By: Wayne Lehman

STAMP:
 FOR SUBMITTAL RECORD DRAWINGS
I have reviewed these plans and
 certify that they comply with the applicable
codes and standards;
Or
 certify they are copied scaled engineering
plans and any violations of the applicable codes or
standards are specifically noted on these plans.

Global Fire Protection Solutions, LLC
21115 Pacific Grove
San Antonio, Tx. 78259
ACR-2416677
Aron M. Fitzgerald
Aron M. Fitzgerald
Date: 08-01-2025
APS-1741359

SUBMITTALS / REVISIONS:		
NO.	DATE	DESCRIPTION
	2025.08.01	AS-BUILTS

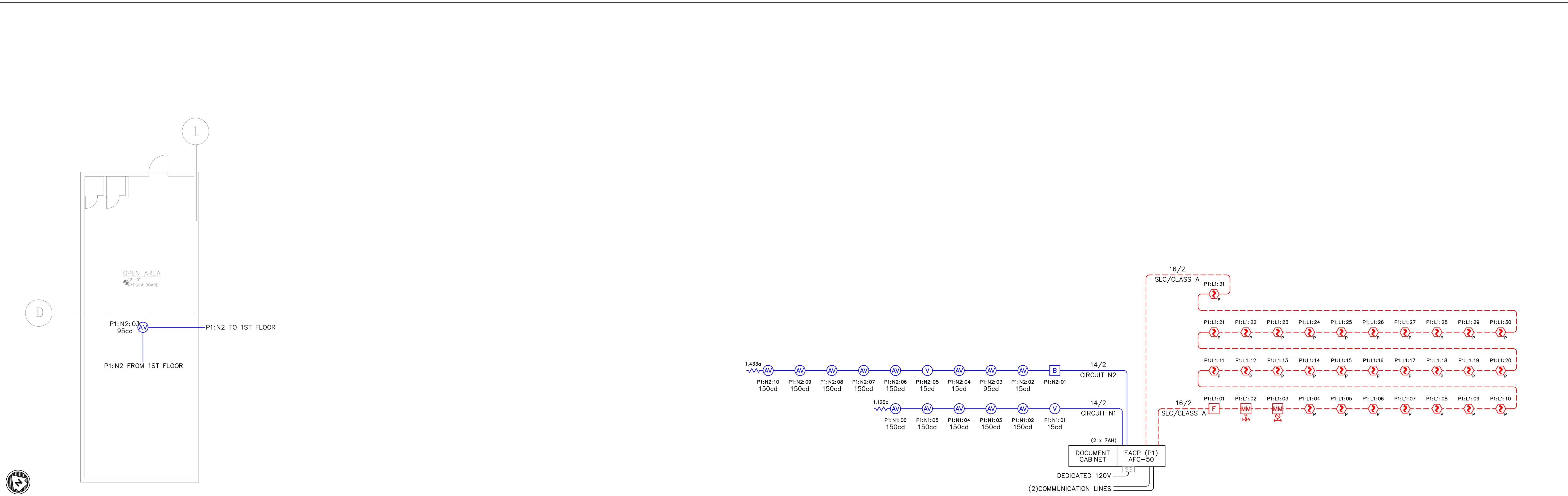
DATE: 05-29-2025
DRAWN BY: GFPS

SHEET TITLE:
FIRST FLOOR &
RISER DIAGRAM

FIRE ALARM PLANS

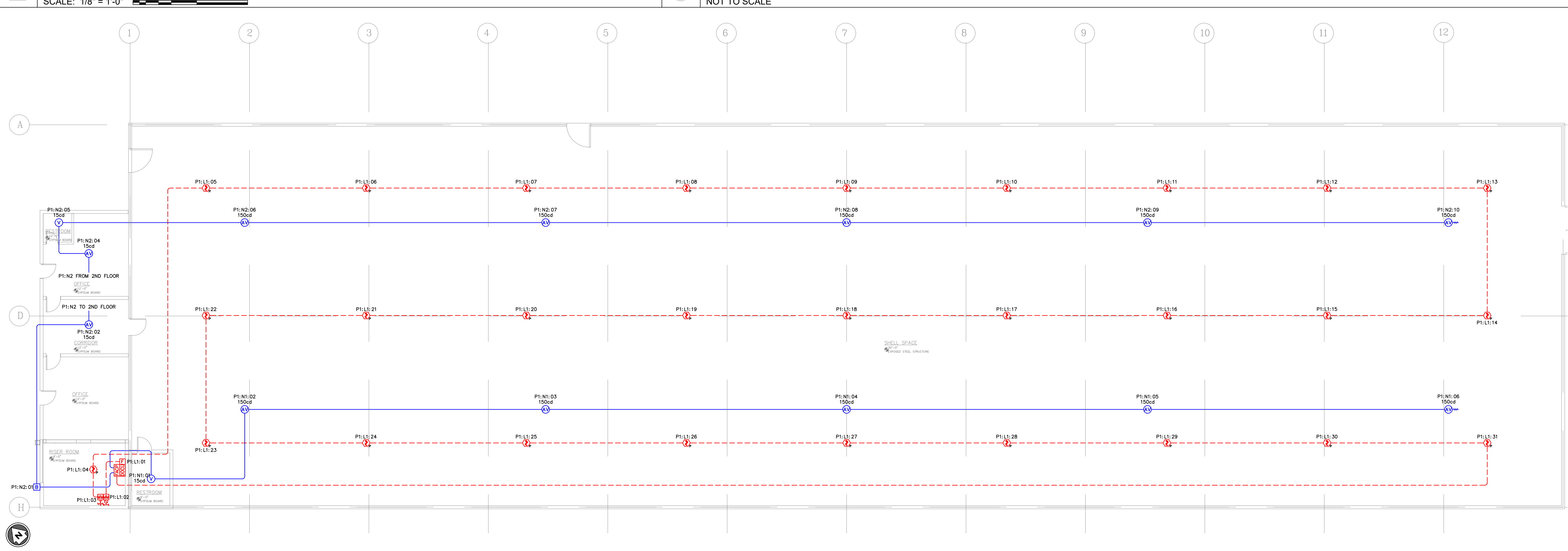
SHEET NUMBER:

FA1.1

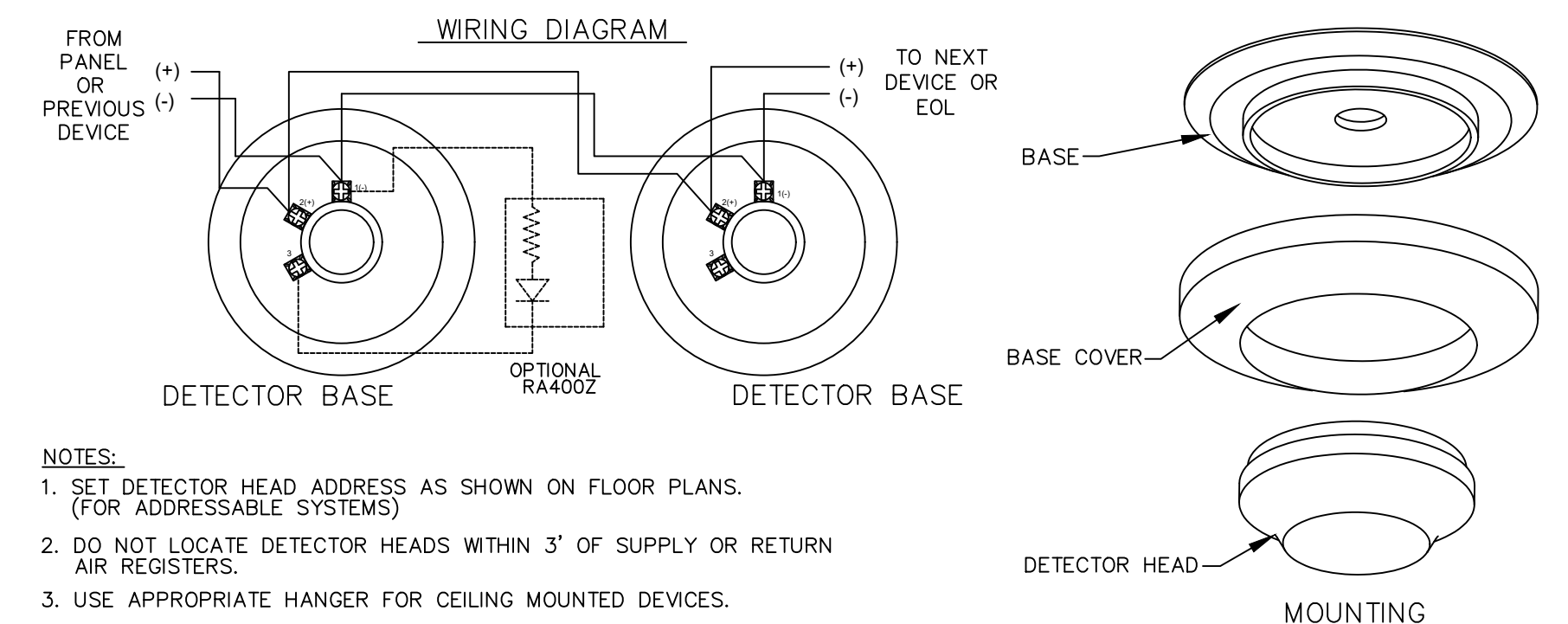
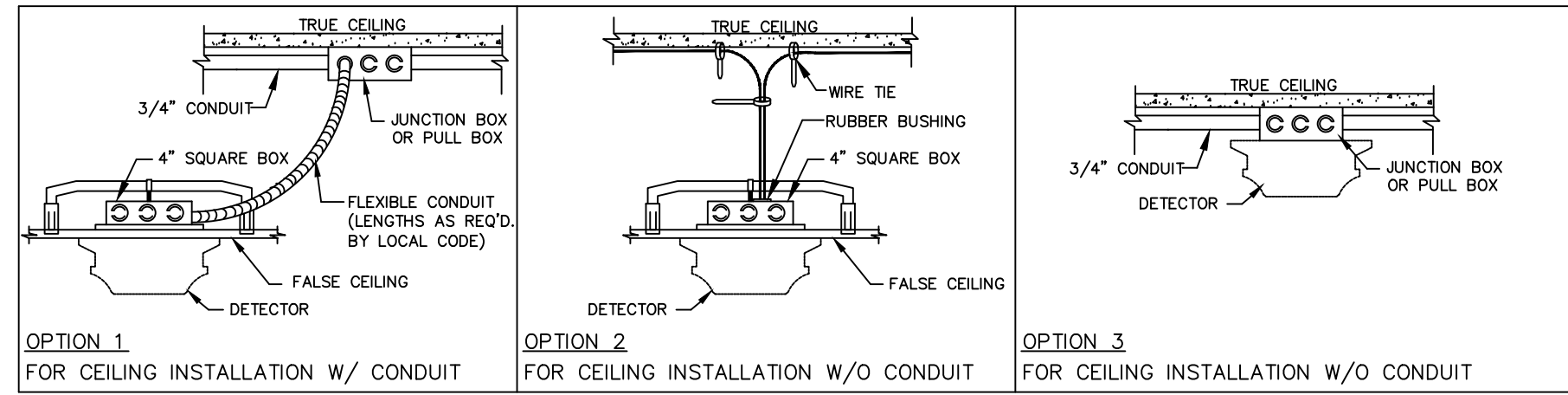


2 FIRE ALARM PLAN - 2ND FLOOR
SCALE: 1/8" = 1'-0"

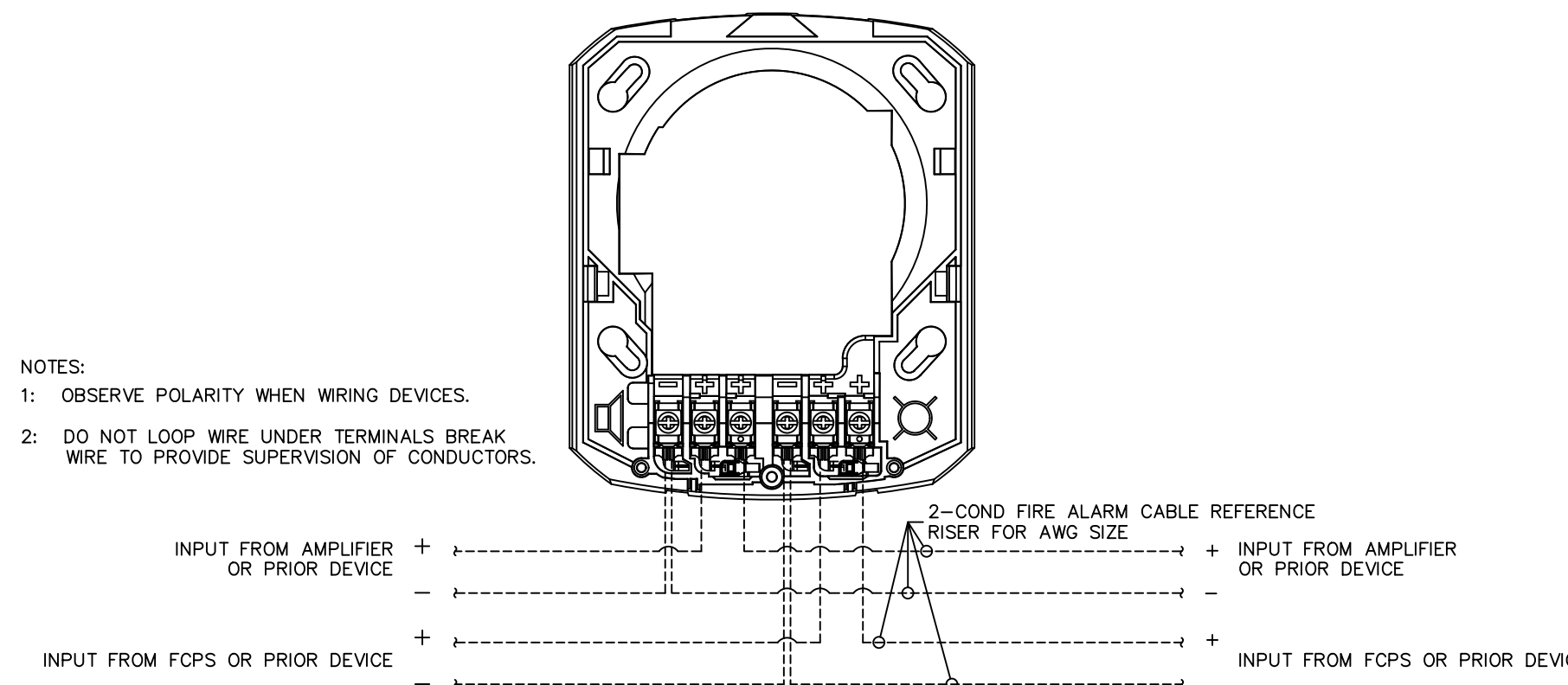
3 FIRE ALARM RISER DIAGRAM
NOT TO SCALE



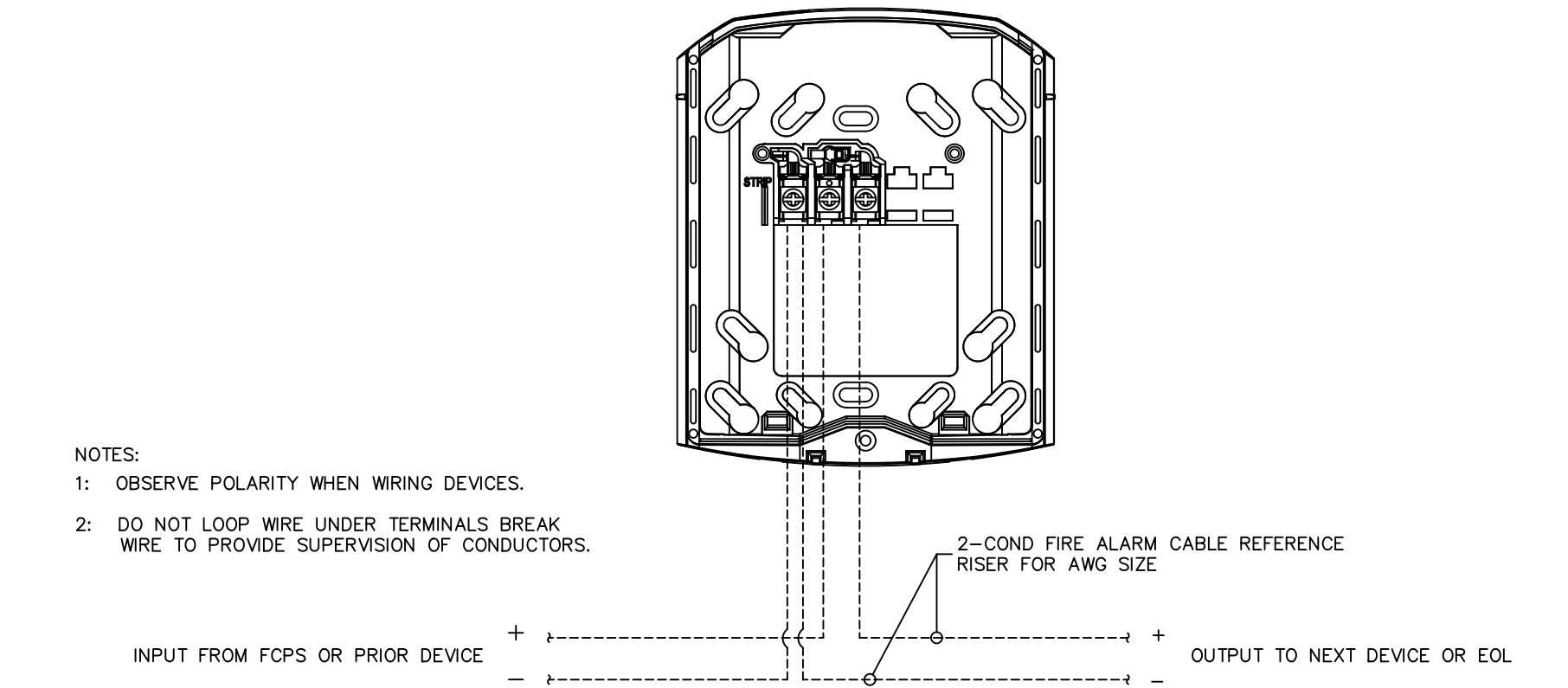
1 FIRE ALARM PLAN - 1ST FLOOR
SCALE: 3/32" = 1'-0"



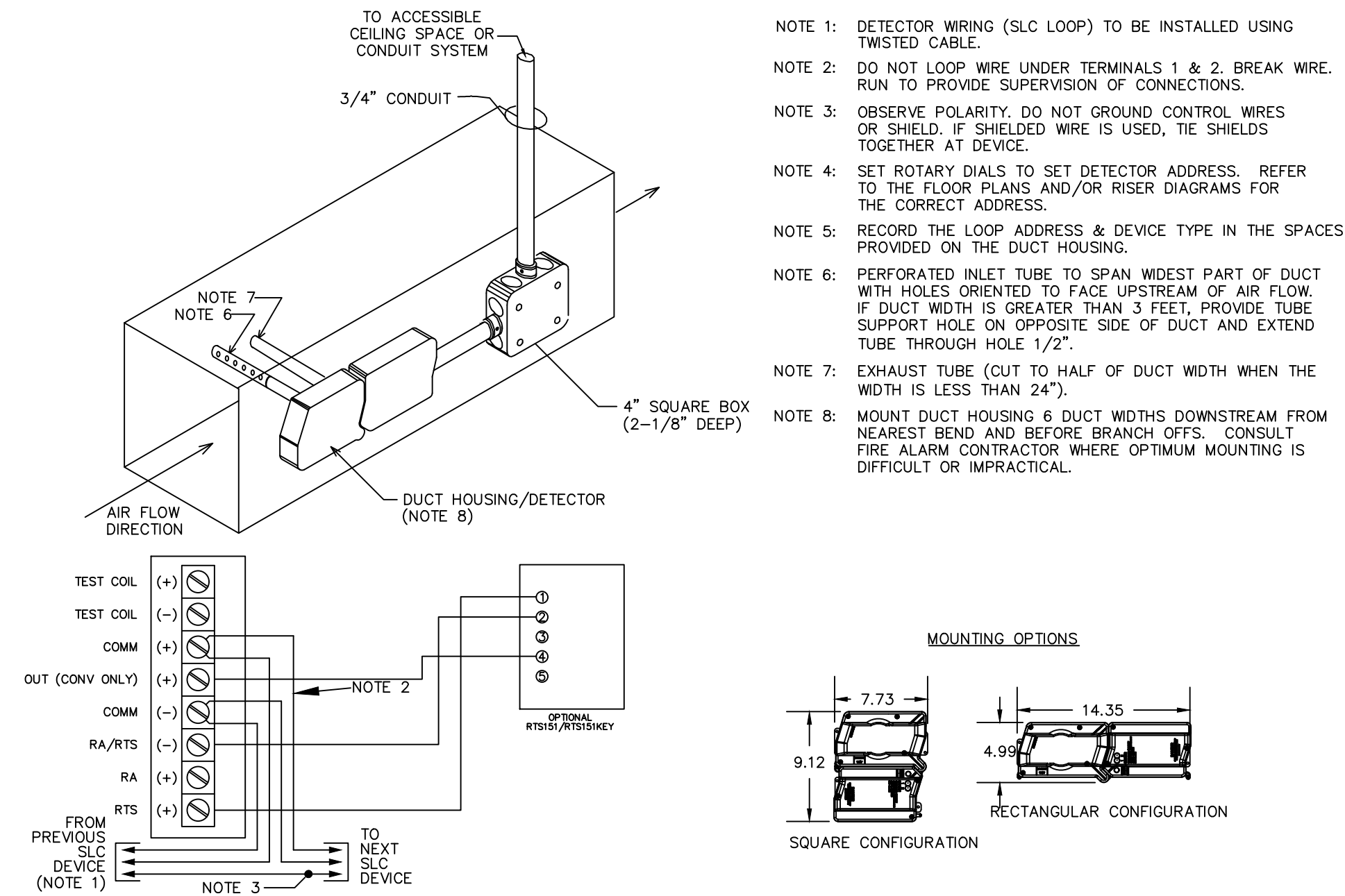
7 TYPICAL DETECTOR WIRING DETAIL
NOT TO SCALE



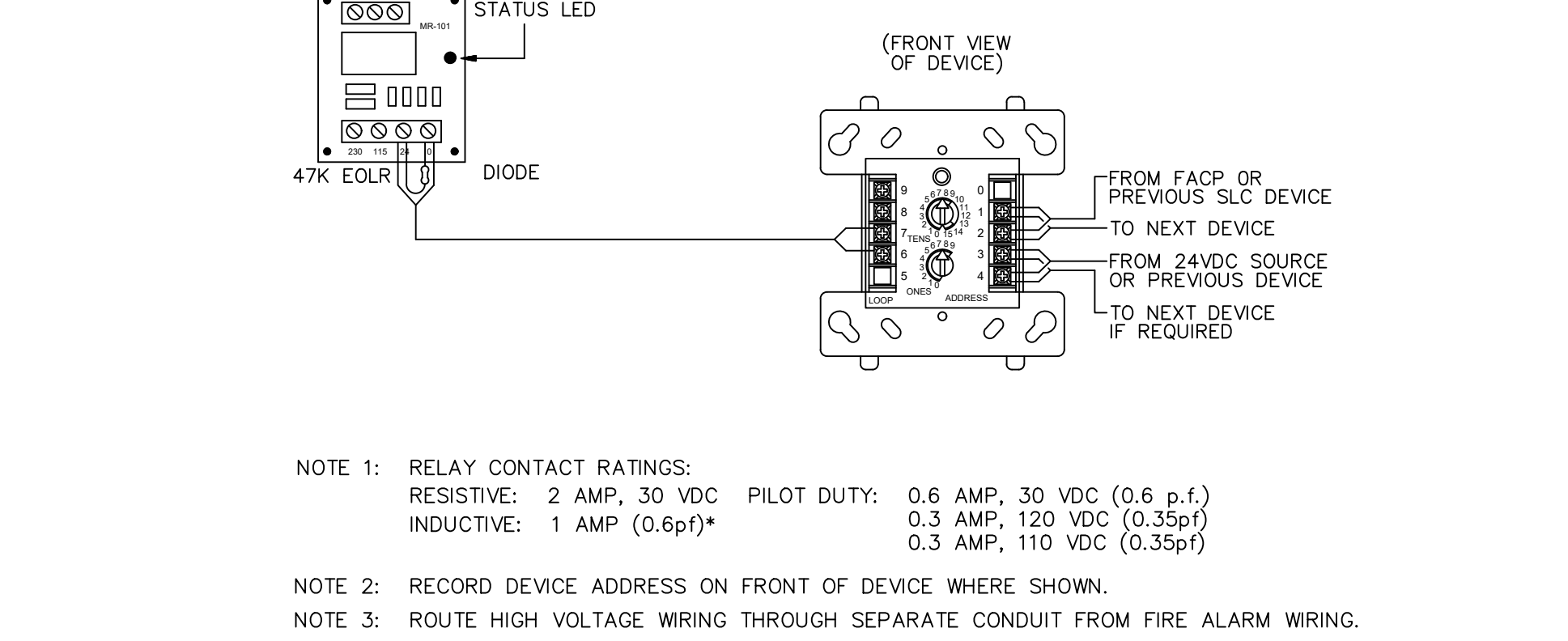
4 TYPICAL SPEAKER/STROBE WIRING DETAIL
NOT TO SCALE



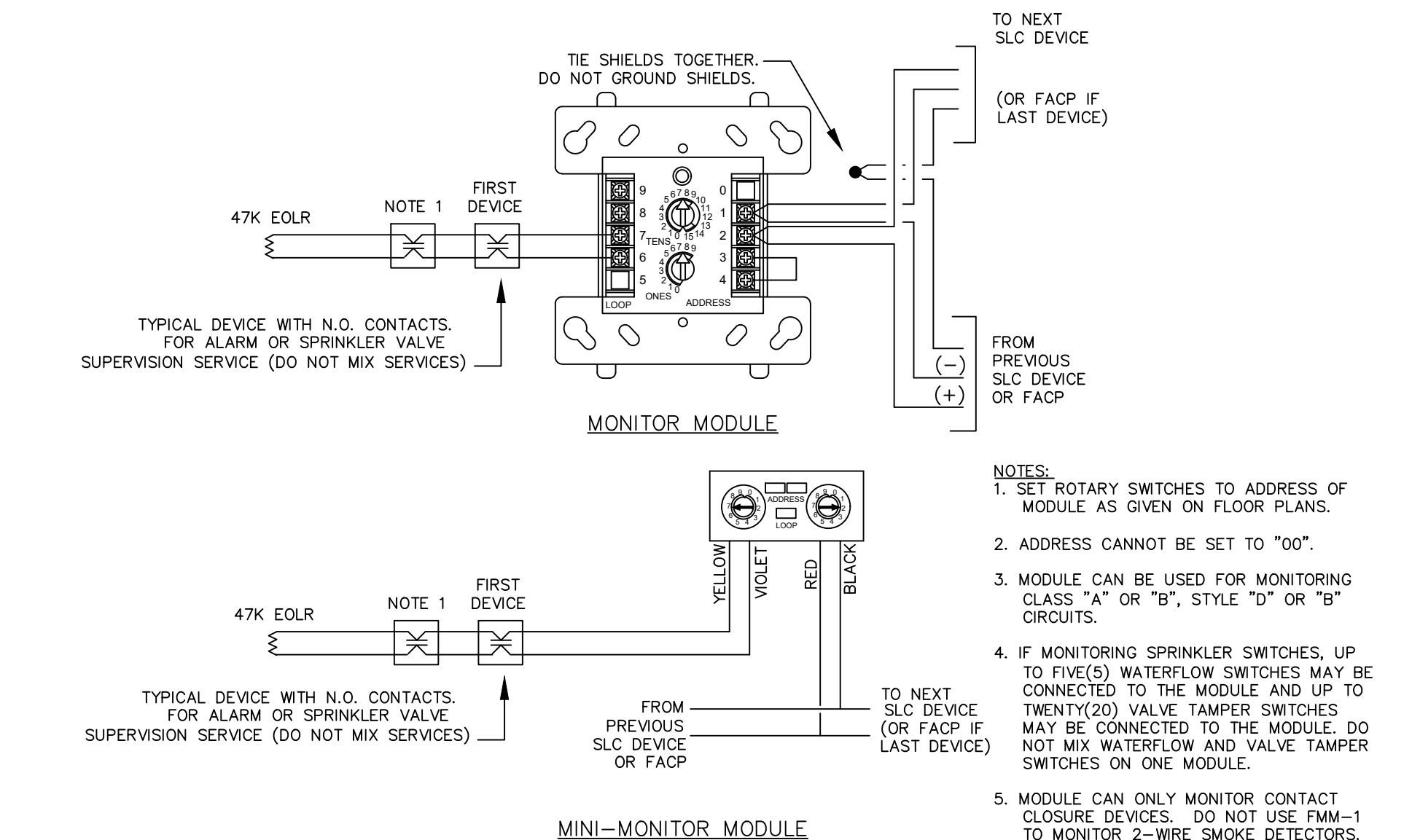
1 TYPICAL HORN/STROBE, STROBE, HORN WIRING DETAIL
NOT TO SCALE



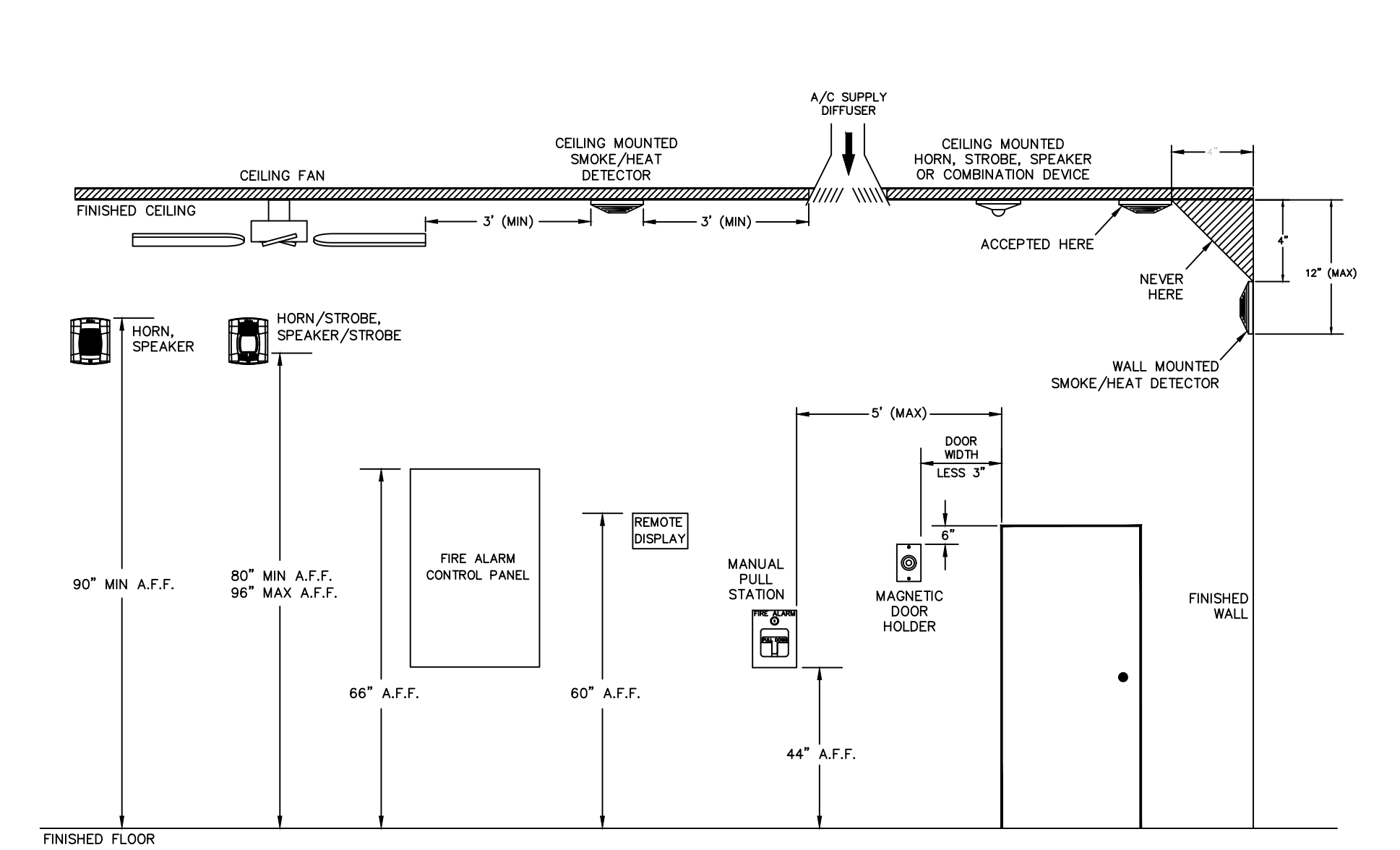
8 TYPICAL DUCT SMOKE DETECTOR WIRING DETAIL
NOT TO SCALE



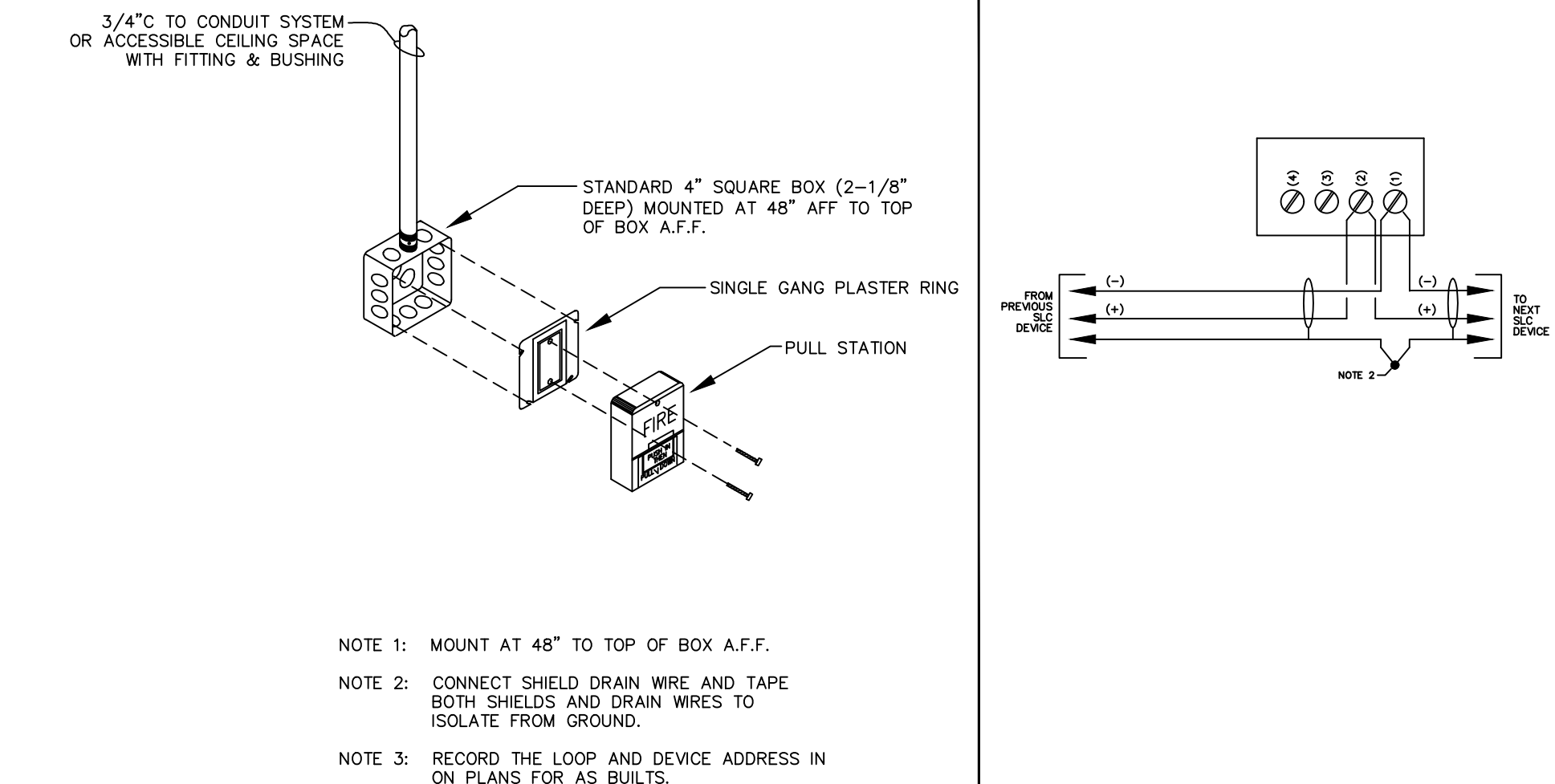
5 TYPICAL CONTROL MODULE W/ MR-201 WIRING DTL.
NOT TO SCALE



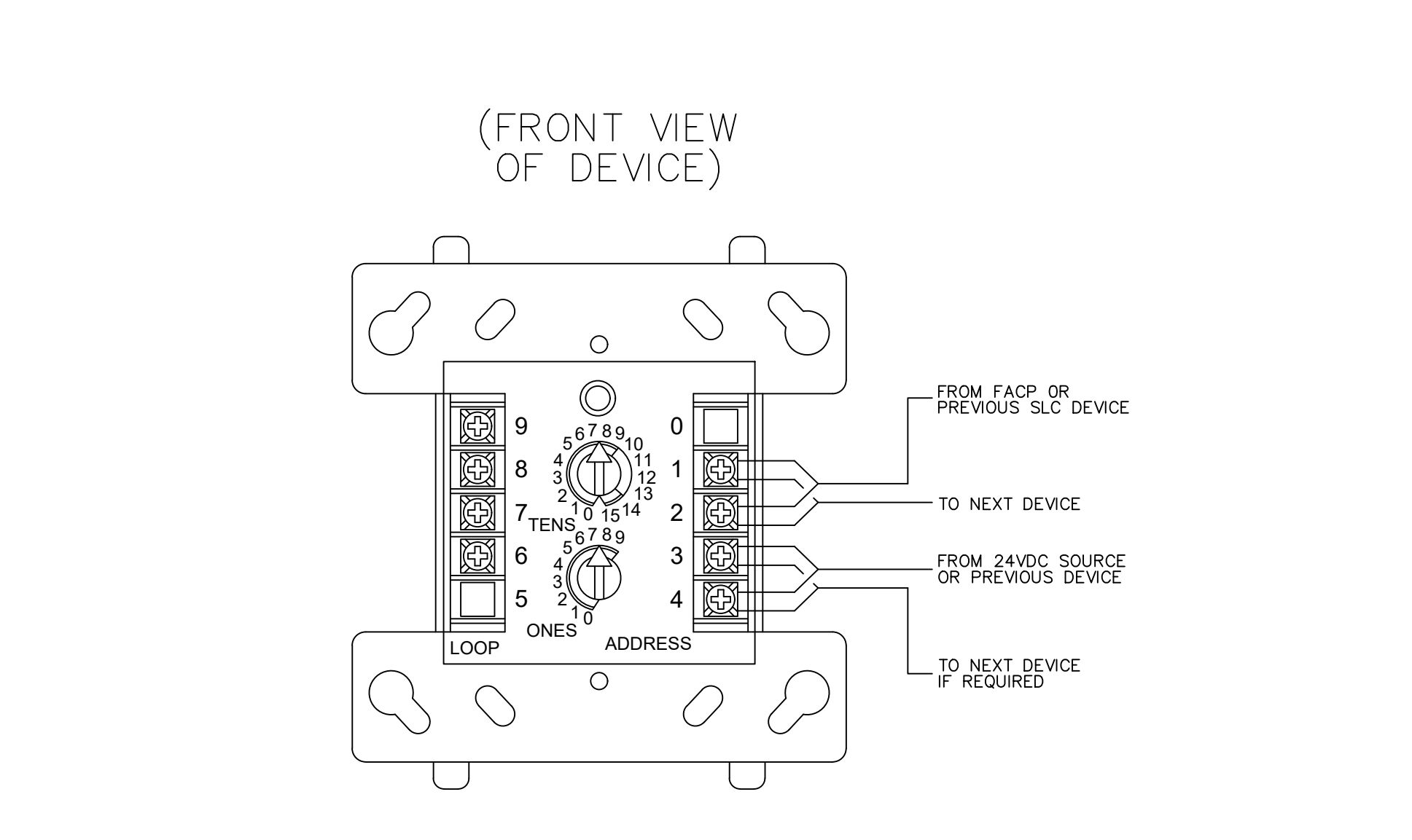
2 TYPICAL MONITOR MODULE WIRING DETAIL
NOT TO SCALE



9 DEVICE MOUNTING HEIGHTS
NOT TO SCALE



6 TYPICAL MANUAL PULL STATION WIRING DETAIL
NOT TO SCALE



3 TYPICAL RELAY MODULE WIRING DETAIL
NOT TO SCALE

SYSTEM DESIGNER:

GLOBAL FIRE PROTECTION SOLUTIONS, LLC

21115 PACIFIC GROVE
SAN ANTONIO, TX 78259
ACR-2416677

210.960.2772 F
210.940.2722 F

INSTALLING CONTRACTOR:

MURRAY FIRE ALARM & SECURITY, LLC

4627 N. STAHL PARL. STE. 101
SAN ANTONIO, TX. 78217
ACR-2451226

210-323-7973 PH

PROJECT TITLE:

AMERICAN LEGACY FARM

3405 FM 465
SEGUIN, TX. 78155

APPROVED

Permit No. FA25-00320
Name:
Date: 08.12.2025
Approved By: Wayne Lehman

STAMP:
 FOR SUBMITTAL RECORD DRAWINGS
I have reviewed these plans and certify that they comply with the applicable codes and standards;
Or
 certify they are copied sealed engineering plans and any violations of the applicable codes or standards are specifically noted on these plans.

Global Fire Protection Solutions, LLC
21115 Pacific Grove
San Antonio, Tx. 78259
ACR-2416677
Aaron M. Fitzgerald
Aaron M. Fitzgerald
Date: 08-01-2025
APS-1741359

SUBMITTALS / REVISIONS:

NO.	DATE	DESCRIPTION
	2025.08.01	AS-BUILTS

DATE: 05-29-2025
DRAWN BY: GFPS
SHEET TITLE: TYPICAL DETAILS

FIRE ALARM PLANS
SHEET NUMBER: FA2.0