

# 849 CASTLE HILL AVE

Bronx, New York | Corner Retail | Former Restaurant

AVAILABLE NOW

**1,865 SF**

TOTAL SPACE

**~823 SF**

GROUND FLOOR

**~1,042 SF**

LOWER LEVEL



## PROPERTY OVERVIEW

Rare corner retail opportunity at 849 Castle Hill Avenue in the Bronx — a high-traffic, transit-rich neighborhood with dense residential demand. This former full-service restaurant offers immediate utility for food & beverage operators, with existing commercial venting, hood system, and active gas line already in place.

The bi-level layout provides distinct zones: a ~823 SF ground floor with 10'2" ceilings and prominent corner frontage, plus a ~1,042 SF finished lower level with its own separate street entrance — ideal for prep kitchens, storage, or additional guest seating.

The landlord is motivated and willing to work with qualified tenants on lease terms and build-out.

## SPECIFICATIONS

ADDRESS	849 Castle Hill Ave, Bronx NY
TOTAL SIZE	~1,865 SF
GROUND FLOOR	~823 SF
LOWER LEVEL	~1,042 SF (finished)
CEILING HEIGHT	10'2" (ground floor)
FRONTAGE	~21 ft + side exposure
CORNER	Yes — dual street frontage
ZONING	R3-2 w/ commercial overlay
BATHROOMS	2 (1 per floor)
CONDITION	Needs renovation
LEASE TERM	Minimum 5 years
ASKING RENT	Negotiable

# PHOTO GALLERY

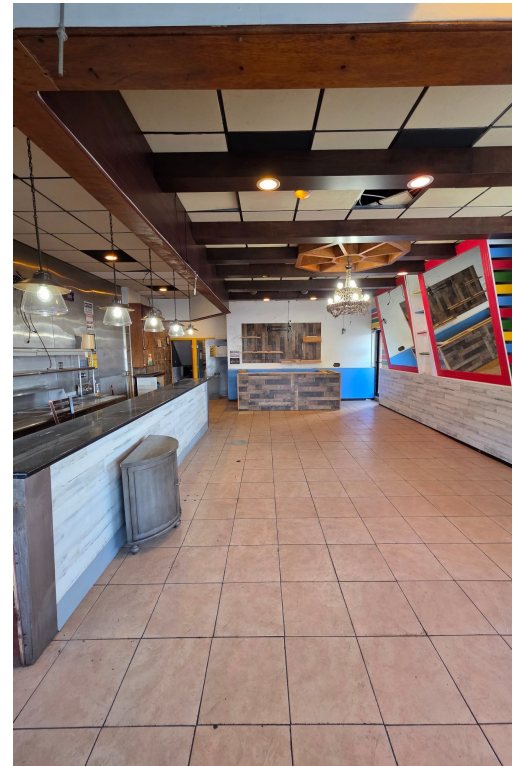
849 Castle Hill Ave · Bronx, NY



CORNER FRONTAGE



GROUND FLOOR INTERIOR



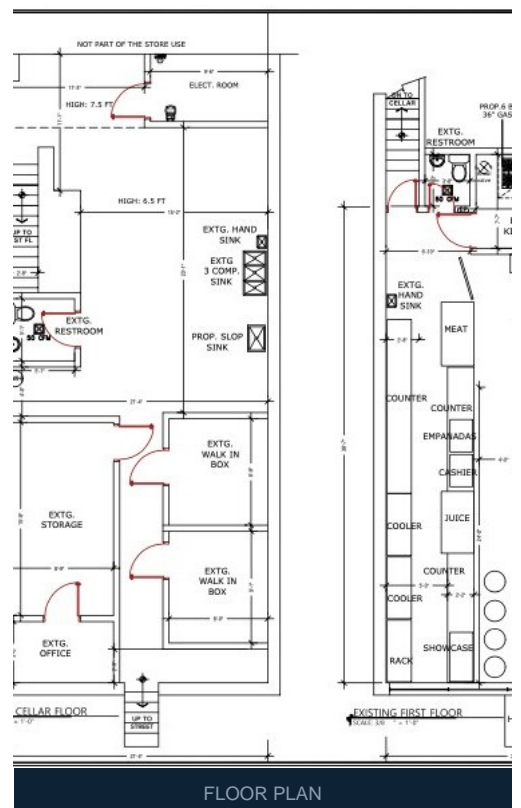
DINING AREA



LOWER LEVEL



RESTROOM



FLOOR PLAN

## IDEAL FOR:

■  
Restaurant / Café  
Takeout / Ghost Kitchen

■  
Medical / Dental  
Wellness

✂  
Salon / Barber  
Beauty Services

■  
Fitness Studio  
Martial Arts / Yoga

■  
Retail /  
Neighborhood Services

■  
Community Facility  
/ Education