

# FOR SALE / LEASE INDUSTRIAL BUILDING

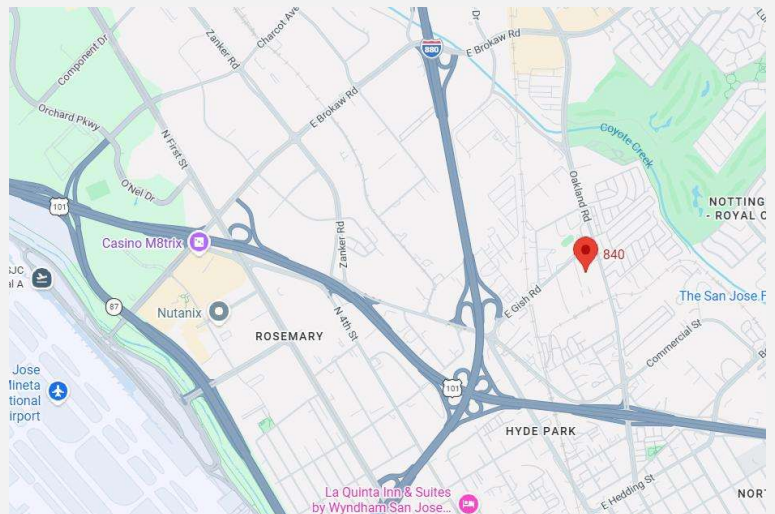
**KPA**  
COMMERCIAL

840 JURY COURT  
SAN JOSE, CA



## PROPERTY SUMMARY

- Building Size: ±15,124 SF
- Lot Size: ±37,461 SF (0.86 Acres)
- APN: 237-06-079
- Zoning: Heavy Industrial (HI)
- 2 Dock High Doors, 3 Grade Doors
- Sprinklered, Gas Available
- Clear Height: 16'
- 50% Office / 50% Warehouse
- Built in 1980
- Two 400 AMPS Panels (Buyer to Verify), 2 Meters
- Versatile Floorplan, Divides into Two Units
- Easy Access to Highway 880/101/87/280/SJC
- Call to Tour
- Sales Price: \$5,000,000 / \$330.60 psf / Lease Rate: \$1.55 nnn psf



Kevin Peixoto  
KPA Commercial, Inc.  
408.898.0177  
CalDRE No. 01411086  
kevin@kpacommercial.com

**KPACOMMERCIAL.COM**

The information contained herein was obtained from sources believed reliable; however, KPA Commercial, Inc. and its agents make no guarantee, warranty or representation, either expressed or implied, as to the completeness or accuracy thereof. The presentation of this property is submitted subject to errors, omissions, change of price, statements of income and expenses or conditions prior to sale or lease, or withdrawal without notice. Prospective Tenants and Buyers should consult their accountant, legal counsel or other professional advisor.

# FOR SALE / LEASE INDUSTRIAL BUILDING

**KPA**  
COMMERCIAL

840 JURY COURT  
SAN JOSE, CA

## EXISTING PLANS



## CONCEPTUAL PLANS



**\*Not to Scale**

Kevin Peixoto  
KPA Commercial, Inc.  
408.898.0177  
CalDRE No. 01411086  
kevin@kpacommercial.com

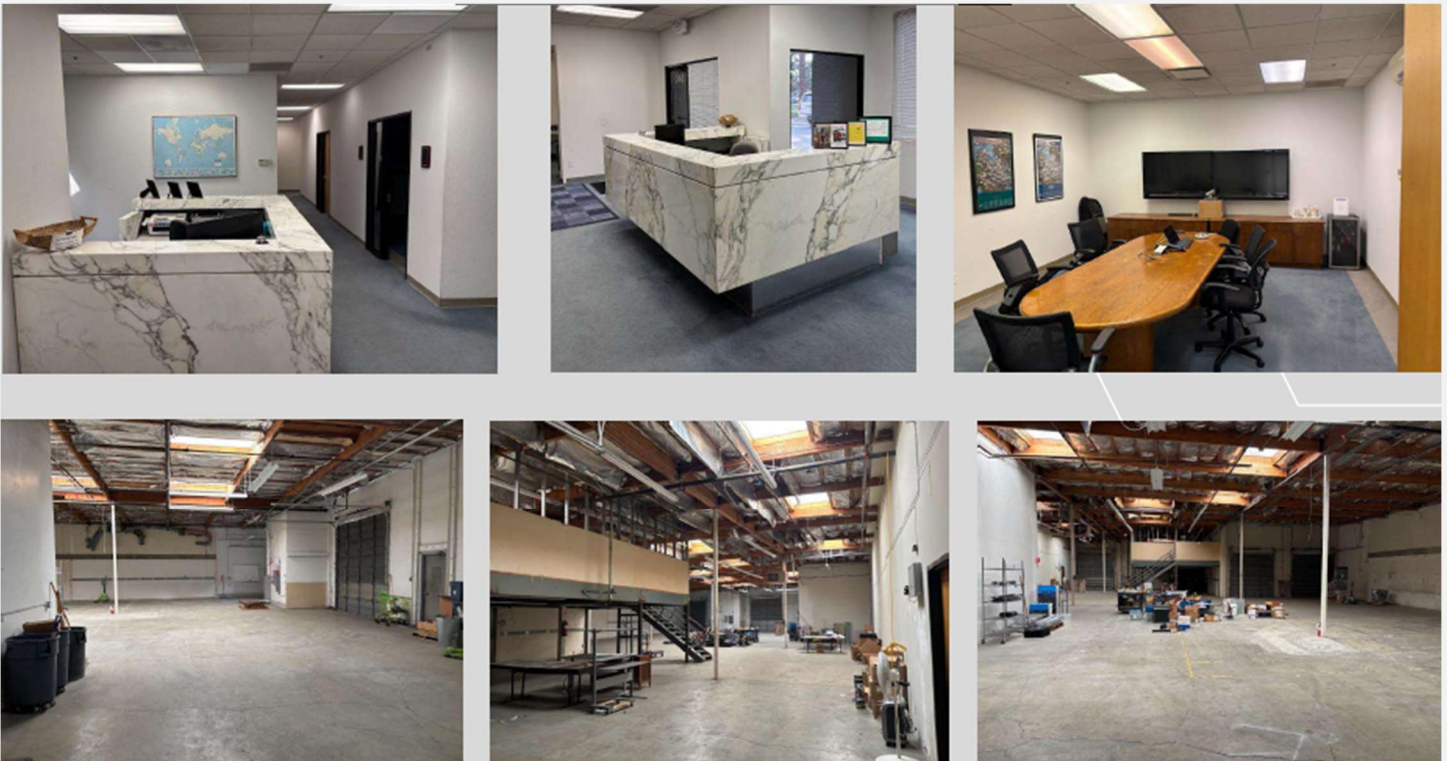
**KPACOMMERCIAL.COM**

The information contained herein was obtained from sources believed reliable; however, KPA Commercial, Inc. and its agents make no guarantee, warranty or representation, either expressed or implied, as the completeness or accuracy thereof. The presentation of this property is submitted subject to errors, omissions, change of price, statements of income and expenses or conditions prior to sale or lease, or withdrawal without notice. Prospective Tenants and Buyers should consult their accountant, legal counsel or other professional advisor.

# FOR SALE / LEASE INDUSTRIAL BUILDING

**KPA**  
COMMERCIAL

840 JURY COURT  
SAN JOSE, CA



Kevin Peixoto  
KPA Commercial, Inc.  
408.898.0177  
CaDRE No. 01411086  
kevin@kpacommercial.com

**KPACOMMERCIAL.COM**

The information contained herein was obtained from sources believed reliable; however, KPA Commercial, Inc. and its agents make no guarantee, warranty or representation, either expressed or implied, as to the completeness or accuracy thereof. The presentation of this property is submitted subject to errors, omissions, change of price, statements of income and expenses or conditions prior to sale or lease, or withdrawal without notice. Prospective Tenants and Buyers should consult their accountant, legal counsel or other professional advisor.