

OFFICE / SUITES NEAR BUSY FM 1960

20713 ALDINE WESTFIELD RD, HUMBLE, TX 77338

FOR SALE: \$700,000

PROPERTY SUMMARY | OFFICE BUILDING



PROPERTY DESCRIPTION

Two-story office unit featuring a versatile layout ideal for salon and office use, currently configured to accommodate various businesses seamlessly. Enjoy the convenience of private entrances for downstairs suites and upstairs offices, ensuring privacy and ease of access for clientele and staff alike. The property boasts a functional design, comprising two kitchenettes, three bathrooms, ten private salon rooms, a well-appointed conference room, and two spacious office spaces. Impress clients and visitors alike with formal reception areas welcoming them into both office entries, setting the tone for professionalism and hospitality. Upstairs, a copy/storage room offers organizational solutions, while downstairs, a generously sized room is tailored for laundry service operations, adding value and efficiency to business operations. Explore the potential of this meticulously designed commercial space, offering versatility, functionality, and ample amenities to meet diverse business needs.

OFFERING SUMMARY

Sale Price:	\$700,000
Lot Size:	6,229 SF
Building Size:	3,665 SF

ADAM OLSEN, CCIM

713.614.2670

adam@thecommercialprofessionals.com

THE COMMERCIAL PROFESSIONALS

To Schedule A Showing Call 713.538.1638

LOCATION DESCRIPTION

- Just 0.3 mile off of bustling FM 1960 which boasts an AADT of 40,990
- 5 miles away from The Woodlands, Texas
- Located on Aldine Westfield Rd (AADT 16,806 - 2021 Data)
- 7 miles from George Bush Intercontinental Airport

PROPERTY HIGHLIGHTS

- Ideal location to accommodate a variety of business needs
- Private entrances for upstairs unit and downstairs units.
- Property comprised of 10 private salon suites, a conference room, 2 office spaces, 2 kitchenettes, 3 bathrooms, & a laundry room
- Formal reception area for each office entry
- Ample private parking spaces, protected with a fully automated gate

THE COMMERCIAL PROFESSIONALS

713.614.2670

thecommercialprofessionals.com

2800 Post Oak Blvd, Suite 4100, Houston, TX 77056

OFFICE / SUITES NEAR BUSY FM 1960

20713 ALDINE WESTFIELD RD, HUMBLE, TX 77338

FOR SALE: \$700,000

RETAILER MAP | OFFICE BUILDING



Google

Map data ©2024

ADAM OLSEN, CCIM

713.614.2670

adam@thecommercialprofessionals.com

THE COMMERCIAL PROFESSIONALS

To Schedule A Showing Call 713.538.1638

THE COMMERCIAL PROFESSIONALS

713.614.2670

thecommercialprofessionals.com

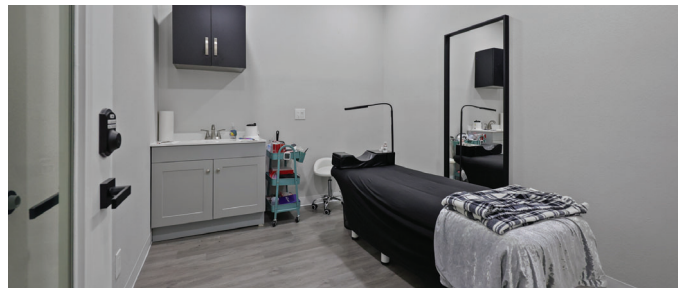
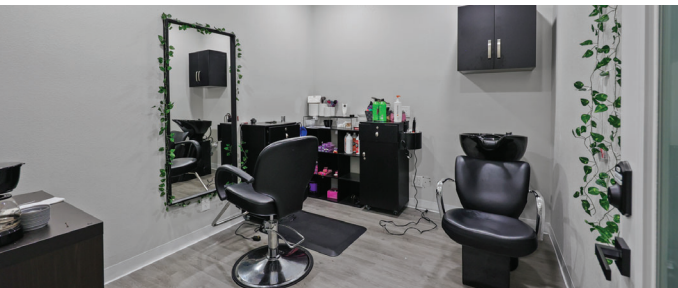
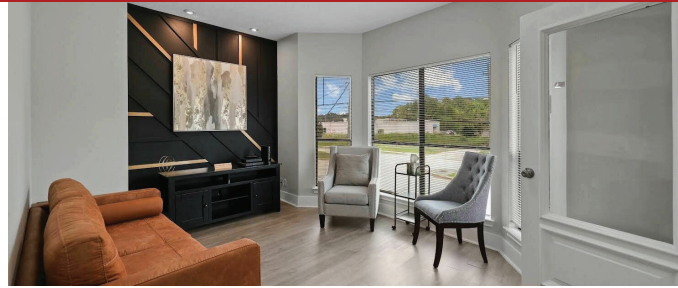
2800 Post Oak Blvd, Suite 4100, Houston, TX 77056

OFFICE / SUITES NEAR BUSY FM 1960

20713 ALDINE WESTFIELD RD, HUMBLE, TX 77338

FOR SALE: \$700,000

ADDITIONAL PHOTOS | OFFICE BUILDING



ADAM OLSEN, CCIM
713.614.2670
adam@thecommercialprofessionals.com

THE COMMERCIAL PROFESSIONALS
To Schedule A Showing Call 713.538.1638

THE COMMERCIAL PROFESSIONALS
713.614.2670
thecommercialprofessionals.com
2800 Post Oak Blvd, Suite 4100, Houston, TX 77056