

# FOR LEASE

# 50,000 SF Industrial Land

1420 ALAMEDA STREET, WILMINGTON, CA 90744



## PROPERTY FEATURES

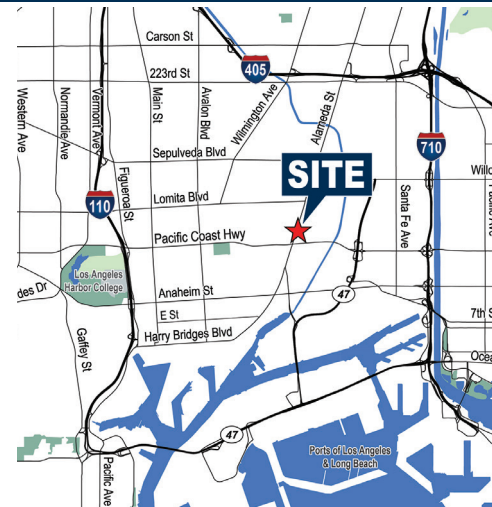
- Land Area: 50,000 SF
- Office Area: 1,250 SF
- Year Built: 1958
- Lights: Yes
- Fenced: Yes
- Zoned: LAM3

## PROPERTY HIGHLIGHTS

- Port Truck Yard
- Overweight Corridor
- LAM3 Zoning
- Fully Lit, Paved, and Fenced
- Immediate Port Access
- Site Divisible

### Asking Rate:

\$30,000 (\$0.60 PSF) per month, gross



EXCLUSIVELY OFFERED BY:

## **Voit**

REAL ESTATE SERVICES

**KEVIN FULTS**  
Vice President  
(424) 329-7508  
kfults@voitco.com  
License #02111820

**BRIAN MCLOUGHLIN**  
Senior Vice President, Partner  
(323) 633-1074  
bmcloughlin@voitco.com  
License #01268410

**DAVID FULTS**  
Senior Vice President, Partner  
(323) 791-0038  
dfults@voitco.com  
License #01242123

1025 W. 190th Street, #350 Los Angeles, California 90248 | License #01991785

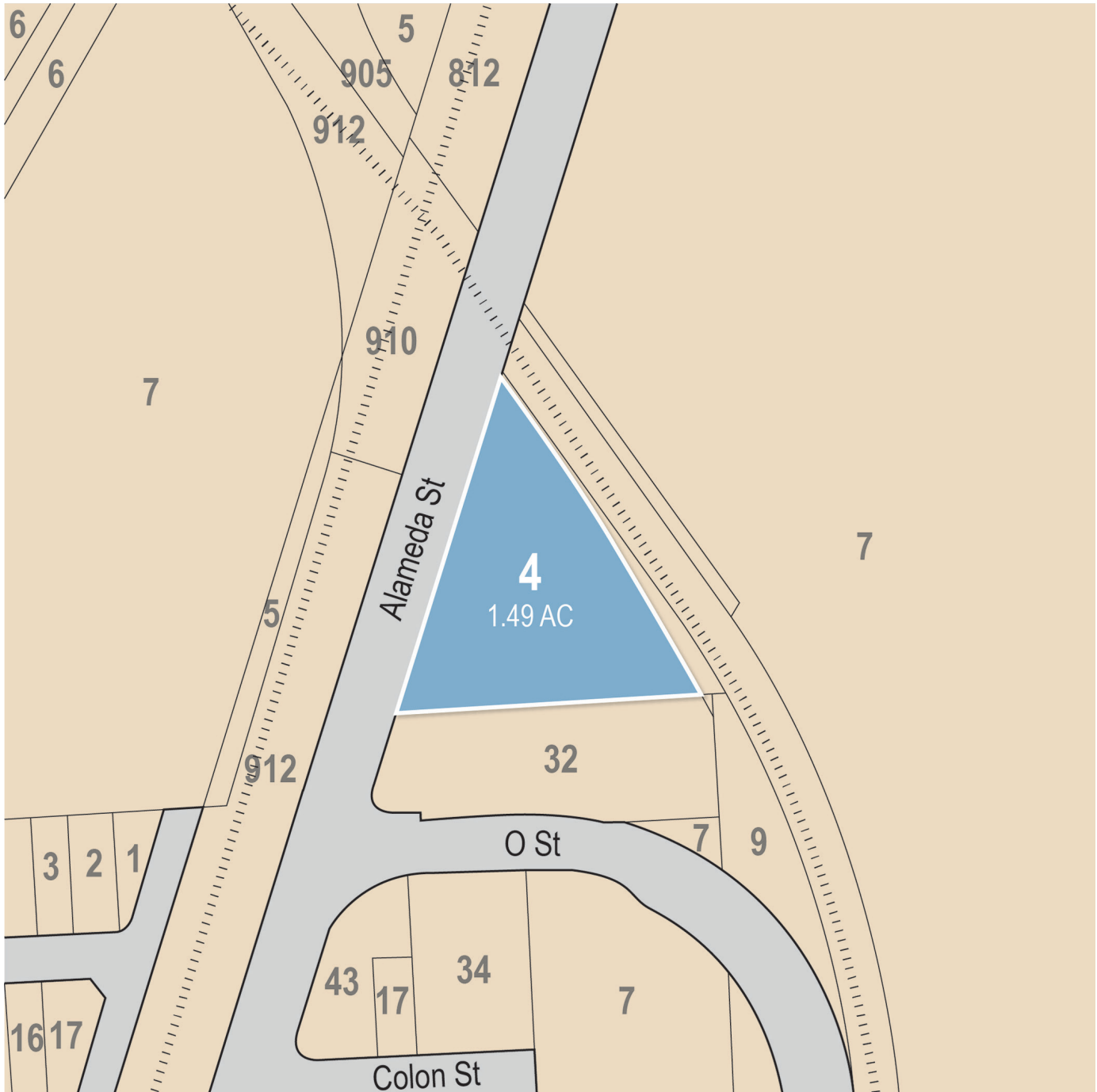
The information contained herein has been obtained from sources we deem reliable. While we have no reason to doubt its accuracy, we do not guarantee it. Licensed as Real Estate Salespersons by the DRE. ©2025 Voit Real Estate Services, Inc. All Rights Reserved. License #01991785.



# FOR LEASE

# 50,000 SF Industrial Land

1420 ALAMEDA STREET, WILMINGTON, CA 90744



EXCLUSIVELY OFFERED BY:

## Voit

REAL ESTATE SERVICES

**KEVIN FULTS**

Vice President

(424) 329-7508

kfults@voitco.com

License #02111820

**BRIAN MCLOUGHLIN**

Senior Vice President, Partner

(323) 633-1074

bmcloughlin@voitco.com

License #01268410

**DAVID FULTS**

Senior Vice President, Partner

(323) 791-0038

dfults@voitco.com

License #01242123

1025 W. 190th Street, #350 Los Angeles, California 90248 | License #01991785

The information contained herein has been obtained from sources we deem reliable. While we have no reason to doubt its accuracy, we do not guarantee it. Licensed as Real Estate Salespersons by the DRE. ©2025 Voit Real Estate Services, Inc. All Rights Reserved. License #01991785.