



DIAMOND

**\$225K**

Additional leasing  
commission bonus

Additional RexRewards available.  
Call Broker for Details



# 201,571 SF AVAILABLE FOR LEASE

## BRAND-NEW, PREMIER WAREHOUSE DISTRIBUTION FACILITY

9615 Norwalk Boulevard | Santa Fe Springs, CA



**Rexford  
Industrial**





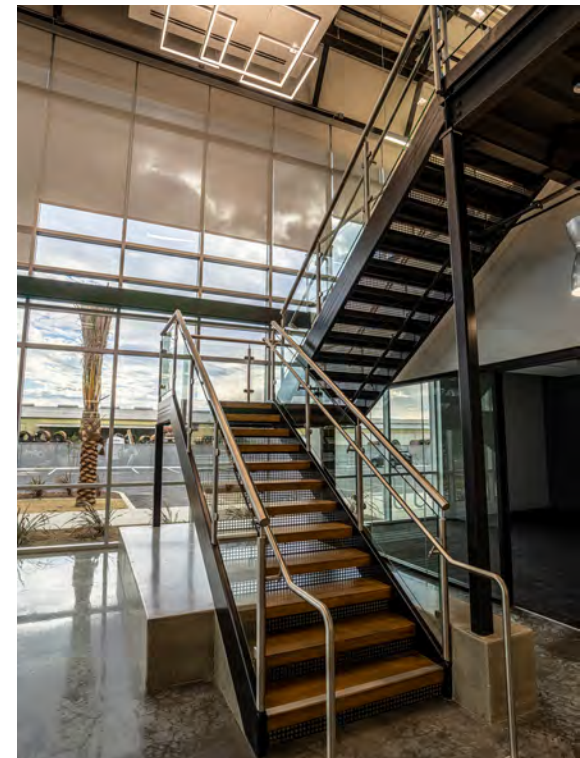


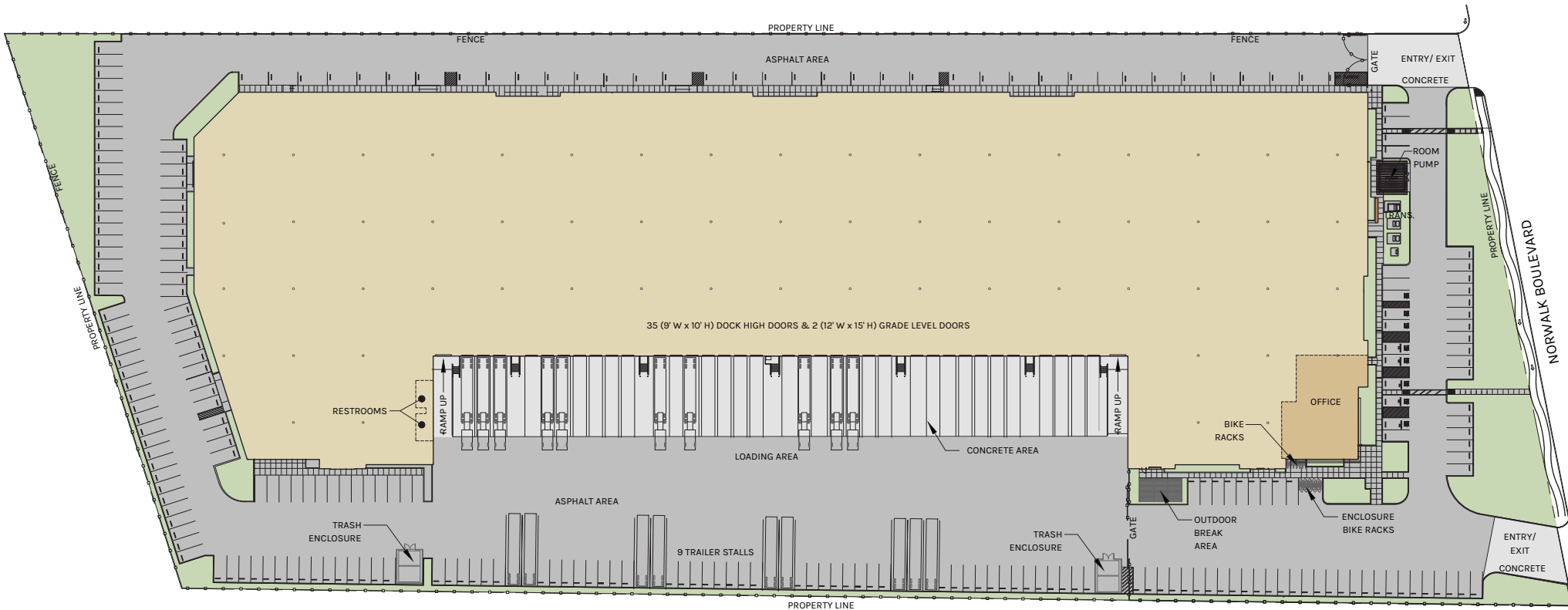
## PROPERTY FEATURES

- **LEED - Silver Features including:**

- Motion Sensor LED Lighting Throughout
- Touchless Plumbing Fixtures
- 25 EV Charger Stalls
- Outdoor Break Area
- Water Efficient Landscaping & Irrigation System
- Water Bottle Filling Station
- TPO Roofing with High Solar Reflectivity Value
- Installed Solar Panels, Estimated Annual Savings of 5%

- 201,571 SF Warehouse Distribution Building
- 7,767 SF of Two-Story Office Area
- 32' Interior Warehouse Clearance
- 35 Dock High Positions (3 Pit Levelers, 32 Edge of Dock Levelers)
- 2 Ground Level Doors
- Fully Sprinklered ESFR K-25 at 75 PSI
- 4,000 Amp Capacity (Tenant to Verify)
- 52' x 50' Column Spacing
- Remote Warehouse Restrooms
- 9 Trailer Parking Stalls
- 249 Parking Spaces
- Major Frontage on Norwalk Blvd
- Excellent Access to 5 and 605 Freeways





**WAREHOUSE**  
193,804 SF

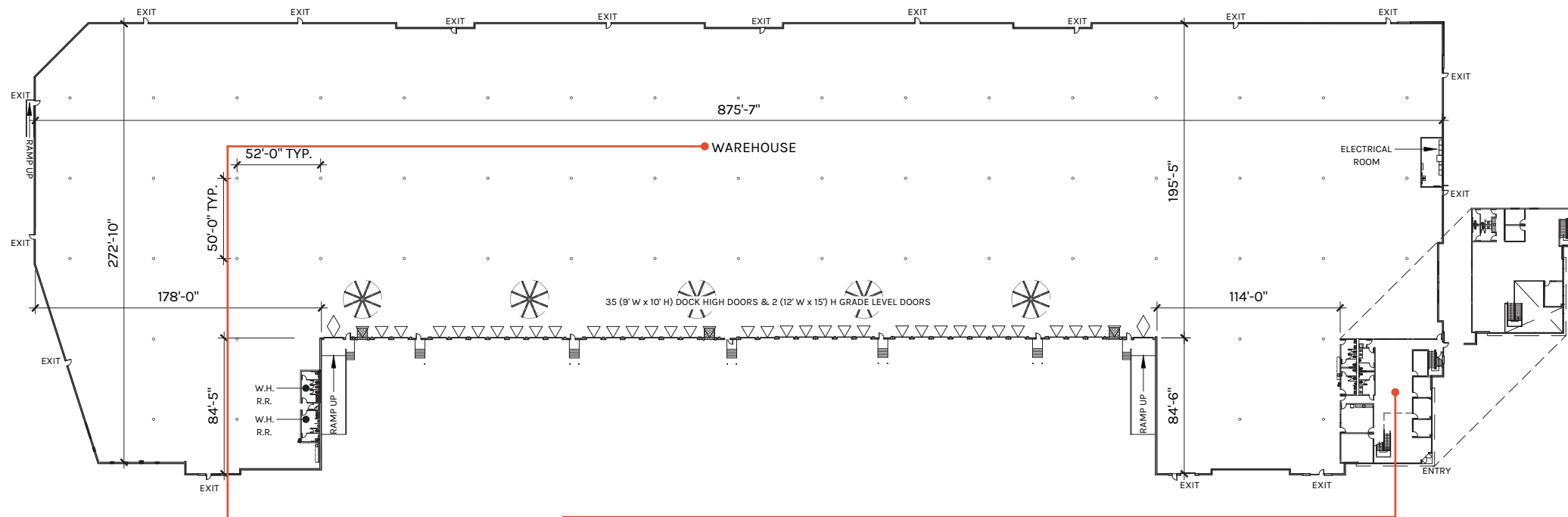
**OFFICE**  
7,767 SF

**TOTAL**  
201,571 SF

PLAN LAYOUT SUBJECT TO FIELD CONDITIONS AND MAY DIFFER FROM PLAN AS SHOWN. ALL INFORMATION PRESENTED ON THIS DRAWING IS PRESUMED TO BE ACCURATE, HOWEVER TENANT SHOULD VERIFY PERTINENT INFORMATION PRIOR TO COMMITTING TO A LEASE. ANY FURNITURE OR APPLIANCES SHOWN ON PLAN ARE FOR CONCEPT ONLY AND WILL BE TENANT PROVIDED.

# Floor Plan

# 9615 Norwalk Boulevard



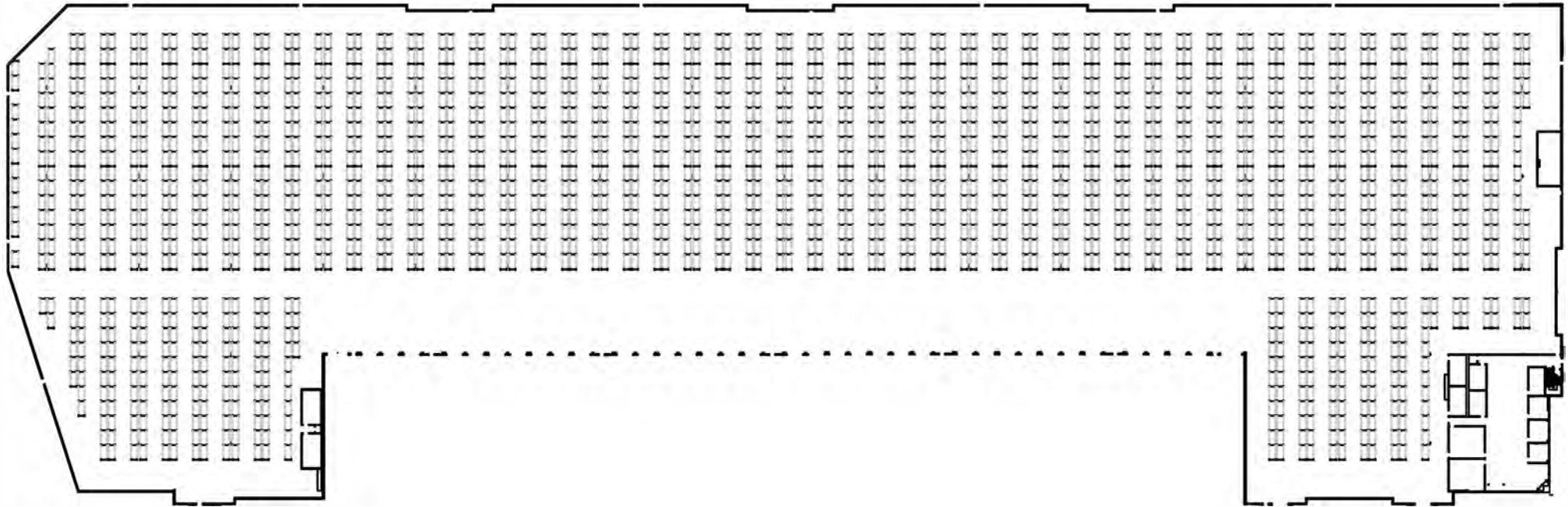
**WAREHOUSE**  
**193,804 SF**

**OFFICE**  
**7,767 SF**

**TOTAL**  
**201,571 SF**

PLAN LAYOUT SUBJECT TO FIELD CONDITIONS AND MAY DIFFER FROM PLAN AS SHOWN. ALL INFORMATION PRESENTED ON THIS DRAWING IS PRESUMED TO BE ACCURATE, HOWEVER TENANT SHOULD VERIFY PERTINENT INFORMATION PRIOR TO COMMITTING TO A LEASE. ANY FURNITURE OR APPLIANCES SHOWN ON PLAN ARE FOR CONCEPT ONLY AND WILL BE TENANT PROVIDED.





## Total Pallet Positions

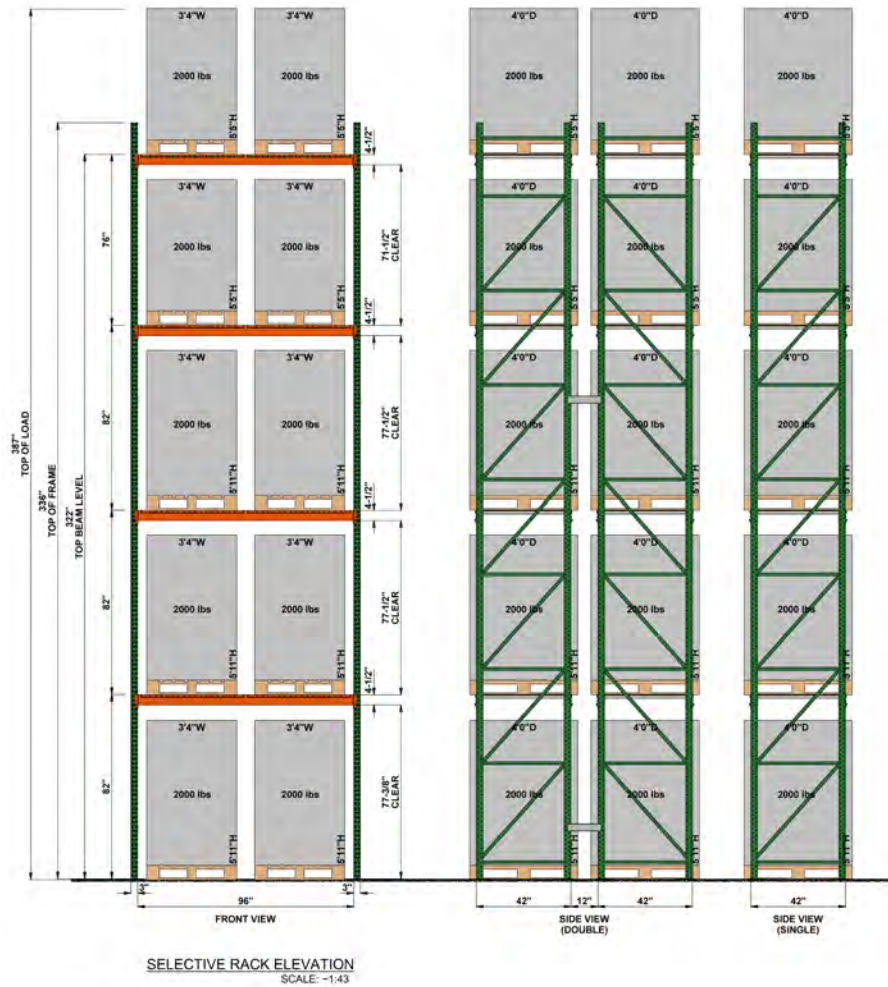
56" pallets: 18,500

64" pallets: 18,500

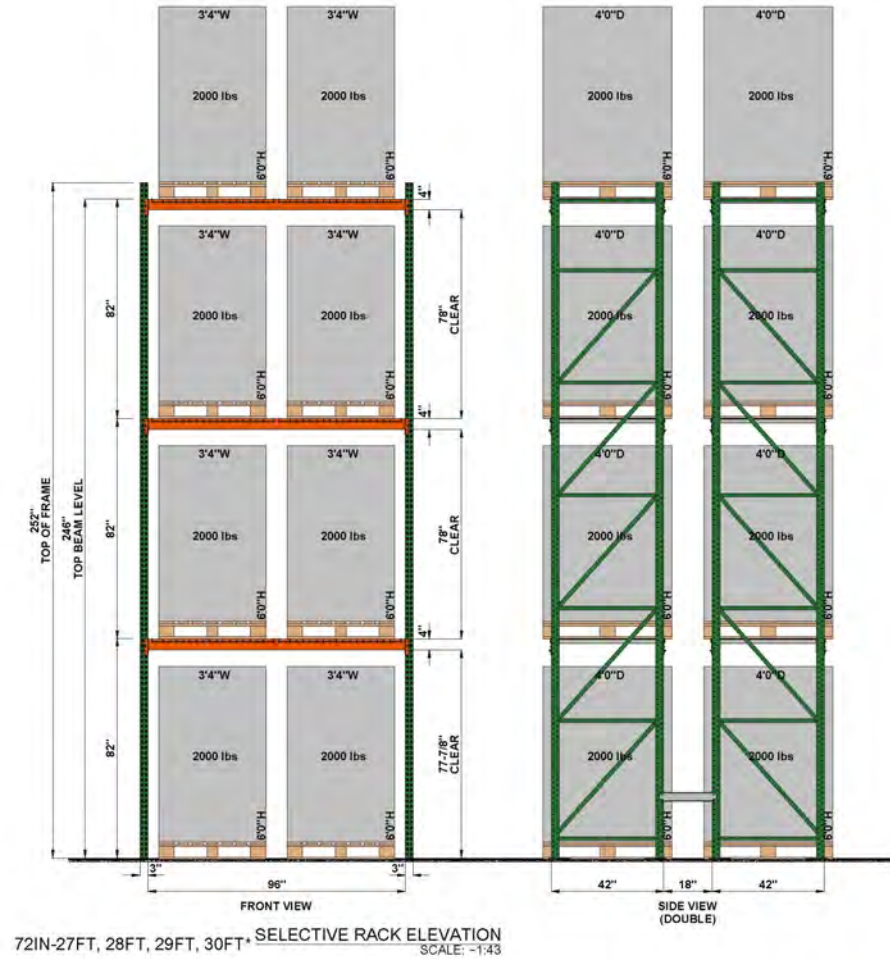
72" pallets: 14,800



## 56" and 64" Pallets

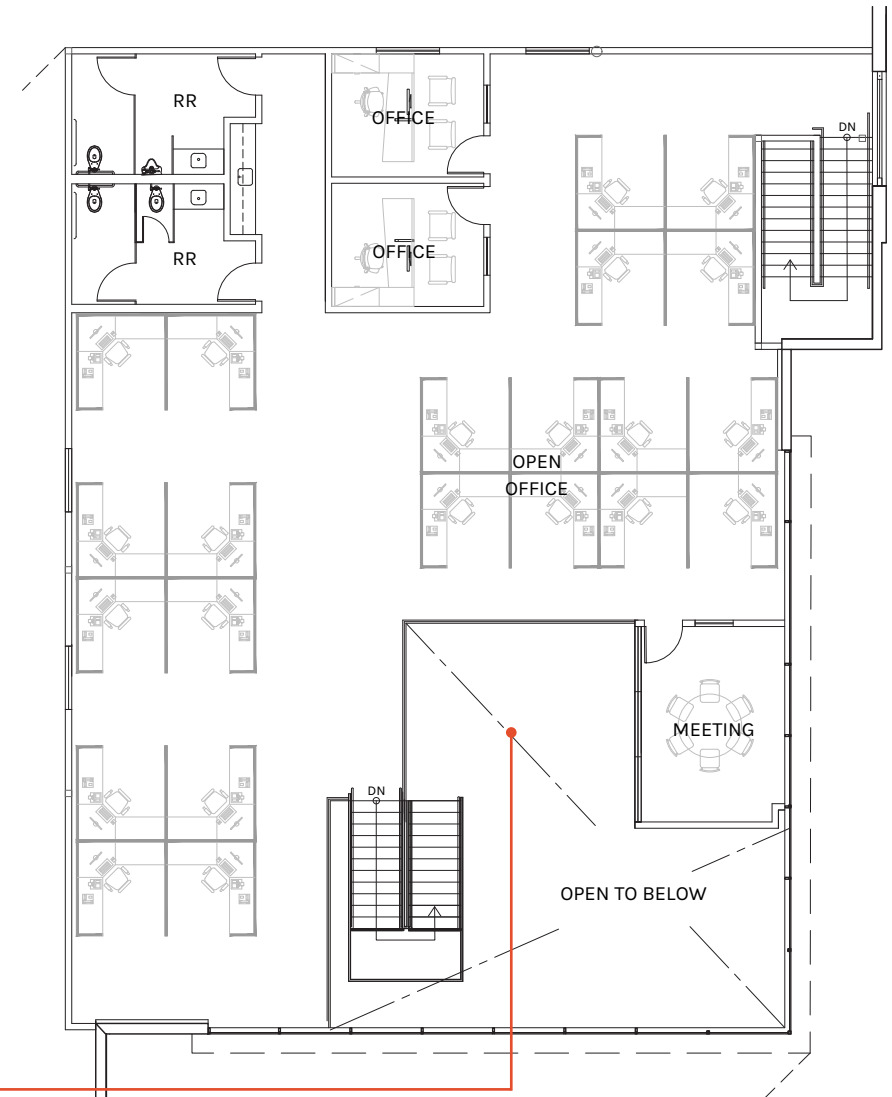
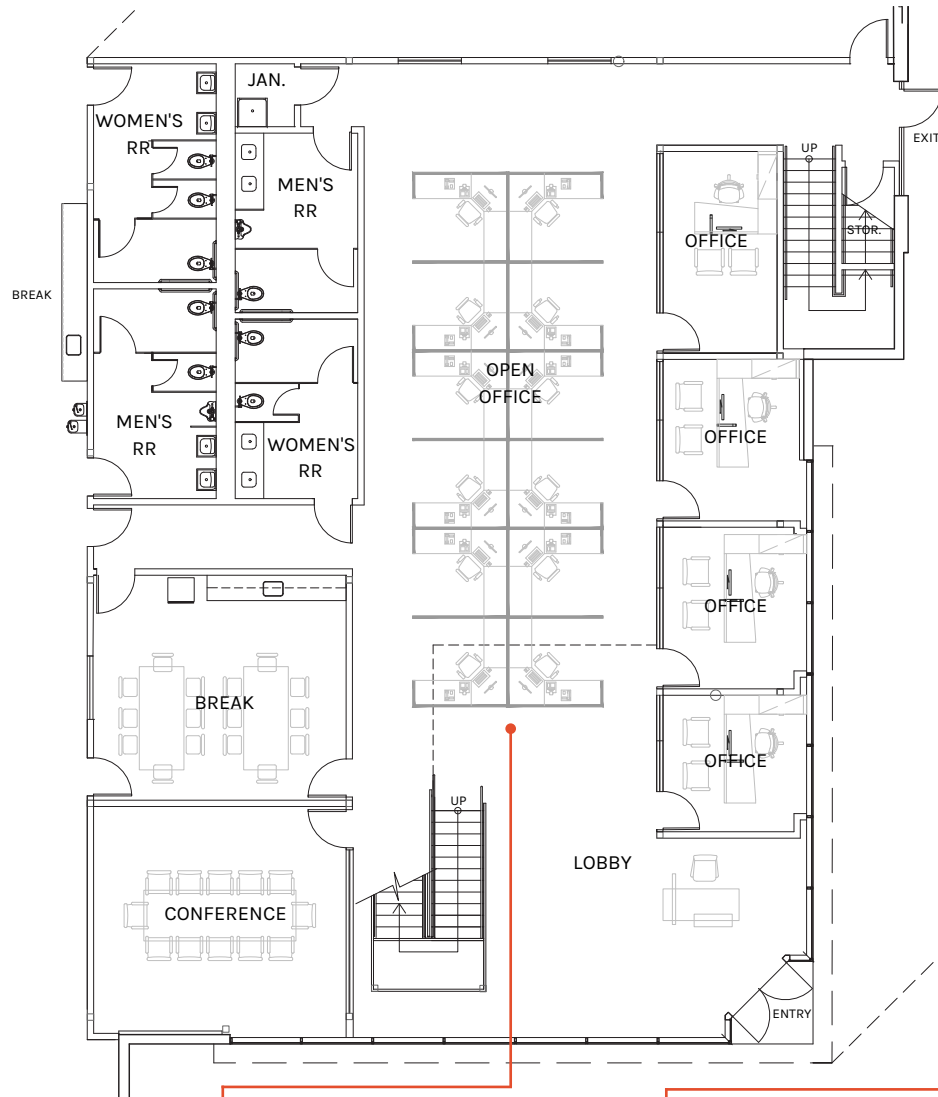


## 72" Pallets



# Office Floor Plan

9615 Norwalk Boulevard



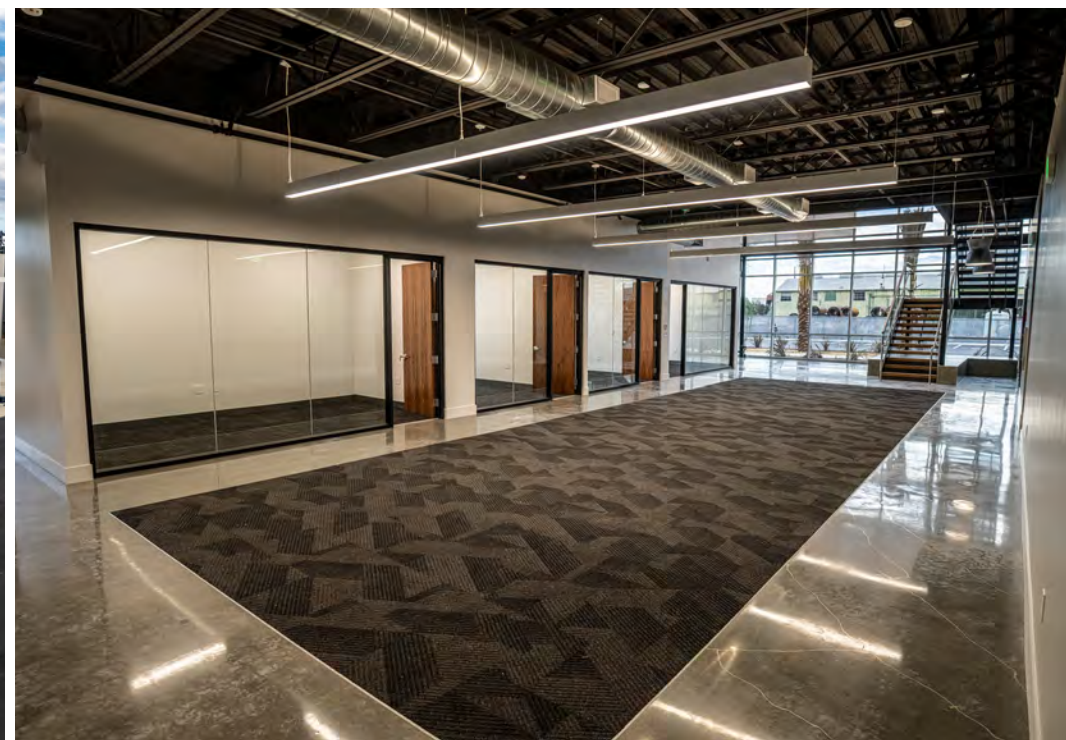
**GROUND FLOOR**  
4,220 SF

**MEZZANINE**  
3,547 SF

**TOTAL**  
7,767 SF

PLAN LAYOUT SUBJECT TO FIELD CONDITIONS AND MAY DIFFER FROM PLAN AS SHOWN. ALL INFORMATION PRESENTED ON THIS DRAWING IS PRESUMED TO BE ACCURATE, HOWEVER TENANT SHOULD VERIFY PERTINENT INFORMATION PRIOR TO COMMITTING TO A LEASE. ANY FURNITURE OR APPLIANCES SHOWN ON PLAN ARE FOR CONCEPT ONLY AND WILL BE TENANT PROVIDED.

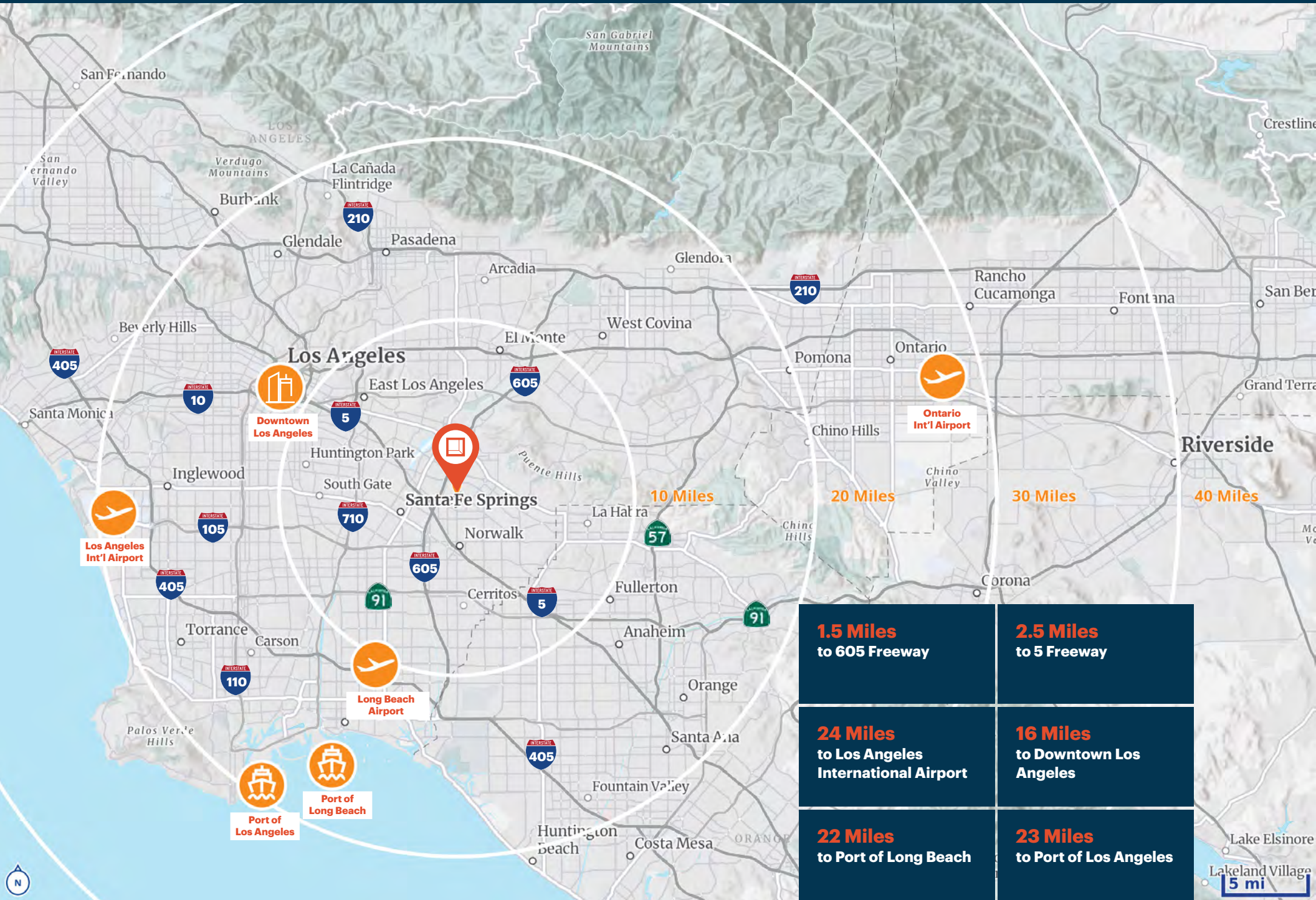






# Location

9615 Norwalk Boulevard





**Rexford  
Industrial**

## Leasing Contacts

### **Mike Foley**

Executive Vice President  
t 310-321-1813  
mike.foley@colliers.com  
LIC # 00771079

### **Chris Sheehan, SIOR**

Senior Executive Vice President  
t 310-321-1831  
chris.sheehan@colliers.com  
LIC # 01202469



### **Colliers**

2141 Rosecrans Avenue  
Suite 1120  
El Segundo, CA 90245

t 310-787-1000  
colliers.com

Corporate License #01908231

Copyright © 2025 Colliers International. Information herein has been obtained from sources deemed reliable, however its accuracy cannot be guaranteed. The user is required to conduct their own due diligence and verification.