

# 6900

## RIVER ROAD | PENNSAUKEN, NJ



### WAREHOUSE WITH ABUNDANT FENCED OUTDOOR STORAGE AREA



#### For More Information

**SCOTT MERTZ, SIOR**

+1 609 413 5647

scott.mertz@naimertz.com

**JONATHAN KLEAR**

+1 856 433 1801

jonathan.klear@naimertz.com



NAI MERTZ DISCLAIMER: NO WARRANTY OR REPRESENTATION, EXPRESS OR IMPLIED, IS MADE AS TO THE ACCURACY OF THE INFORMATION CONTAINED HEREIN, AND THE SAME IS SUBMITTED SUBJECT TO ERRORS, OMISSIONS, CHANGE OF PRICE, RENTAL OR OTHER CONDITIONS, PRIOR SALE, LEASE OR FINANCING, OR WITHDRAWAL WITHOUT NOTICE, AND OF ANY SPECIAL LISTING CONDITIONS IMPOSED BY OUR PRINCIPALS NO WARRANTIES OR REPRESENTATIONS ARE MADE AS TO THE CONDITION OF THE PROPERTY OR ANY HAZARDS CONTAINED THEREIN ARE ANY TO BE IMPLIED. OUTLINES ARE APPROXIMATE AND SHOWN ONLY TO IDENTIFY THE PARCEL IN CONSIDERATION.

Availability	23,428 SF on 1.9 acres
Ceiling Height	14'8"-15'2"
Loading	(2) loading docks (1) 12'x14' drive-in doors
Columns	38' x 38'
Office	3,600 SF newly renovated
Lighting	LED, motion sensor
Outdoor storage/ Parking	Abundant parking available Large fenced outdoor storage area
HVAC	Warehouse: New Reznor gas heaters Office: Goodman 80% Furnace and 14 Seer AC System.
Power	800 amps, 480V, 3-phase
Sprinkler	Wet sprinkler
Roof	New TPO roof (2024)
Location	Located 1.3 mi from Route 130. 1.5 mi to Betsy Ross Bridge, 4.5 mi to Ben Franklin Bridge. 6.9 mi to NJ Turnpike (Exit 4) and I-295 (Exit 36)

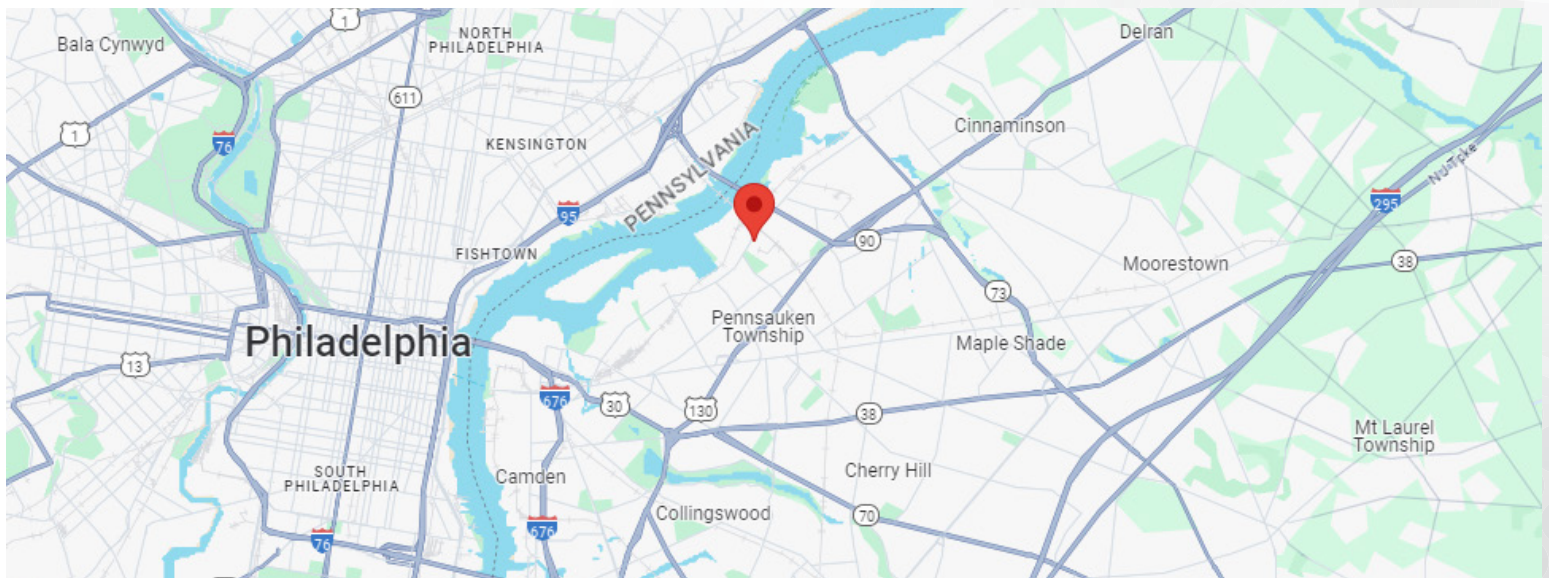


# ADDITIONAL IMAGES

6900 RIVER ROAD || PENNSAUKEN, NJ



Google Earth



## For More Information

**SCOTT MERTZ, SIOR**  
+1 609 413 5647  
scott.mertz@naimertz.com

**JONATHAN KLEAR**  
+1 856 433 1801  
jonathan.klear@naimertz.com



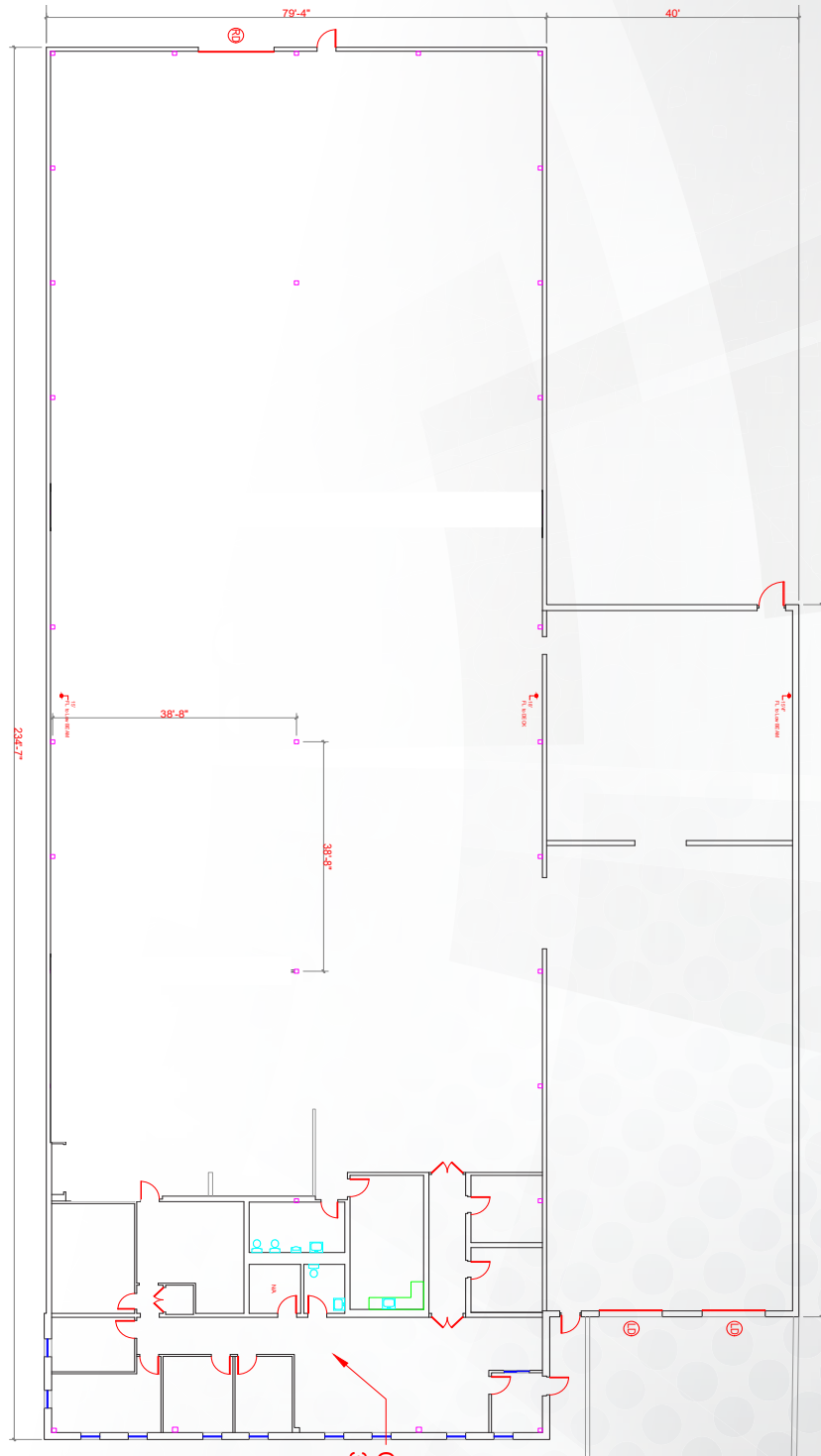
**Faropoint**

NAI MERTZ DISCLAIMER: NO WARRANTY OR REPRESENTATION, EXPRESS OR IMPLIED, IS MADE AS TO THE ACCURACY OF THE INFORMATION CONTAINED HEREIN, AND THE SAME IS SUBMITTED SUBJECT TO ERRORS, OMISSIONS, CHANGE OF PRICE, RENTAL OR OTHER CONDITIONS, PRIOR SALE, LEASE OR FINANCING, OR WITHDRAWAL WITHOUT NOTICE, AND OF ANY SPECIAL LISTING CONDITIONS IMPOSED BY OUR PRINCIPALS NO WARRANTIES OR REPRESENTATIONS ARE MADE AS TO THE CONDITION OF THE PROPERTY OR ANY HAZARDS CONTAINED THEREIN ARE ANY TO BE IMPLIED. OUTLINES ARE APPROXIMATE AND SHOWN ONLY TO IDENTIFY THE PARCEL IN CONSIDERATION.



# FLOORPLAN

6900 RIVER ROAD || PENNSAUKEN, NJ



## For More Information

**SCOTT MERTZ, SIOR**  
+1 609 413 5647  
scott.mertz@naimertz.com

**JONATHAN KLEAR**  
+1 856 433 1801  
jonathan.klear@naimertz.com



**Faropoint**

NAI MERTZ DISCLAIMER: NO WARRANTY OR REPRESENTATION, EXPRESS OR IMPLIED, IS MADE AS TO THE ACCURACY OF THE INFORMATION CONTAINED HEREIN, AND THE SAME IS SUBMITTED SUBJECT TO ERRORS, OMISSIONS, CHANGE OF PRICE, RENTAL OR OTHER CONDITIONS, PRIOR SALE, LEASE OR FINANCING, OR WITHDRAWAL WITHOUT NOTICE, AND OF ANY SPECIAL LISTING CONDITIONS IMPOSED BY OUR PRINCIPALS NO WARRANTIES OR REPRESENTATIONS ARE MADE AS TO THE CONDITION OF THE PROPERTY OR ANY HAZARDS CONTAINED THEREIN ARE ANY TO BE IMPLIED. OUTLINES ARE APPROXIMATE AND SHOWN ONLY TO IDENTIFY THE PARCEL IN CONSIDERATION.