

# BLOOMINGDALE

TRADE CENTER

AT PORT OF SAVANNAH



651 BLOOMINGDALE ROAD, BLOOMINGDALE, GA



AVAILABLE

# 482,755 SF

Ideally situated between I-95 and I-16 with direct parkway access to the fastest growing port in the nation, Bloomingdale Trade Center adds speed and efficiency to your growing business.

**DENTON SHAMBURGER**

Senior VP Industrial  
dshamburger@lpc.com  
404.266.7611

**COLIN BEECHAM**

Vice President  
cbeecham@lpc.com  
404.990.4169

**STEPHEN EZELLE, SIOR**

Partner  
sezelle@gilbertezelle.com  
912.441.3083

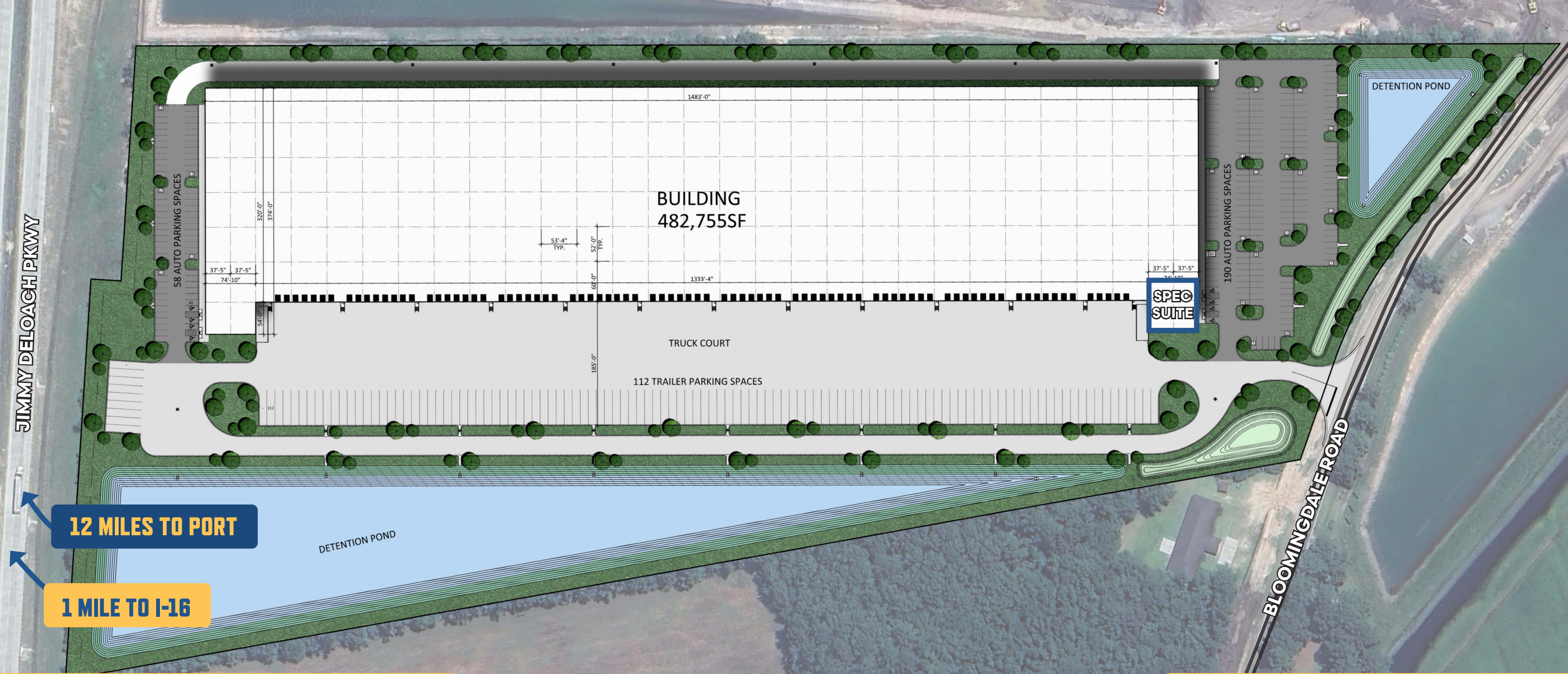
**CROW HOLDINGS**  
CAPITAL



**GILBERT & EZELLE**

**Lincoln**





**12 MILES TO PORT**

**1 MILE TO I-16**

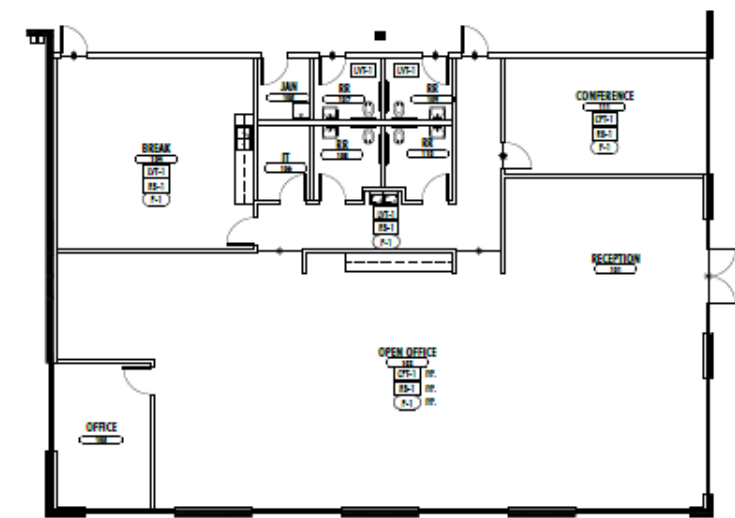
## BUILDING SPECIFICATIONS

|                                |                                |
|--------------------------------|--------------------------------|
| <b>TOTAL SQUARE FOOTAGE:</b>   | 482,755 SF                     |
| <b>OFFICE SQUARE FOOTAGE:</b>  | +/- 3,500 SF Spec Office       |
| <b>DOCK HIGH DOORS:</b>        | 84 (42 w/ 40k lb Pit Levelers) |
| <b>DRIVE-IN DOORS:</b>         | 2                              |
| <b>TRAILER STORAGE SPACES:</b> | 122+                           |

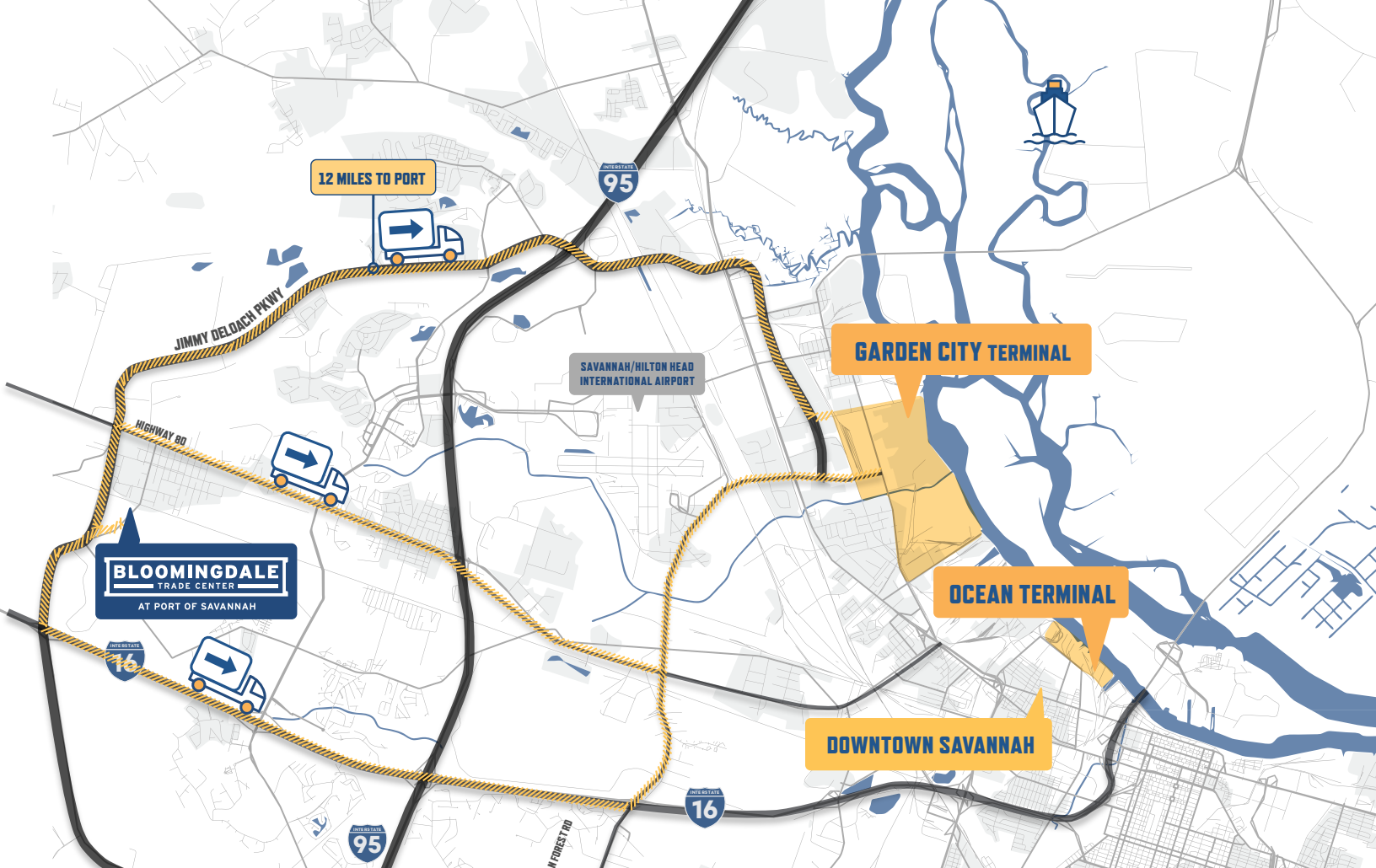
|                             |                              |
|-----------------------------|------------------------------|
| <b>AUTO PARKING SPACES:</b> | 248                          |
| <b>CLEAR HEIGHT:</b>        | 36'                          |
| <b>BUILDING DEPTH:</b>      | 320'                         |
| <b>COLUMN SPACING:</b>      | 53'w x 52'd (60' speed bays) |
| <b>CONFIGURATION:</b>       | Front Load                   |

|                        |                  |
|------------------------|------------------|
| <b>SPRINKLER TYPE:</b> | ESFR             |
| <b>LIGHTING TYPE:</b>  | LED              |
| <b>ELECTRICAL:</b>     | 3000 AMPS        |
| <b>SLAB:</b>           | 7" Slab on Grade |
| <b>ROOF:</b>           | R-20, 60-Mil     |

## SPEC OFFICE FLOORPLAN







## DRIVE TIMES

**1 MILE**

I-16

**5 MILES**

I-95

**6 MILES**

SAVANNAH/HILTON HEAD INTERNATIONAL AIRPORT

**12 MILES**

PORT WENTWORTH

**17 MILES**

DOWNTOWN SAVANNAH

**230 MILES**

HARTSFIELD JACKSON INTERNATIONAL AIRPORT  
ATLANTA, GA

**353 MILES**

CHATTANOOGA, TN



**Lincoln**

**DENTON SHAMBURGER**

Senior VP Industrial  
dshamburger@lpc.com  
404.266.7611

**COLIN BEECHAM**

Vice President  
cbeecham@lpc.com  
404.990.4169

**STEPHEN EZELLE, SIOR**

Partner  
sezelle@gilbertezelle.com  
912.441.3083

**CROW HOLDINGS**  
CAPITAL

**CUSHMAN & WAKEFIELD**

**GILBERT & EZELLE**