

FOR SALE

±1.96 ACRE - GRADED PARCEL

Illinois Ave & Trumble Rd, Romoland, CA



**FINISHED ±1.96 NET ACRE PAD
(PAR 10 OF PM 34082)**

(CC-PD) ZONING

Property Features

- Approved for ±10,843 SF Building Pad
- All Commercial Neighborhood (CN) permitted uses allowed
- Over 130,000 SF Built and Stabilized
- Owner-User or Investor Opportunity
- Excellent Freeway Visibility
- Easy Access to I-215 (cars per day: 72,000)
- Possible Built to Suit

INVESTOR DEVELOPMENT OPPORTUNITY

ANDY SHIRK

Vice President

909.545.8009

Lic. #00881302

ashirk@voitco.com

3280 E. Guasti Road, Suite 100, Ontario, CA 91761 • 909.545.8000 • 909.354.3253 Fax • Lic #01991785 | www.VoitCo.com

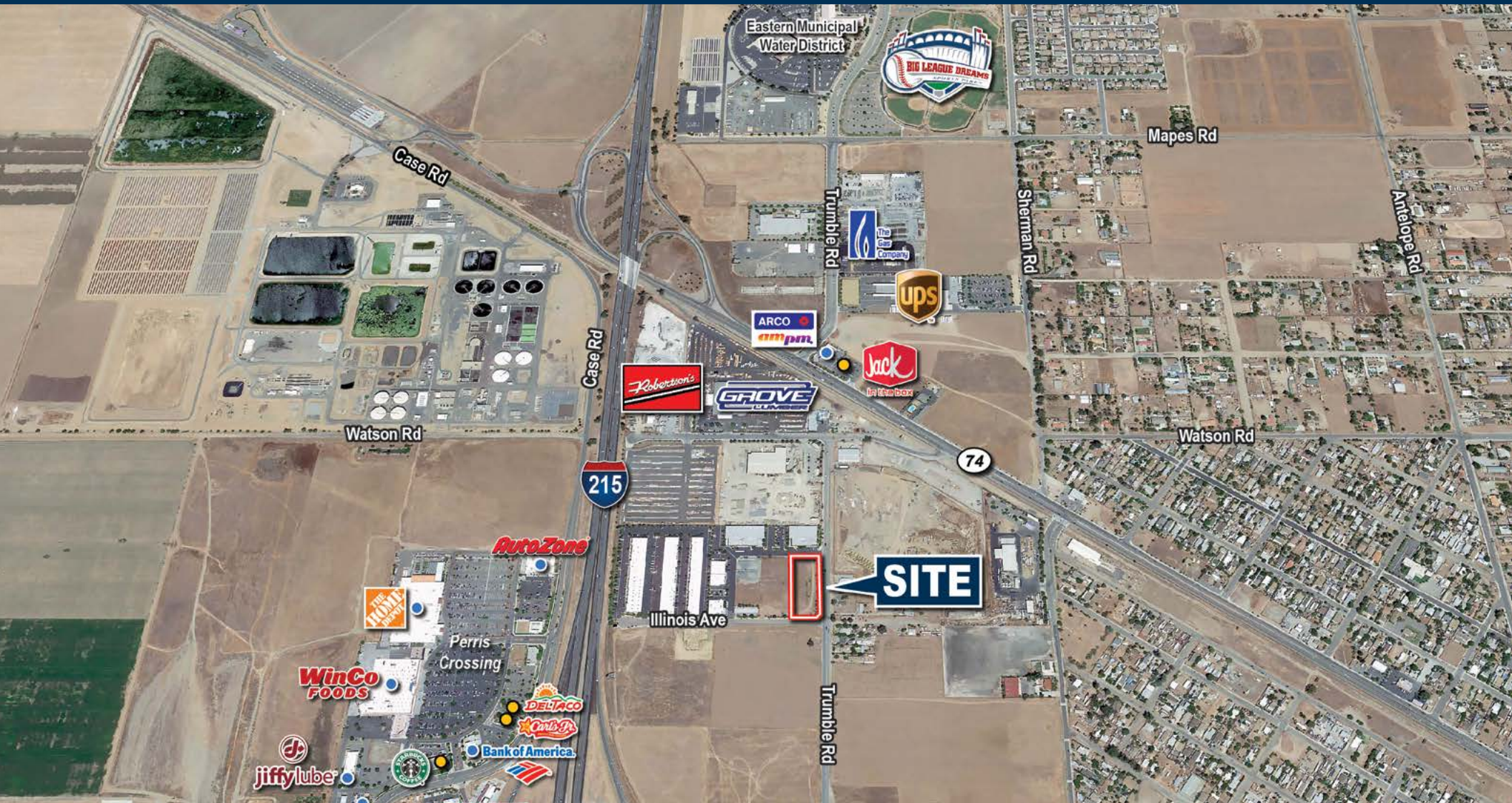
Voit

REAL ESTATE SERVICES

FOR SALE

±1.96 ACRE - GRADED PARCEL

Illinois Ave & Trumble Rd, Romoland, CA



ANDY SHIRK
Vice President
909.545.8009
Lic. #00881302
ashirk@voitco.com

Voit
REAL ESTATE SERVICES