

# OFFICE SPACE FOR LEASE



**MAITLAND GREEN I**  
601 S. Lake Destiny Drive  
Maitland, FL 32751

Maitland Green I is a 4-story Class A office building with approximately 111,000 RSF and available space ranging from 2,625-7,149 RSF.

Located in the highly desirable Maitland Center Office Park, this corporate building provides efficient office suites.

[Virtual Tour](#)

[Drone Video](#)



**CLASS A  
OFFICE SPACE**

Space Available  
**2,625-7,149 RSF**

Total Space Available  
**15,579 RSF**



For more information, contact:  
[Damien Madsen](#)  
(407) 256.2844  
[DMadsen@harbertrealty.com](mailto:DMadsen@harbertrealty.com)

[Josh Smith, SIOR](#)  
(407) 739.8602  
[JSmith@harbertrealty.com](mailto:JSmith@harbertrealty.com)

Property Owned &  
Operated by:



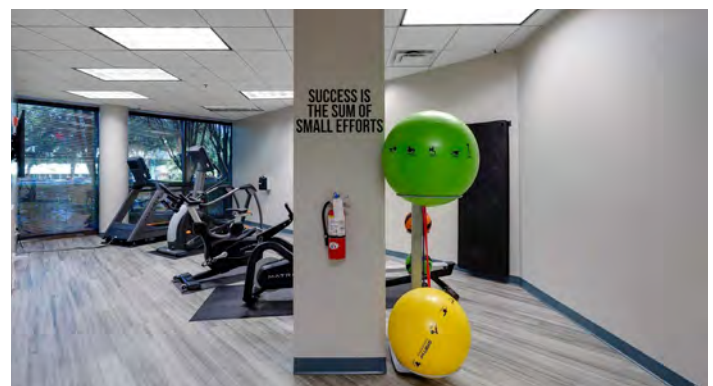
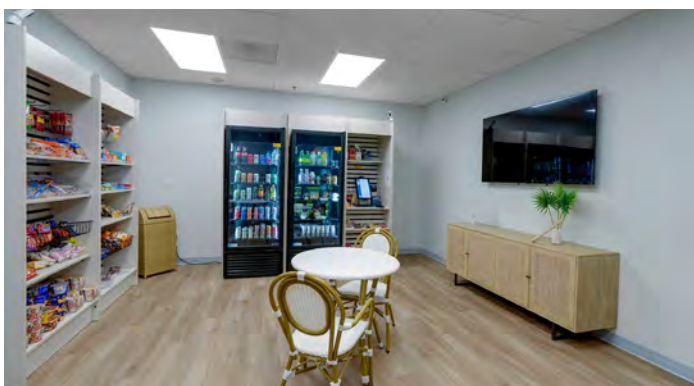
## SPACE AVAILABLE

Suite	RSF
125	7,149
250	2,625 (avail. 5/1/26)
400A	5,805



## BUILDING FEATURES & AMENITIES

- 111,000 RSF Class A 4-Story Building
- On-Site Institutional Property Management
- 4/1000 Parking Ratio
- Brand New Fitness Facility
- Building Grab-N-Go Cafe
- Large Centrally Located Courtyard



For more information, contact:  
**Damien Madsen**  
 (407) 256.2844  
 DMadsen@harbertrealty.com

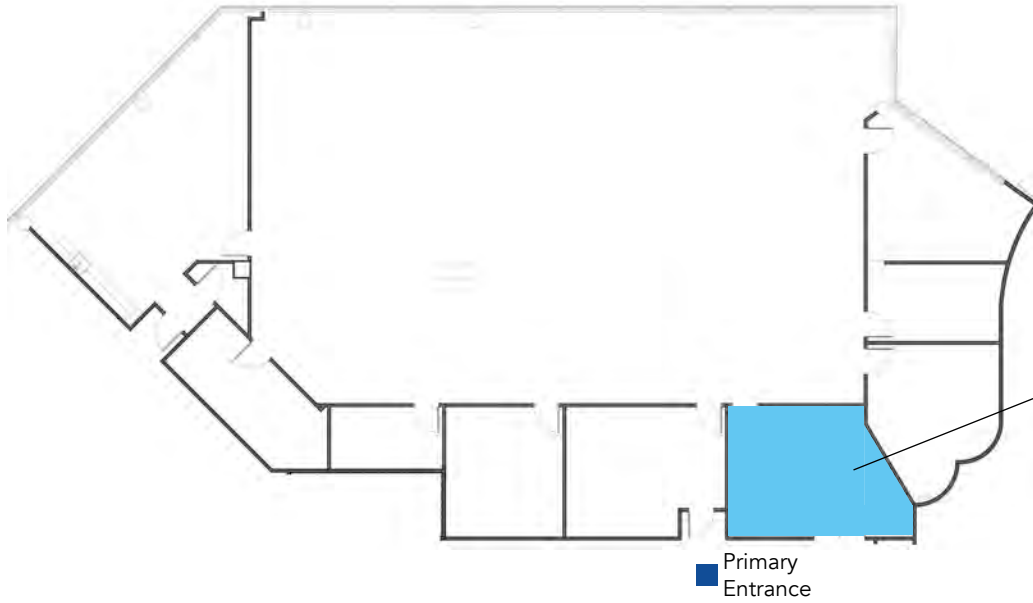
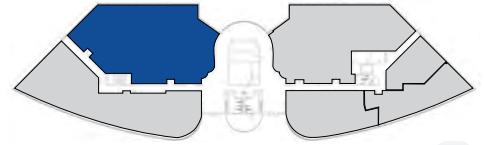
**Josh Smith, SIOR**  
 (407) 739.8602  
 JSmith@harbertrealty.com

Property Owned &  
 Operated by:



1st  
Floor

Suite 125: 7,149 RSF



Grab-and-Go Station

For more information, contact:  
[Damien Madsen](#)  
(407) 256.2844  
DMadsen@harbertrealty.com

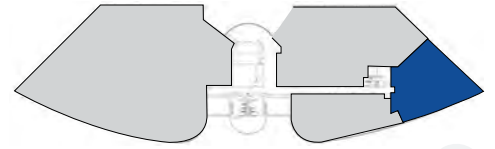
[Josh Smith, SIOR](#)  
(407) 739.8602  
JSmith@harbertrealty.com

Property Owned &  
Operated by:



2nd  
Floor

Suite 250: 2,625 RSF



For more information, contact:  
**Damien Madsen**  
(407) 256.2844  
DMadsen@harbertrealty.com

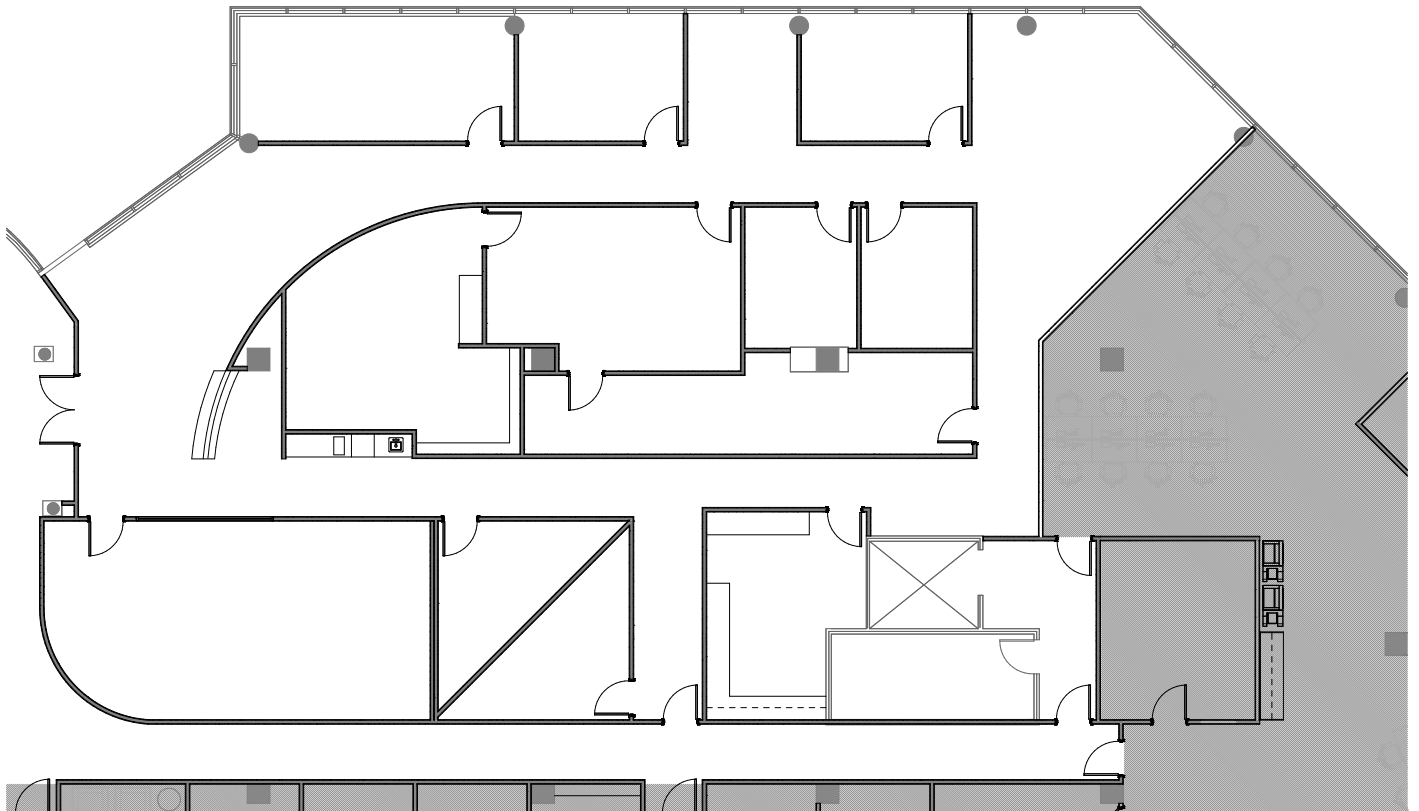
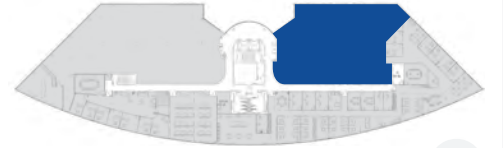
**Josh Smith, SIOR**  
(407) 739.8602  
JSmith@harbertrealty.com

Property Owned &  
Operated by:



4th  
Floor

Suite 400A: 5,805 RSF

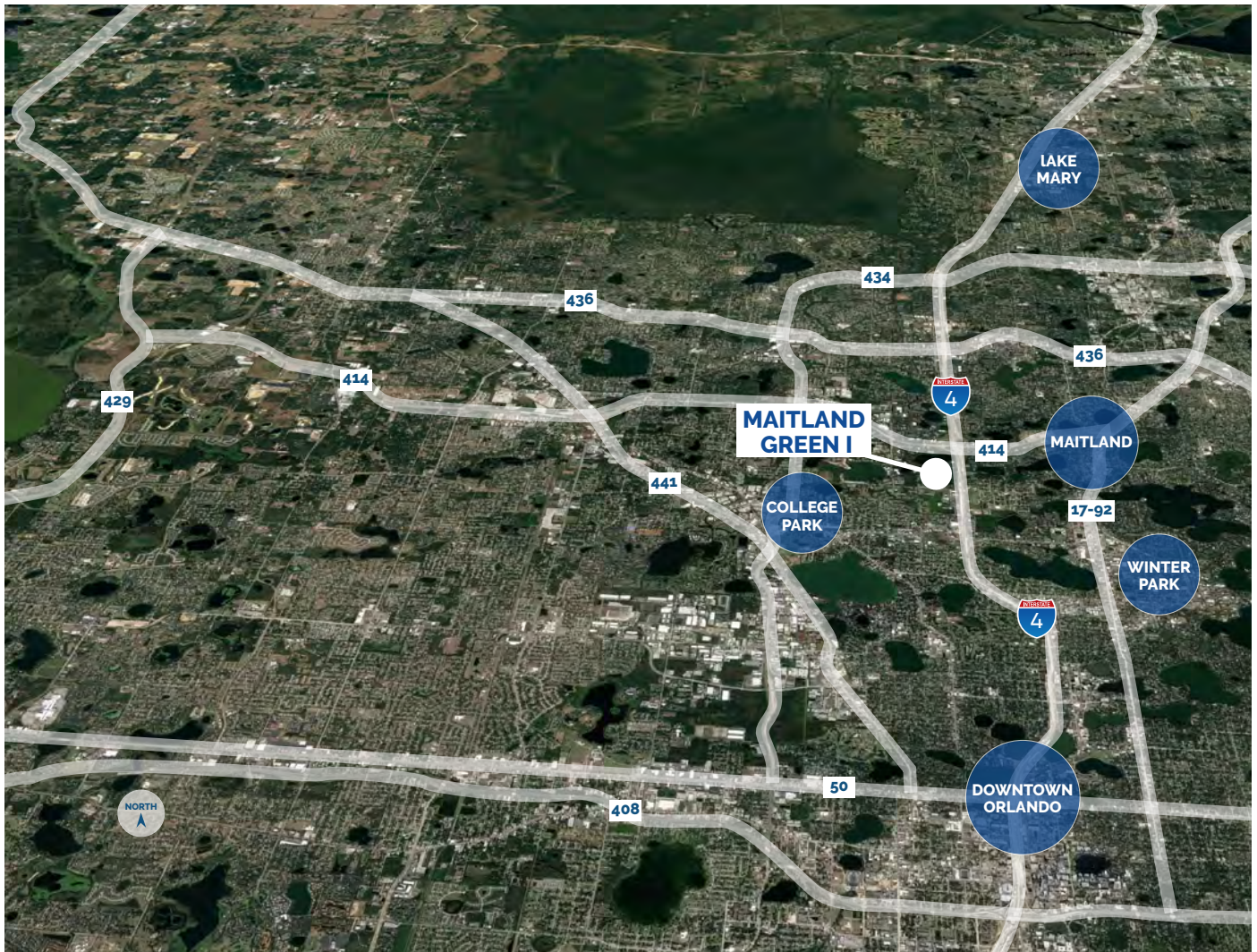


For more information, contact:  
**Damien Madsen**  
(407) 256.2844  
DMadsen@harbertrealty.com

**Josh Smith, SIOR**  
(407) 739.8602  
JSmith@harbertrealty.com

Property Owned &  
Operated by:





## LOCATION HIGHLIGHTS

- Well-positioned within Maitland Center Office Park, one of Orlando's largest office submarkets
- Conveniently less than a half mile from I-4 & providing easy access to Downtown Orlando
- Close to business hotels, restaurants, retail and the RDV Sportsplex
- Ideally located in Central Florida's top executive housing market & the following established neighborhoods
  - Maitland: 3-Miles
  - Winter Park: 5-Miles
  - College Park: 7-Miles
  - Downtown: 8-Miles
  - Lake Mary: 12-Miles

For more information, contact:  
**Damien Madsen**  
 (407) 256.2844  
 DMadsen@harbertrealty.com

**Josh Smith, SIOR**  
 (407) 739.8602  
 JSmith@harbertrealty.com

Property Owned &  
 Operated by:

