



# Plant City SR 39 Commercial Opportunity

2900 James L Redman Pkwy, Plant City, Florida 33566

Jerrod Parker  
813-967-2862  
[jerrod@saundersrealestate.com](mailto:jerrod@saundersrealestate.com)



## TABLE OF CONTENTS



## Table of Contents

Property Information	3
Property Summary	4
Location Description	5
Location Information	6
Regional Map	7
Location Map	8
Aerial	9
Aerial	10
Assemblage Map (23 ± Acres)	11
Assemblage Aerial	12
Demographics Map & Report	13
Area Analytics	14
County	15
Maps And Photos	16
Neighborhood Map	17
Market Area Map	18
Additional Photos	19
Agent And Company Info	20
Advisor Biography	21

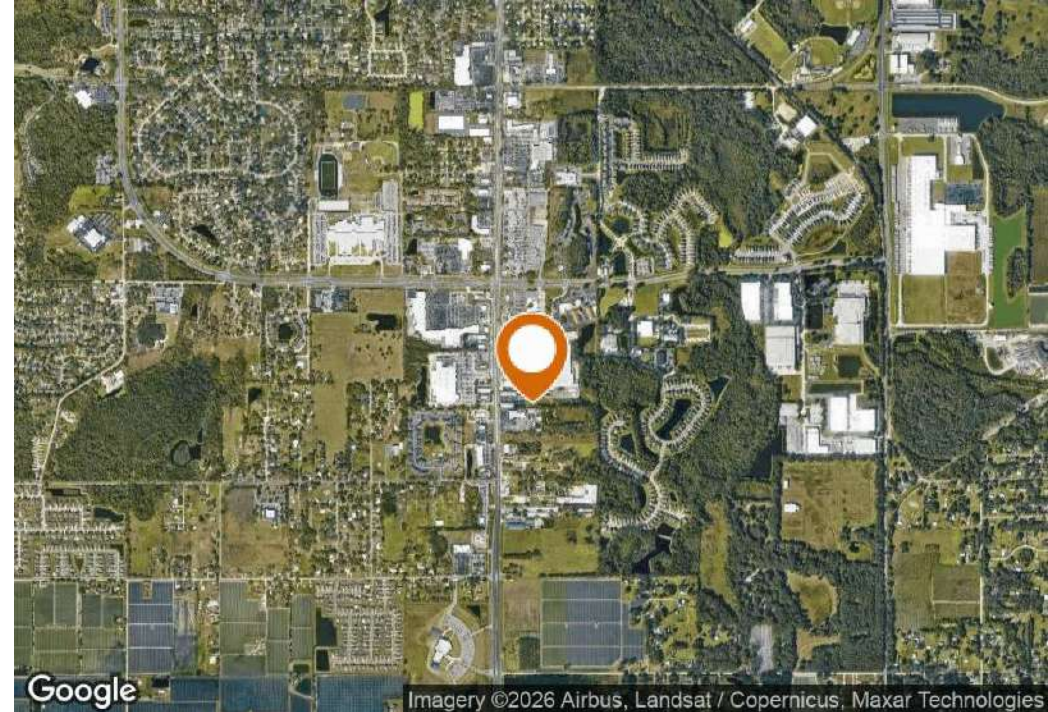




SECTION 1

# Property Information





## Offering Summary

Sale Price:	\$7,500,000
Building Size:	29,669 SF
Lot Size:	10.5 Acres
Year Built:	1972
Zoning:	C-1
City:	Plant City
County:	Polk
PIN:	205160.2870

## Property Overview

Presenting a prime investment opportunity in Plant City, FL, this property boasts a 27,669 SF building, ideal for Retail and Street Retail investors. Built in 1972 and zoned C-1, this well-positioned property offers ample potential for a range of retail ventures along State Road 39 (James L Redman Pkwy). With a strategic location in the Plant City area, this property provides excellent visibility and access for businesses. Its versatile layout and zoning offer a wide array of possibilities for retail expansion and growth. Don't miss the chance to capitalize on this promising investment with significant potential for success in the thriving Plant City market.

There are two adjacent properties for sale, allowing for an assemblage opportunity of approximately 23 ± acres. Please refer to the assemblage map in the pages below. For more information, please reach out to the listing agent.

## Property Highlights

- 27,669 ± SF retail building on State Road 39 (James L Redman Pkwy)
- Zoned C-1
- Strategic location in Plant City area
- Versatile layout ideal for street retail or redevelopment



## LOCATION DESCRIPTION



### Bustling Commercial Corridor Off SR 39

Situated in the heart of Plant City, FL, this vibrant area presents an exceptional opportunity for Retail and Street Retail investors. Known for its growing community and diverse attractions, the area is home to the popular Florida Strawberry Festival and offers a unique blend of historical charm and modern amenities. Nearby, the historic downtown district boasts an array of enticing shops and eateries. With a steadily increasing population and a thriving commercial scene, this location is perfect for investors seeking to capitalize on the area's ongoing growth and development.

The property sits along a bustling commercial corridor, home to a variety of national and regional retailers. Nearby establishments include Lowe's Home Improvement, Walmart Supercenter, and Publix, providing a steady flow of consumer traffic. Additionally, the property is in close proximity to other retail centers and dining options, enhancing its appeal for commercial use. The property's frontage on State Road 39 (James L Redman Pkwy) ensures high exposure, and its location within a vibrant retail hub makes it an attractive site for businesses seeking to capitalize on the area's commercial activity.



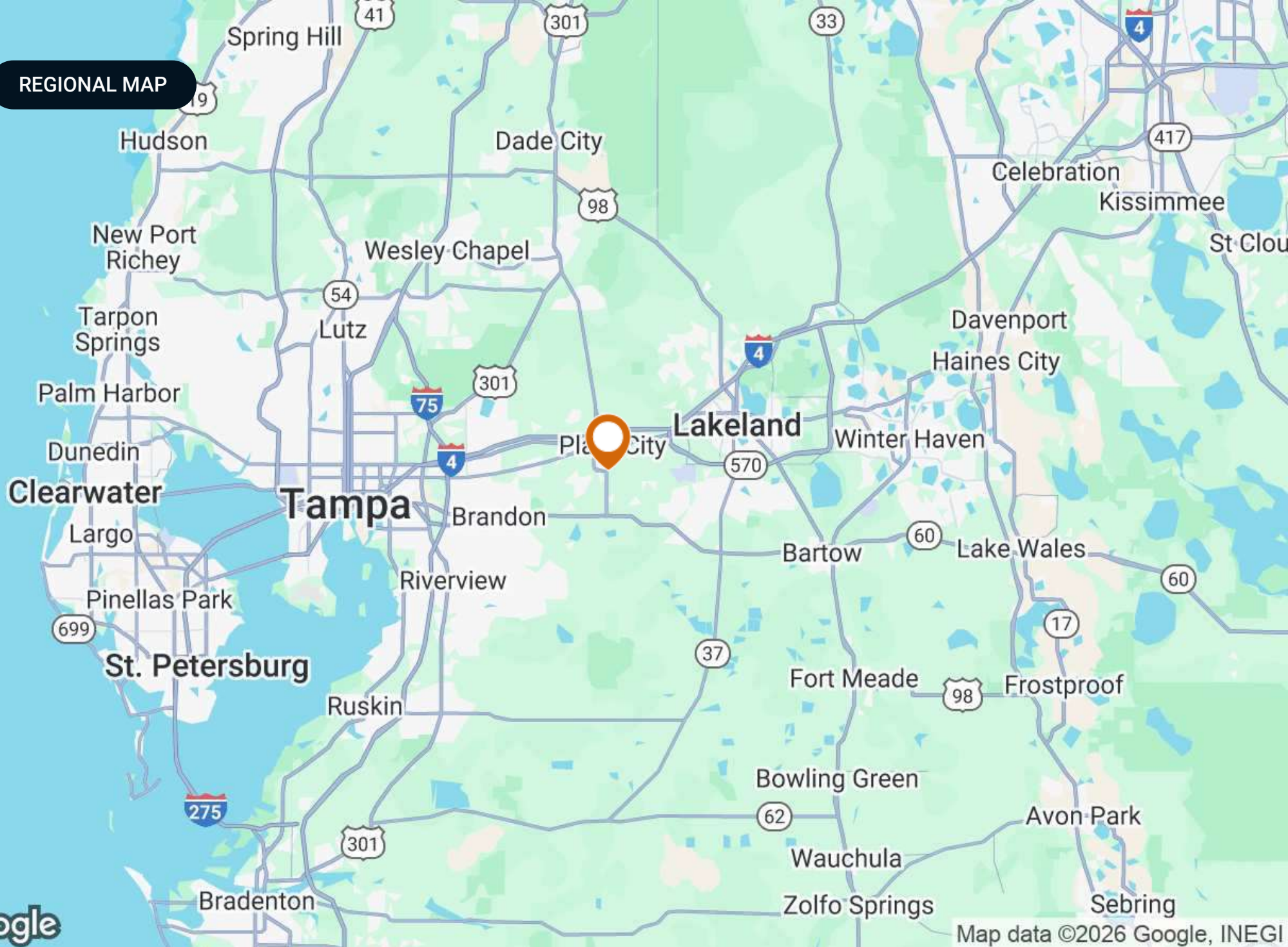


SECTION 2

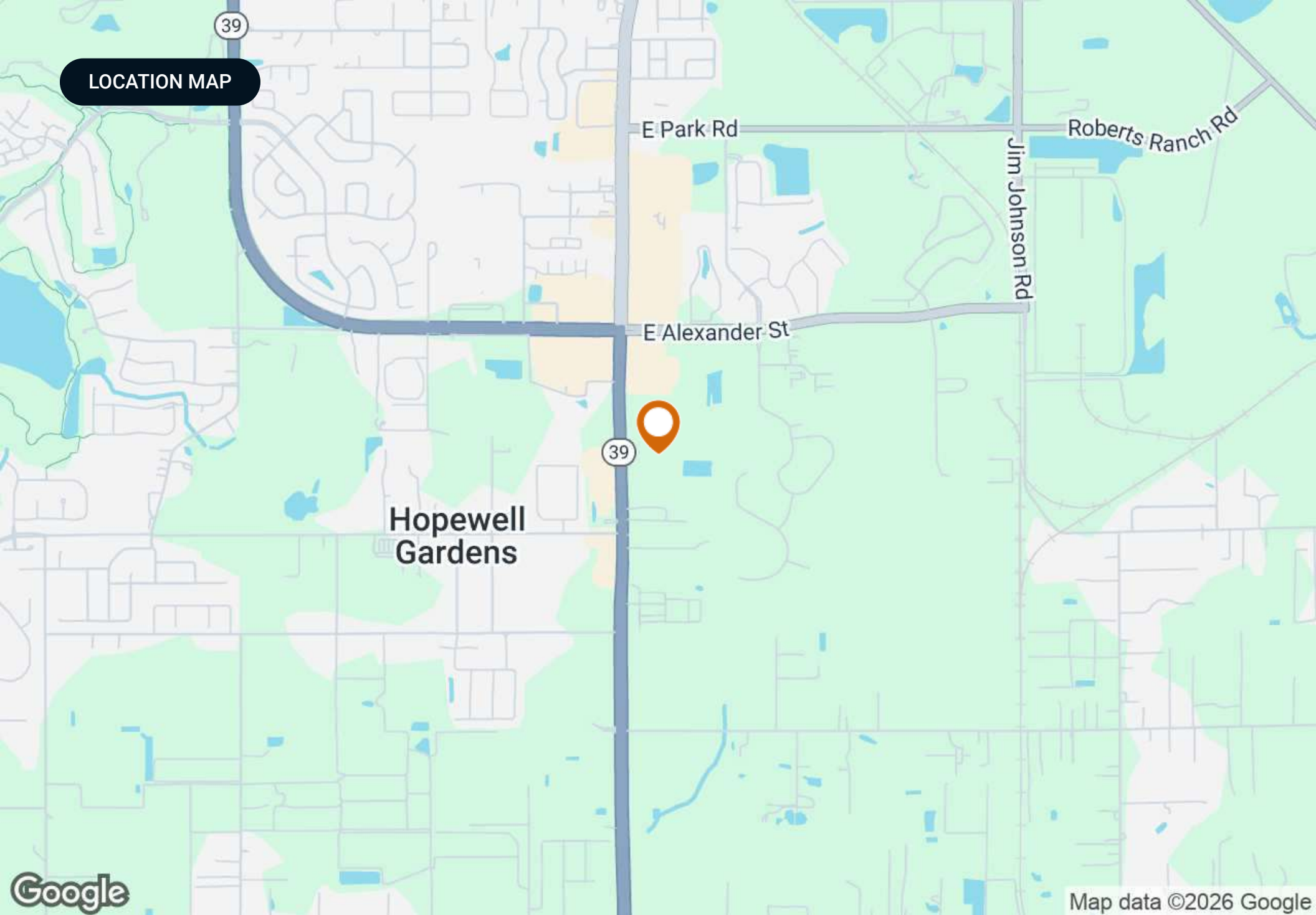
# Location Information



REGIONAL MAP



LOCATION MAP





AERIAL





AERIAL



Pointe Grand Apartments  
252 Multifamily Units  
(Completed in 2024)

HCA Florida  
Healthcare



25,500 ±  
Cars/Day

Panera  
BREAD



Great Clips

verizon

MIDFLORIDA

ZAXBY'S



SONIC  
America's Drive-In

James L Redman Pkwy



ASSEMBLAGE MAP (23 ± ACRES)

James L Redman Pkwy



## ASSEMBLAGE AERIAL





## DEMOGRAPHICS MAP & REPORT

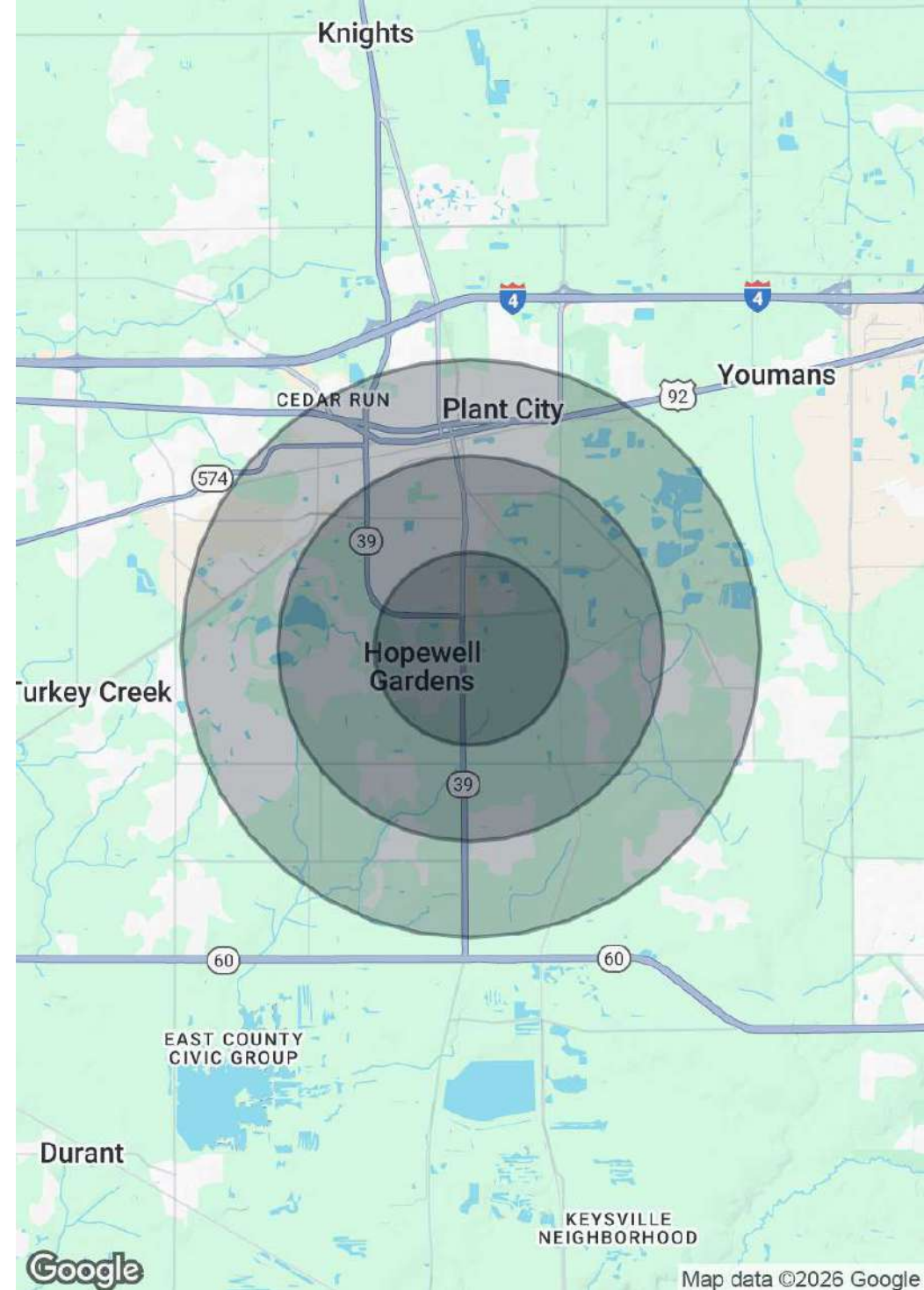
### Population

	1 Mile	2 Miles	3 Miles
Total Population	5,276	18,575	39,093
Average Age	36	37	38
Average Age (Male)	35	36	37
Average Age (Female)	37	38	39

### Households & Income

	1 Mile	2 Miles	3 Miles
Total Households	1,729	6,316	13,254
# of Persons per HH	3.1	2.9	2.9
Average HH Income	\$74,318	\$79,504	\$83,791
Average House Value	\$327,272	\$304,847	\$313,518

Demographics data derived from AlphaMap











## Hillsborough County

### FLORIDA



<b>Founded</b>	1834	<b>Density</b>	1,400.5 (2019)
<b>County Seat</b>	Tampa	<b>Population</b>	1,521,410 (2023)
<b>Area</b>	1,051 sq. mi.	<b>Website</b>	<a href="https://hillsboroughcounty.org">hillsboroughcounty.org</a>

Hillsborough County is located in the west-central portion of the U.S. state of Florida. In the 2010 census, the county's population sat at 1,233,511, making it the fourth-most populous county in Florida and the state's most populous county outside the Miami Metropolitan Area. As of a 2023 estimate, the population of Hillsborough County has now grown to 1,521,410, surpassing the populations of 12 separate US states. Leading this growth, Tampa serves as the county seat and largest city in Hillsborough County. Additionally, the county is part of the Tampa–St. Petersburg–Clearwater Metropolitan Statistical Area.





SECTION 3

# Maps And Photos





## NEIGHBORHOOD MAP



## MARKET AREA MAP



Map data ©2025 Imagery ©2025 Airbus, Landsat / Copernicus, Maxar Technologies



ADDITIONAL PHOTOS







SECTION 4

# Agent And Company Info



## ADVISOR BIOGRAPHY



### Jerrod Parker

Associate Advisor

[jerrod@saundersrealestate.com](mailto:jerrod@saundersrealestate.com)

Direct: **877-518-5263 x392** | Cell: **813-967-2862**

## Professional Background

Jerrod Parker is an Associate Advisor at Saunders Real Estate, operating out of the Lakeland headquarters while focusing on the Central Florida region.

Jerrod is also a 7th generation Floridian. He and his family are well known in the Pasco, Hillsborough, Polk, and Hardee Counties. Jerrod's father is the Director of The Florida Strawberry Growers Association and his grandfather was on the Hillsborough County School Board for over twenty years. Additionally, members of his immediate family are active board members for the Florida Strawberry Festival.

After receiving his bachelor's degree from Florida Southern College, Jerrod started his career in Hillsborough County's public school education system. He later entered the agricultural industry where he provided client services as a Certified Crop Advisor to an array of different farmers and ranchers across Central Florida.

Now, living in Polk County, Jerrod mainly focuses on public infrastructure development for schools, fire stations, and police stations. He is an active participant in the Polk County community as a member of the Northeast Polk Chamber of Commerce, Haines City Rotary Club, and the Central Florida Development Council.

Jerrod specializes in:

- Public Infrastructure
- Commercial Development Properties
- Farmland
- Investment Properties
- Central Florida





**SAUNDERS**  
REAL ESTATE



**SAUNDERS**  
LAND



**SAUNDERS**  
COMMERCIAL

## Serving the Southeast

At Saunders Real Estate, we deliver full-service real estate solutions across the Southeast, built on more than 30 years of trusted experience. Our dedicated teams—experts in both land and commercial real estate—offer tailored guidance backed by deep regional insight and a proven track record. We believe that successful outcomes start with strong relationships built on trust and a shared commitment to your goals.



877-518-5263 • [info@saundersrealestate.com](mailto:info@saundersrealestate.com)