



UC San Diego Restaurant Space For Sale

UC San Diego Campus, La Jolla

2nd Generation
Restaurant Space

Existing Alcohol
License / FF&E
Available



Highlights & Details

Fully fixtured premises that includes an expansive bar, fully equipped kitchen, dining room, outdoor patio and event space.

Located within the Student Center, a central hub on campus for various student services.

Simple conversion for an experienced hospitality operator to implement their own concept at a fraction of the cost.

All existing furniture, fixtures, and equipment are included.

Type 41 ABC License available – contact brokers for details.

Be a part of the exciting growth of one of California's top universities!

Building Size: +/- 2,340 SF plus 612 SF exclusive patio plus common event space

Rent: Contact Brokers

Asking Price: \$175,000

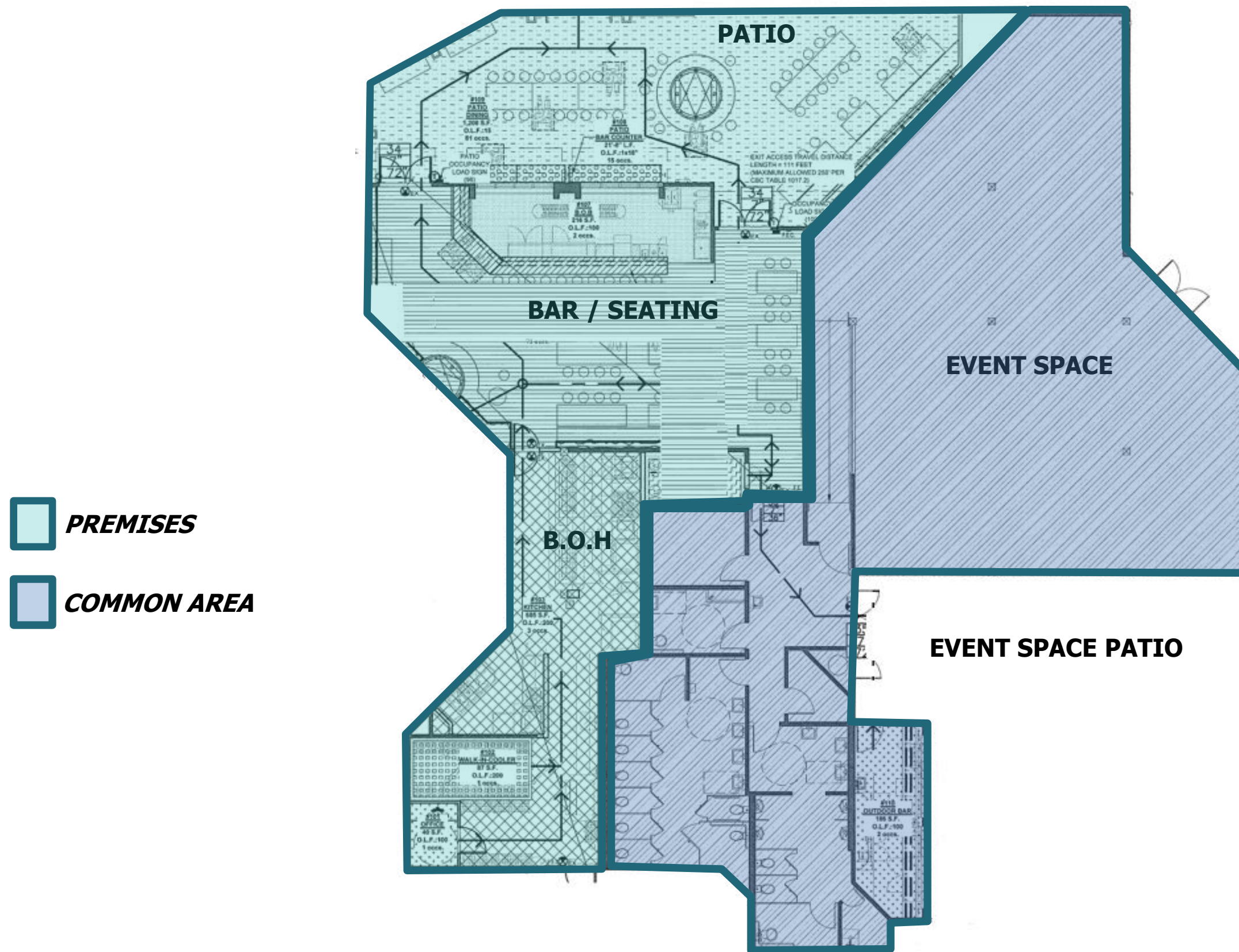




premises



premises



The University

- **Established in 1960**, UC San Diego has grown to become one of the top 15 research universities in the world.
- **Main campus is located** near the Pacific Ocean on approximately 1,200 acres of coastal woodland in La Jolla, California.
- **UC San Diego enrolls the largest number** of students among colleges and universities in San Diego County.
- **UC San Diego is the largest employer** based in San Diego County.
- **40,285 Total number** of full and part-time academic and staff employees at UC San Diego (as of Fall 2023)
- **For more than a decade**, U.S. News & World Report has included UC San Diego among the nation's top 10 public universities.
- **UC San Diego Athletics** proudly advances to the Big West NCAA Division One Conference in 2020.



The Retail Climate

- **Approximately 50,000 customers** are on-campus on a daily basis. Once on campus for the day, most people stay on campus for the day and eat on campus.
- **Student population** 43,381 (33,096 undergrad)
- **Students living on campus** are currently 22,000, projected to increase to over 27,000 by 2030.
- **Approximately 40% of students** are housed on campus. Freshman students are not allowed to have cars at school.
- **23,285 faculty and staff** work on campus, with higher disposable income than students. They represent 33% of the campus headcount daily (larger than both on campus and off campus students).
- **Faculty and Staff numbers** are projected to grow 20% by 2030.
- **Annual retail spending** for on campus students = \$5,675, students who live off campus = \$7,058, faculty and staff \$8,256
- **Blue Line Trolley** Line has increased accessibility to campus for all San Diego locals and tourists with over 2.4 Million annual rides to and from campus.



Disclaimer - This document has been prepared by Next Wave Commercial Real Estate, Inc. for advertising and general information only. The information included has been obtained from sources believed to be reliable, and while we do not doubt its accuracy, we have not verified it and make no guarantees, representations or warranties of any kind, expressed or implied, regarding the information including, but not limited to, warranties of content, accuracy and reliability. Any projections, opinions, assumptions or estimates used are for example only and do not represent the current or future performance of the property. Any interested party with their advisor(s) should conduct a careful, independent investigation of the property to determine to your satisfaction the suitability of the property for their needs.



contact

Dino De Salvio

dino@nextwavecommercial.com

CA Lic. #02035557

619.326.4400

Next Wave Commercial

6830 La Jolla Blvd. La Jolla, CA 92037

CA Lic. #02010077

