



FOR LEASE

205 - 2099 Lougheed Highway,
Port Coquitlam



For more information, please contact

Bobbi Crandall 778.773.5157

Personal Real Estate Corporation

E cbobbi@telus.net

W tullisrealty.com



OFFICE FOR LEASE

Executive Summary

DESCRIPTION

Opportunity to lease a great office space with reception, 3 offices (1 large enough for a board room) and kitchen area

LOCATION

Centrally located in Port Coquitlam on Lougheed Highway, with access to Shaughnessy Street and the heart of downtown Port Coquitlam. The subject property offers convenient access to the Tri-Cities and in close proximity to the Evergreen Skytrain. Port Coquitlam is one of the fastest growing municipalities in Metro Vancouver.

DETAILS

RENT:

Base Rent \$ 25.00 per sqft per annum
Est. Additional Rent \$ 20.36 per sqft per annum

Monthly Rent \$ 2,880.36 per month (plus GST)

ZONING:

CC-Commercial, ask agent for more details



For more information, please contact

Bobbi Crandall 778.773.5157

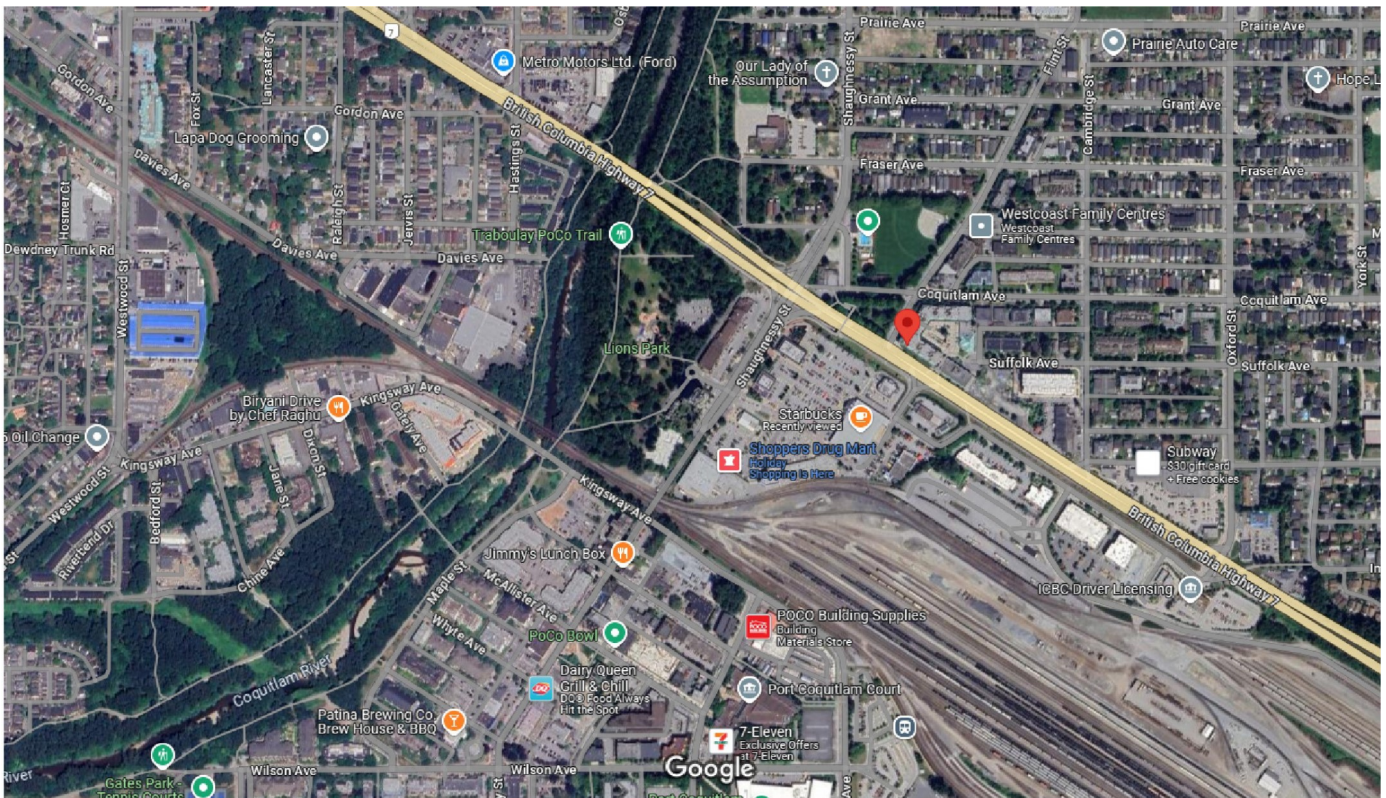
Personal Real Estate Corporation

E cbobbi@telus.net

W tullisrealty.com



OFFICE FOR LEASE



For more information, please contact

Bobbi Crandall 778.773.5157

Personal Real Estate Corporation

E cbobbi@telus.net

W tullisrealty.com

