



5601 Douglas Avenue  
Des Moines, Iowa 50310

# For sale

Office space available  
near Merle Hay Mall

**8,446 SF**

## Property overview

Availability: 8,446 RSF

Sale price: \$550,000

Lot size: 0.975 acres

Zoning: MX3 - Mixed Use District

Year built: 1940; remodeled in 1985

- Ample parking on-site
- Office buildout
- Less than 5 miles to Interstate 35
- Close proximity to Merle Hay Mall, retailers, office users, and residential neighborhoods

### Thomas Edwards

Associate

thomas.edwards@jll.com

+1 515 802 4684

### Lucas Hedstrom

Vice President

lucas.hedstrom@jll.com

+1 515 564 9269

[jll.com/des-moines](https://www.jll.com/des-moines)

Jones Lang LaSalle Americas, Inc.



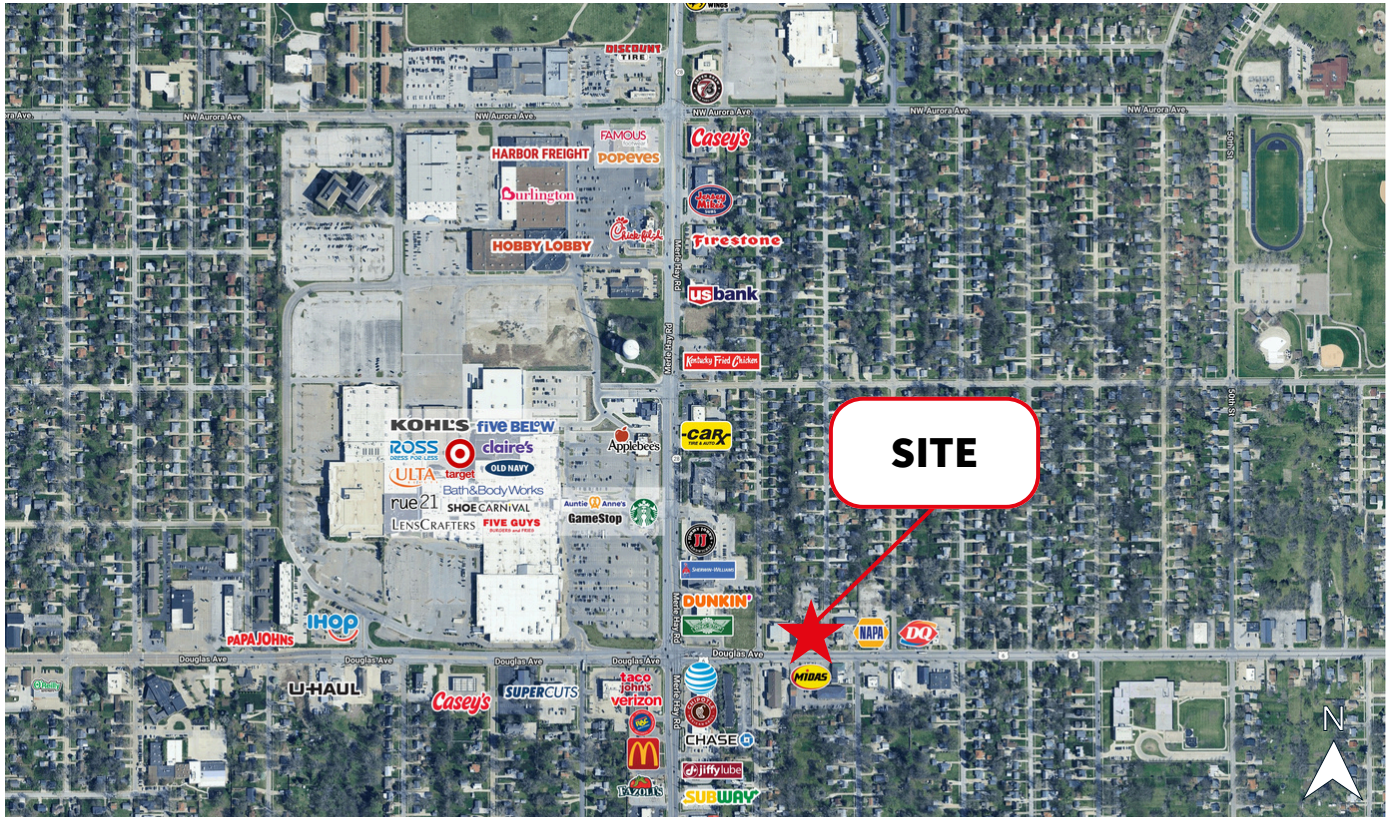
# Images





# For sale

5601 Douglas Avenue | Des Moines, IA 50310



**Thomas Edwards**  
Associate  
thoams.edwards@jll.com  
+1 515 802 4684

**Lucas Hedstrom**  
Vice President  
lucas.hedstrom@jll.com  
+1 515 564 9269

[jll.com/des-moines](http://jll.com/des-moines)  
Jones Lang LaSalle Americas, Inc.

