

THE **bramante**

103 SHORELINE PARKWAY, SAN RAFAEL, CA **BUILDING**

Monument Signage Available for a Full Floor User

±4,226 RSF DIVISIBLE TO **±2,000 RSF**
AVAILABLE FOR LEASE

\$2.50 psf Full Service, Less Interior Janitorial

NEWMARK

ALISA BELEW

415.526.7663

alisa.belew@nmrk.com

CA DRE #01821371

THE **bramante** BUILDING

location/highlights

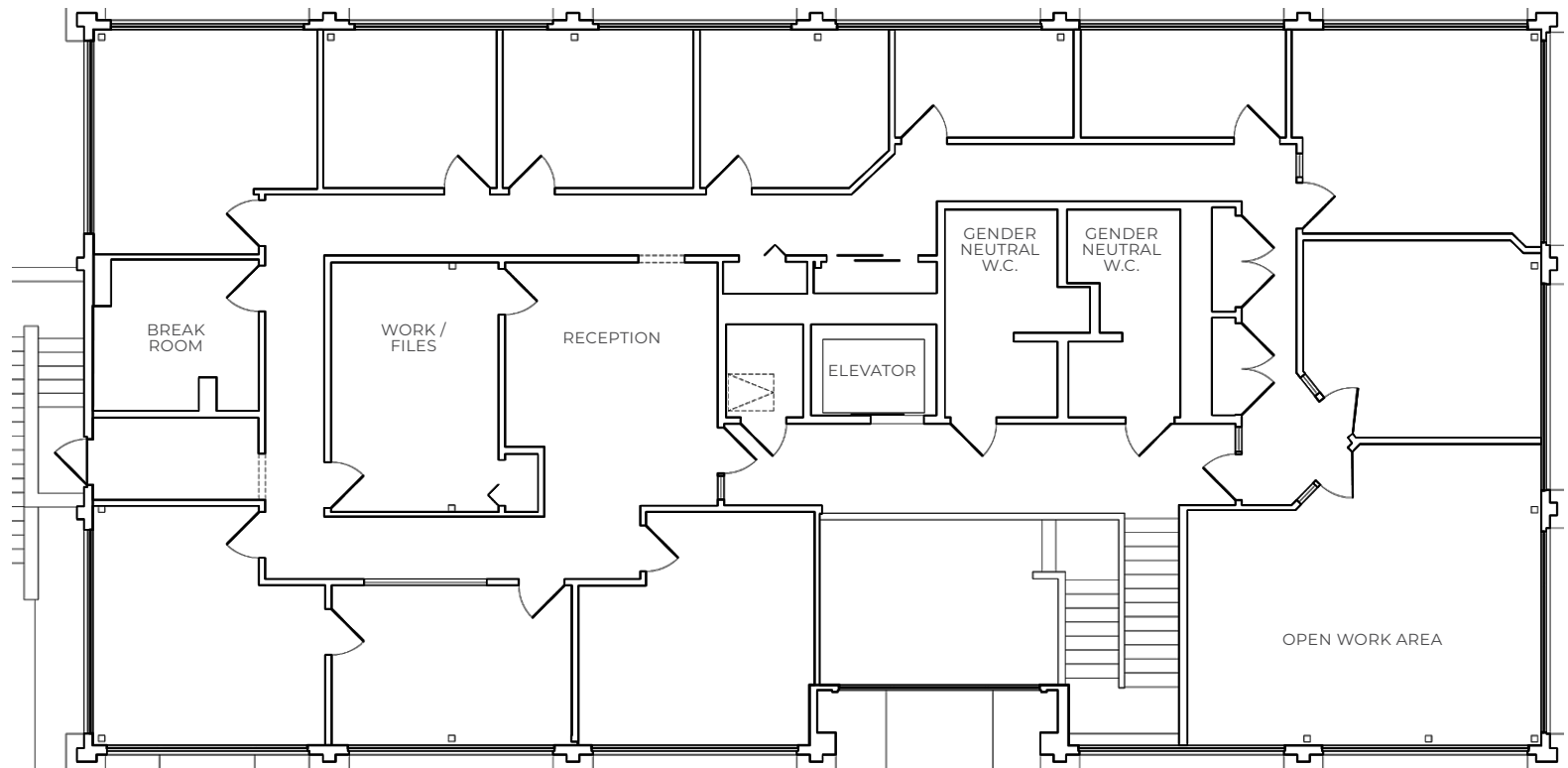


- Rare, Full Floor Opportunity
- Elevator Served
- Operable Windows, Creating Excellent Air Flow
- Professionally Maintained
- On-site Ownership
- Plentiful Parking
- Monument Signage Available
- Excellent Freeway Access



SECOND FLOOR | ±4,226 RSF | DIVISIBLE TO ±2,000 RSF

- Entire second floor available, elevator served
- Excellent natural light from window-line on all sides
- New, modern shades throughout
- Operable windows create excellent air flow
- Exclusive restrooms



gallery



THE **bramante** BUILDING

gallery



aerial



THE **bramante**

103 SHORELINE PARKWAY, SAN RAFAEL, CA **BUILDING**

ALISA BELEW
415.526.7663
alisa.belew@nmrk.com
CA DRE #01821371

1101 Fifth Avenue
Suite 370
San Rafael, CA 94901
T 415-526-7676

nmrk.com

The distributor of this communication is performing acts for which a real estate license is required. The information contained herein has been obtained from sources deemed reliable but has not been verified and no guarantee, warranty or representation, either express or implied, is made with respect to such information. Terms of sale or lease and availability are subject to change or withdrawal without notice. **20-0729** | Last Modified September 1, 2023 10:57 AM

NEWMARK