

420 STEELE STREET
IONIA, MICHIGAN

RETAIL FOR LEASE
7,503 – 15,006 Square Feet Available



**SIGNATURE
ASSOCIATES**
KNOW SIGNATURE | KNOW RESULTS

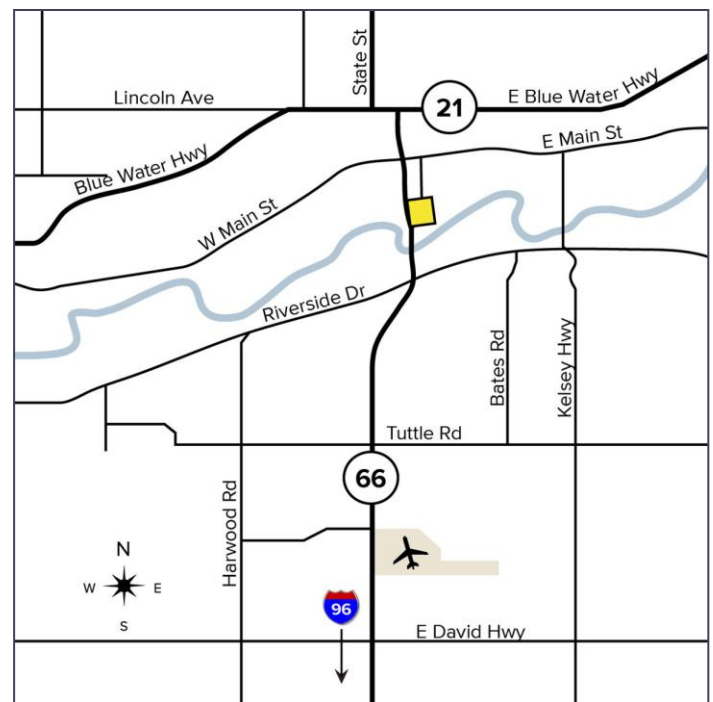
VARIETY OF USES

PRICE REDUCED



PROPERTY FEATURES

- 15,006 total building square footage
- 7,503 – 15,006 available for lease
- Located on 0.80 acres
- 10' – 16' Ceiling height
- Located on hard corner of Nash Court and Steel Street
- Zoned B-3
- Lease Rate: ~~\$10.00/sf~~ \$7.00/sf NNN
- Monthly Rate: \$4,376.75 - \$8,753.50
- Landlord has marijuana dispensary license and would work with potential Tenant
- Owner would entertain potential purchase options



For more information, please contact:

JOE RIZQALLAH
(616) 822 6310
jrizzqallah@signatureassociates.com

SIGNATURE ASSOCIATES
1188 East Paris Ave SE, Suite 220
Grand Rapids, MI 49546
www.signatureassociates.com

420 S. Steele Street – Ionia, Michigan

Retail for Lease

7,503 – 15,006
Square Feet
AVAILABLE

Aerial



For more information, please contact:

JOE RIZQALLAH
(616) 822 6310
jrizqallah@signatureassociates.com

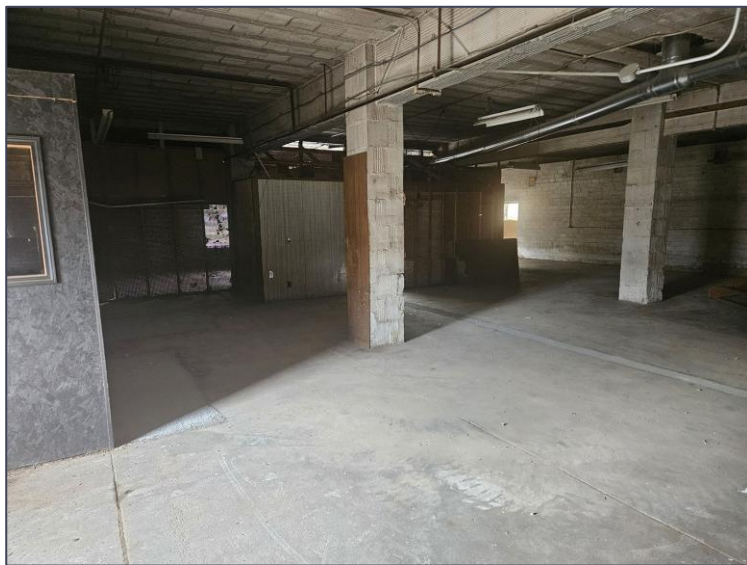
SIGNATURE ASSOCIATES
1188 East Paris Ave SE, Suite 220
Grand Rapids, MI 49546
www.signatureassociates.com

420 S. Steele Street – Ionia, Michigan

Retail for Lease

7,503 – 15,006
Square Feet
AVAILABLE

Interior Photos



For more information, please contact:

JOE RIZQALLAH
(616) 822 6310
jrizqallah@signatureassociates.com

SIGNATURE ASSOCIATES
1188 East Paris Ave SE, Suite 220
Grand Rapids, MI 49546
www.signatureassociates.com

Information is subject to verification and no liability for errors or omissions is assumed. Price is subject to change and listing withdrawal.