

FOR LEASE

30706 BRYANT DRIVE, UNIT 201, EVERGREEN, CO 80439

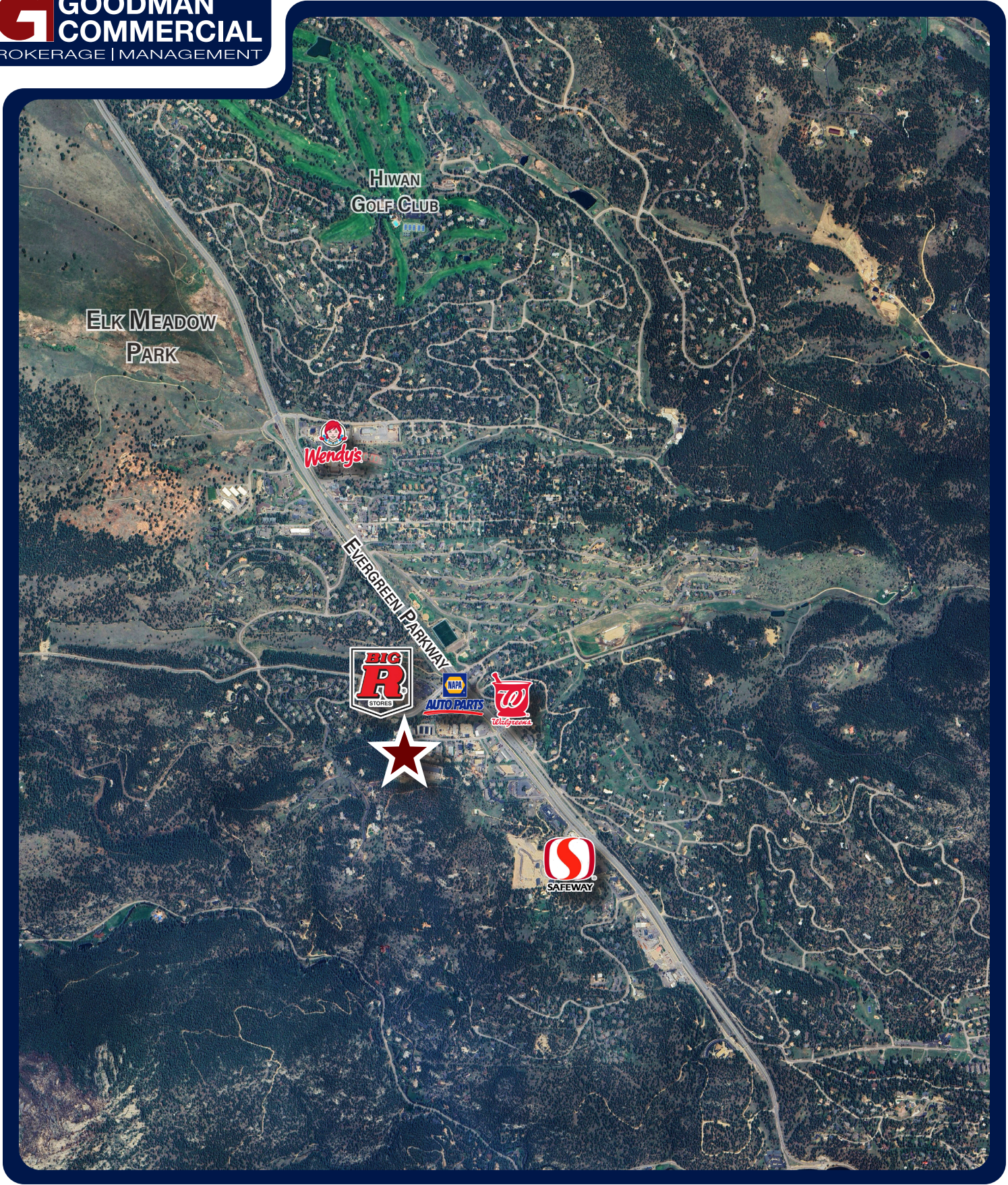


1,488 SF INDUSTRIAL DEAD STORAGE
\$1,800/MONTH FULL-SERVICE GROSS

- Sprinklered!
- Large Drive-In Door

Total Building Size:	25,104 SF
Year Built:	1999
Zoning:	PD (Jefferson County)
Loading:	110'x12' Drive-In
Total Site Size:	1.47 Acres
Clear Height:	13'





MARK GOODMAN, SIOR

mgoodman@goodmancommre.com
W 720-440-6270



DREW GOODMAN, ACoM

dgoodman@goodmancommre.com
W 720-440-6270

