

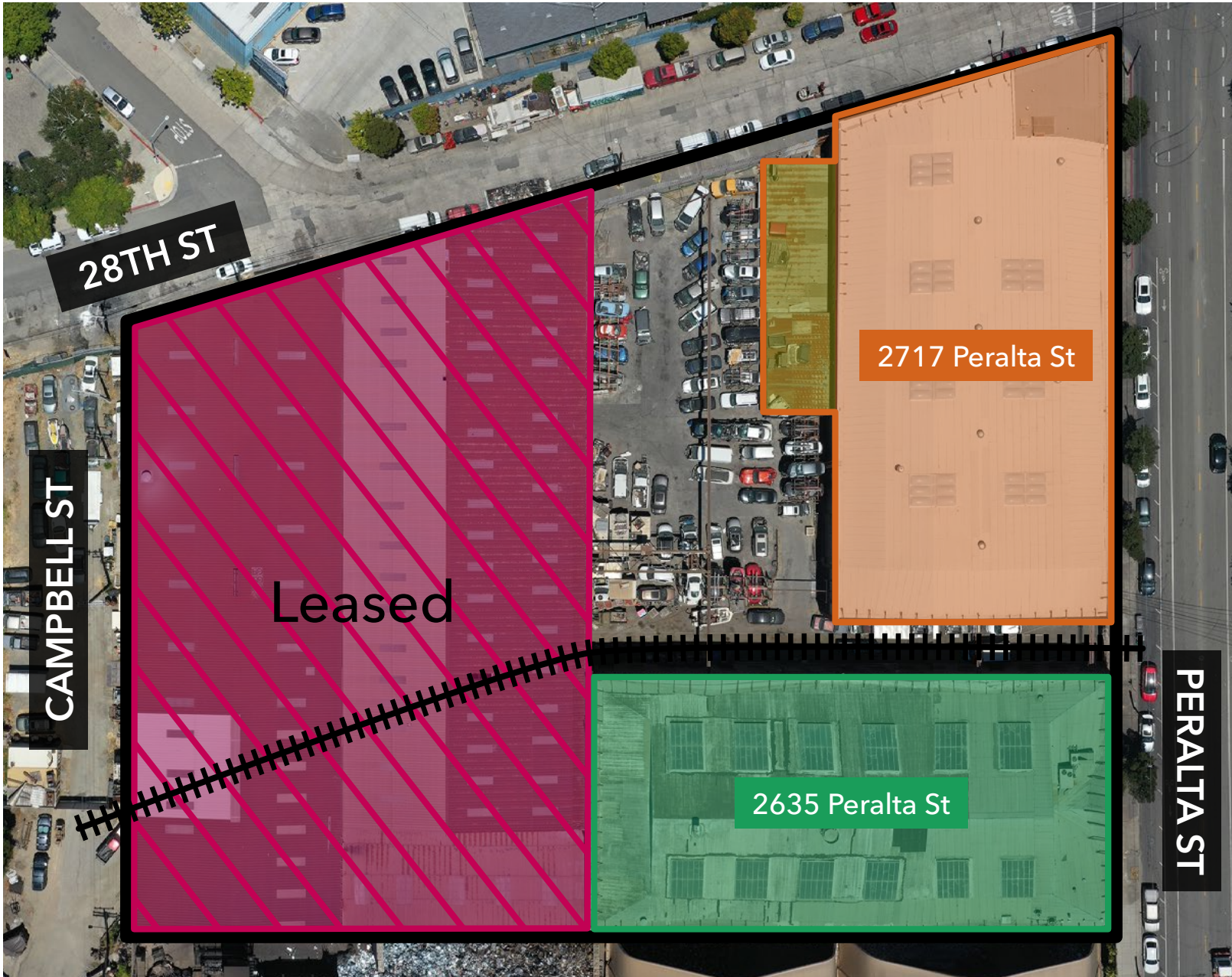


2635 & 2717 PERALTA ST, OAKLAND, CA 94607

**AVAILABLE FOR LEASE**



# PROPERTY HIGHLIGHTS



## 2635 Peralta St

- 19,500 SqFt
- 18-26' Clear Height
- 1600 Amp, 120/240 Volt, 3-Phase
- (3) 1 Ton Cranes
- (1) 2-Ton Crane
- (2) Loading Docks

## 2717 Peralta St

- 23,000 SqFt
- 20' Clear Height
- 400 Amp, 277/480 Volt, 3-Phase
- (4) 2-Ton Cranes
- (1) 1-Ton Crane
- 2,500 SqFt SHED

RR SPUR

[CIX-1A West Oakland Plan](#)  
[Area Commercial Industrial](#)  
[Mix - 1A Industrial Zone](#)  
[\(Business Enhancement\)](#)



□ ■ 2635 Peralta St





□ ■ 2717 Peralta St





□ ■ 2717 Peralta St



**JEFFREY IDA**  
Founding Principal  
E: [jjda@lee-associates.com](mailto:jjda@lee-associates.com)  
C: (415) 828-7679  
LIC: 01826381

**BRENDAN GALLAGHER**  
Founding Principal  
E: [bgallagher@lee-associates.com](mailto:bgallagher@lee-associates.com)  
C: (760) 846-1736  
LIC: 02047890

**ZACK BARNES**  
Principal  
E: [zbarnes@lee-associates.com](mailto:zbarnes@lee-associates.com)  
C: (925) 330-2198  
LIC: 01971978

