

16840 JOY ROAD  
DETROIT, MICHIGAN

LAND FOR SALE  
0.538 Acres Available



**SIGNATURE  
ASSOCIATES**  
KNOW SIGNATURE | KNOW RESULTS



## PROPERTY FEATURES

- 0.538 acres available
- Zoned B4
- Fenced paved lot
- Immediate access to Southfield Fwy (M-39)
- Sale Price: \$450,000



For more information, please contact:

**JOE STACK**  
(248) 359 0615  
jstack@signatureassociates.com

**CHRIS MONSOUR**  
(248) 948 0107  
cmonsour@signatureassociates.com

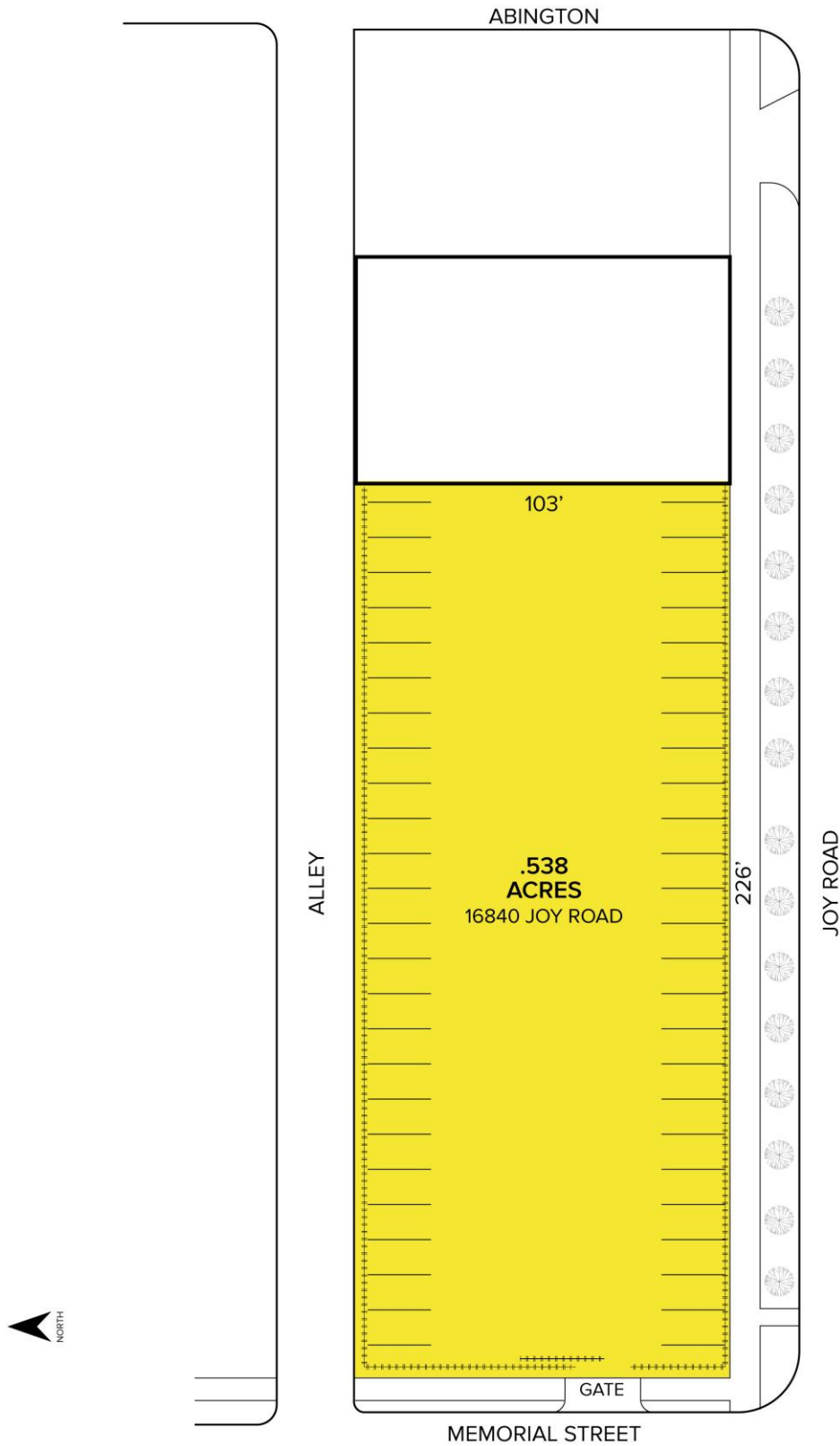
**SIGNATURE ASSOCIATES**  
One Towne Square, Suite 1200  
Southfield, MI 48076  
www.signatureassociates.com

Information is subject to verification and no liability for errors or omissions is assumed. Price is subject to change and listing withdrawal.

16840 Joy Road – Detroit, Michigan  
Land For Sale

0.538  
Acres  
AVAILABLE

Site Plan



For more information, please contact:

**JOE STACK**  
(248) 359 0615  
jstack@signatureassociates.com

**CHRIS MONSOUR**  
(248) 948 0107  
cmonsour@signatureassociates.com

**SIGNATURE ASSOCIATES**  
One Towne Square, Suite 1200  
Southfield, MI 48076  
www.signatureassociates.com

Information is subject to verification and no liability for errors or omissions is assumed. Price is subject to change and listing withdrawal.