




**Investment
Properties
Corporation**



F O R L E A S E

TARPON BAY PLAZA


 Located off Exit 111 on I-75 and Immokalee Rd

2405-2415 Tarpon Bay Blvd | Naples, FL 34119



Retail space available at one of the busiest shopping centers in Naples with approximately 3 million visits per year! Join Target, World Market, PetSmart, and other top retailers at Tarpon Bay Plaza.



CONTACT  **(239) 261-3400**

Tara Stokes, ext. 176, tara@ipcnaples.com
John Cheffy, ext. 182, john@ipcnaples.com

Investment Properties Corporation of Naples
3838 Tamiami Trail North Suite 402
Naples Florida 34103-3586

Tel: 239-261-3400 Fax: 249-261-7579 www.ipcnaples.com

Licensed Real Estate Broker

The statement and figures presented herein, while not guaranteed, are secured from sources we believe authoritative. Subject to prior sale, lease, withdrawal and price change without notice.



TARPON BAY PLAZA

2405-2415 Tarpon Bay Blvd | Naples, FL 34119

LEASE INFORMATION

SUITE	SF	PSF/YR	EST. 2024 CAM	AVAILABILITY
203	1,610 SF	Call For Details	\$7.77	IMMEDIATELY



Investment Properties Corporation of Naples
 3838 Tamiami Trail North Suite 402
 Naples Florida 34103-3586
 Tel: 239-261-3400 Fax: 249-261-7579 www.ipcnaples.com

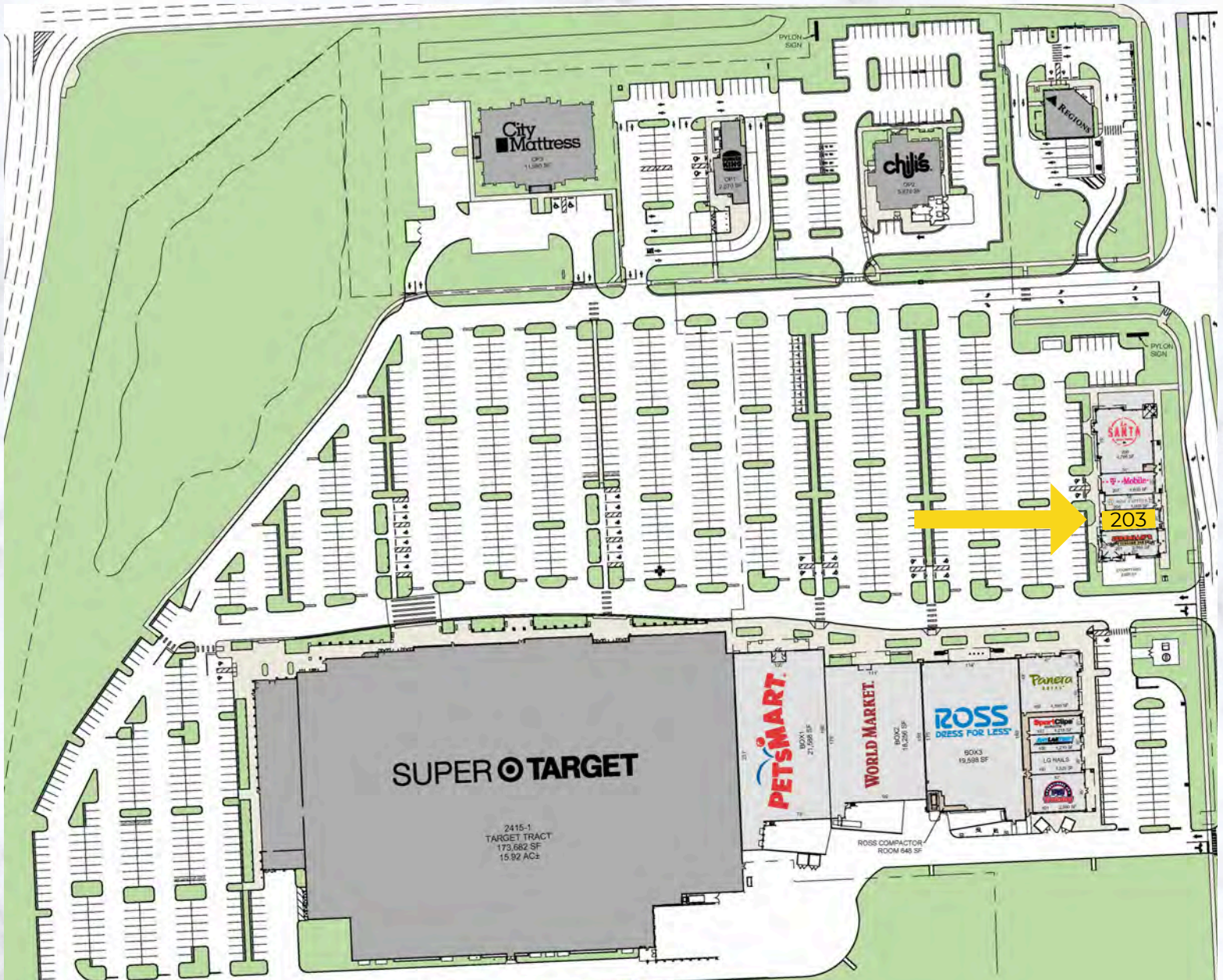
Licensed Real Estate Broker

The statement and figures presented herein, while not guaranteed, are secured from sources we believe authoritative. Subject to prior sale, lease, withdrawal and price change without notice.



TENANT ROSTER:

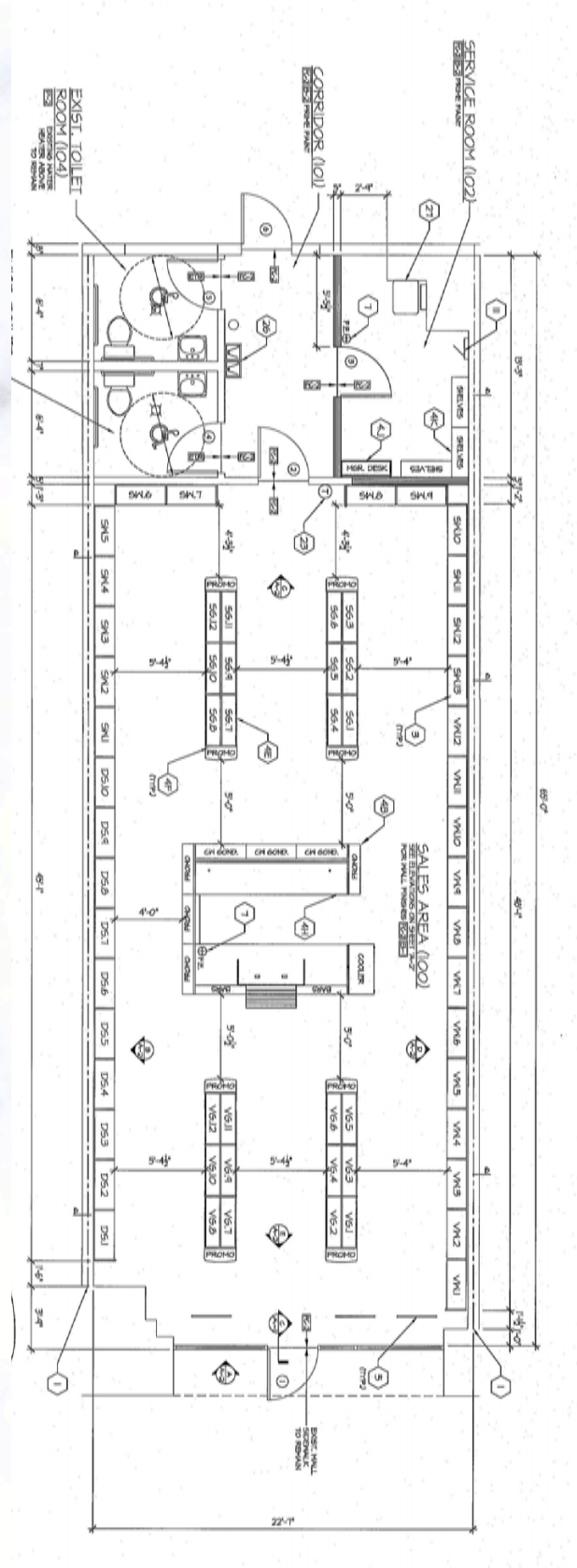
- #101: Back Nine 2,800 SF
- #103: LG Nails 1,528 SF
- #105: AnyLabTest 1,210 SF
- #107: Sports Clips 1,215 SF
- #109: Panera Bread 4,560 SF
- #201: Jeremiah's 2,098 SF
- #203: AVAILABLE 1,610 SF**
- #205: Hair Cuttery 1,005 SF
- #207: T-Mobile 1,600 SF
- #209: Kandela Tacos & Tequila 4,796 SF
- 2415-1: Target 173,682 SF
- Box1: Petsmart 21,588 SF
- Box 2: World Market 18,256 SF
- Box 3: Ross Dress For Less 19,598 SF
- OP1: Burger King 2,870 SF
- OP2: Chilis 5,876 SF
- OP3: City Mattress 11,995 SF





UNIT #203

1,610 SF





TARPON BAY PLAZA

2405-2415 Tarpon Bay Blvd | Naples, FL 34119



	<u>1 MILE</u>	<u>3 MILES</u>	<u>5 MILES</u>
POPULATION	4,781	55,732	123,061
AVG. INCOME	\$156,542	\$146,126	\$147,708
HOUSING UNITS	3,362	31,254	74,683

2024 Demographic search



CONTACT **(239) 261-3400**

Tara Stokes, ext. 176, tara@ipcnaples.com
John Cheffy, ext. 182, john@ipcnaples.com