



## FOR LEASE

6109 Blue Circle Drive, Minnetonka, MN 55345  
1,320sf & 1,664sf  
ONLY \$12.00/ft/yr Net + \$10.96 CAM



### Property Highlights

- + Well Maintained Facility
- + Multiple Outdoor Seating Areas
- + New Landscaping 2022
- + LED Lighting throughout building
- + Utilities Included



[www.copperwoodmn.com](http://www.copperwoodmn.com)

18258 Minnetonka Blvd – Suite 205 Deephaven, Minnesota 55391

**Patrick Senescall**

o. 952.392.1310 | c. 612.875.8184

[patrick@copperwoodmn.com](mailto:patrick@copperwoodmn.com)



A Division of Copperwood Investments, LLC

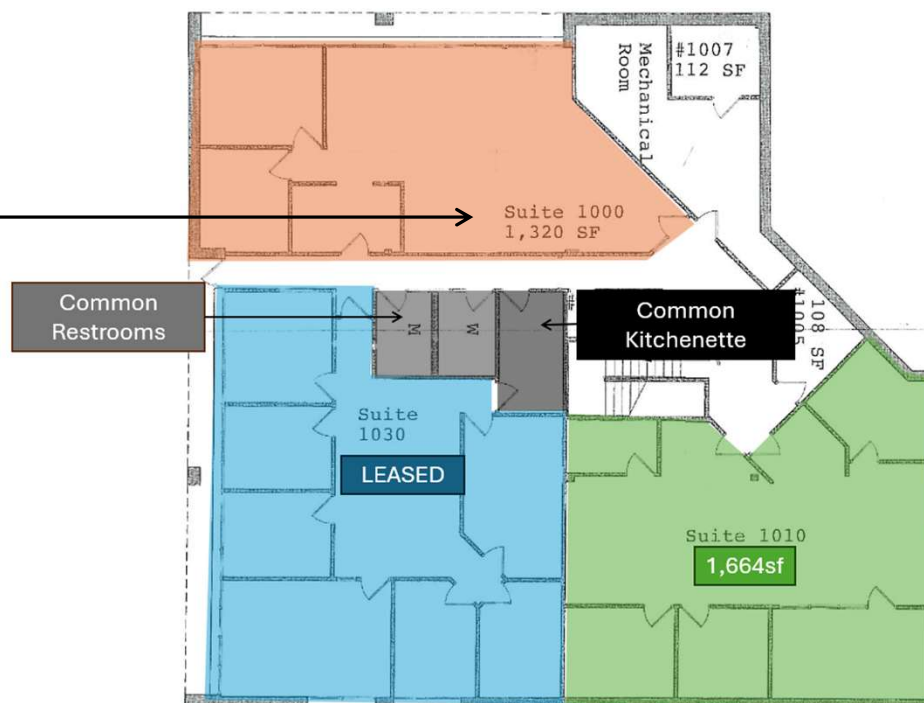


## FOR LEASE

6109 Blue Circle Drive – Minnetonka  
Suite 1000 – 1,320sf @ 2,525.00/mo

### Property Detail

- + Shared Kitchenette
- + Reception Area
- + 2 Private Offices
- + Perimeter Windows Throughout
- + Natural Light
- + New Grid & LED Lighting
- + Restrooms Across the Hall
- + NEW HVAC UNIT
- + 12,000sf Building



[www.copperwoodmn.com](http://www.copperwoodmn.com)

18258 Minnetonka Blvd – Suite 205 Deephaven, Minnesota 55391

Patrick Senescall

o. 952.392.1310 | c. 612.875.8184

patrick@copperwoodmn.com



A Division of Copperwood Investments, LLC

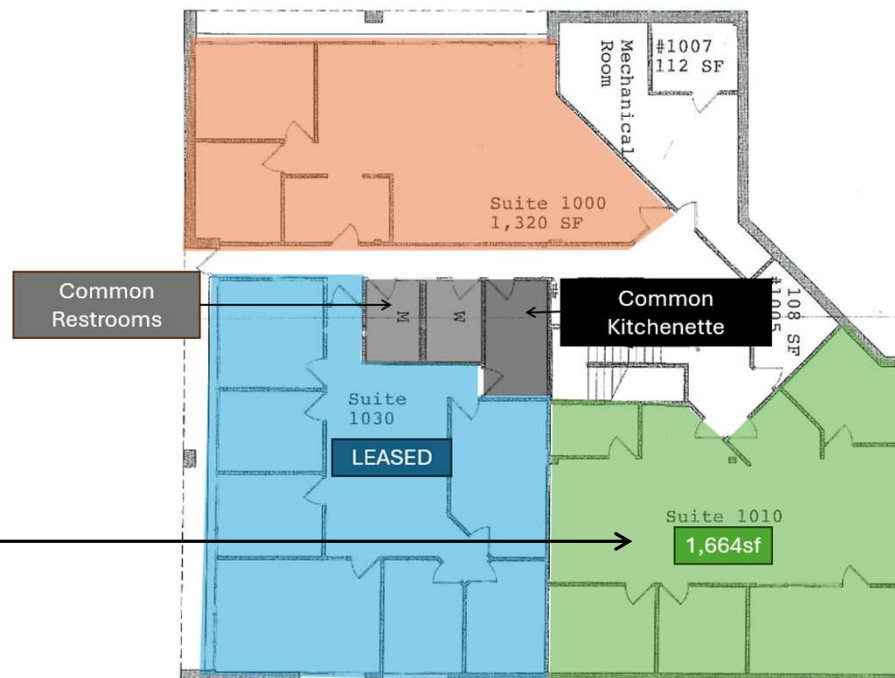


## FOR LEASE

6109 Blue Circle Drive – Minnetonka  
Suite 1010 – 1,664sf @ 2,500.00/mo

### Property Detail

- + Shared Kitchenette
- + Reception Area
- + 4 Private Offices
- + 1 IT Room
- + Large Open Area
- + Restrooms Down the Hall
- + NEW HVAC UNIT
- + 12,000sf Building



[www.copperwoodmn.com](http://www.copperwoodmn.com)

18258 Minnetonka Blvd – Suite 205 Deephaven, Minnesota 55391

Patrick Senescall

o. 952.392.1310 | c. 612.875.8184

[patrick@copperwoodmn.com](mailto:patrick@copperwoodmn.com)



A Division of Copperwood Investments, LLC