



1735 MARKET ST. 13TH FLOOR, PHILADELPHIA, PA



FOR SUBLEASE | 14,183 SF

SUITE 1300 HIGHLIGHTS

- Modern, collaborative office space - plug and play
- Includes large and small conference rooms, 8 private offices, 35 workstations, informal meeting spaces, phone and wellness rooms, large eat-in kitchen area, sound masking system
- Term available through June 2029



**IN THE HEART OF WEST MARKET STREET,
STEPS FROM THE COMCAST CENTER AND
COMCAST TECHNOLOGY CENTER**

BUILDING HIGHLIGHTS

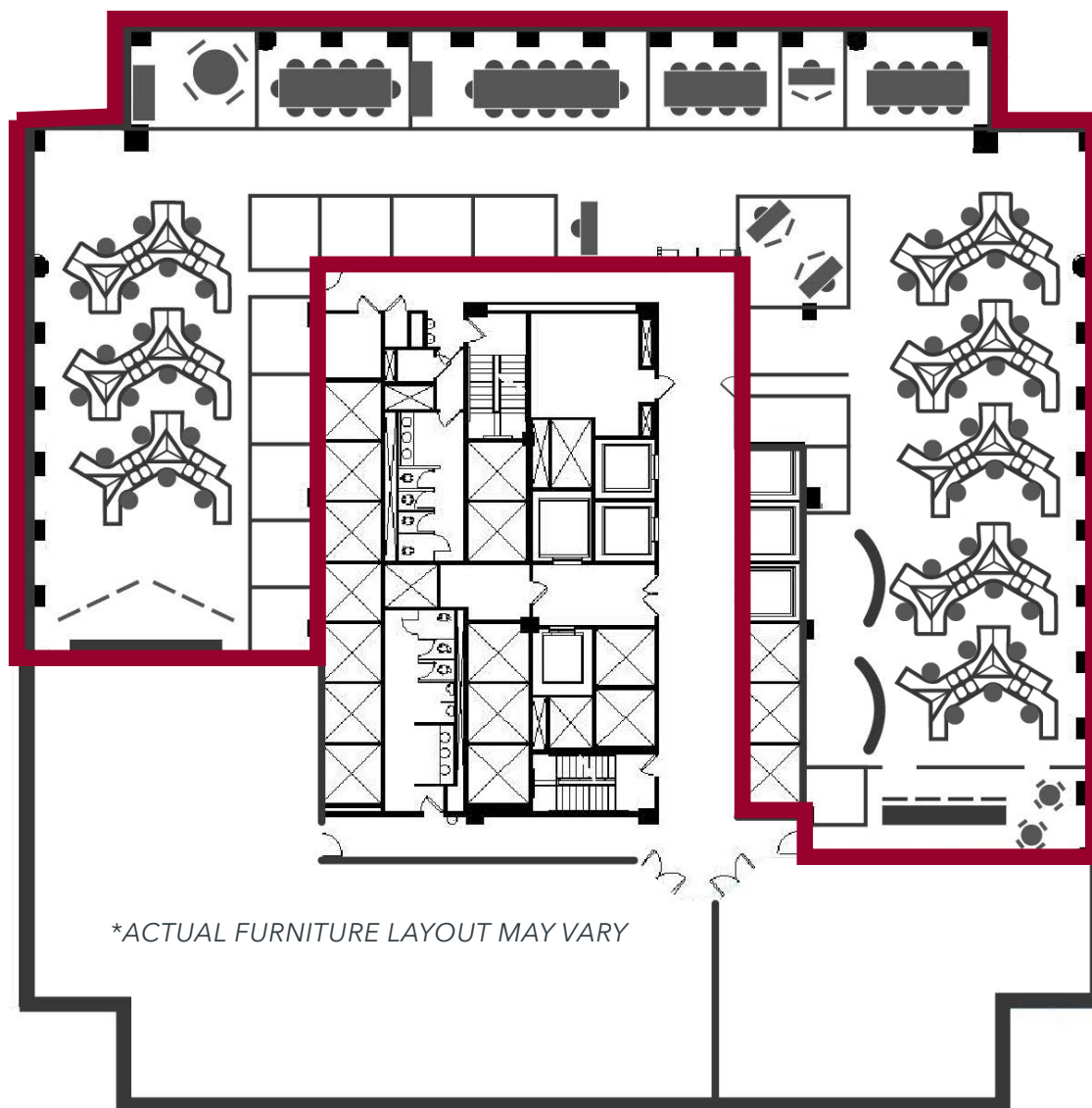
- New tenant-only "Lounge @ 1735" featuring game area, bar with TVs, soft seating, wine lockers, and furnished terrace overlooking Market Street
- New 100-person conference facility with flexible seating configurations
- On-Site Building Management
- Direct underground access to Suburban Station
- On-site parking



FOR SUBLEASE | 14,183 SF

SUITE 1300

FLOOR PLAN



LEE & ASSOCIATES
COMMERCIAL REAL ESTATE SERVICES

LEE & ASSOCIATES OF EASTERN PENNSLVANIA LLC
220 W. Germantown Pike, Suite 200, Plymouth Meeting, PA 19462 USA
610.400.0499 | lee-associates.com/easternpa

MARGO S. MOCARSKI
mmocarski@lee-associates.com
215.880.5786

All information furnished regarding property for sale, rental or financing is from sources deemed reliable, but no warranty or representation is made as to the accuracy thereof and same is submitted subject to errors, omissions, change of price, rental or other conditions prior to sale, lease or financing or withdrawal without notice. No liability of any kind is to be imposed on the broker herein.