

CBRE

**1100** CONNECTICUT AVENUE  
WASHINGTON, DC

# Excellent *Visibility.*

**28,000** VPD • **98** Walk Score • **89** Bike Score



## It's all in the details...



Stellar location on the corner of Connecticut Avenue and L Street, NW



Immediate Access to Farragut North Metro



Onsite Parking Garage (Valet & Self-Service) with EV Charging Stations/Bike Racks & Generous Parking Ratio



Newly Renovated Lobby with Front Desk Attendant



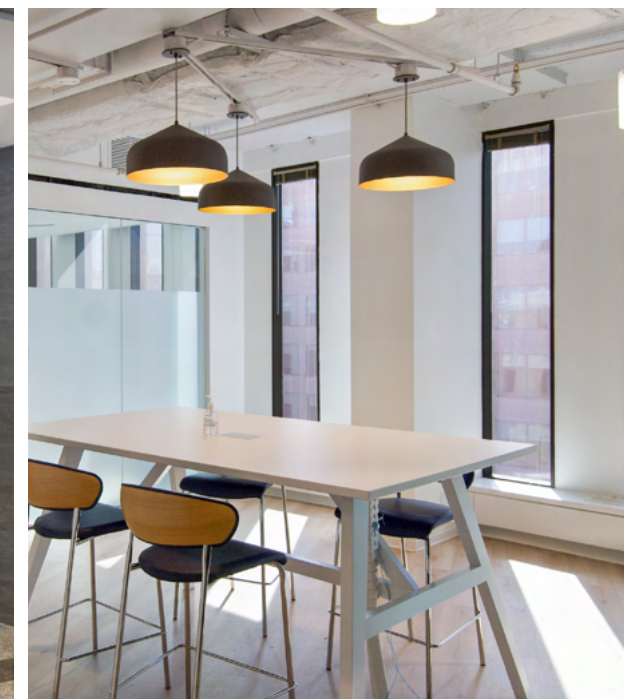
24/7 Building Security with Cameras & Fob Access Control for Elevator/Suites



Spectacular Views of Farragut Square, the Mayflower Hotel and Dupont Circle

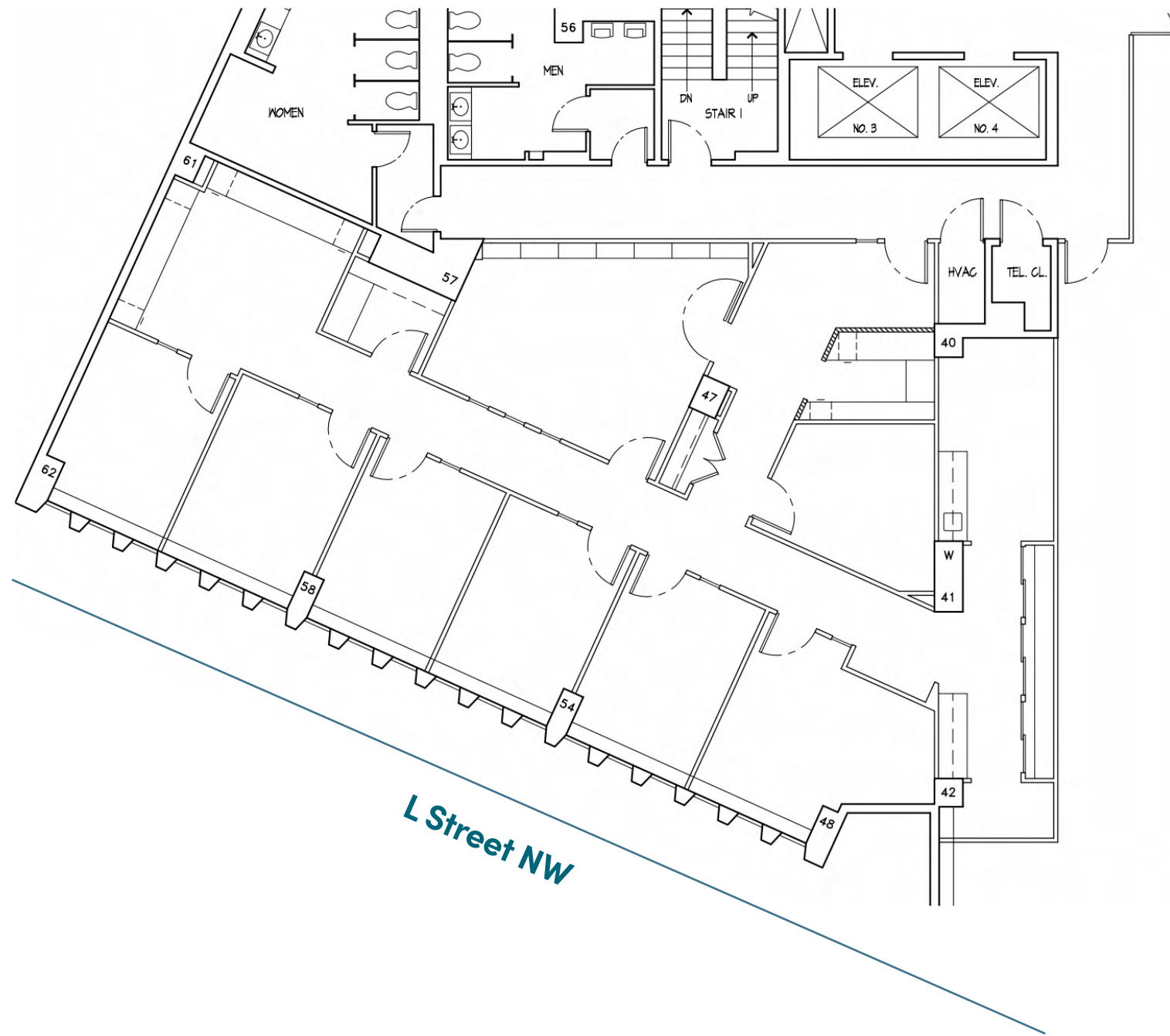


Brand New Tenant Shared Conference Center & Lounge Area with ADA Restrooms Including Shower Access

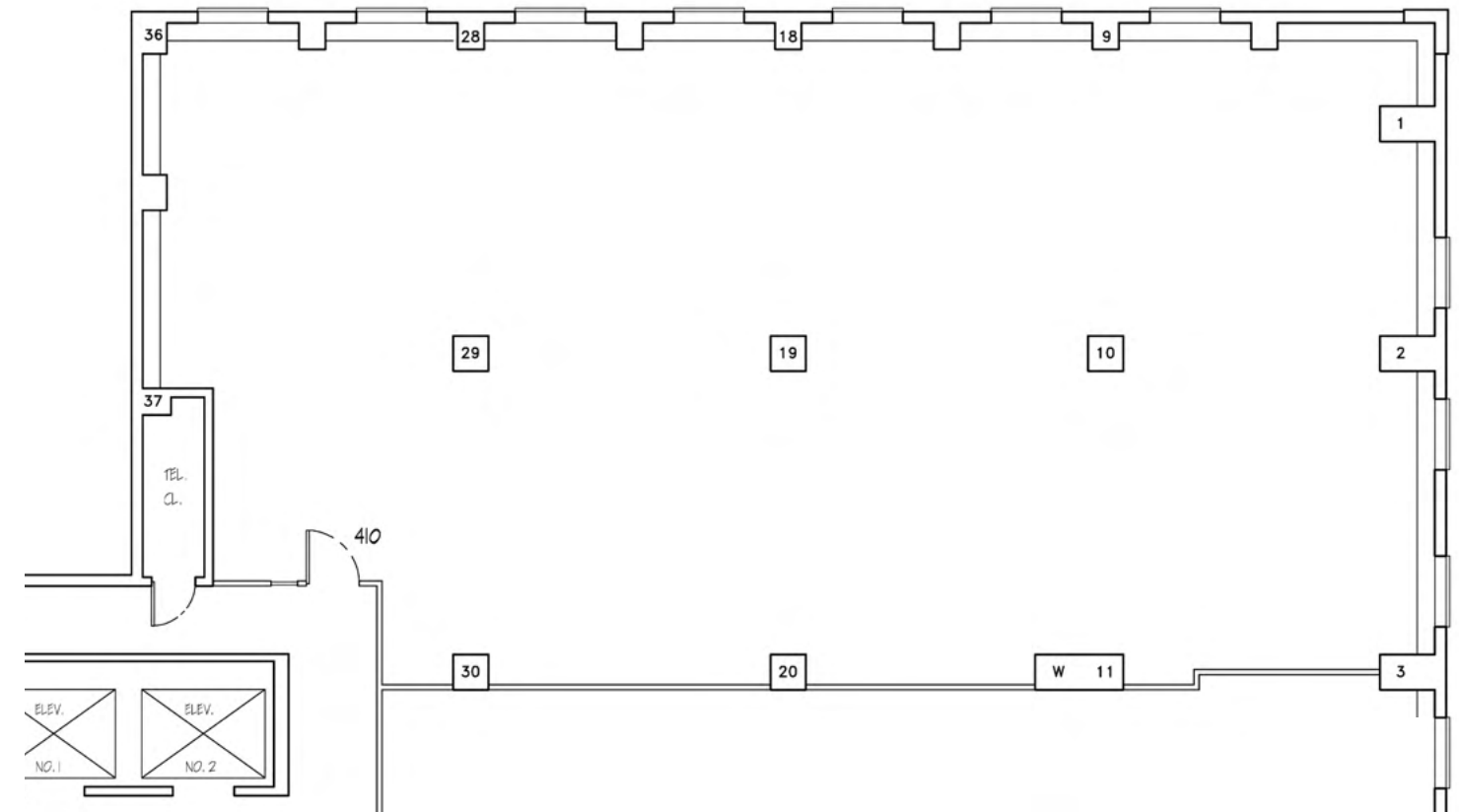




# Suite 340 • 2,700 RSF

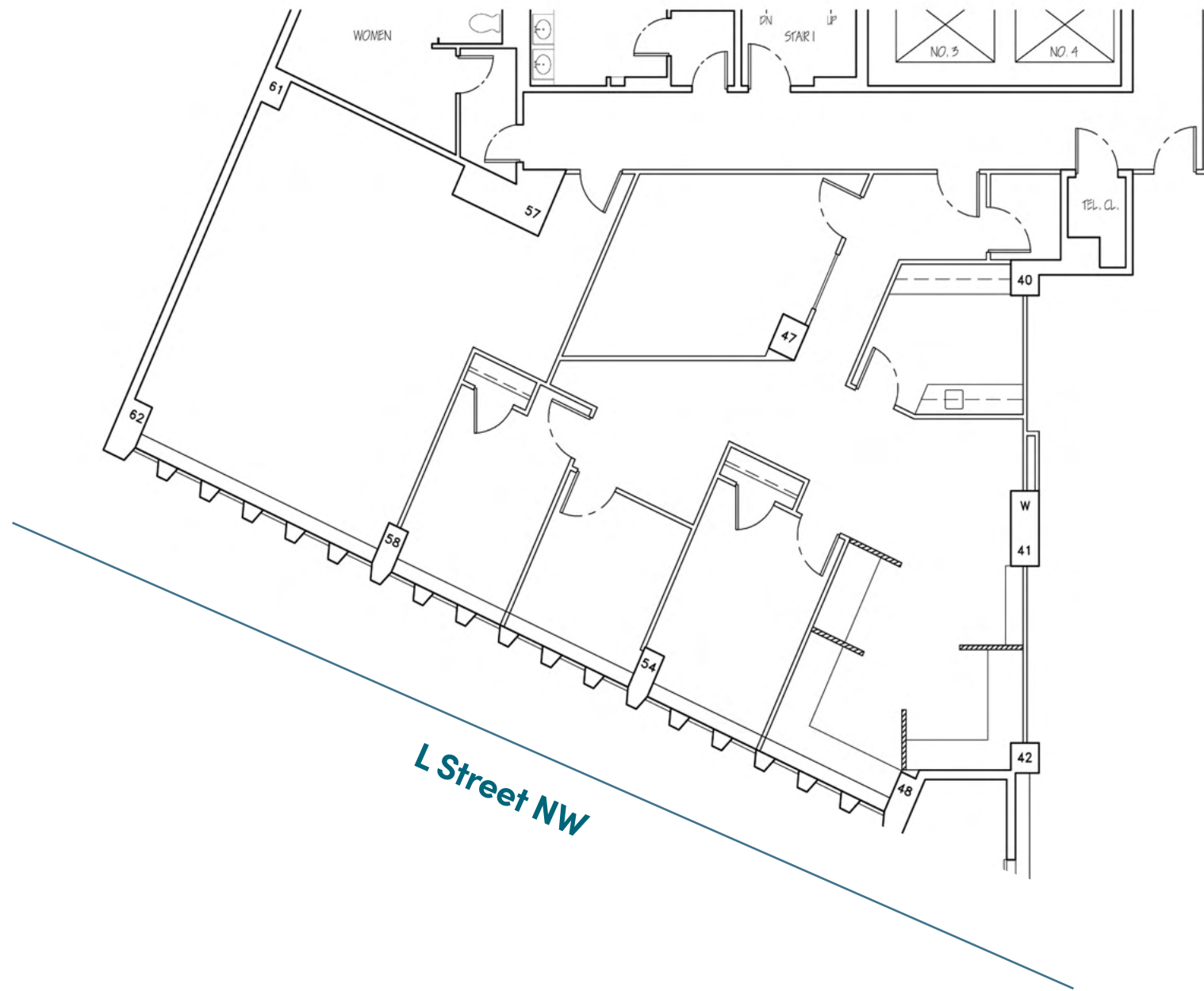


# Suite 410 • 3,105 RSF

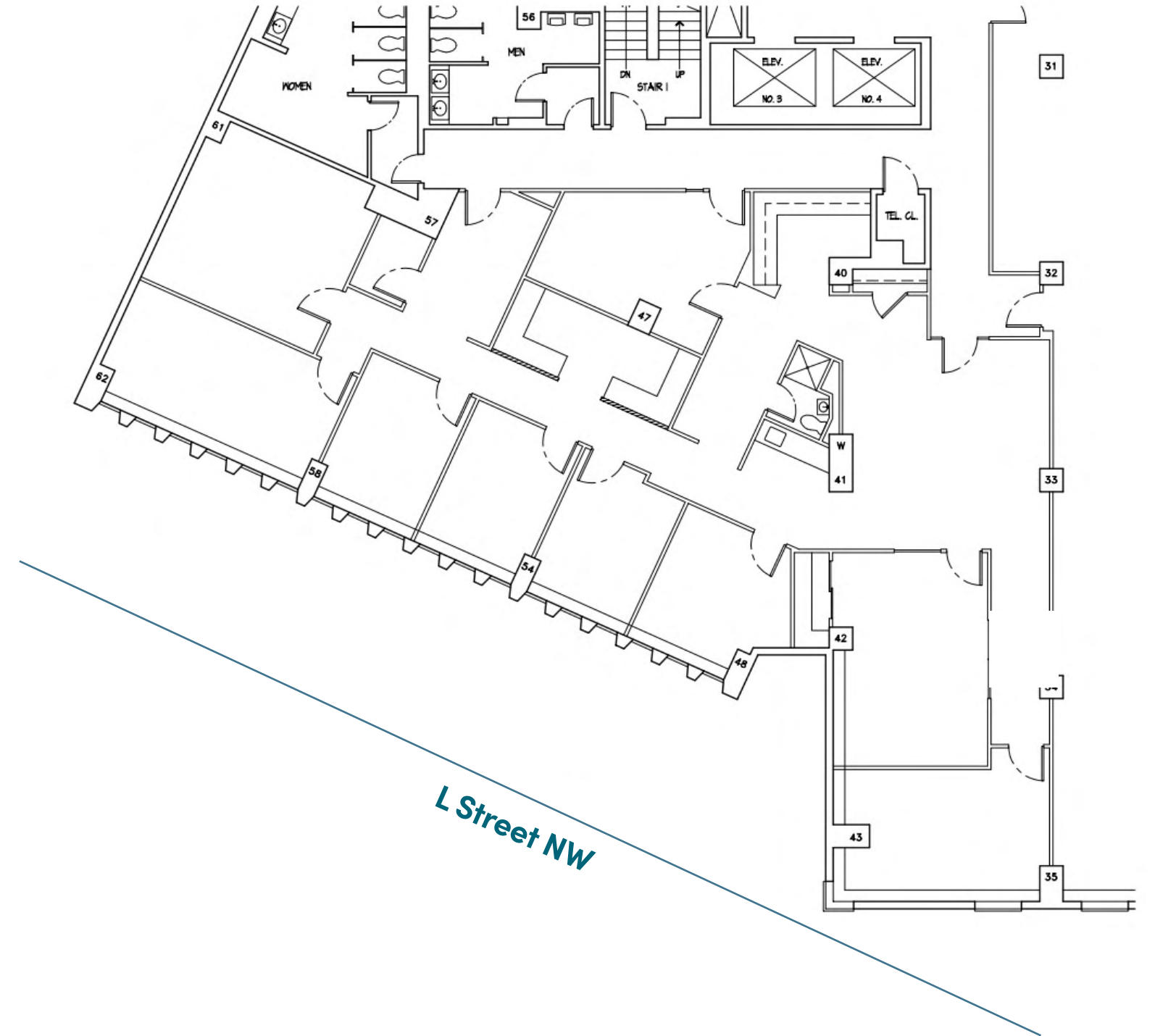


Connecticut Avenue NW

**Suite 440** • 1,674 RSF



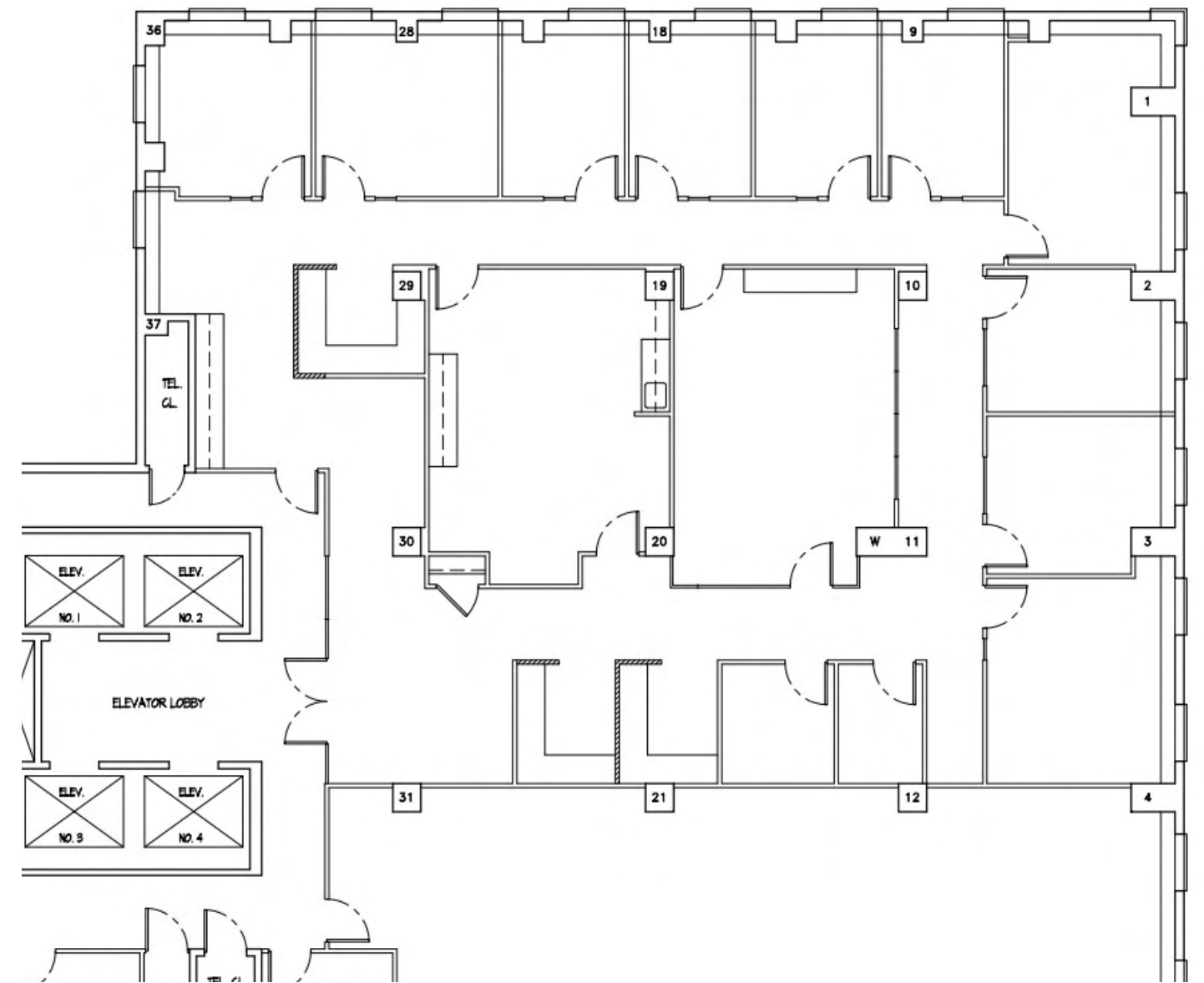
**Suite 540** • 3,556 RSF



# Suite 650 • 5,995 RSF



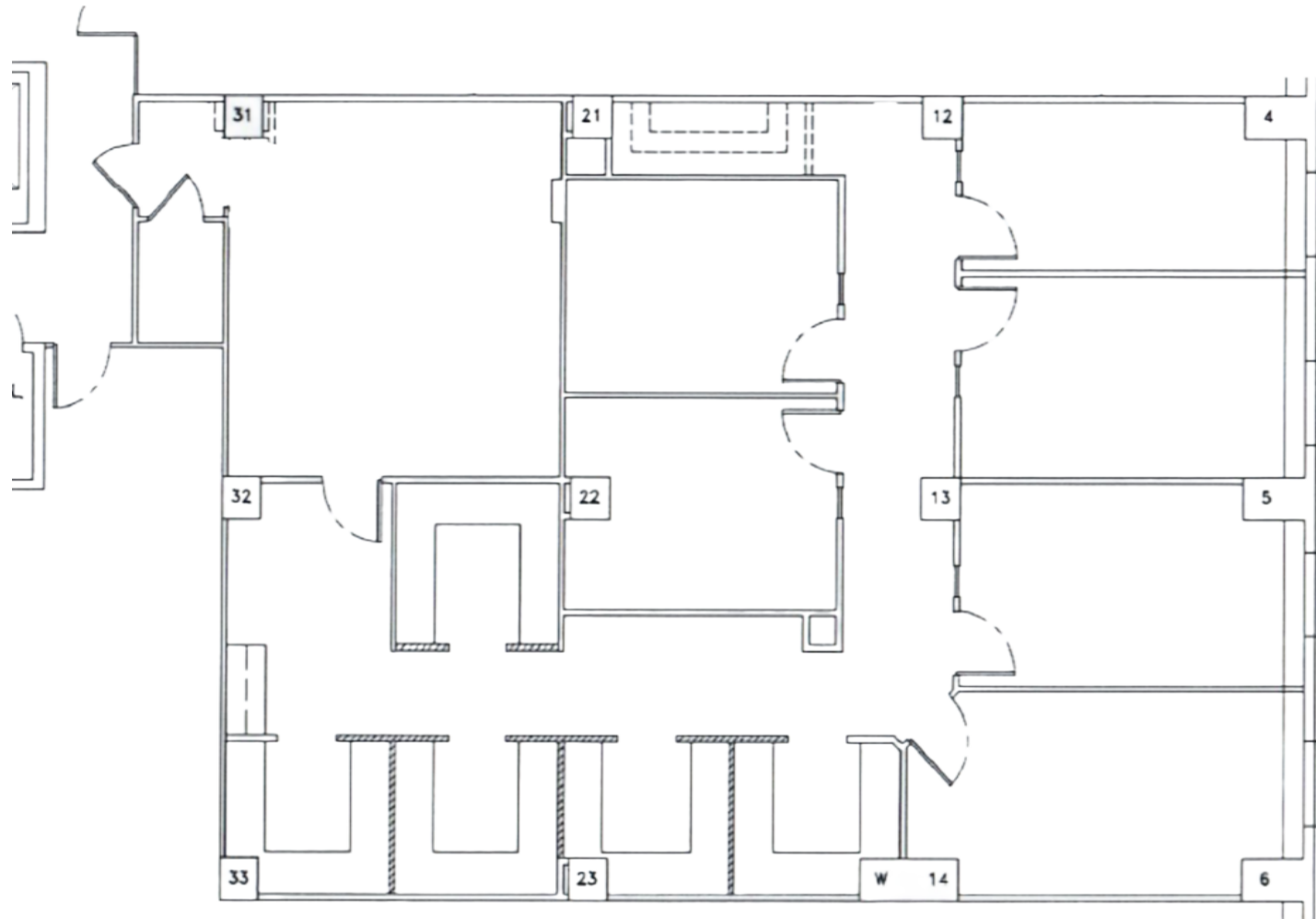
# Suite 825 • 4,295 RSF



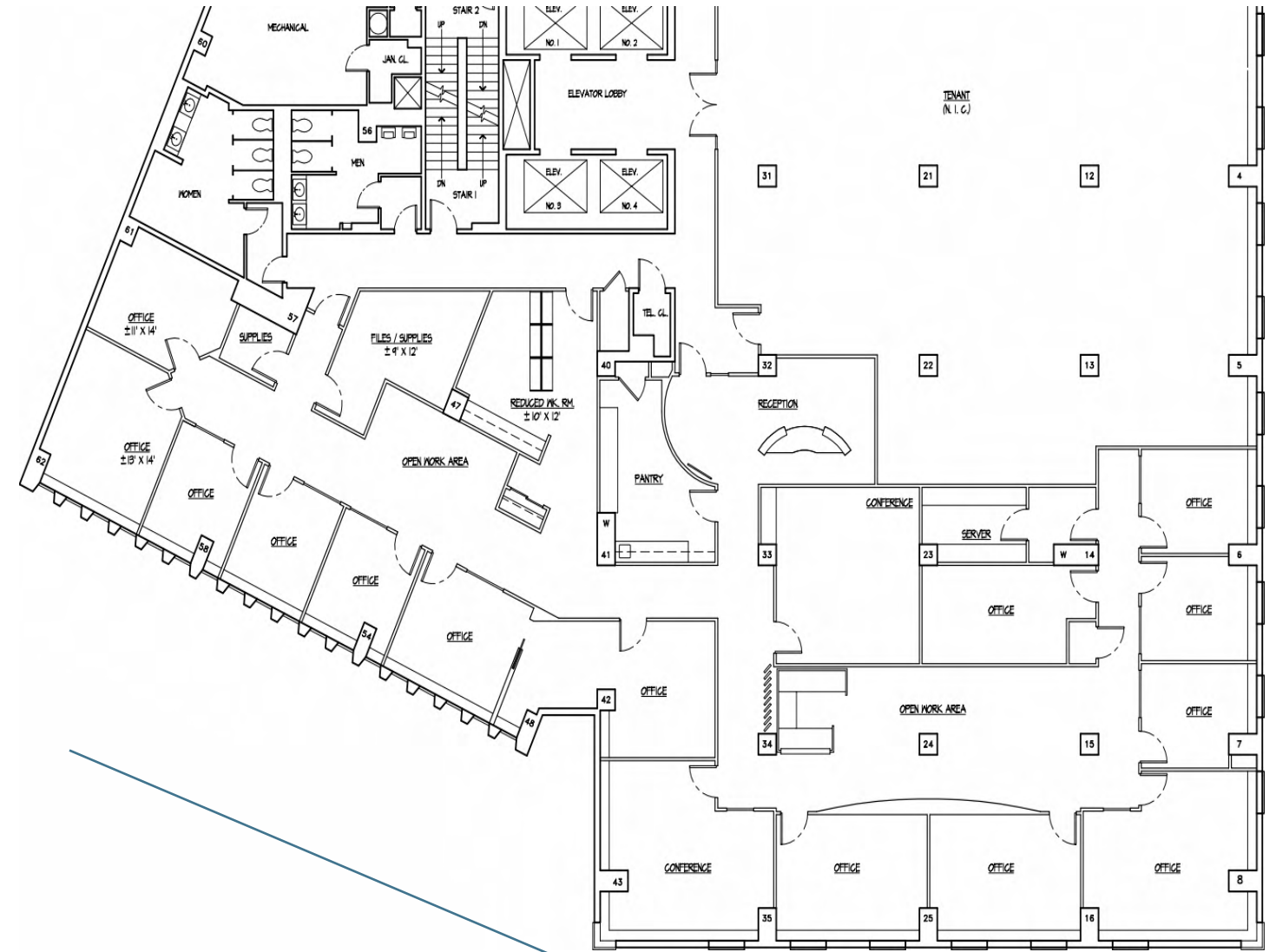
Connecticut Avenue NW

Connecticut Avenue NW

# Suite 825A • 2,545 RSF



# Suite 900 • 6,673 RSF

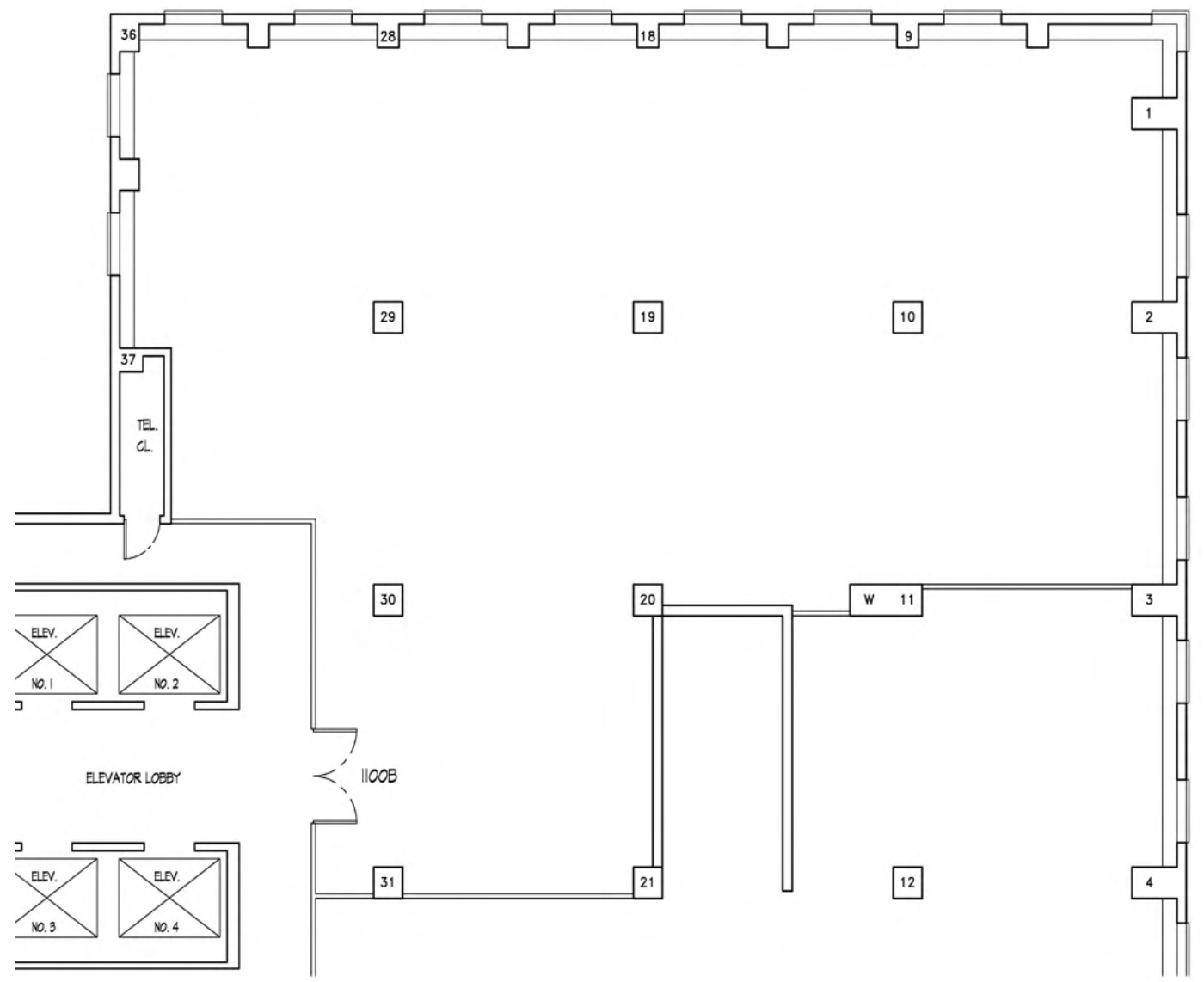


Connecticut Avenue NW

Connecticut Avenue NW

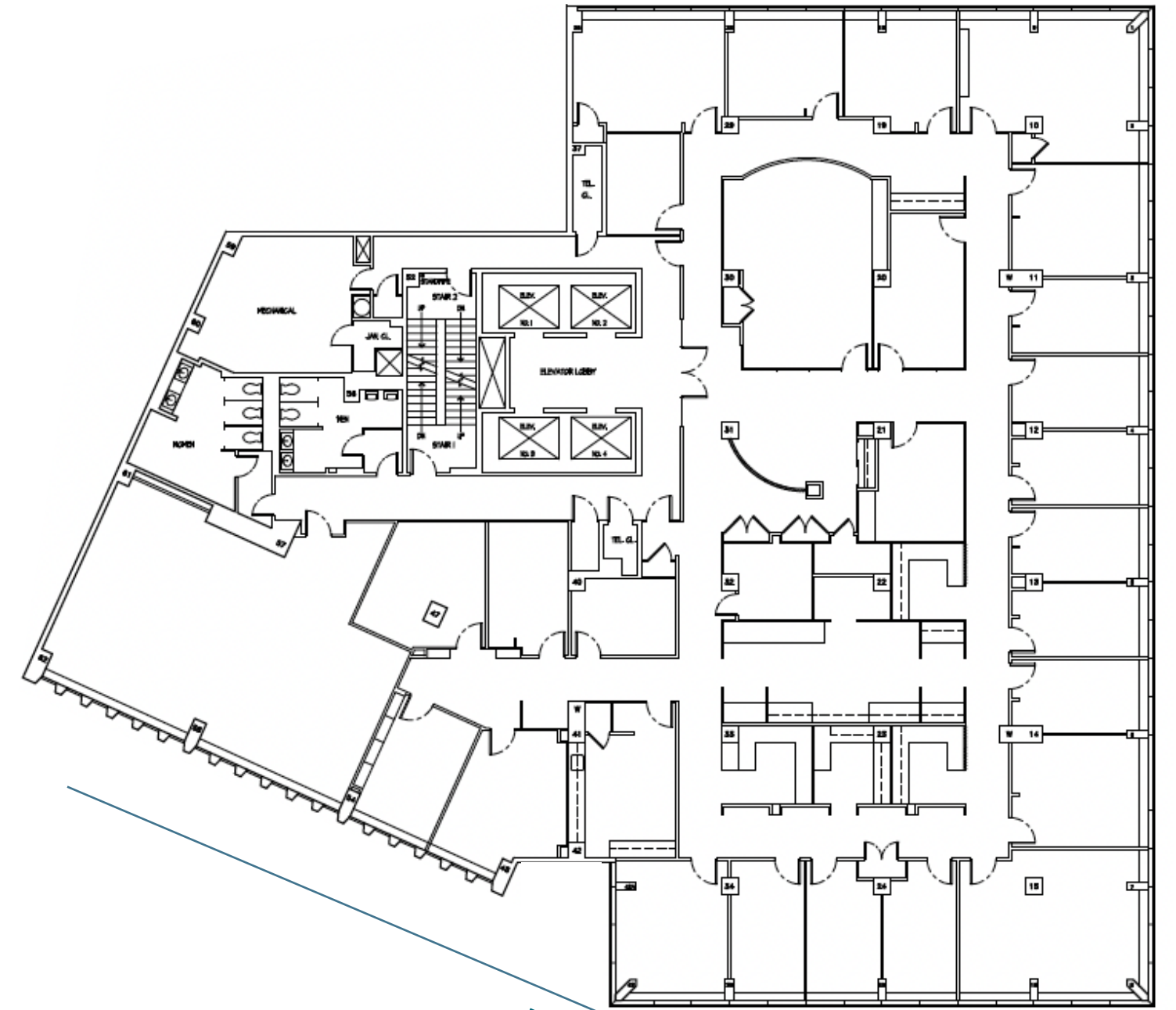
L Street NW

# Suite 1100B • 3,606 RSF



# Suite 1200 • 11,266 RSF

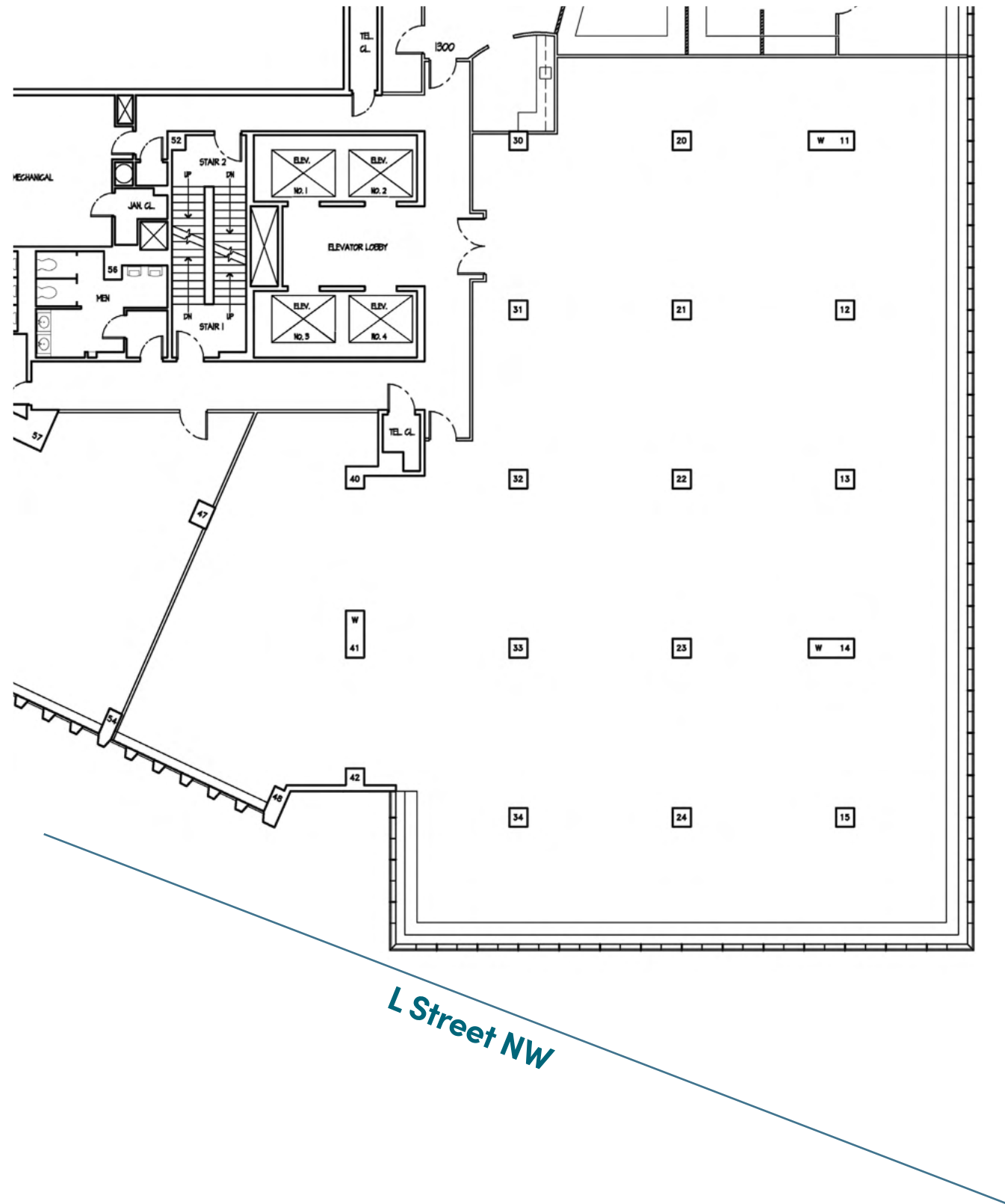
Connecticut Avenue NW



Connecticut Avenue NW

L Street NW

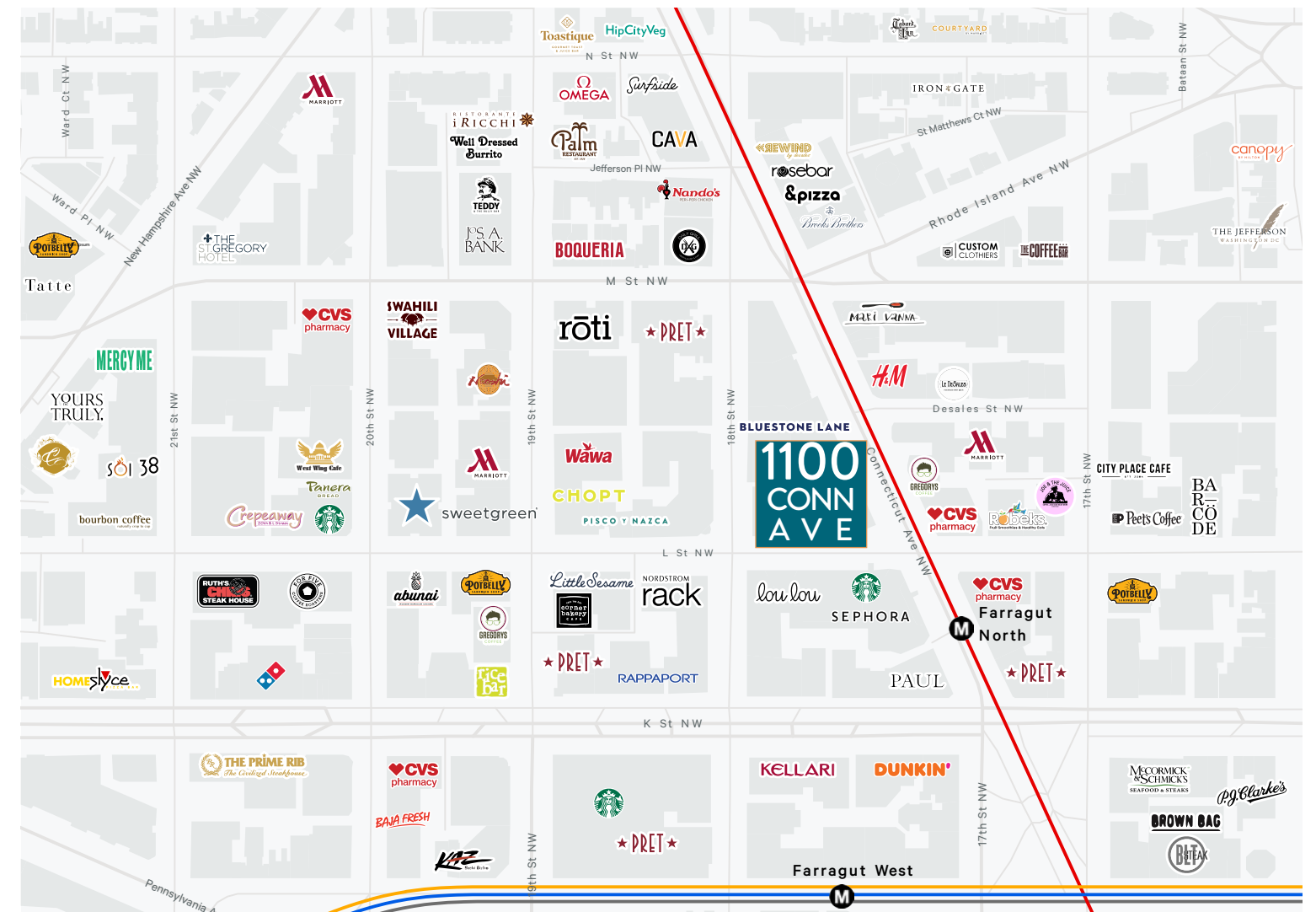
# Suite 1300 • 7,978 RSF



Connecticut Avenue NW

## Expand Your Views. Elevate Your Success.

In the heart of the Central Business District, 1100 Connecticut Avenue is situated at the intersection of Connecticut Avenue and L Street, one of the most prominent corners in Washington, DC. This area is home to more than 3,000 national and international companies and organizations including law firms, associations, accountants, corporate HQ's, government affairs offices, think tanks and lobbyists. Across the street from Metro's Farragut North Station (Red Line), the immediate area is also served by Farragut West Station (Orange, Blue and Silver Lines) and Dupont Circle Station (Red Line).





Stunning Views.



# 1100 CONNECTICUT AVENUE



## CONTACT US

### Lara Nealon

First Vice President  
+1 703 346 9849  
Lara.Nealon@cbre.com

### Brittany Gosnell

Vice President  
+1 610 213 0413  
Brittany.Gosnell@cbre.com

1100-Conn-Ave.cbre-properties.com | 1100 Connecticut Ave NW, Washington, DC 20006

# CBRE

© 2026 CBRE, Inc. All rights reserved. This information has been obtained from sources believed reliable, but has not been verified for accuracy or completeness. You should conduct a careful, independent investigation of the property and verify all information. Any reliance on this information is solely at your own risk. CBRE and the CBRE logo are service marks of CBRE, Inc. All other marks displayed on this document are the property of their respective owners, and the use of such logos does not imply any affiliation with or endorsement of CBRE. Photos herein are the property of their respective owners. Use of these images without the express written consent of the owner is prohibited.