

8041 S 228th Street - Suite 103

Kent, WA

Key Facts

Property type Industrial space

Building size 40,300 SF

Space available 9,828 SF



Contact Us

Learn more about this property or schedule a tour by reaching out to our local investment and leasing officer.

Chad Rawlings

+1 (206) 310-4229

chad.rawlings@eqtpartners.com

8041 S 228th Street - Suite 103

Kent, WA

BUILDING SPECIFICATIONS

Suite 103 Available

Warehouse Space: 8,622 SF

Office Space: 1,206 SF

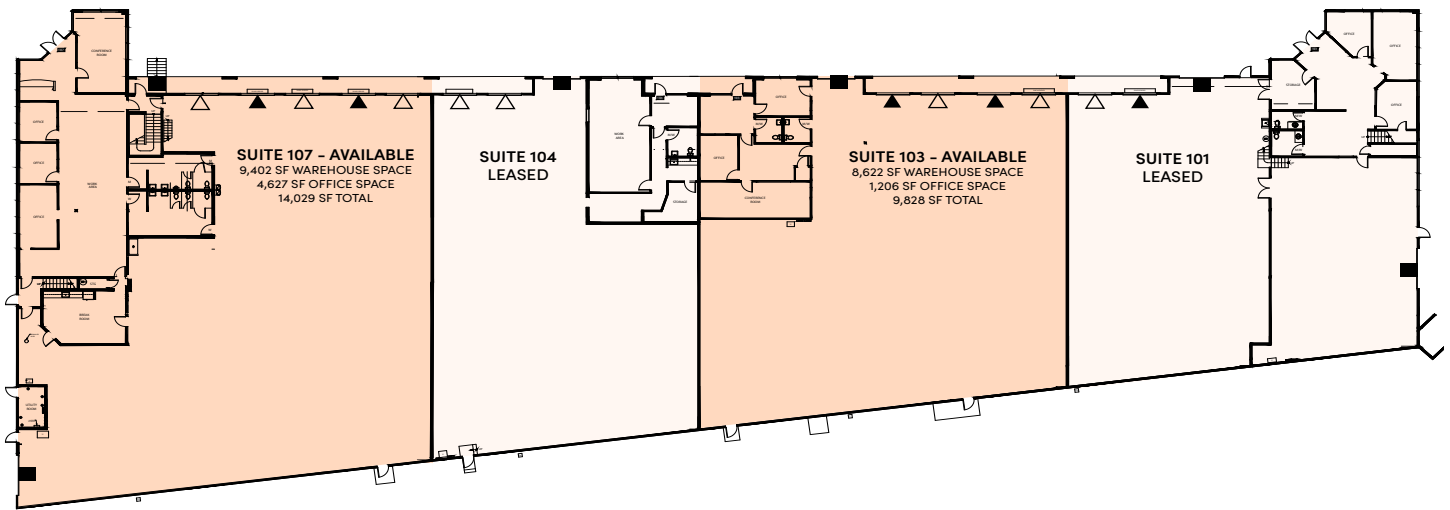
Total Space: 9,828 SF

Dock Doors: 4 (2 Edge of Dock Levelers)

Drive-In Doors: 1

Lighting: LED

Power: 200 Amps, 277/480 Volt



Contact Us

Learn more about this property or schedule a tour by reaching out to our local investment and leasing officer.

Chad Rawlings

+1 (206) 310-4229

chad.rawlings@eqtpartners.com