

806-808 Shelby Highway  
Gaffney, SC



CONTACT

Andy Hayes 864-706-0189  
ahayes@spencerhines.com

CoStar  
POWERBROKER

[WWW.SPENCERHINES.COM](http://WWW.SPENCERHINES.COM)

COMMERCIAL REAL ESTATE SALES, LEASING, & INVESTMENTS  
215 N. Pine Street, 1<sup>st</sup> floor, Spartanburg, SC - 864.583.1001

No warranty or representation, expressed or implied, is made to the accuracy of the information contained herein, and the same is submitted subject to errors, omissions, change of price, rental or other conditions, imposed by the principles.

- 2 industrial buildings just off I-85 in Gaffney
- Combined sq. footage of approx. 9350± SF
- Located on Highway 18 (Shelby Highway)
- Total acreage - 18.8± acres
- Will consider subdividing
- ½ mile from I-85 on Exit 96
- Cherokee County Tax Map #: 116-00-00-028.000 & 116-00-00-028.001

**SALE PRICE: \$850,000**



## BUILDING 1 – 806 Shelby Highway



806 Shelby Highway, Gaffney

### SECTION A

- 1600± sq. ft. (approx. 40' x 40')
- Ceiling Height - 13'± clear
- 1 drive-in
- 1 restroom

### SECTION B

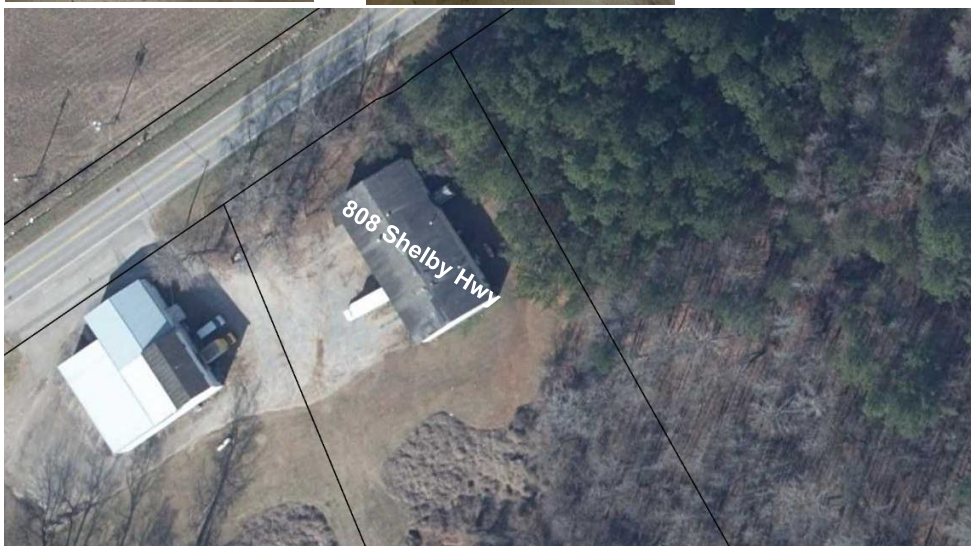
- 740± sq. ft. (approx. 39' x 19')
- 1 dock (8' x 8')
- 1 semi dock door (8' x 8')
- 1 drive-in (8' x 8')
- Ceiling Height - 13'± clear
- 500± sq. ft. office Mezzanine w/ restroom

### SECTION C

- 2,000± sq. ft. (approx. 50' x 40')
- Ceiling Height – 10' ± clear
- Heated and cooled



## BUILDING 2 – 808 Shelby Highway



808 Shelby Highway, Gaffney

- 5000± sq.ft. (approx. 50' x 100')
- 1 dock door (8' x 11')
- 1 semi dock door (8'x8')
- 1 *potential* drive-in door (8'x8')  
(previous opening has been closed off)
- 2 restrooms
- Ceiling Height – 14' ±clear