

Industrial | For Sublease

CBRE

14900 W. Schulte Road

Tracy, CA 95377

±372,195 SF Available | Master Lease Expires February 28, 2026

Asking Rate: \$0.80 PSF/Month, Gross



Available for Immediate Occupancy
14900 W. Schulte Road | Tracy, CA 95377

For Sublease



±372,195 SF of Class A Warehouse Available

Located in West Tracy Submarket

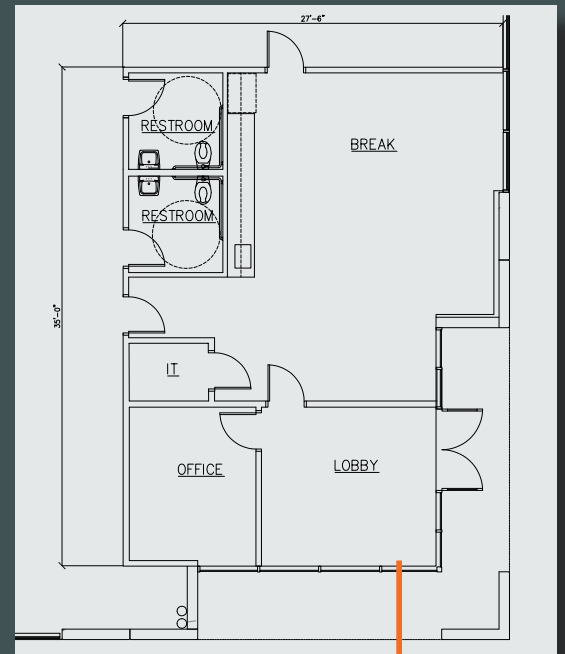
Excellent proximity to the Bay Area

Easy I-205 and I-580 Highway Access

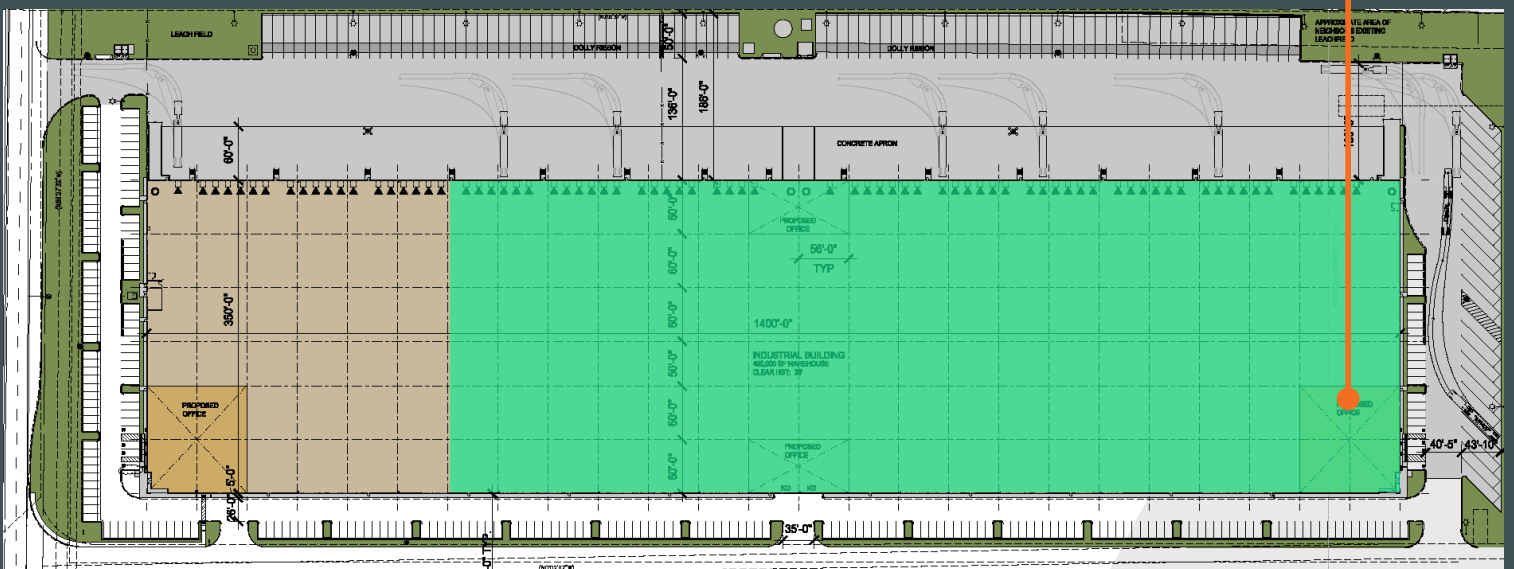
Property Features

- + Available Area: ±372,195 SF
- + Office Area: ±885 SF - lobby, private office, breakroom, and two restrooms
- + Clear Height: ±36'
- + Dock High Doors: 58
- + Grade Level Doors: 3
- + Bays: 56'x60'
- + Truck Stalls: 95
- + Auto Stalls: 130
- + Year Built: 2018
- + ESFR Sprinklers
- + Secured Truck Court
- + Building is fully equipped with 24,000 (1,500 lb capacity) racked pallet positions - [Click here for more details](#)

±885 SF Office



Site Plan



Available for Immediate Occupancy
14900 W. Schulte Road | Tracy, CA 95377

For Sublease

Property Photos



Contact Us

Thomas Davis, SIOR
Vice Chairman
td.davis@cbre.com
+1 209 476 2940
Lic. 00880761

Robert Taylor
Senior Vice President
rj.taylor@cbre.com
+1 209 476 2920
Lic. 00937509

Daniel Davis, SIOR, CCIM
Senior Vice President
dt.davis@cbre.com
+1 209 476 2941
Lic. 01964386

Ryan Davis
Associate
ryan.davis1@cbre.com
+1 209 476 2995
Lic. 02167375

Ross Rudow
Associate
ross.rudow@cbre.com
+1 209 476 2996
Lic. 02219068

© 2024 CBRE, Inc. All rights reserved. This information has been obtained from sources believed reliable, but has not been verified for accuracy or completeness. You should conduct a careful, independent investigation of the property and verify all information. Any reliance on this information is solely at your own risk. CBRE and the CBRE logo are service marks of CBRE, Inc. All other marks displayed on this document are the property of their respective owners, and the use of such logos does not imply any affiliation with or endorsement of CBRE. Photos herein are the property of their respective owners. Use of these images without the express written consent of the owner is prohibited. 1336 Dupont Ct