

FOR LEASE | Pinho Professional Center | 55-79 Schanck Road | Freehold, NJ

MEDICAL/PROFESSIONAL OFFICE 913 SF - 9,256 SF



PROPERTY HIGHLIGHTS

- Pinho Professional Center offers 82,000 SF of Medical/Professional Office Suites
- Customizable build-to-suit office space with upgrade options available through an extensive build-out package
- 1,550 SF finished unit also available in Building A
- Prime location with quick access to Route 9, and just minutes from CentraState Hospital, Freehold Raceway Mall, and the Monmouth County Courthouse
- Separately metered electric & individually controlled HVAC units
Generous parking ratio

OFFERING SUMMARY

Lease Rate:	\$20.00 SF/yr (NNN)
NNN:	\$4.00 PSF
Available SF:	913 SF - 9,256 SF (divisible)
Building Size:	20,500 SF

DEMOGRAPHICS	1 MILE	3 MILES	5 MILES
Total Households	2,655	18,092	31,668
Total Population	7,634	48,458	88,336
Average HH Income	\$166,384	\$156,675	\$182,659



MATTHEW LOBOCCHIARO

Associate - Commercial Sales & Leasing
908.360.8054
mlobocchiaro@kislakrealty.com

Kislak Commercial Real Estate Services, Inc.
100 Woodbridge Center Drive
Woodbridge, NJ 07095
908.360.8050 | kislakrealty.com

Pinho Professional Center | 55-79 Schanck Road | Freehold Township, NJ 07728

ADDITIONAL PHOTOS



MATTHEW LOBOCCHIARO

Associate - Commercial Sales & Leasing

908.360.8054

mlobocchiaro@kislakrealty.com

Kislak Commercial Real Estate Services, Inc.

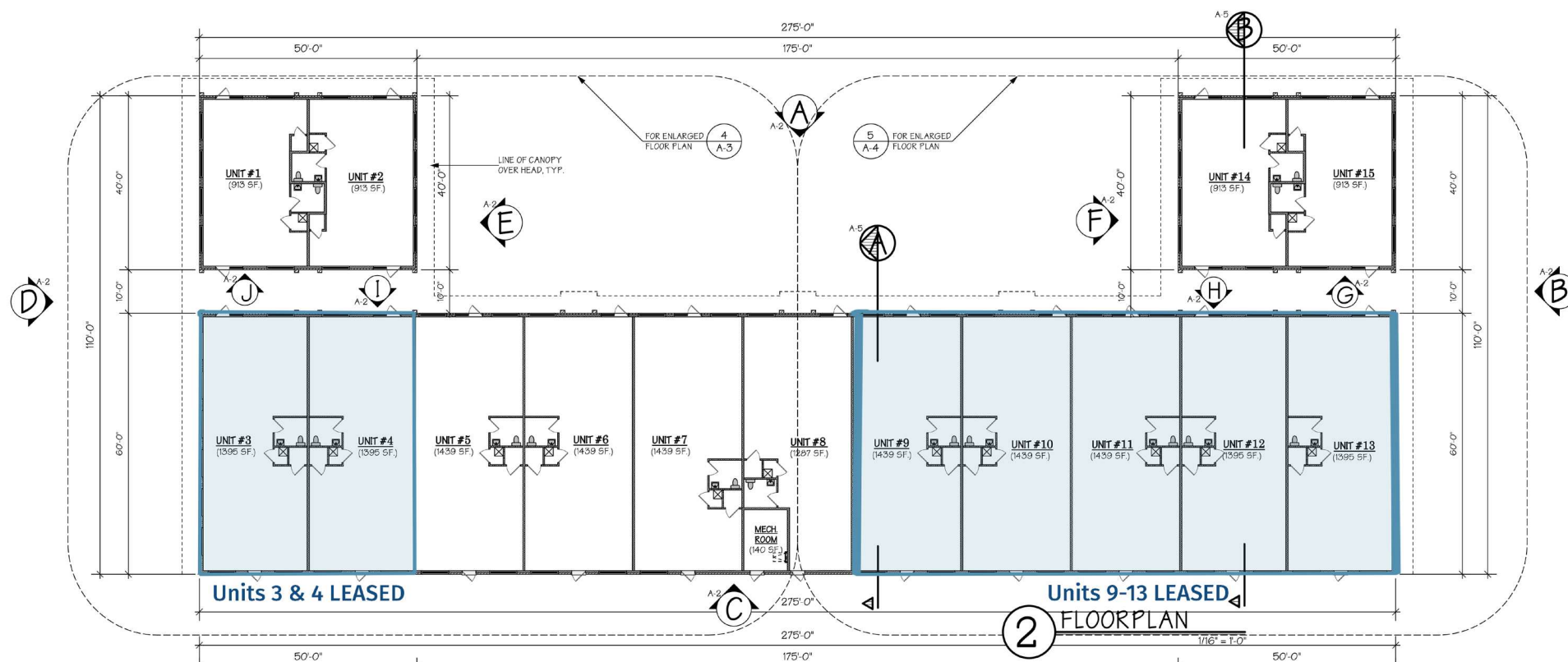
100 Woodbridge Center Drive

Woodbridge, NJ 07095

908.360.8050 | kislakrealty.com

Pinho Professional Center | 55-79 Schanck Road | Freehold Township, NJ 07728

FLOOR PLAN

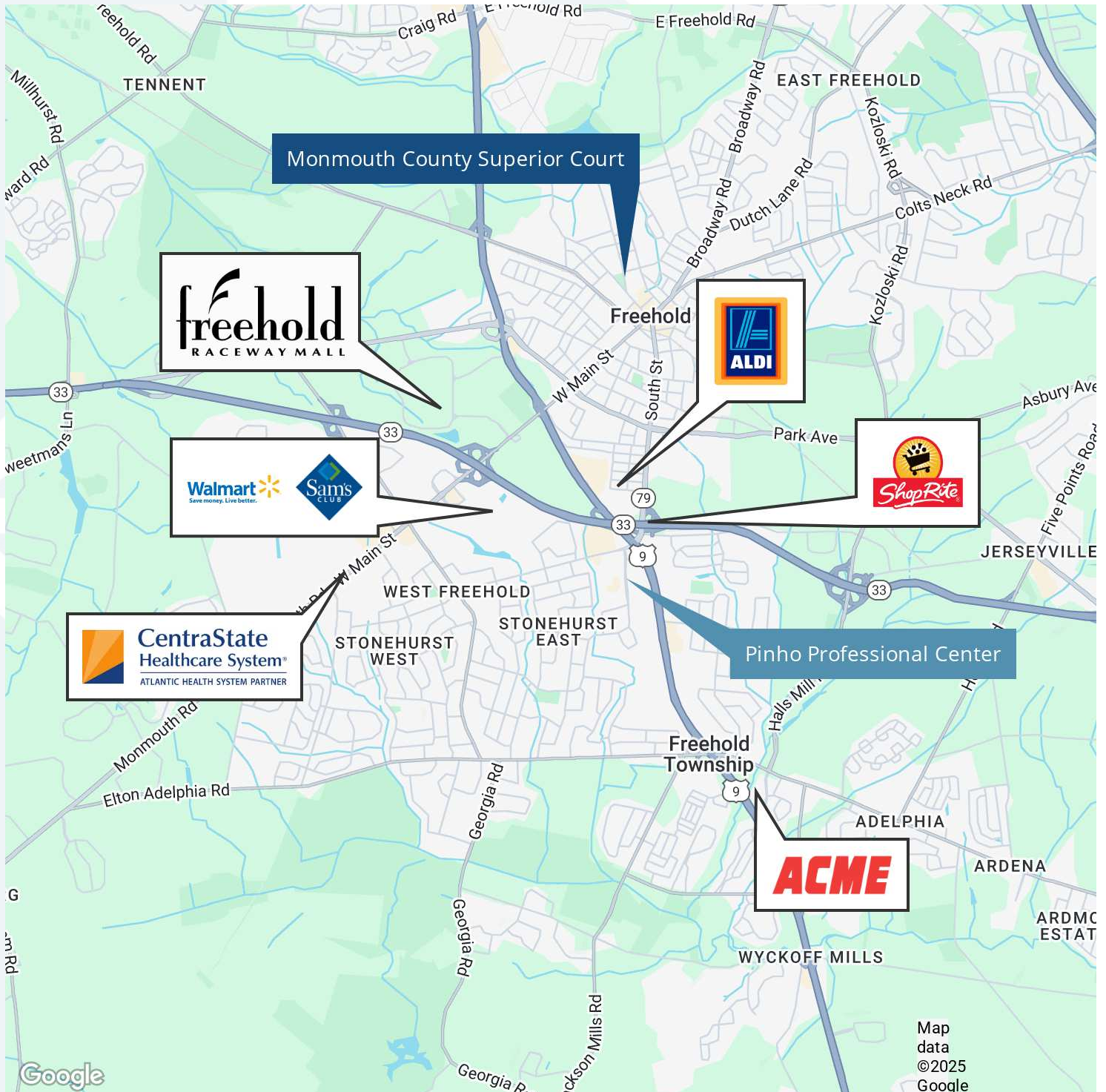


MATTHEW LOBOCCHIARO

908.360.8054
mlobocchiaro@kislakrealty.com

100 Woodbridge Center Drive
Woodbridge, NJ 07095
908.360.8050 | kislakrealty.com

LOCATION MAP

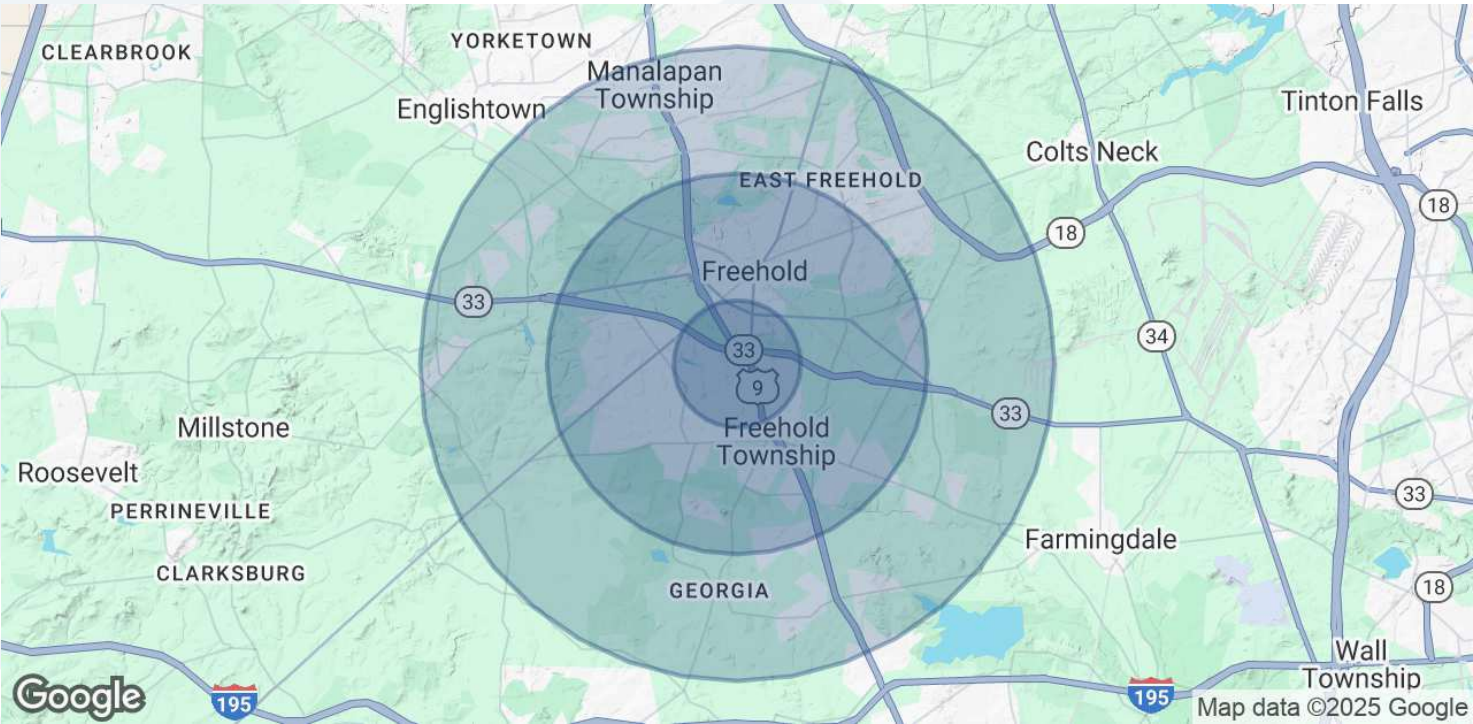


MATTHEW LOBOCCHIARO

Associate - Commercial Sales & Leasing
908.360.8054
mlobocchiaro@kislakrealty.com

Kislak Commercial Real Estate Services, Inc.
100 Woodbridge Center Drive
Woodbridge, NJ 07095
908.360.8050 | kislakrealty.com

DEMOGRAPHICS MAP & REPORT



POPULATION	1 MILE	3 MILES	5 MILES
Total Population	7,634	48,458	88,336
Average Age	40	43	43
Average Age (Male)	39	41	42
Average Age (Female)	41	44	44

HOUSEHOLDS & INCOME	1 MILE	3 MILES	5 MILES
Total Households	2,655	18,092	31,668
# of Persons per HH	2.9	2.7	2.8
Average HH Income	\$166,384	\$156,675	\$182,659
Average House Value	\$525,299	\$561,808	\$638,708

Demographics data derived from AlphaMap

MATTHEW LOBOCCHIARO
 Associate - Commercial Sales & Leasing
 908.360.8054
mlobocchiaro@kislakrealty.com

Kislak Commercial Real Estate Services, Inc.
 100 Woodbridge Center Drive
 Woodbridge, NJ 07095
 908.360.8050 | kislakrealty.com