

10th West Development Site

SWC 10th St West & Ave M-12

FOR SALE



Palmdale, CA 93551

VALLEY REALTY



PROPERTY OVERVIEW

Great commercial development site with over 175ft of frontage along 10th St West, the main artery between Lancaster and Palmdale which boasts an ADT of 18,436! This strategic, "mid-cities" location is convenient to the Antelope Valley Courthouse as well as the Palmdale Regional Medical Center! This west Palmdale locale is growing with the development of a number of professional and medical offices in the nearby "Freeway Business Park", making this property well suited for a wide spectrum of professional, medical and R & D uses!

DETAILS

PRICE:	REDUCED \$325,000 (\$3.71/sf) \$399,900
TERMS:	Cash or submit terms
APN:	3111-022-060
LOT SIZE:	2.01+/- net acres
UTILITIES:	All available <i>(buyer to verify)</i>
ZONING:	Office Flex (OF)

FOR MORE DETAILS CONTACT:

Harvey Holloway BRE #0594721
harvey@cbcvalleyrealty.com

Direct 661-948-2644 x 22
Cell 661-609-8173

Main 661-948-2644
Fax 661-945-2524

CBCValleyrealty.com

Coldwell Banker Commercial and the Coldwell Banker Commercial Logo are registered service marks licensed to Coldwell Banker Real Estate LLC. Each Office is Independently Owned and Operated.

42402 N. 10th Street West Ste "E"
Lancaster, CA 93534

10th West Development Site

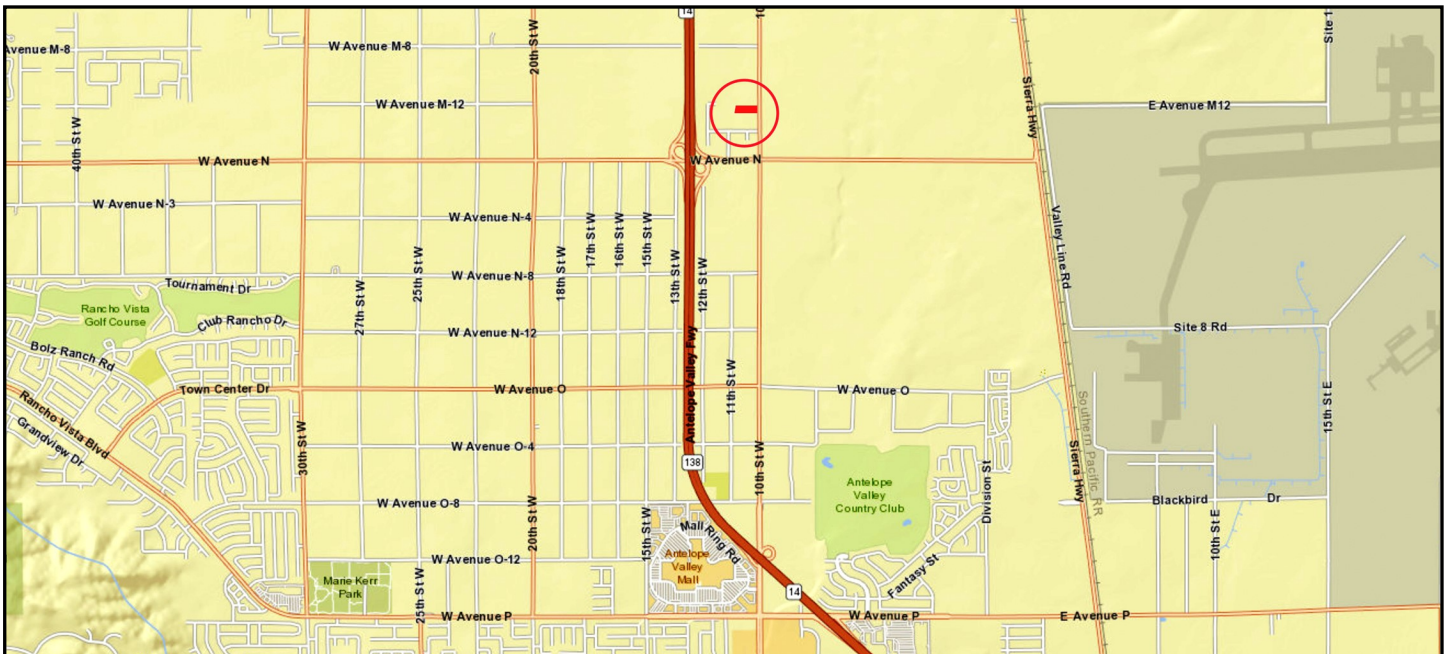
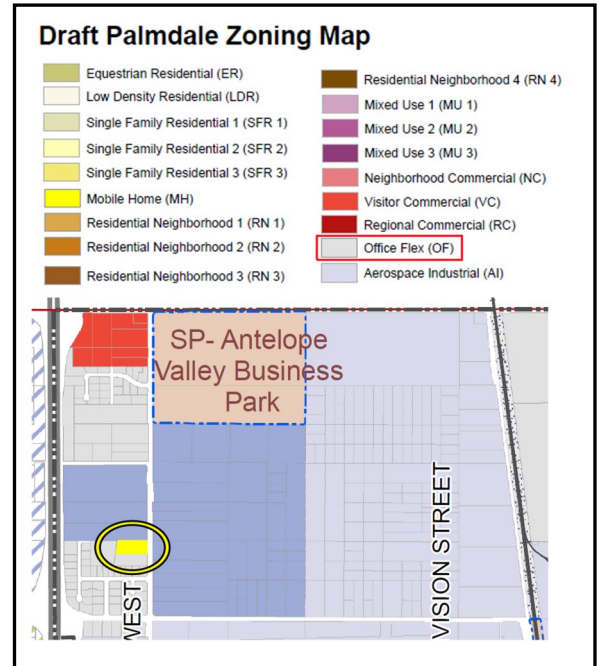
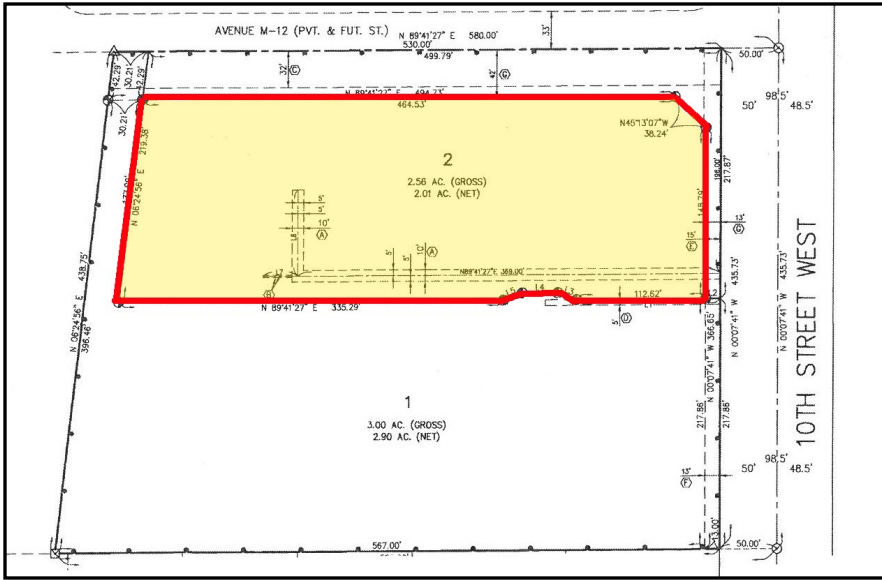
SWC 10th St West & Ave M-12

FOR SALE



Palmdale, CA 93551

VALLEY REALTY



FOR MORE DETAILS CONTACT:

Harvey Holloway BRE #0594721
harvey@cbcvalleyrealty.com

Direct 661-948-2644 x 22
 Cell 661-609-8173

Main 661-948-2644
 Fax 661-945-2524

CBCValleyrealty.com

Coldwell Banker Commercial and the Coldwell Banker Commercial Logo are registered service marks licensed to Coldwell Banker Real Estate LLC. Each Office is Independently Owned and Operated.

42402 N. 10th Street West Ste "E"
 Lancaster, CA 93534