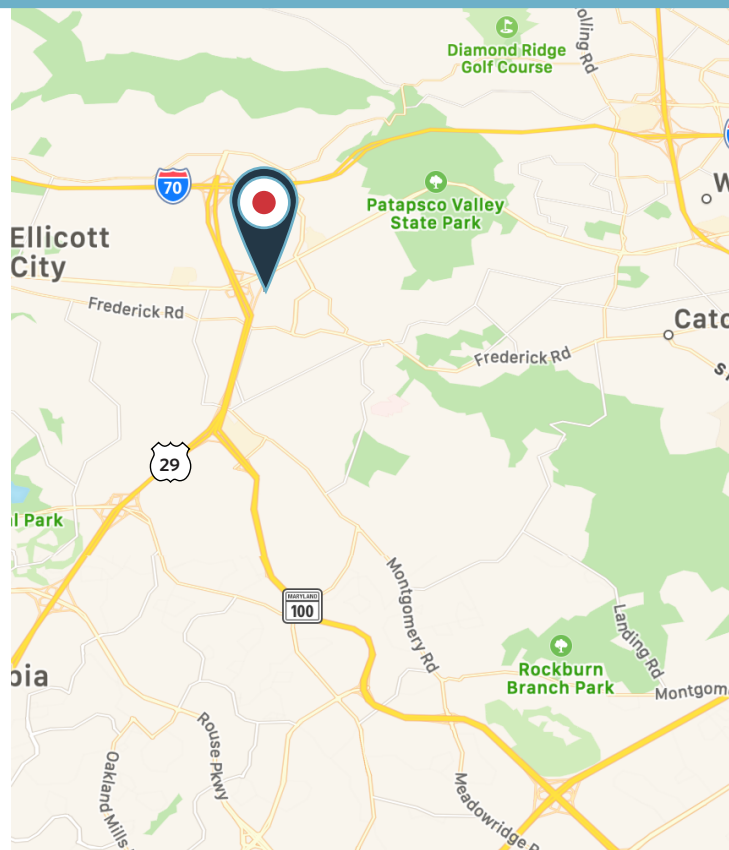




FOR SALE

## PROPERTY HIGHLIGHTS:

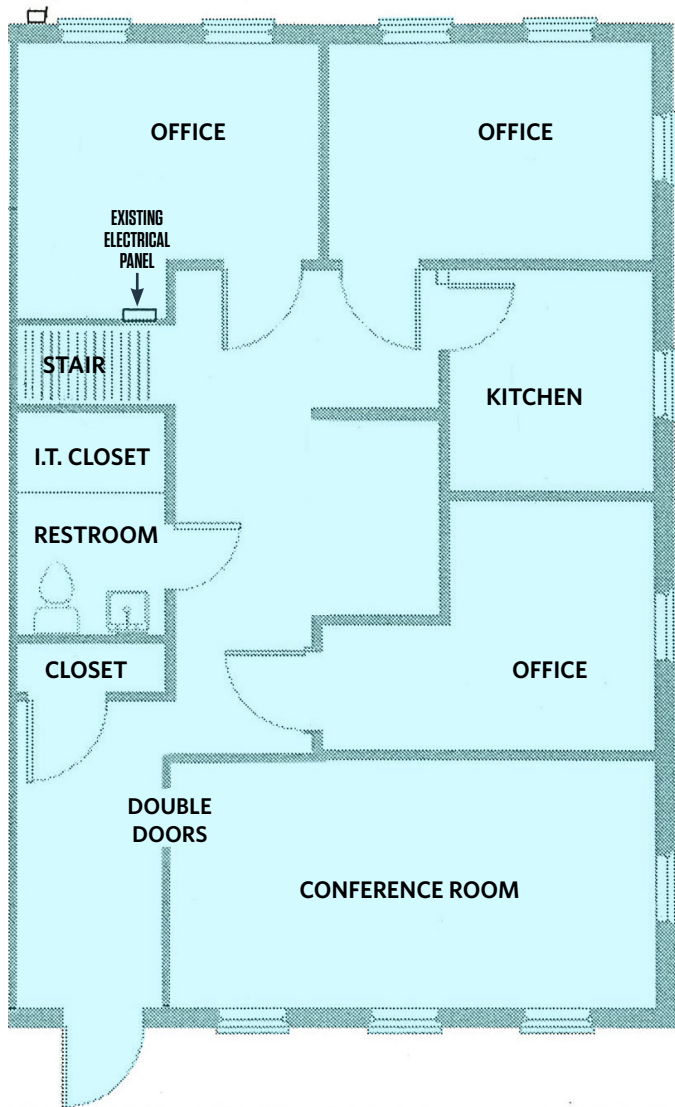
- **Medical/Office Space**
- **Suite 105:** Approximately 1,976 square feet
- **Sale Price:** \$500,000
- **Occupancy:** Immediate
- **Condo Fee:** \$425/month
- **Annual Real Estate Taxes:** \$3,885
- Two (2) floors with internal staircase
- End unit with three (3) sides of operable windows
- Currently built and used as a social work / therapist practice
- High end finishes
- Excellent access to Routes 70, 40, 32 & 29
- Ample parking
- HVAC system replaced September, 2020
- Some furniture may be available



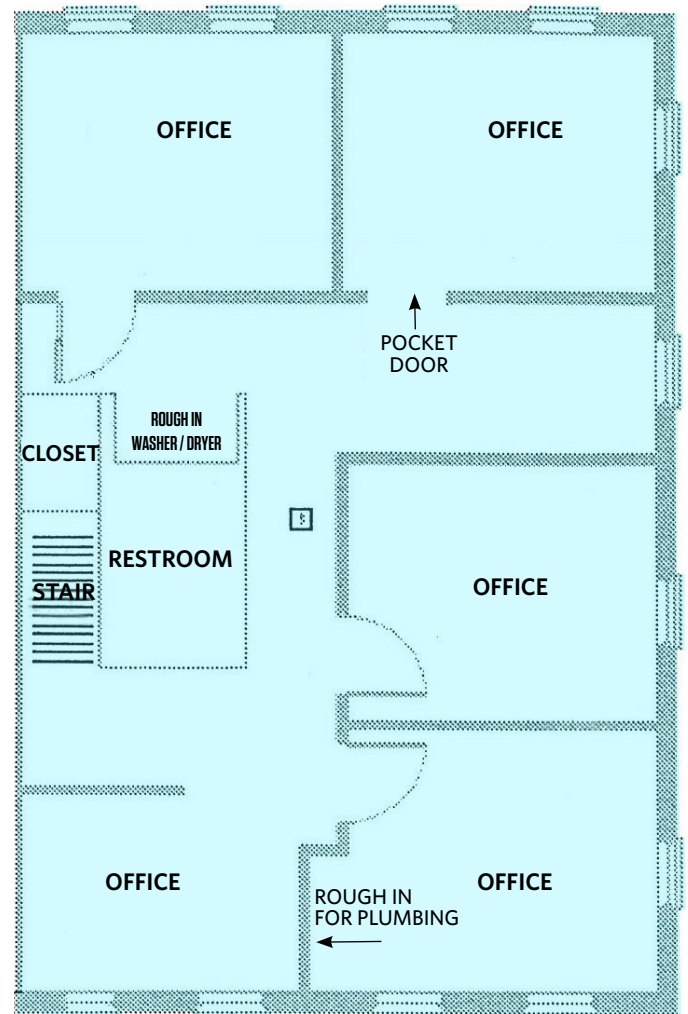
# 3448 ELLICOTT CENTER DRIVE

Ellicott City, MD 21043 | Howard County

## 1<sup>ST</sup> & 2<sup>ND</sup> FLOOR PLANS



1<sup>ST</sup> FLOOR PLAN



2<sup>ND</sup> FLOOR PLAN



## INTERIOR PHOTOS



# 3448 ELLICOTT CENTER DRIVE

Ellicott City, MD 21043 | Howard County

[CLICK TO VIEW PROPERTY WEBSITE](#)

For More Information, Please Contact:

**David J. Fritz, CCIM, SIOR**

[dfritz@klnb.com](mailto:dfritz@klnb.com)

443-574-1410

9881 Broken Land Parkway

Suite 300

Columbia, MD 21046

[klnb.com](http://klnb.com)



[instagram.com/klnbcre](https://www.instagram.com/klnbcre)



[linkedin.com/company/klnb](https://www.linkedin.com/company/klnb)



[facebook.com/KLNBCRE](https://www.facebook.com/KLNBCRE)

While we have no reason to doubt the accuracy of any of the information supplied, we cannot, and do not, guarantee its accuracy. All information should be independently verified prior to a purchase or lease of the property. We are not responsible for errors, omissions, misuse, or misinterpretation of information contained herein and make no warranty of any kind, express or implied, with respect to the property or any other matters.

