

SERENE RESIDENTIAL OR RECREATIONAL LOTS AVAILABLE

Lots 1-4 Green Creek Road, Schuyler, VA 22969

Executive Summary



OFFERING SUMMARY

Lot Size:	110.0 Acres 4 Parcels Available
Zoning:	A2
Utilities:	3 BD Conventional Approved (Each Lot) Electric Routed Internet Available
Schools:	Rockfish Elem Nelson Middle Nelson High
Disclosure:	Part Owner/Agent
MLS:	670286 (Lot 1) 670288 (Lot 2) 670316 (Lot 3) 670317 (Lot 4)

PROPERTY OVERVIEW

If you're looking for the perfect spot to create your own homesite, Airbnb Investment, or simply a quiet place to enjoy nature, you'll need to check out these lots. Located about 30 minutes south of Charlottesville and just minutes from the 151 Corridor with dozens of vineyards, breweries, distilleries and more to explore, you can enjoy the peace and quiet without being isolated. The land was timbered about 15 years ago and features replanted pines throughout and hardwoods along the creeks. Each parcel has a 3 Bedroom Conventional drain-field site already located and electric has been run underground along the road frontage. Firefly Fiber Optic High Speed internet also runs along the road frontage so you can escape to the rural beauty (and lower taxes!) of Nelson County and still stay connected! Accessibility is a cinch with plenty of road frontage and entrance options. The property features a great mix of level and rolling land with flowing water on 2 of the 4 tracts and all the necessary infrastructure at your fingertips to make further development easy. No HOA and only minimal restrictions.

AVAILABLE LOTS

- Lot 1 - 12.25 Acres - \$112,500
- Lot 2 - 8.54 Acres - \$76,500
- Lot 3 - 30.71 Acres - \$162,500
- Lot 4 - 60.51 Acres - \$349,500

For More Information:

Jeremy Litwiller
540.421.8293
jeremy.litwiller@cottonwood.com

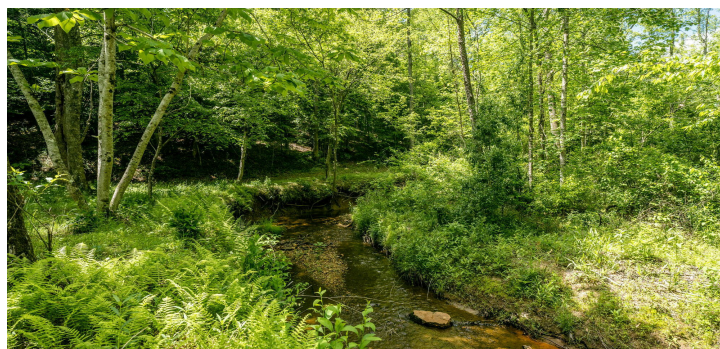
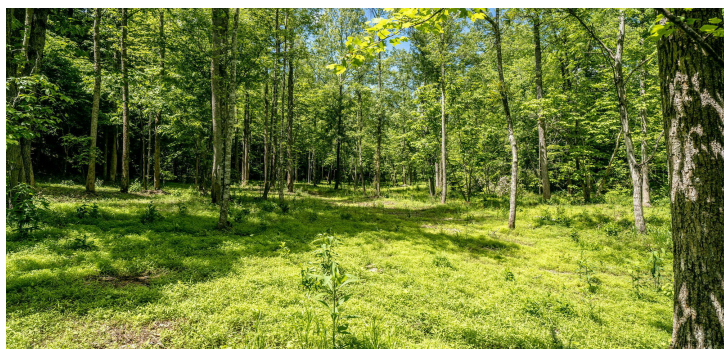
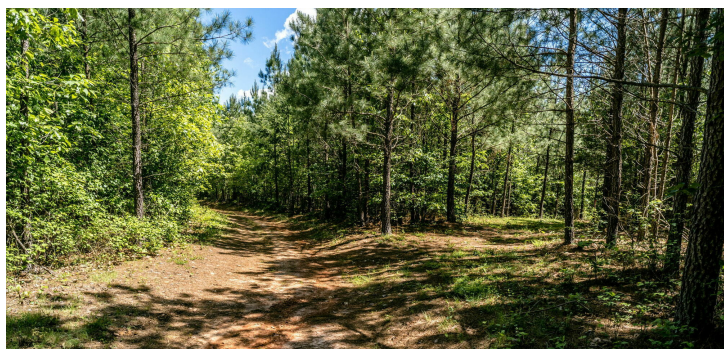
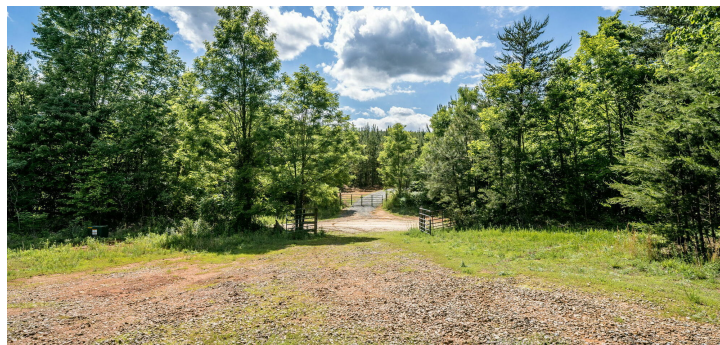
COTTONWOOD
COMMERCIAL
A COMMERCIAL REAL ESTATE BROKERAGE

We obtained the information above from sources we believe to be reliable. However, we have not verified its accuracy and make no guarantee, warranty or representation about it. It is submitted subject to the possibility of errors, omissions, change of price, rental or other conditions, prior sale, lease or financing, or withdrawal without notice. We include projections, opinions, assumptions or estimates for example only, and they may not represent current or future performance of the property. You and your tax and legal advisors should conduct your own investigation of the property and transaction.

SERENE RESIDENTIAL OR RECREATIONAL LOTS AVAILABLE

Lots 1-4 Green Creek Road, Schuyler, VA 22969

Additional Photos



For More Information:

Jeremy Litwiller

540.421.8293

jeremy.litwiller@cottonwood.com

COTTONWOOD
COMMERCIAL
A COMMERCIAL REAL ESTATE BROKERAGE

We obtained the information above from sources we believe to be reliable. However, we have not verified its accuracy and make no guarantee, warranty or representation about it. It is submitted subject to the possibility of errors, omissions, change of price, rental or other conditions, prior sale, lease or financing, or withdrawal without notice. We include projections, opinions, assumptions or estimates for example only, and they may not represent current or future performance of the property. You and your tax and legal advisors should conduct your own investigation of the property and transaction.



DICKERSON SURVEYING LLC

434-352-8560
Michael Roy Gair
Land Surveyor

THE QUINCY ASSOCIATION
INST. NO. 030006652
PLAT P.C. 4-27C
T.M. NO. 49-A-67

THE QUINN'S ASSOCIATION
INST. NO. 030006652
PAT. DC 4-270

THIS SUBPROVISION IS APPROVED FOR INDIVIDUAL ON-SITE SEWAGE SYSTEMS IN ACCORDANCE WITH THE PROVISIONS OF THE CODE OF FEDERAL AND THE STATE REGARDING AND DISPOSAL REGULATIONS (12 USC 5-610-10 ET SEQ. THE REGULATIONS), AND LOCAL ORDINANCES IF THE LOCALITY HAS AUTHORIZED THE LOCAL HEALTH DEPARTMENT TO ACCEPT PRIVATE EVALUATIONS FOR COMPLIANCE.

THIS SUBDIVISION WAS SUBMITTED TO THE HEALTH DEPARTMENT FOR REVIEW PURSUANT TO SECTION 37-161.5 OF THE CODE OF INDIANA WHICH REQUIRES THE HEALTH DEPARTMENT TO ACCEPT PRIVATE SOIL EVALUATIONS AND REPORTS FROM AN AUTHORIZED ONSITE SOIL EVALUATOR (AOSE) OR A PROFESSIONAL ENGINEER WORKING IN CONSULTATION WITH AN AOSE FOR RESIDENTIAL DEVELOPMENT. THE DEPARTMENT IS NOT REQUIRED TO PERFORM A FIELD CHECK OF SUCH EVALUATIONS. THIS SUBDIVISION WAS CARRIED AS BEING IN COMPLIANCE WITH THE BOARD OF HEALTH'S REGULATIONS ON HEALTHY LIFESTYLE AOSE. 14-000101235.

THIS SUBDIVISION APPROVAL IS ISSUED IN RELIANCE UPON THAT CERTIFICATION.

PURSUANT TO SECTION 360 OF THE REGULATIONS, THIS APPEAL IS NOT AN ASSURANCE THAT SERVICE DISPOSAL SYSTEM CONSTRUCTION PERMITS WILL BE ISSUED FOR ANY LOT IN THE SUBDIVISION UNLESS THAT LOT IS SPECIFICALLY IDENTIFIED AS HAVING AN APPROVED SORT FOR AN ONSITE SERVICE DISPOSAL SYSTEM, AND UNLESS ALL CONDITIONS AND CIRCUMSTANCES ARE PRESENT AT THE TIME OF APPLICATION FOR A PERMIT AS ARE PRESENT AT THE TIME OF THIS APPEAL. THIS SUBDIVISION MAY CONTAIN LOTS THAT DO NOT HAVE APPROVED SIZES FOR ONSITE SERVICE SYSTEMS.

THE APPROVED DASHIE SEWAGE SYSTEM AND WELL SITES ARE NOT SHOWN ON THIS PLAT. THOSE SITES ARE SHOWN ON A SEPARATE PLAT ON FILE IN THE NELSON COUNTY HEALTH DEPARTMENT.

HEALTH OFFICIAL _____ DATE _____

FORWARDED BY
SINCE 1917

NO. 49-4-2

E. W. &
M. S. CAMPBELL

U.S. 1/1 P.3/6
NO. 49-4-1

Graphic scale - feet

0 300 600 900

30 11. PRESCRIPTIVE R/W

60.508 Ac

30.710 Ac.

SEE NOTE 10

ALYSSA CUMMENCE &

REDUCED COPY

MICHAEL RAY COIN
Lic. No. 3143

SHEET 2 OF 2

DIVISION SURVEY

160.602 Ac. Total

SCHUMLER DISTRICT NELSON COUNTY

MAY 16, 2017 &
JULY 29, 2021 SEE NOTE 9
DIVISION JUNE 26, 2025

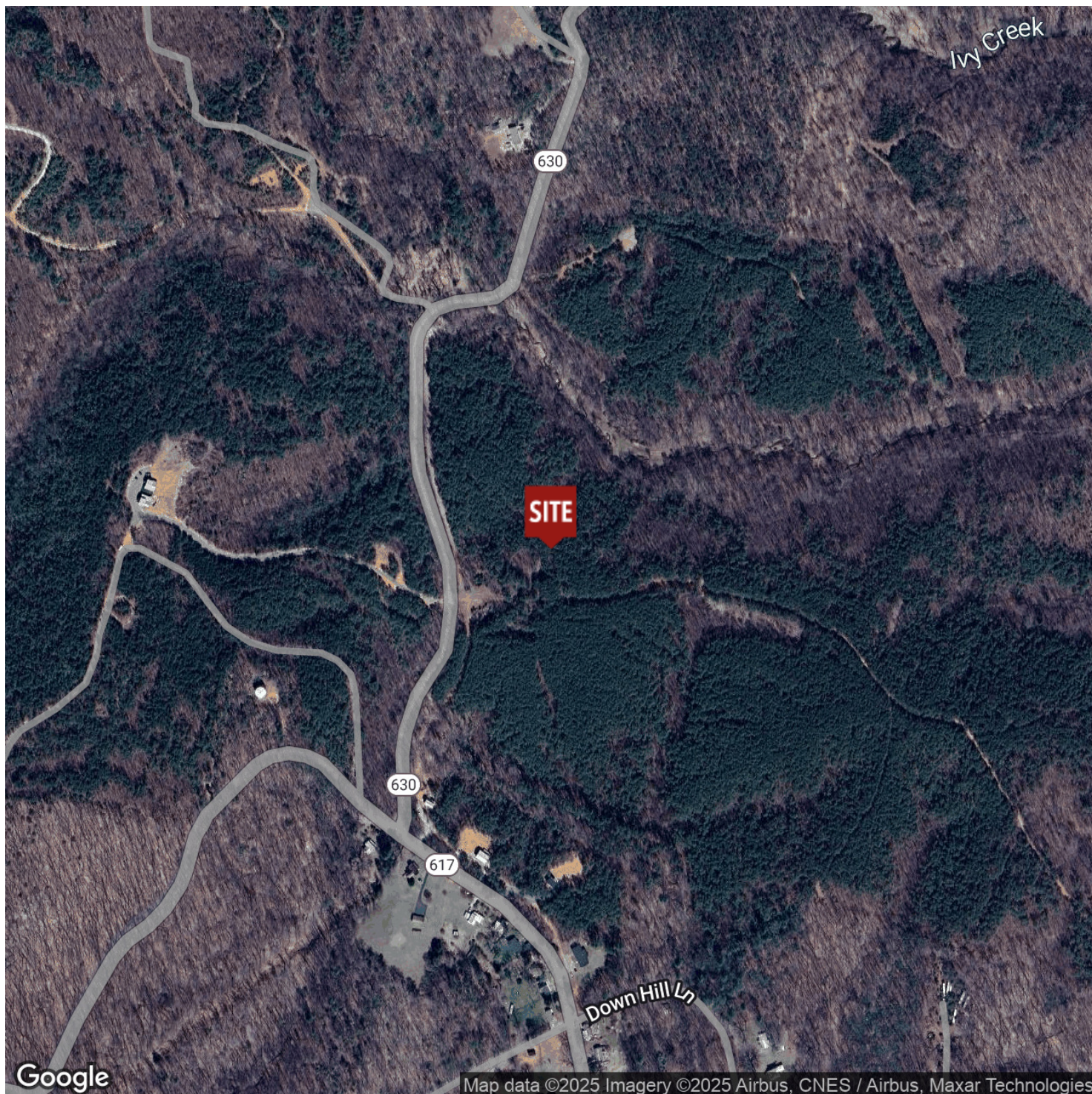
GRAPHIC SCALE - FEET

0 300 600 900

SERENE RESIDENTIAL OR RECREATIONAL LOTS AVAILABLE

Lots 1-4 Green Creek Road, Schuyler, VA 22969

Location Map



For More Information:

Jeremy Litwiller

540.421.8293

jeremy.litwiller@cottonwood.com

COTTONWOOD
COMMERCIAL
A COMMERCIAL REAL ESTATE BROKERAGE

We obtained the information above from sources we believe to be reliable. However, we have not verified its accuracy and make no guarantee, warranty or representation about it. It is submitted subject to the possibility of errors, omissions, change of price, rental or other conditions, prior sale, lease or financing, or withdrawal without notice. We include projections, opinions, assumptions or estimates for example only, and they may not represent current or future performance of the property. You and your tax and legal advisors should conduct your own investigation of the property and transaction.