

# 98-1238 KA'AHUMANU STREET

Pearl City, Hawaii 96782

## FOR LEASE

Retail/Office Space



## PROPERTY DESCRIPTION

Discover an exceptional opportunity at the Kaahumanu Building, a rarely available space in the heart of Pearl City. Enjoy outstanding visibility from Kaahumanu Street, just steps away from Waimanu Shopping Center and a variety of restaurants. This vibrant hub is home to a diverse mix of office, medical, and professional tenants, making it an ideal location for your business. With convenient on-site parking, your clients and staff will have easy access.

Space Available:	Size:	Rent:
Space 102	953 SF	\$3.50 / SF / MO
Space 400	1,770 SF	\$1.75 / SF / MO

## PROPERTY SNAPSHOT

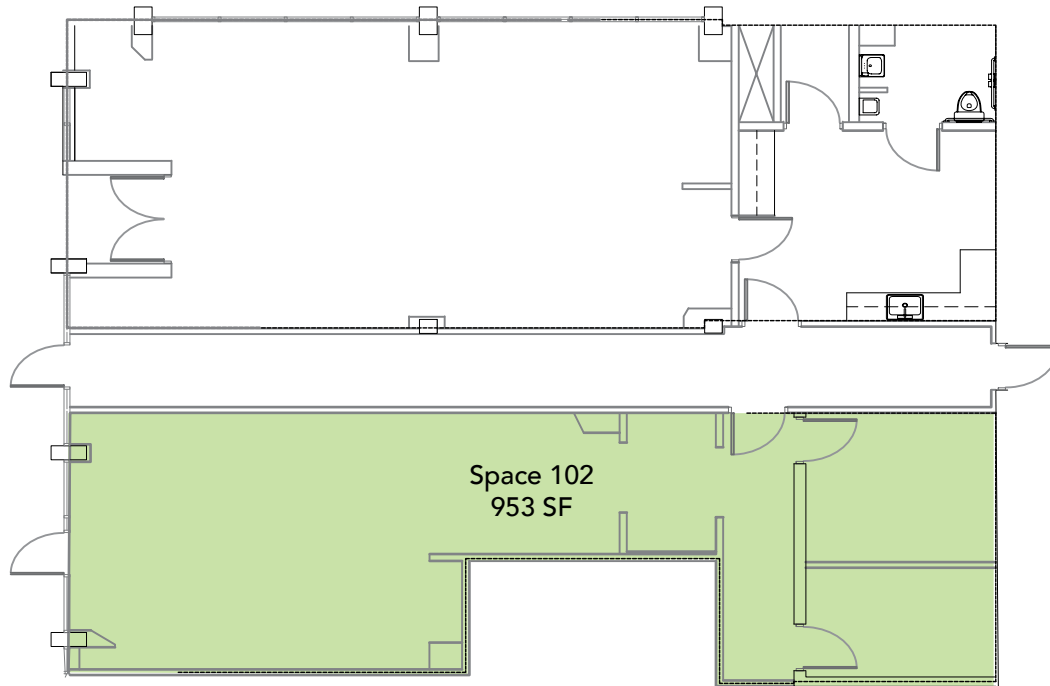
Location:	Pearl City
Property Type:	Retail/Office/Medical
TMK:	(1) 9-8-8-33
Rent:	\$1.65 - \$3.50 / SF / Month
CAM:	\$2.36 / SF / Month
Building Size:	30,686
Tenant Parking:	\$125.00 / month per stall, plus GET
Customer Parking:	Free on the 2nd level
Zoning:	B-2
AC Hours:	Monday - Sunday 6:00 am to 7:30pm

©2025 Sofos Realty Corporation. All information contained herein is obtained from sources deemed reliable. However, no representations or guarantees are made as to the accuracy thereof, and it is provided herein subject to errors, omissions, changes and withdrawals without notice. Offeror and/or his agent should confirm this information prior to making any offer. Buyer agrees that all negotiation shall be conducted through Sofos Realty Corporation only. No subagency is offered or intended.

 **SOFOS REALTY**  
CORPORATION  
Commercial Brokerage • Property Management

# FLOOR PLAN

KAAHUMANU ST.

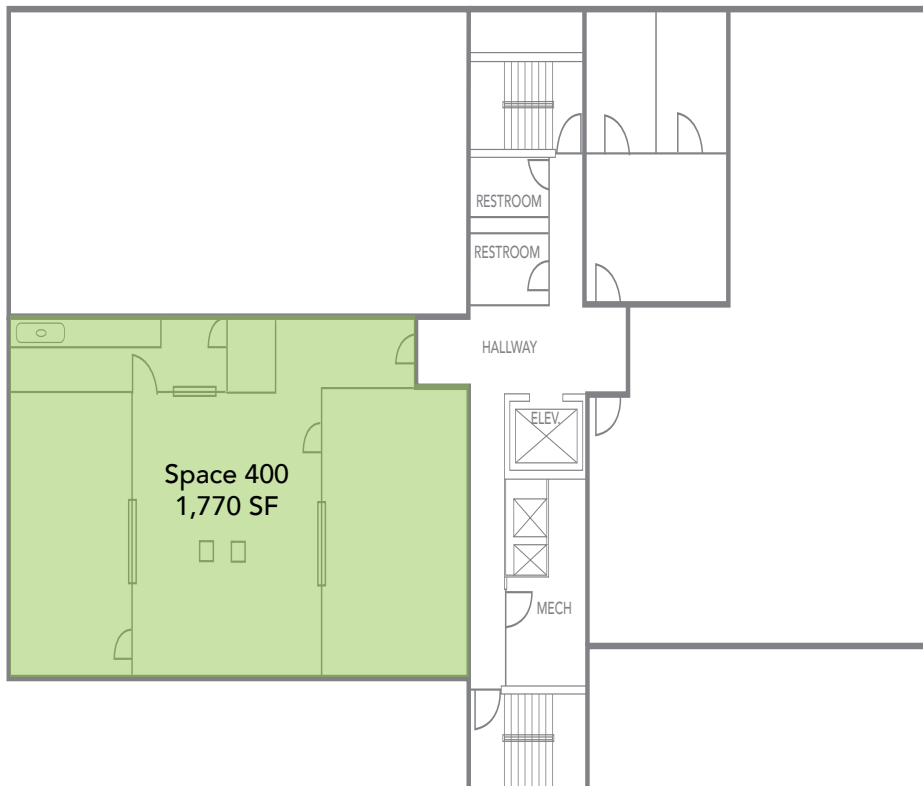


## FIRST FLOOR

### AVAILABILITY

Unit	Size
102	953 SF

KAAHUMANU ST.



## 4TH FLOOR

### AVAILABILITY

Unit	Size
400	1,770 SF

Floor Plans are for marketing purposes only and may not accurately reflect the property.