

Office Space For Lease

2901 Cleveland Avenue, Santa Rosa, CA



Suite 204: Approx. 2008 Sq.Ft. Available
\$1.70 Per Square Foot, Gross

FEATURES INCLUDE:

- 4 Private Offices, Conference Room
- Attractive, New Interiors
- Nice Window Line With Views From Private Balcony
- Great Location Near County Center, Courts, Coddington, Restaurants, Banks
- Second Floor With Elevator
- Signage On Monument Available
- Easy Access From Hwy 101
- Excellent On-Site Parking
- Kitchen, Break Room
- Private Balcony
- IT Room



Paul Schwartz

707.479.1841

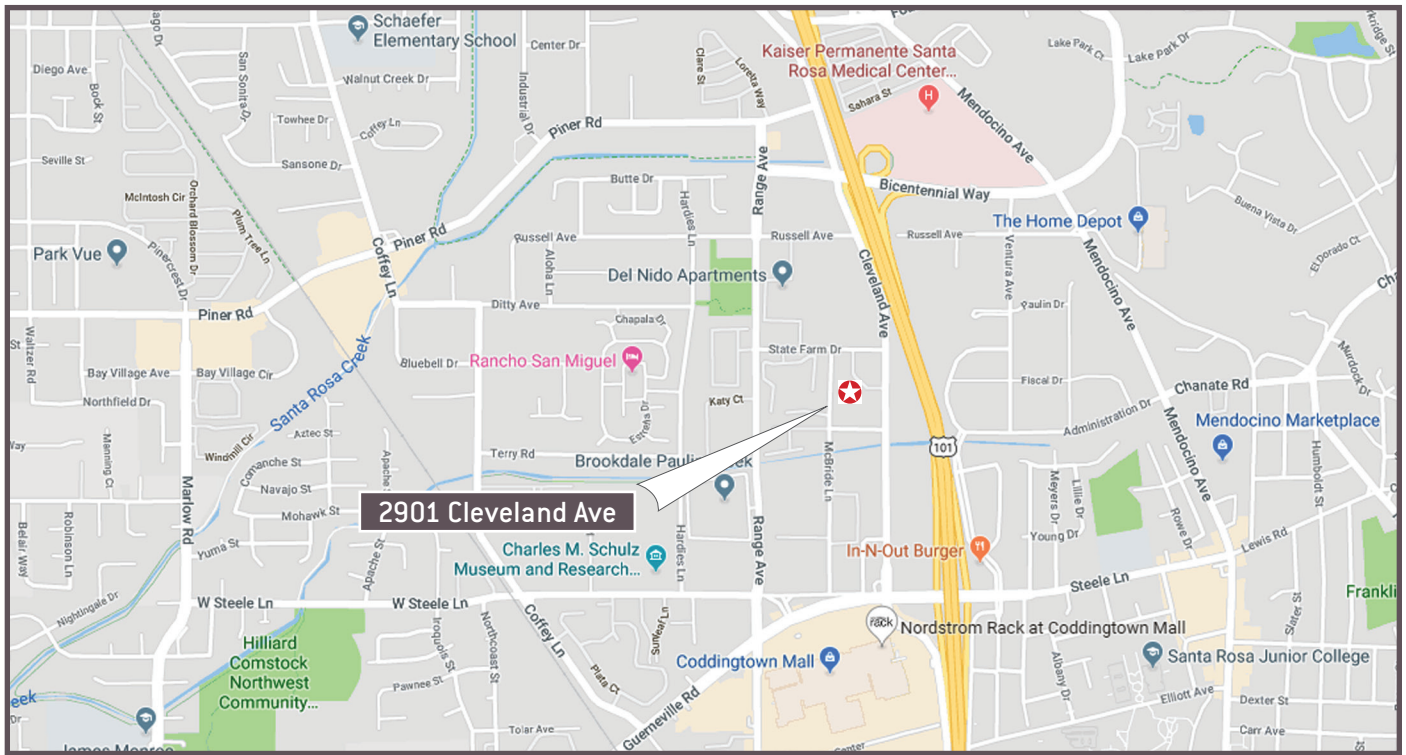
SchwartzBroker@gmail.com

CalBRE#01111744

Terra Firma Global Partners
802 Fourth St., Santa Rosa, CA 95404
800.681.1361
www.TerraFirmaGlobalPartners.com



AREA STREET MAP



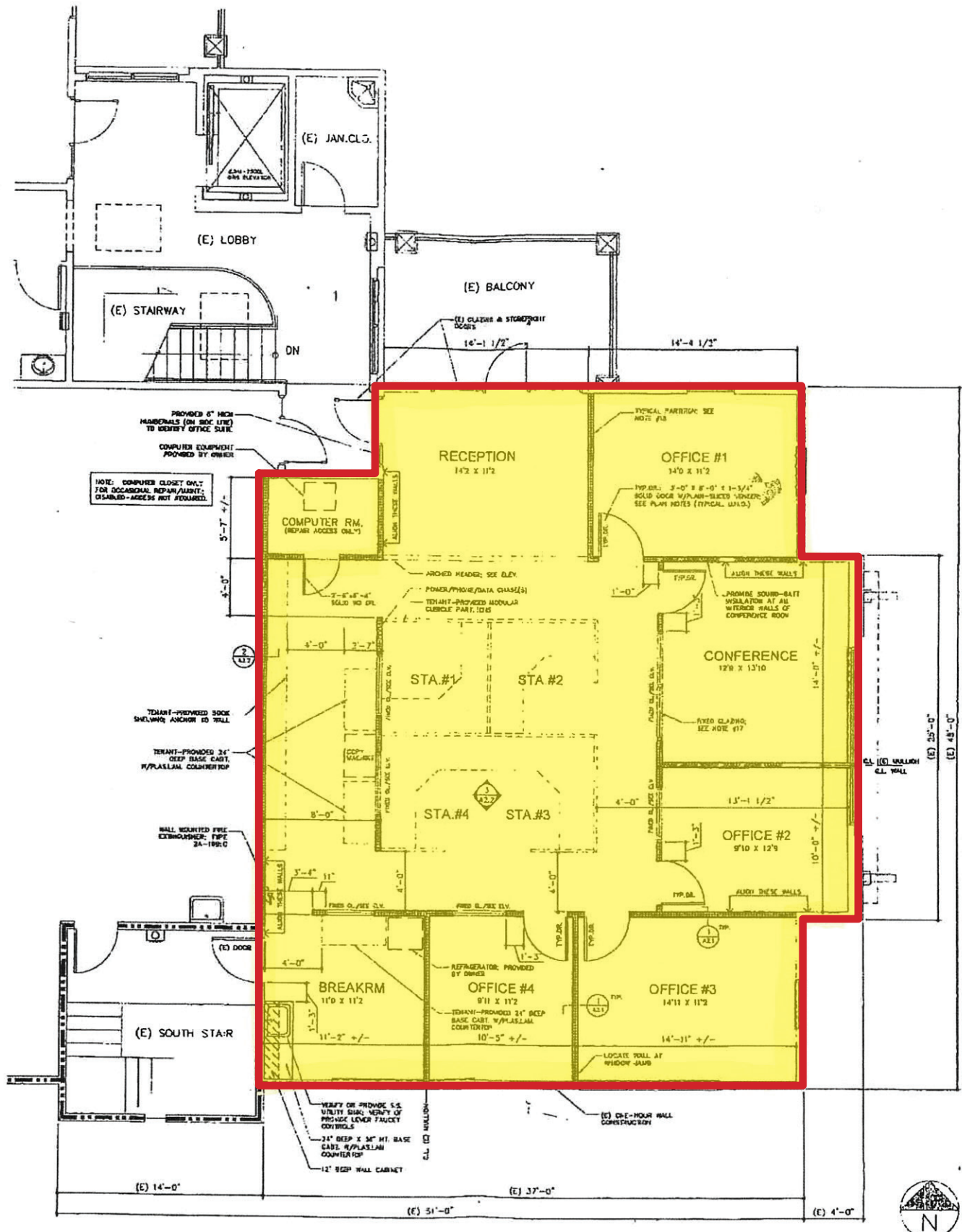
AREA AMENITIES

The 2901 Cleveland Avenue building is conveniently located in a very active commercial area in close proximity to the Coddington Regional Shopping Center with major restaurants and business services, near the U.S. Post Office, numerous banks and credit unions, the County of Sonoma administrative center/courts, and convenient bus and transit services.

The building is situated along the Hwy. 101 corridor approximately 2 miles north of Downtown Santa Rosa and 2 miles south of the Charles Schulz Sonoma County Airport. This central Santa Rosa location provides convenient access for employees of building tenants. There is commercial airline service from Santa Rosa to several western and southern cities including San Francisco, Denver, Los Angeles, San Diego, Portland, Las Vegas and Seattle. Corporate executives and Sonoma County visitors can travel from Santa Rosa to cities and connecting flights throughout the western U.S.

In addition, the Sonoma-Marin Area Rail Transit (SMART) train, a regional commuter rail line, now serves the North Bay. The nearest train station is approximately one mile from the Cleveland Avenue building, providing easy travel north and south along the Hwy. 101 corridor. The train service currently extends to San Rafael to the south and the Sonoma County Airport to the north.

FLOORPLAN



BUILDING PHOTOS

