

FOR SALE

14.99 ACRES ON CHICAGO'S NORTH SHORE

2056 Half Day Road Highland Park, IL 60035



OFFERING SUMMARY

Sale Price	\$1,375,000
Zoned R-3	Current Residence 4,100 SF
Taxes 2023	\$24,995
Lot Size	14.99 Acres
Price / Acre	\$91,728

PROPERTY OVERVIEW

Very Private Highland Park Family Retreat Site With 5-Bedroom House & 14.99 Acres (4+ Acres Buildable) That Needs Minimal Updating. Adjacent To Lovely Prairie Wolf Forest Preserve, Conveniently Between I-41 & I-94, Within Walking Distance From Retail Such As Mariano's & Walgreen's & Bannockburn Green Restaurants. For Sale With Neighboring Parcel As Full 35-Acres (10+ Acres Buildable) Is \$4,300,000. Note: Property Entrance at Landon Lane in Highland Park.



Sheryl Fisher

Commercial Broker

312.988.9070

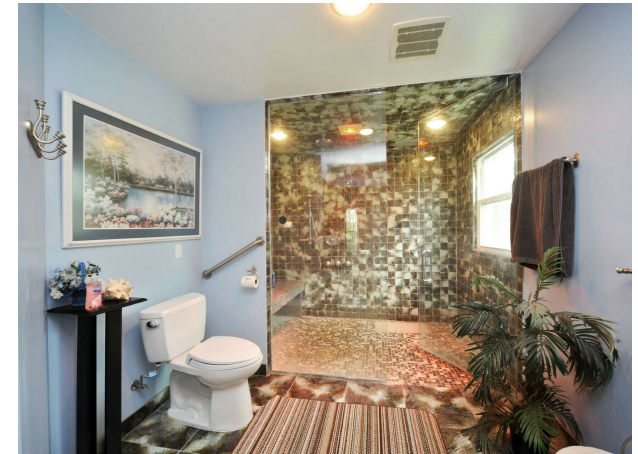
sherylfisher@cbcnrt.com



COLDWELL BANKER
COMMERCIAL
REALTY

PHOTOGRAPY

2056 HALF DAY ROAD IN HIGHLAND PARK IL 60035

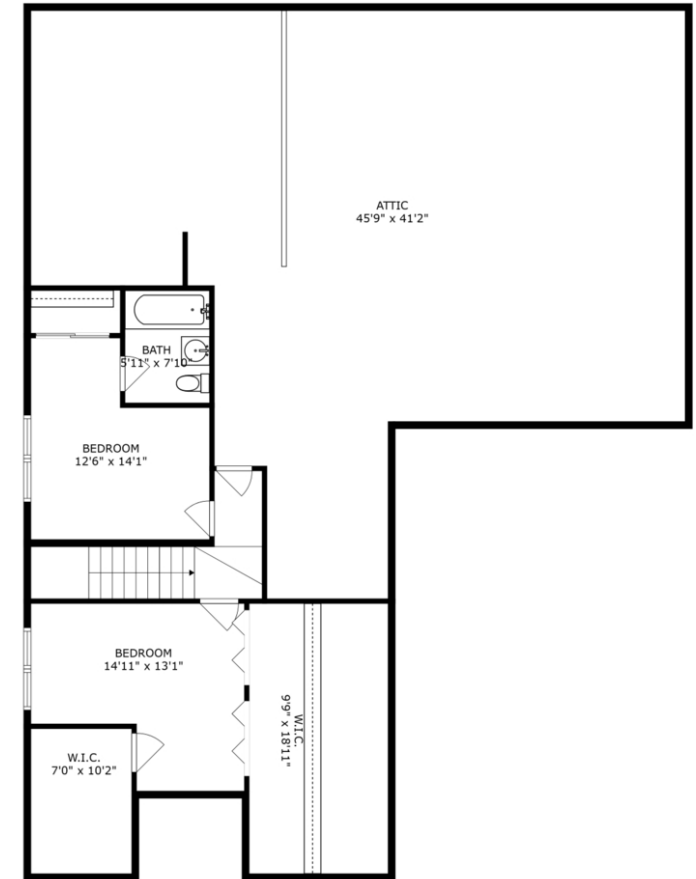
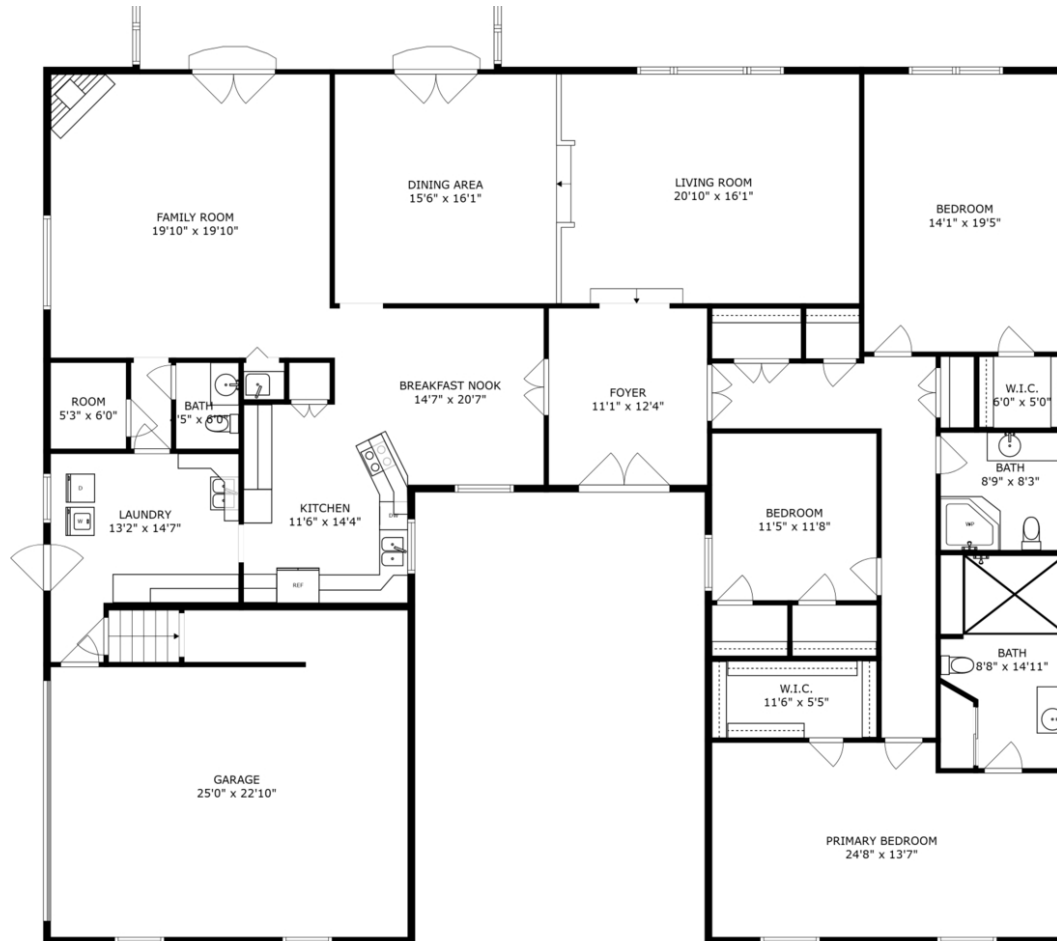


Sheryl Fisher
Commercial Broker
312.988.9070
sherylfisher@cbcnrt.com



FLOORPLANS

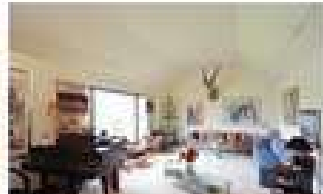
2056 HALF DAY ROAD IN HIGHLAND PARK IL 60035



Sheryl Fisher
Commercial Broker
312.988.9070
sherylfisher@cbcncrt.com



COLDWELL BANKER
COMMERCIAL
REALTY



Sheryl Fisher
Commercial Broker
312.988.9070
sherylfisher@cbcnrt.com

