

# PACIFIC FINANCIAL CENTER

800 W 6TH ST | LOS ANGELES, CA 90017

*Spaces for lease in a 227K SF,  
18-story office tower located in the  
heart of Downtown Los Angeles.*

From ±1,160 - 8,839 SF of office space available

Prime central downtown location, proximity to  
freeways and Metro rail station

Class A premier office building

Fully built out spaces immediately available

**\$33.00**

LEASE RATE (SF/YR) FSG

**3 MIN**

WALK TO METRO RAIL

**JOHN ANTHONY, SIOR**

213.225.7218 | john.anthony@kidder.com

LIC N° 01226464

**CHRISTOPHER STECK, CCIM**

213.225.7231 | christopher.steck@kidder.com

LIC N° 01841338

**KIDDER.COM**

This information supplied herein is from sources we deem reliable. It is provided without any representation, warranty, or guarantee, expressed or implied as to its accuracy. Prospective Buyer or Tenant should conduct an independent investigation and verification of all matters deemed to be material, including, but not limited to, statements of income and expenses. Consult your attorney, accountant, or other professional advisor.



FOR LEASE



### PROPERTY HIGHLIGHTS

New ground-floor full service restaurant with outdoor patio and bar

Newly renovated lobby and common areas

On-site parking with charging stations and car wash

New elevator cabs and street-level elevator

On-site property management and ownership

24/7 security and access

Aggressive rent and concession packages available

Flexible lease structure

KIDDER.COM

This information supplied herein is from sources we deem reliable. It is provided without any representation, warranty, or guarantee, expressed or implied as to its accuracy. Prospective Buyer or Tenant should conduct an independent investigation and verification of all matters deemed to be material, including, but not limited to, statements of income and expenses. Consult your attorney, accountant, or other professional advisor.



*Availabilities*

	Rentable SF	Description
Suite 320	2,907 SF	New spec suite - reception, open kitchen, conference room and open area
Suite 400	4,881 SF	Reception, conference room, 7 perimeter offices, open area and kitchen
Suite 700	7,115 SF	Reception, conference room, 9 offices, workstations, IT room, storage and kitchen
Suite 920*	1,496 SF	Reception, 2 offices, workstation and kitchen/work room
Suite 1010	1,739	Reception, conference room, open plan with kitchen
Suite 1020	1,160 SF	Reception, 2 offices, storage/file room and open area
Suite 1250*	6,240 SF	Double door elevator ID, reception, 12 offices, 18 work stations, work room, conference room, kitchen, server room and storage
Suite 1420	1,451 SF	Reception, 3 offices, conference room, workstations and kitchen
Suite 1500	7,136 SF	Double door reception, copy room, private restrooms, conference room, 11 offices, file room and IT room

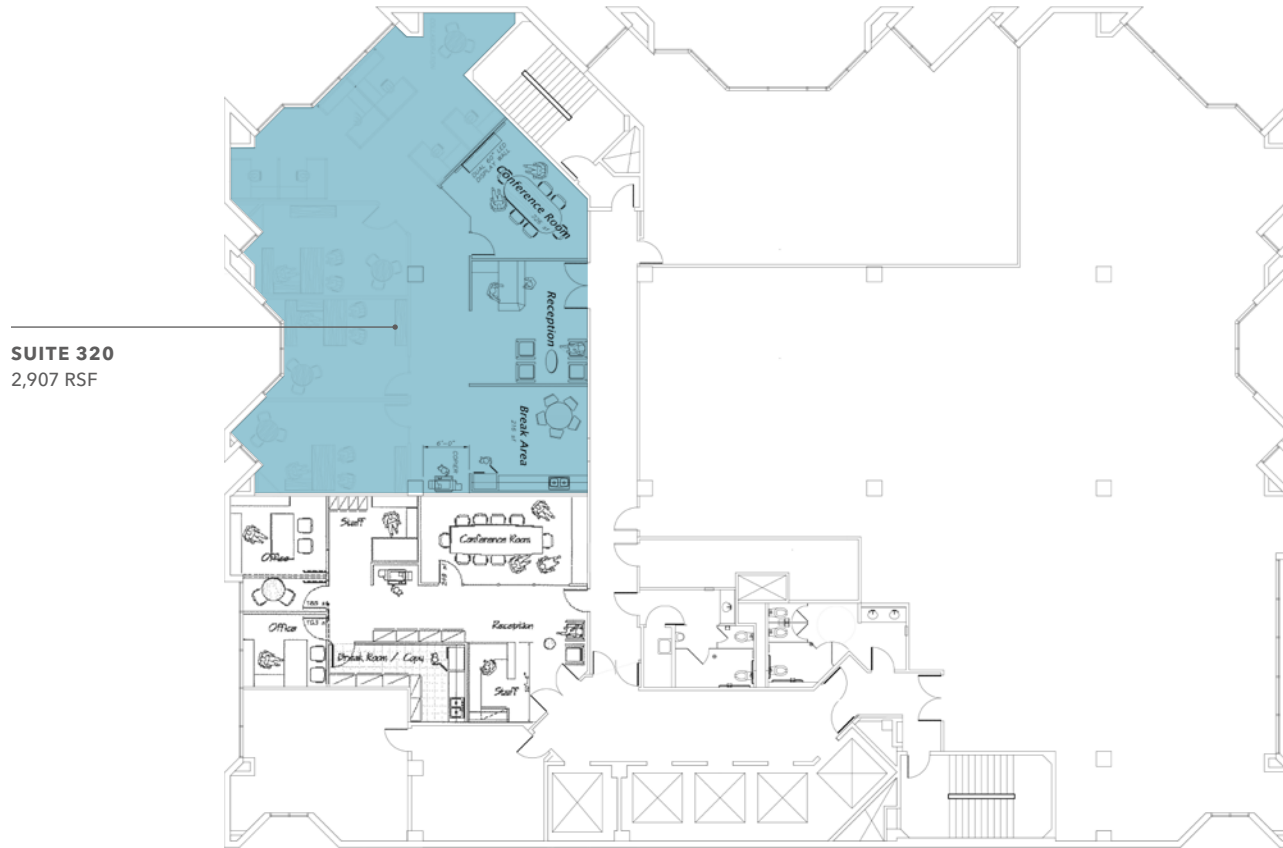
\*These suites are under a special marketing program in which the Landlord will provide 2 months of free rent per year on a paint and carpet deal.



KIDDER.COM

This information supplied herein is from sources we deem reliable. It is provided without any representation, warranty, or guarantee, expressed or implied as to its accuracy. Prospective Buyer or Tenant should conduct an independent investigation and verification of all matters deemed to be material, including, but not limited to, statements of income and expenses. Consult your attorney, accountant, or other professional advisor.

# 3RD FLOOR



**SUITE 320**  
2,907 RSF

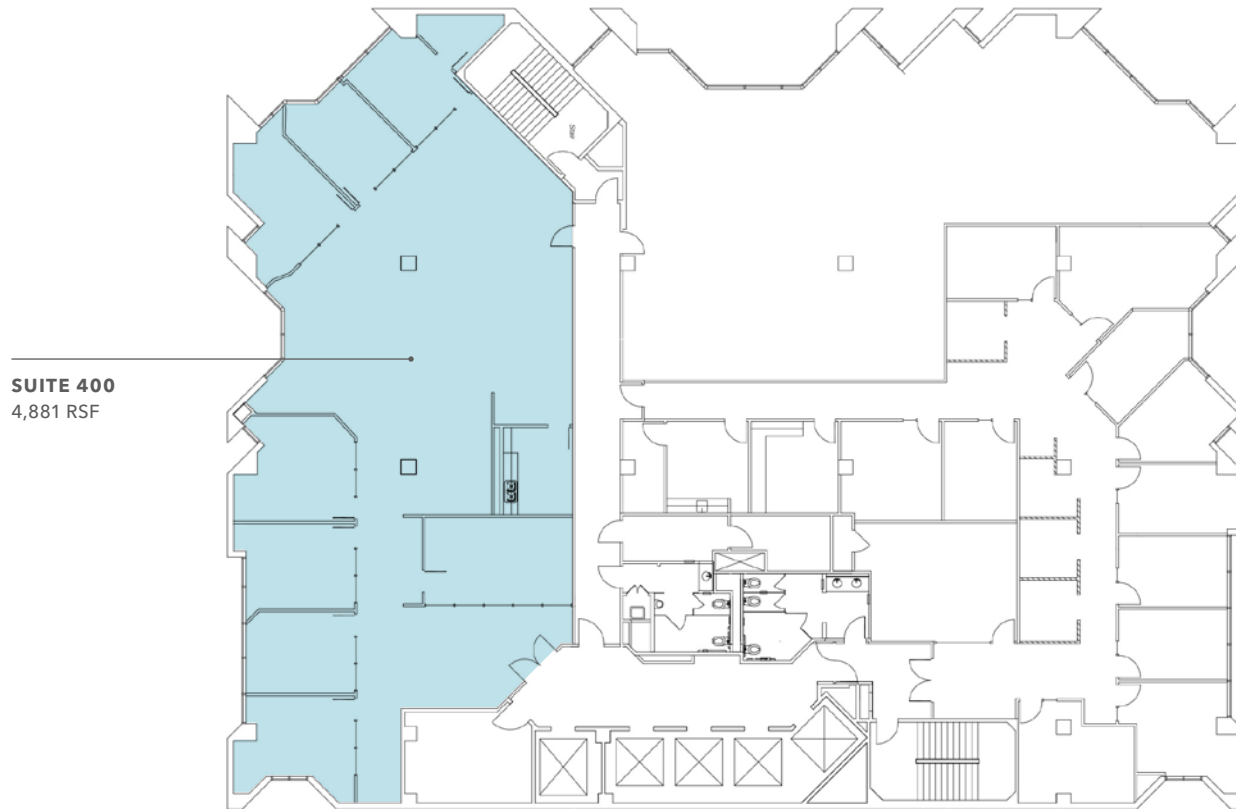
## AVAILABILITIES

	Rentable SF	Description
SUITE 320	2,907 SF	New spec suite - reception, open kitchen, conference room, open area

## KIDDER.COM

This information supplied herein is from sources we deem reliable. It is provided without any representation, warranty, or guarantee, expressed or implied as to its accuracy. Prospective Buyer or Tenant should conduct an independent investigation and verification of all matters deemed to be material, including, but not limited to, statements of income and expenses. Consult your attorney, accountant, or other professional advisor.

# 4TH FLOOR



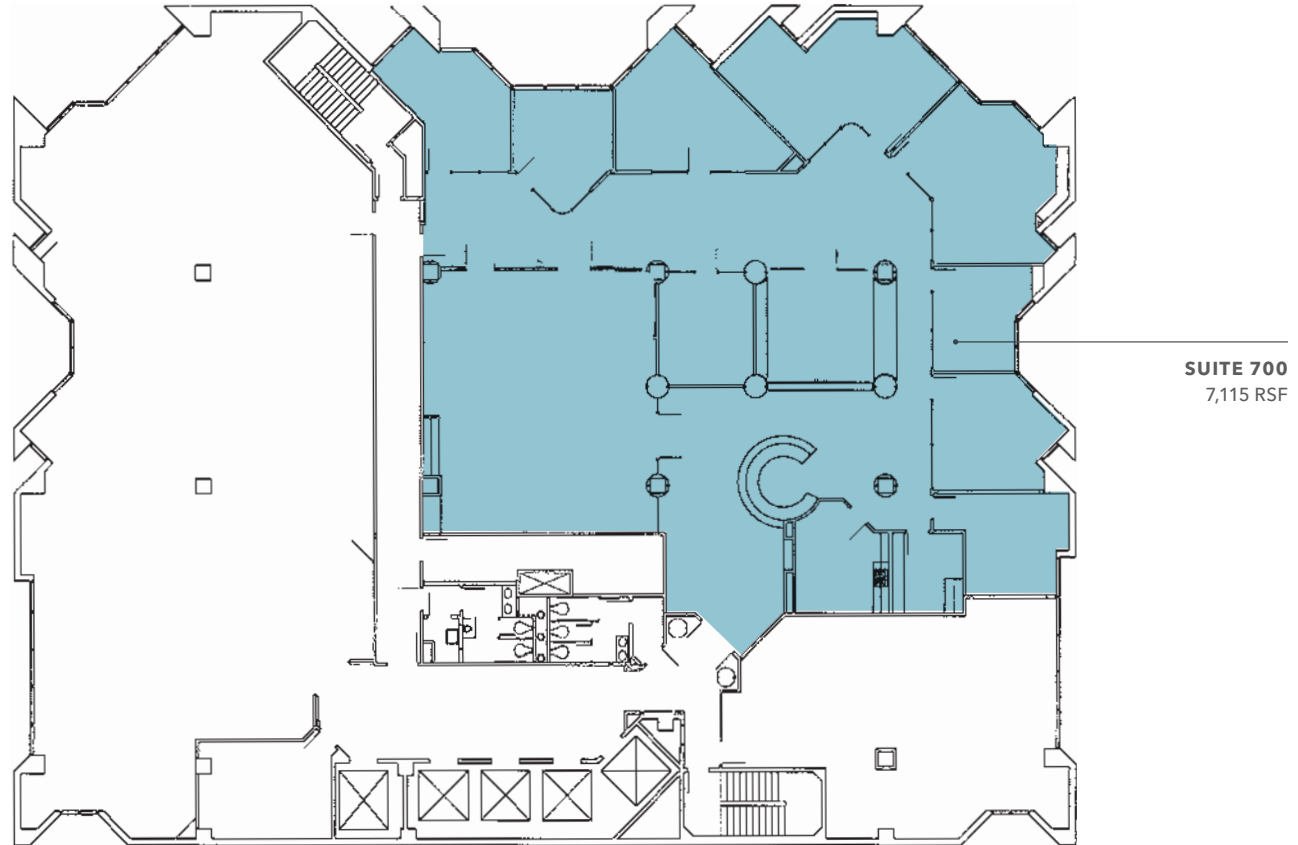
## SUITE AVAILABILITY

	Rentable SF	Description
SUITE 400	4,881 SF	Reception, conference room, 7 perimeter offices, open area and kitchen

## KIDDER.COM

This information supplied herein is from sources we deem reliable. It is provided without any representation, warranty, or guarantee, expressed or implied as to its accuracy. Prospective Buyer or Tenant should conduct an independent investigation and verification of all matters deemed to be material, including, but not limited to, statements of income and expenses. Consult your attorney, accountant, or other professional advisor.

# 7TH FLOOR



**SUITE 700**  
7,115 RSF

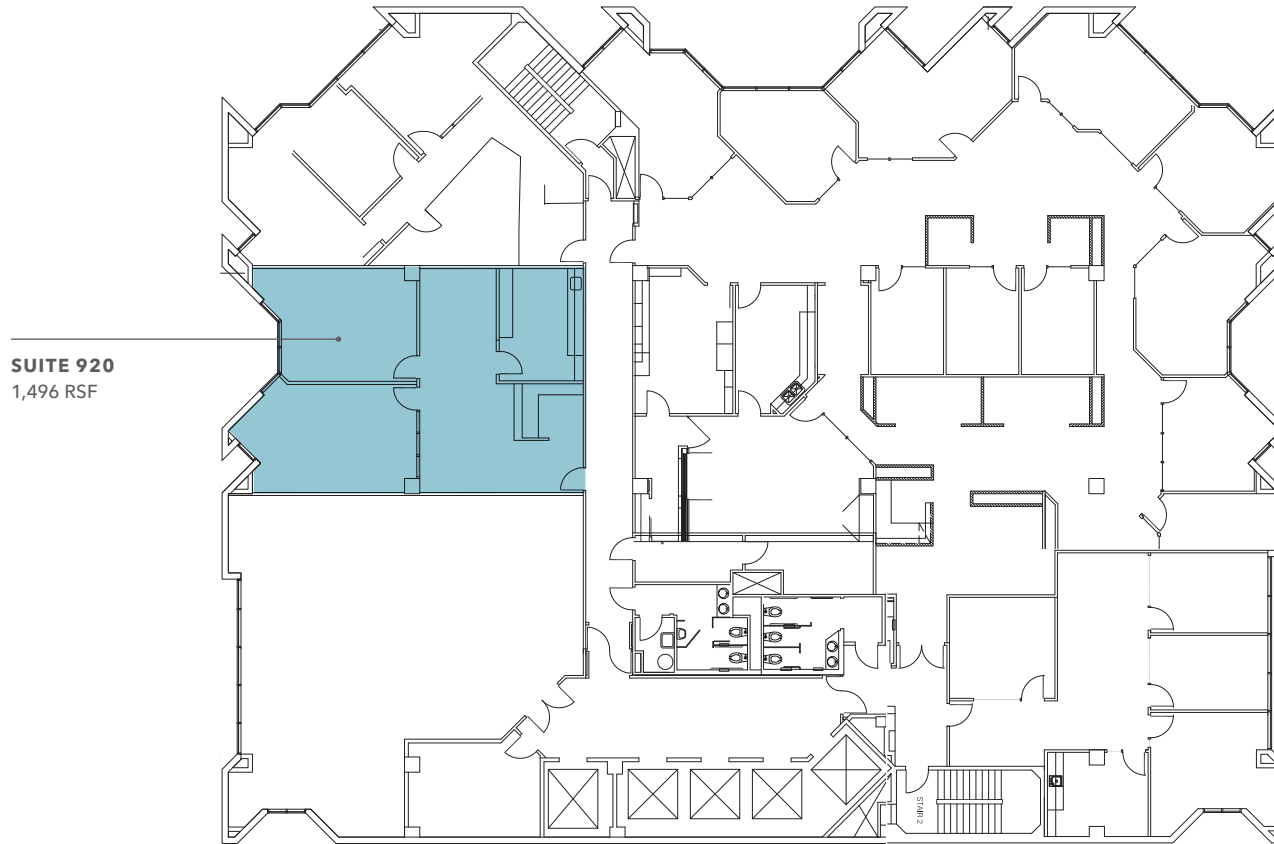
## SUITE AVAILABILITY

	Rentable SF	Description
SUITE 700	7,115 SF	Reception, conference room, 9 offices, workstations, IT room, storage and kitchen

## KIDDER.COM

This information supplied herein is from sources we deem reliable. It is provided without any representation, warranty, or guarantee, expressed or implied as to its accuracy. Prospective Buyer or Tenant should conduct an independent investigation and verification of all matters deemed to be material, including, but not limited to, statements of income and expenses. Consult your attorney, accountant, or other professional advisor.

# 9TH FLOOR



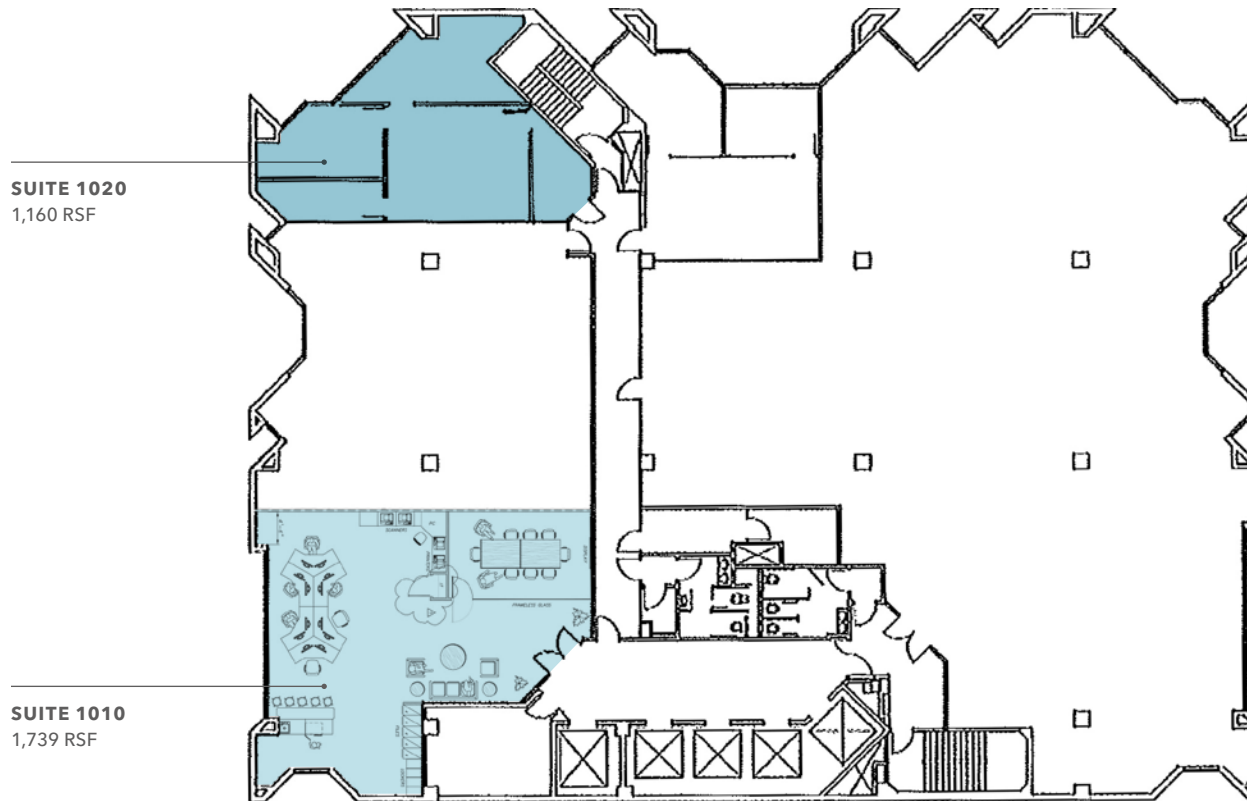
## SUITE AVAILABILITY

	Rentable SF	Description
SUITE 920	1,496 SF	Reception, 2 offices, workstation, kitchen/work room

## KIDDER.COM

This information supplied herein is from sources we deem reliable. It is provided without any representation, warranty, or guarantee, expressed or implied as to its accuracy. Prospective Buyer or Tenant should conduct an independent investigation and verification of all matters deemed to be material, including, but not limited to, statements of income and expenses. Consult your attorney, accountant, or other professional advisor.

# 10TH FLOOR



## SUITE AVAILABILITY

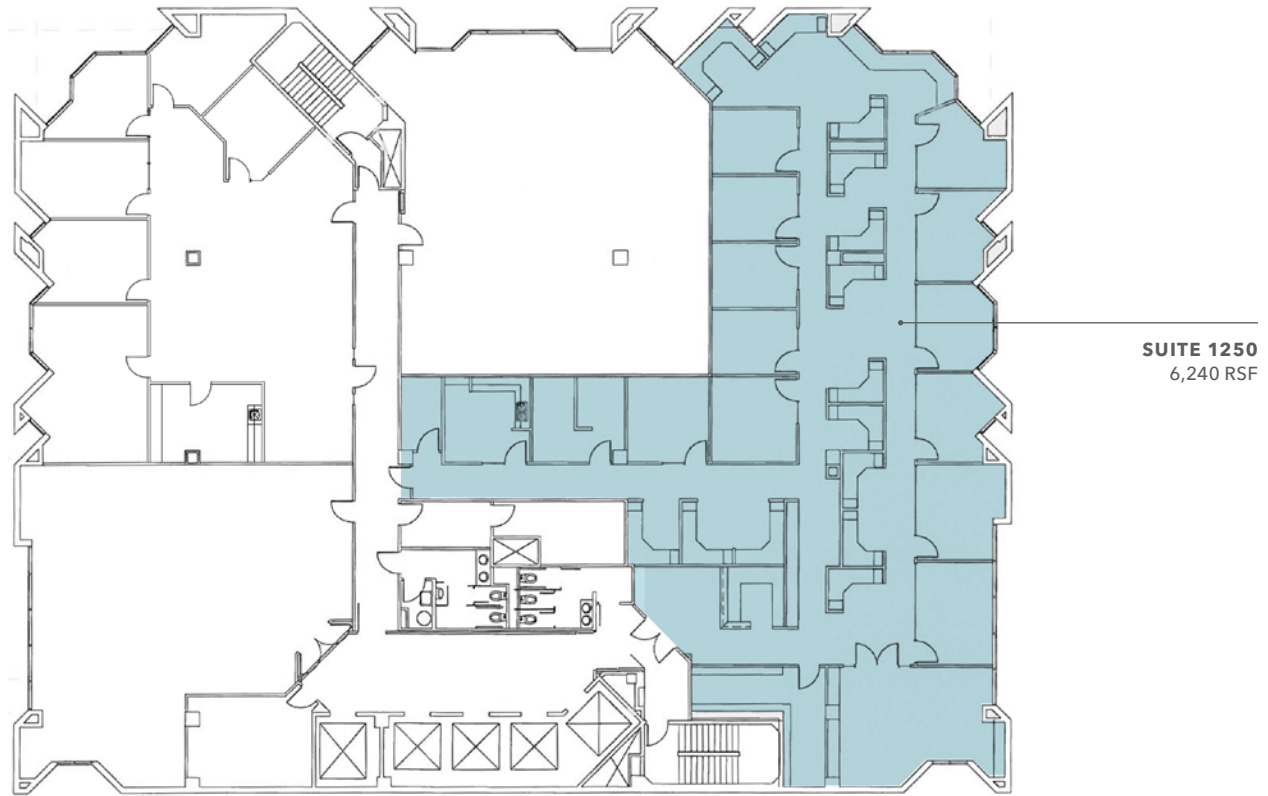
	Rentable SF	Description
SUTE 1010	1,739 SF	Reception, conference room, open plan with kitchen
SUITE 1020	1,160 SF	Reception, 2 offices, storage/file room and open area

## KIDDER.COM

This information supplied herein is from sources we deem reliable. It is provided without any representation, warranty, or guarantee, expressed or implied as to its accuracy. Prospective Buyer or Tenant should conduct an independent investigation and verification of all matters deemed to be material, including, but not limited to, statements of income and expenses. Consult your attorney, accountant, or other professional advisor.



# 12TH FLOOR



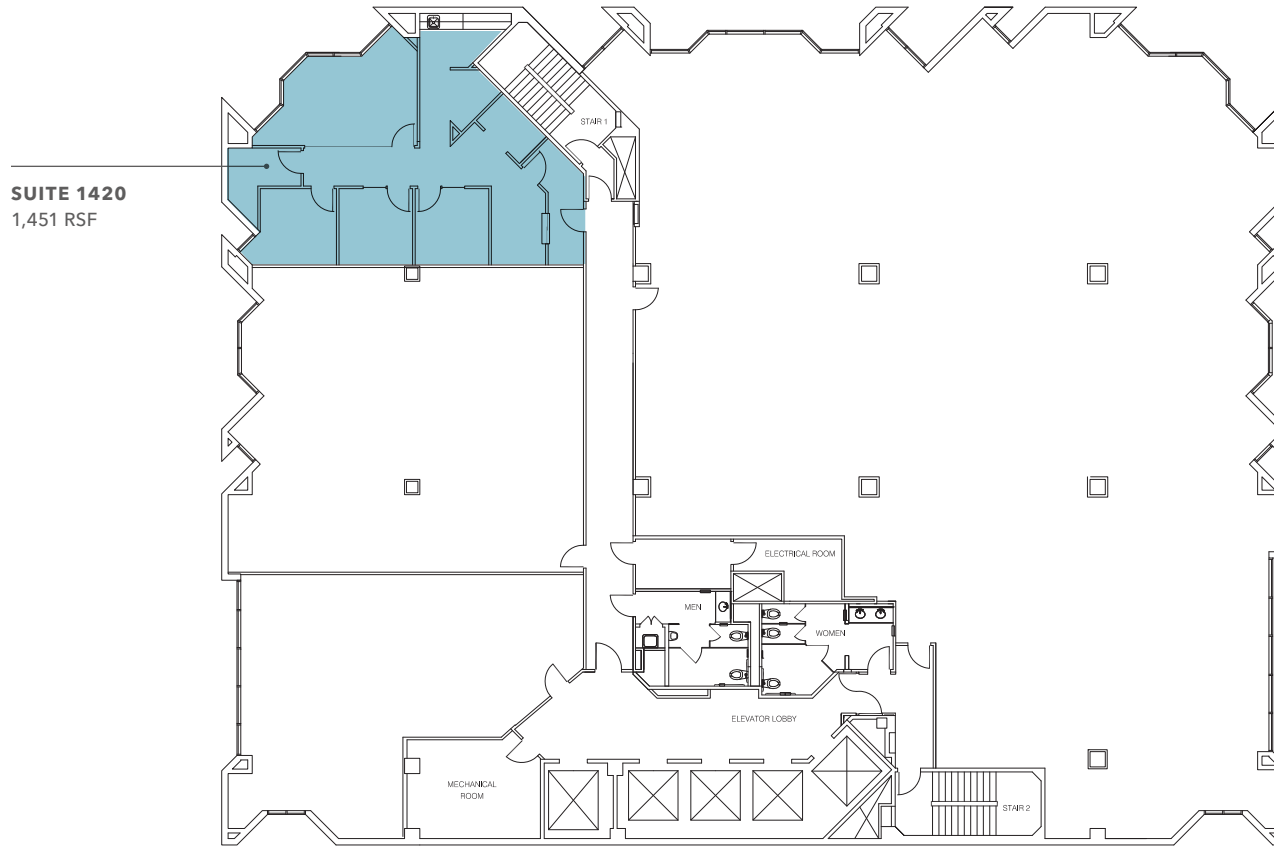
## SUITE AVAILABILITY

	Rentable SF	Description
SUITE 1250	6,240 SF	Double door elevator ID, reception, 12 offices, 18 work stations, work room, conference room, kitchen, server room, storage

## KIDDER.COM

This information supplied herein is from sources we deem reliable. It is provided without any representation, warranty, or guarantee, expressed or implied as to its accuracy. Prospective Buyer or Tenant should conduct an independent investigation and verification of all matters deemed to be material, including, but not limited to, statements of income and expenses. Consult your attorney, accountant, or other professional advisor.

# 14TH FLOOR



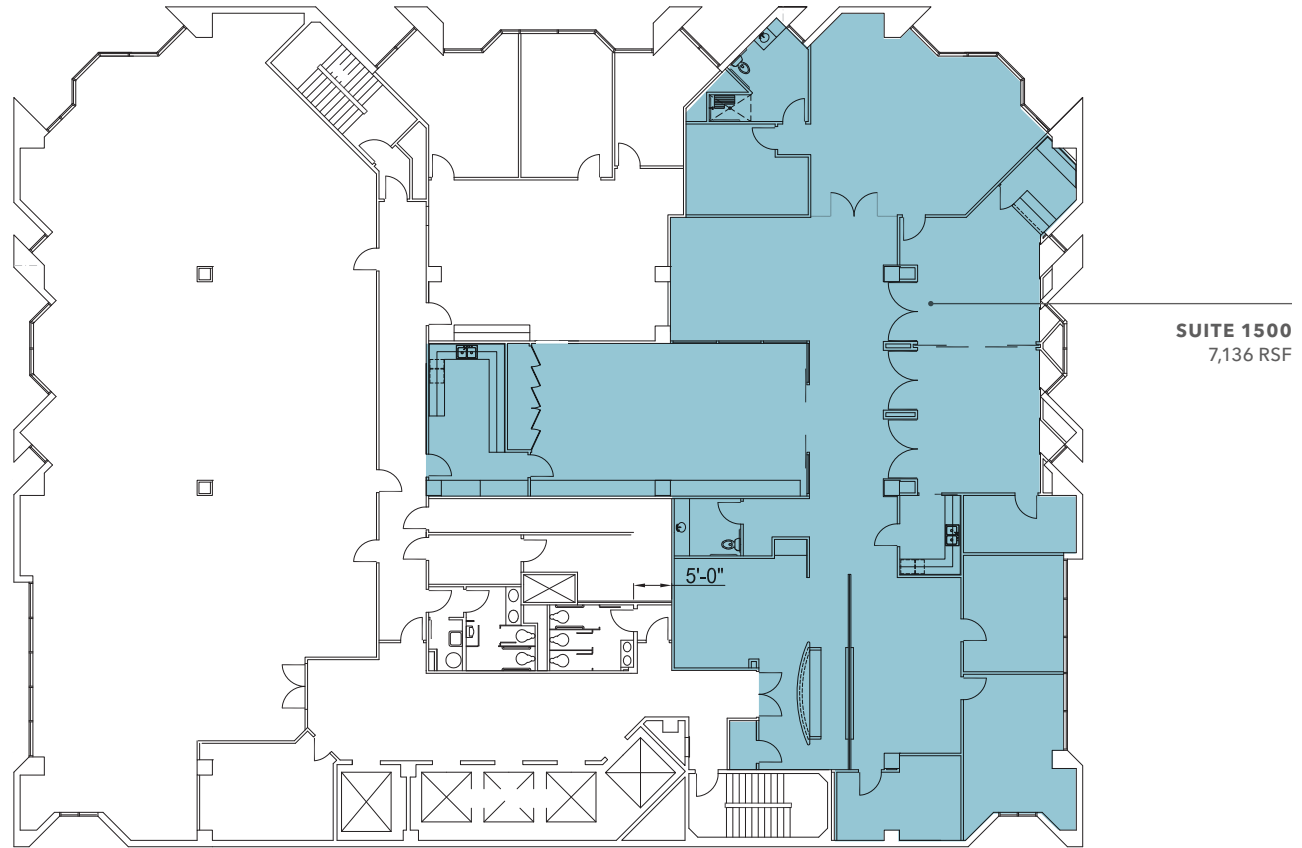
## SUITE AVAILABILITY

	Rentable SF	Description
SUITE 1420	1,451 SF	Reception, 3 offices, conference room, workstations and kitchen

## KIDDER.COM

This information supplied herein is from sources we deem reliable. It is provided without any representation, warranty, or guarantee, expressed or implied as to its accuracy. Prospective Buyer or Tenant should conduct an independent investigation and verification of all matters deemed to be material, including, but not limited to, statements of income and expenses. Consult your attorney, accountant, or other professional advisor.

# 15TH FLOOR



## SUITE AVAILABILITY

	Rentable SF	Description
SUITE 1500	7,136 SF	Double door reception, copy room, private restrooms, conference room, 11 offices, file room, IT room

## KIDDER.COM

This information supplied herein is from sources we deem reliable. It is provided without any representation, warranty, or guarantee, expressed or implied as to its accuracy. Prospective Buyer or Tenant should conduct an independent investigation and verification of all matters deemed to be material, including, but not limited to, statements of income and expenses. Consult your attorney, accountant, or other professional advisor.



### LOCATION HIGHLIGHTS

The property is centrally located on the southwest corner of W 6th St and Flower St

7th street Metro Center and The Delphi Hotel are adjacent

The financial district features some of the most diverse retail, restaurants, and entertainment options

800 W 6th St is a perfect destination for anyone that wants to live, work, and play downtown

### RESTAURANTS WITHIN A 6-MINUTE WALK



### KIDDER.COM

This information supplied herein is from sources we deem reliable. It is provided without any representation, warranty, or guarantee, expressed or implied as to its accuracy. Prospective Buyer or Tenant should conduct an independent investigation and verification of all matters deemed to be material, including, but not limited to, statements of income and expenses. Consult your attorney, accountant, or other professional advisor.