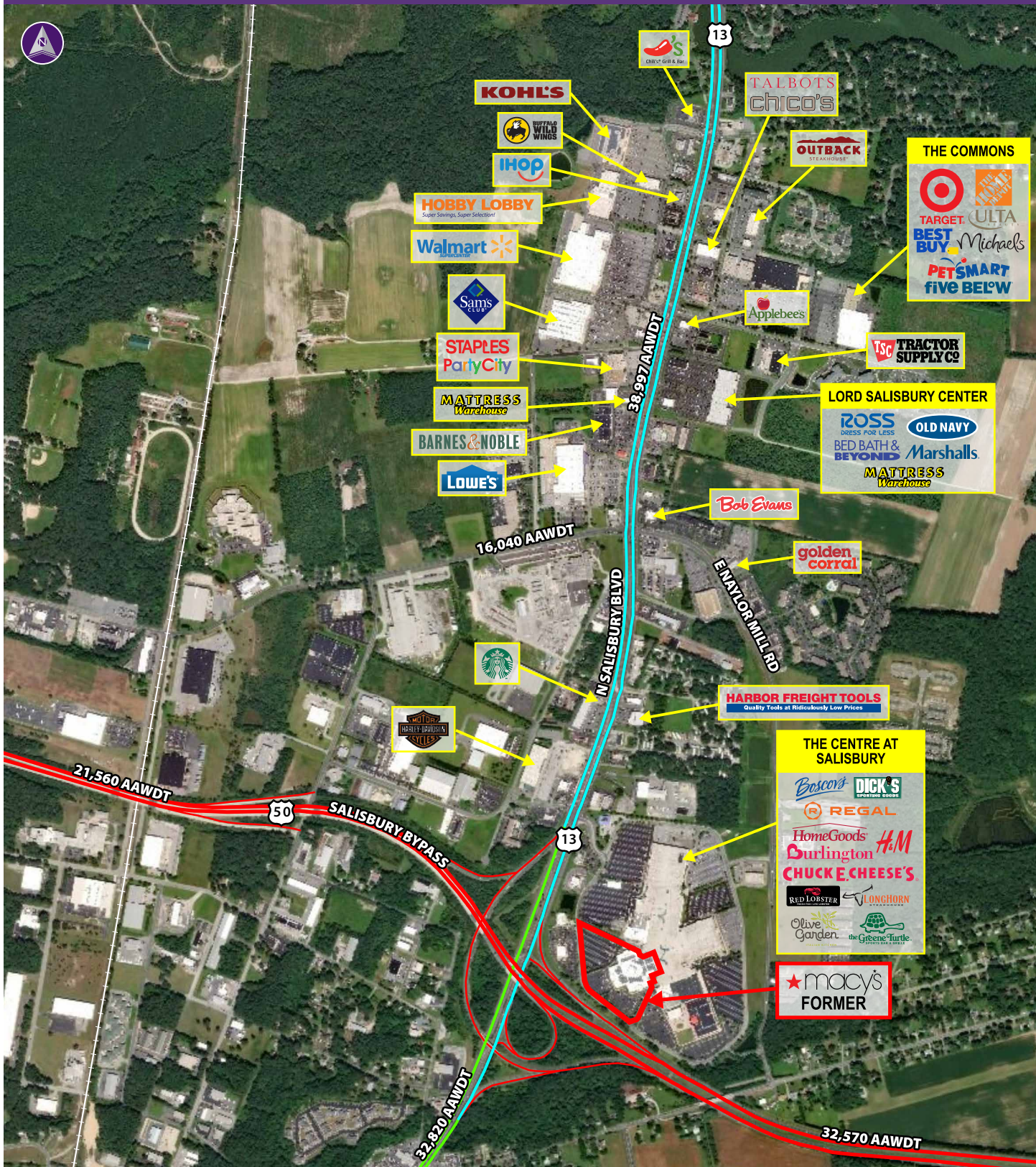


THE CENTRE AT SALISBURY ■ SALISBURY, MD



Information herein has been obtained from sources believed to be reliable. While we do not doubt its accuracy, we have not verified it and make no guarantee, warranty or representation about it. Independent confirmation of its accuracy and completeness is your responsibility. H&R Retail, Inc.

**Former Macy's For Sale**  
**AT THE CENTRE AT SALISBURY**  
2304 N SALISBURY BOULEVARD | SALISBURY, MD 21801  
**137,849 SF OR 10.27 ACRES FOR SALE**



Property Highlights

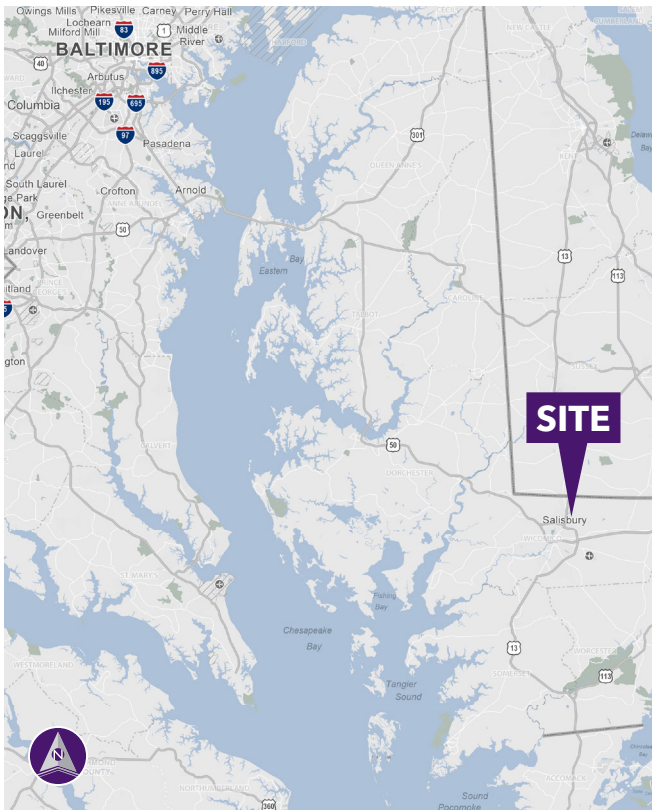
- 137,849 sf or 10.27 acres available for sale
- 862,000-sf super regional mall with anchors including Boscov's, Dick's Sporting Goods, 16-screen Regal Cinemas theater, Homegoods and Burlington
- Outstanding signage to Route 50 and Route 15
- Located in an opportunity zone.
- Zoning: Commercial

Demographics (2020 Estimated)

	1 Mile	3 Mile	5 Mile
Population	3,869	30,961	69,118
Average HH Income	\$76,992	\$61,697	\$63,715
Daytime Population	6,996	38,071	77,601
Households	1,555	11,689	25,632

Please Contact

<b>Bryan C. Davis</b> 202.438.7951 (cell) 240.482.3612 (direct) bdavis@hrretail.com	<b>Ray R. Schupp</b> 240.482.3611 (direct) 301.656.3030 (office) rschupp@hrretail.com
--	--







This is a detailed architectural floor plan of the 1st floor of a building, likely a university campus. The plan is oriented with North at the top. It features a complex network of corridors and numerous rooms, each labeled with a number and a description. Key areas include:

- Entrances:** Multiple entrances are marked, including "ENTRANCE 1" at the top center, "ENTRANCE 2" at the bottom center, and "ENTRANCE 3" on the right side.
- Classrooms and Lecture Halls:** Numerous rooms are labeled as "CLASSROOM", "LECTURE HALL", or "LECTURE ROOM".
- Offices and Administrative Spaces:** Rooms are labeled as "OFFICE", "ADMINISTRATIVE", "RECEPTION", and "CONFERENCE".
- Support Spaces:** These include "LABORATORY", "WORKSHOP", "STORAGE", "RESTROOM", "CLOSET", and "ELECTRONIC EQUIPMENT".
- Common Areas:** "COMMON AREA" and "LOBBY" are indicated in several locations.
- Room Numbers:** Rooms are numbered in the 100s, 200s, 300s, and 400s, often with a letter suffix (e.g., 100A, 200B).
- Corridors and Stairwells:** The plan shows a dense network of corridors and stairwells connecting the various rooms.
- Orientation:** A north arrow is located in the upper right quadrant of the plan.

The plan is a technical drawing with precise lines and labels, providing a comprehensive overview of the building's layout and room distribution.